



KNITTING PATTERN

# Isley

## Openwork Cable Scarf

**Design: Eliza Hinkes** | Winter 2025

# pompom x hobbii

## MATERIALS

**Pom Pom x Hobbii** Garland

**Shade:** Foal (21); 6 balls

4.5mm / US 7 circular needle, 60cm / 24"  
length or longer

4mm / US 6 circular needle, 60cm / 24"  
length or longer

Always use a needle size that will result in  
the correct gauge after blocking.

Cable needle, tapestry needle, blocking  
pins or blocking needles (optional)

## YARN QUALITY

 **Garland**, Hobbii x Pom Pom

Worsted weight

70% Cotton, 30% Alpaca

105m / 114yd per 50 g

## GAUGE

21 sts & 30 rows = 10cm / 4" over reverse St st  
on 4.5mm needles after blocking.

25 sts & 34 rows = 10cm / 4" over 2x2 Rib  
pattern on 4mm needles after blocking.

Each hole measures 8.5cm / 3¼" diameter  
after blocking.

## SIZE

190.5cm / 75" long x 23cm / 9" wide

## PATTERN INFORMATION

The scarf is cast on at the bottom edge,  
starting with 2x2 rib. After the ribbing is  
worked, the two middle ribs connect into a  
3/3 cable while the rest of the scarf is  
worked in reverse Stocking stitch. A slip  
stitch edging at the sides of the scarf keep  
the edges neat. The cable splits the scarf  
into two parts, and a separate ball of yarn  
is attached to work both parts using  
intarsia. The hole is formed using mirrored  
decreases and increases on both sides.  
Once the shaping is complete, the two  
sides are joined again using another 3/3  
cable. Intarsia is continued when knitting  
the cables to avoid cutting and  
reattaching the yarn. Once the scarf is long  
enough, it is ended with another section of  
2x2 rib. Slipped stitches are slipped purlwise  
throughout with yarn in back or in front as  
indicated.

## HASHTAGS FOR SOCIAL MEDIA

#IsleyScarf #PomPomXHobbii

## BUY THE YARN HERE

<https://shop.hobbii.com/isley-openwork-cable-scarf>

## QUESTIONS

If you have any questions regarding this pattern, please feel free to email us at [support@hobbii.com](mailto:support@hobbii.com). Please make sure to include the pattern's name and number.

Happy Crafting!

## Pattern



### ABBREVIATIONS

Beg: beginning

Dec: decrease

Est: established

Foll: follow(s)/following

Inc: increase

K: knit

k2tog: knit 2 stitches together

LH: left hand

M1L(P): Make 1 Left; pick up strand between the two needles from the front to back with the tip of left needle, knit (purl) into the back of this stitch

M1R(P): Make 1 Right; pick up strand between the two needles from back to front with the tip of left needle, knit (purl) into the front of this stitch

Patt: pattern (i.e. work in pattern)

PM: place marker

P: purl

P2tog: purl 2 stitches together

Rem: remain(s)/remaining

Rep: repeat

rev St st: reverse Stocking stitch (stockinette): purl on RS rows, knit on WS rows

RH: right hand

RS: right side

Sl: slip

Ssk: slip 2 stitches knitwise one at a time, knit together through the back loops

Ssp: slip 2 stitches knitwise one at a time, purl together through the back loops

SM: slip marker

st(s): stitch(es)

St st: stocking stitch (stockinette): knit on RS rows, purl on WS rows

Tbl: through the back loop

Tog: together

Wyib: with yarn held in back of work

Wyif: with yarn held in front of work

WS: wrong side

## STITCH GLOSSARY

**3/3 RC:** Sl 3 sts to cable needle, hold at back, k3, k3 from cable needle.

### WRITTEN INSTRUCTIONS FOR CHART

**Row 1 (RS):** K1, sl1 wyif, k1, p22, 3/3 RC, p22, k1, sl1 wyif, k1.

**Row 2 (WS):** Sl1 wyif, k1, sl1 wyif, k22, p2, sl1 wyif, with other ball of yarn sl1 wyif, p2, k22, sl1 wyif, k1, sl1 wyif. You have now created a gap in the middle of your work.

**Row 3:** K1, sl1 wyif, k1, p21, k2tog, k2, with other ball of yarn k2, ssk, p21, k1, sl1 wyif, k1. *2 sts dec*

**Row 4:** Sl1 wyif, k1, sl1 wyif, k to 1 st before last decrease, ssp, p1, sl1 wyif, with other ball of yarn sl1 wyif, p1, p2tog, k to last 3 sts, sl1 wyif, k1, sl1 wyif. *2 sts dec*

**Row 5:** K1, sl1 wyif, k1, p to 1 st before last decrease, k2tog, k2, with other ball of yarn k2, ssk, p to last 3 sts, k1, sl1 wyif, k1. *2 sts dec*

**Rows 6-13:** Rep rows 4-5 a further 4 times. *34 sts, 17 sts on each side of hole*

**Row 14:** Sl1 wyif, k1, sl1 wyif, k to last 3 sts before gap, p2, sl1 wyif, with other ball of yarn sl1 wyif, p2, k to last 3 sts, sl1 wyif, k1, sl1 wyif.

**Row 15:** K1, sl1 wyif, k1, p to last 4 sts before gap, k2tog, k2, with other ball of yarn k2, ssk, p to last 3 sts, k1, sl1 wyif, k1. *2 sts dec*

**Row 16:** Rep row 14.

**Row 17:** K1, sl1 wyif, k1, p to last 3 sts before gap, k3, with other ball of yarn k3, p to last 3 sts, k1, sl1 wyif, k1.

**Rows 18-20:** Rep rows 16-17 once more, then rep row 16 only once.

**Row 21:** K1, sl1 wyif, k1, p to last 3 sts before gap, M1RP, k3, with other ball of yarn k3, M1LP, p to last 3 sts, k1, sl1 wyif, k1. *2 sts inc*

**Row 22:** Rep row 14.

**Row 23:** Rep row 21. *2 sts inc*

**Row 24:** Sl1 wyif, k1, sl1 wyif, k to last 3 sts before gap, M1L, p2, sl1 wyif, with other ball of yarn sl1 wyif, p2, M1R, k to last 3 sts, sl1 wyif, k1, sl1 wyif. *2 sts inc*

**Rows 25-32:** Rep rows 23-24 a further 4 times. *54 sts, 27 sts on each side of hole*

**Row 33:** K1, sl1 wyif, k1, p to last 3 sts before gap, M1RP, k3, attach other ball of yarn using Intarsia method, k3, M1LP, p to last 3 sts, k1, sl1 wyif, k1. *2 sts inc*

**Row 34:** Sl1 wyif, k1, sl1 wyif, k22, p6, k22, sl1 wyif, k1, sl1 wyif.

**Row 35:** K1, sl1 wyif, k1, p22, 3/3 RC, p22, k1, sl1 wyif, k1.

**Row 36:** Rep row 34.

**Row 37:** K1, sl1 wyif, k1, p22, k6, p22, k1, sl1 wyif, k1.

**Row 38:** Rep row 34.

**Row 39:** Rep row 37.

**Row 40:** Rep row 34.

**Rows 41-52:** Rep rows 35-40 a further 2 times.

## PATTERN BEGINS

Using smaller needles and the Italian tubular cast-on method, cast on 56 sts.

**Set-up row 1 (RS):** [K1 tbl, sl1 wyif] to end.

**Set-up row 2 (WS):** [K1, sl1 wyif] to end.

With RS facing, without knitting and slipping sts wyib, rearrange sts for 2x2 rib as folls: sl first 4 sts to RH needle, \*sl next k st off LH needle, then sl next p st onto RH needle, then place slipped-off k st onto RH needle, sl next 2 sts onto RH needle; rep from \* to last 4 sts, [sl next k st off LH needle, then sl next p st onto RH needle, then place slipped-off k st onto RH needle] twice.

Slide sts to other end of needle to start a RS row.

**Row 1 (RS):** K1, sl1 wyif, k1, [p2, k2] to last 5 sts, p2, k1, sl1 wyif, k1.

**Row 2 (WS):** Sl1 wyif, k1, sl1 wyif, [k2, p2] to last 5 sts, k2, sl1 wyif, k1, sl1 wyif.

Rep rows 1-2 until ribbing measures 6.5cm / 2½", ending with a WS row.

Change to larger needles and work first cables as foll:

**Row 1 (RS):** K1, sl1 wyif, k1, p22, 3/3 RC, p22, k1, sl1 wyif, k1.

**Row 2 (WS):** Sl1 wyif, k1, sl1 wyif, k22, p6, k22, sl1 wyif, k1, sl1 wyif.

**Row 3:** K1, sl1 wyif, k1, p22, k6, p22, k1, sl1 wyif, k1.

**Rows 4-6:** Rep rows 2-3 once, then rep row 2 only once.

Rep rows 1-6 once more.

## **Chart**

Working from the Chart or Written Instructions, work row 1 of Chart, then read through the following notes and continue working through the chart as indicated:

On row 2, you will add in a second ball of yarn: work 28 sts, drop the yarn, and begin working the remainder of the row with a second ball of yarn, leaving a tail approx. 20.5cm / 8" long to weave in. You will now be knitting with two balls of yarn, one for each side of the scarf.

Work rows 3-32 of the chart, using the newly attached yarn for the right half of the scarf and the original yarn for the left half. Do not cross the yarn in the back of the work, but drop the yarn when you reach the hole forming in the middle of the scarf and pick up the other ball of yarn to work the other side.

On row 33 of the chart, join together the two halves of the scarf using the Intarsia method as folls: work 28 sts, drop the yarn from the first ball. Bring up the yarn from the second ball of yarn from below the first strand so that it now traps the first strand of yarn beneath it. Give the second strand of yarn a gentle tug to tension it, and then work the next st. The first strand of yarn will now be trapped beneath the second strand, and the fabric will not form a gap. Use this method to work the scarf with two balls of yarn when you are not forming the holes.

Row 35 works a cable while switching balls of yarn. Work 25 sts as est, then work the 3/3 RC as folls: sl 3 sts to cable needle and hold at back, k3 using the first ball of yarn. Drop the yarn

from the first ball, and then wrap the yarn from the second ball under and around the first strand, trapping it and creating a small float. With the second ball of yarn, k3 from cable needle, then work as est to end of row.

Continue to work in this manner, swapping balls of yarn every 28 sts for each row, until row 52 of the chart is complete.

Rep rows 1-52 a further 9 times, forming 10 holes. On the final rep of the chart, you may cut the second ball of yarn after row 33 and work solely with one ball. Leave a tail approx. 20.5cm / 8" long to weave in. On the final rep of the chart, end with row 48.

Change to smaller needles.

**Row 1 (RS):** K1, sl1 wyif, k1, [p2, k2] to last 5 sts, p2, k1, sl1 wyif, k1.

**Row 2 (WS):** Sl1 wyif, k1, sl1 wyif, [k2, p2] to last 5 sts, k2, sl1 wyif, k1, sl1 wyif.

Rep rows 1-2 until ribbing measures 6.5cm / 2½", ending with a WS row.

To work the Italian tubular cast-off, with RS facing and slipping sts wyib rearrange sts to 2x2 rib as folls: sl first 4 sts to RH needle, \*sl next p st off LH needle, then sl next k st onto RH needle, then place slipped-off p st onto RH needle, sl next 2 sts onto RH needle; rep from \* until 4 sts rem, [sl next p st off LH needle, then sl next k st onto RH needle, then place slipped-off p st onto RH needle] twice. Slide sts to other end of needle, ready to cast off with RS facing.

Break yarn, leaving a tail approx. 68.5cm / 27" long.

Cast off using the Italian tubular cast-off.

## FINISHING

Weave in ends and block to measurements.

**Enjoy!**

## SCHEMATIC

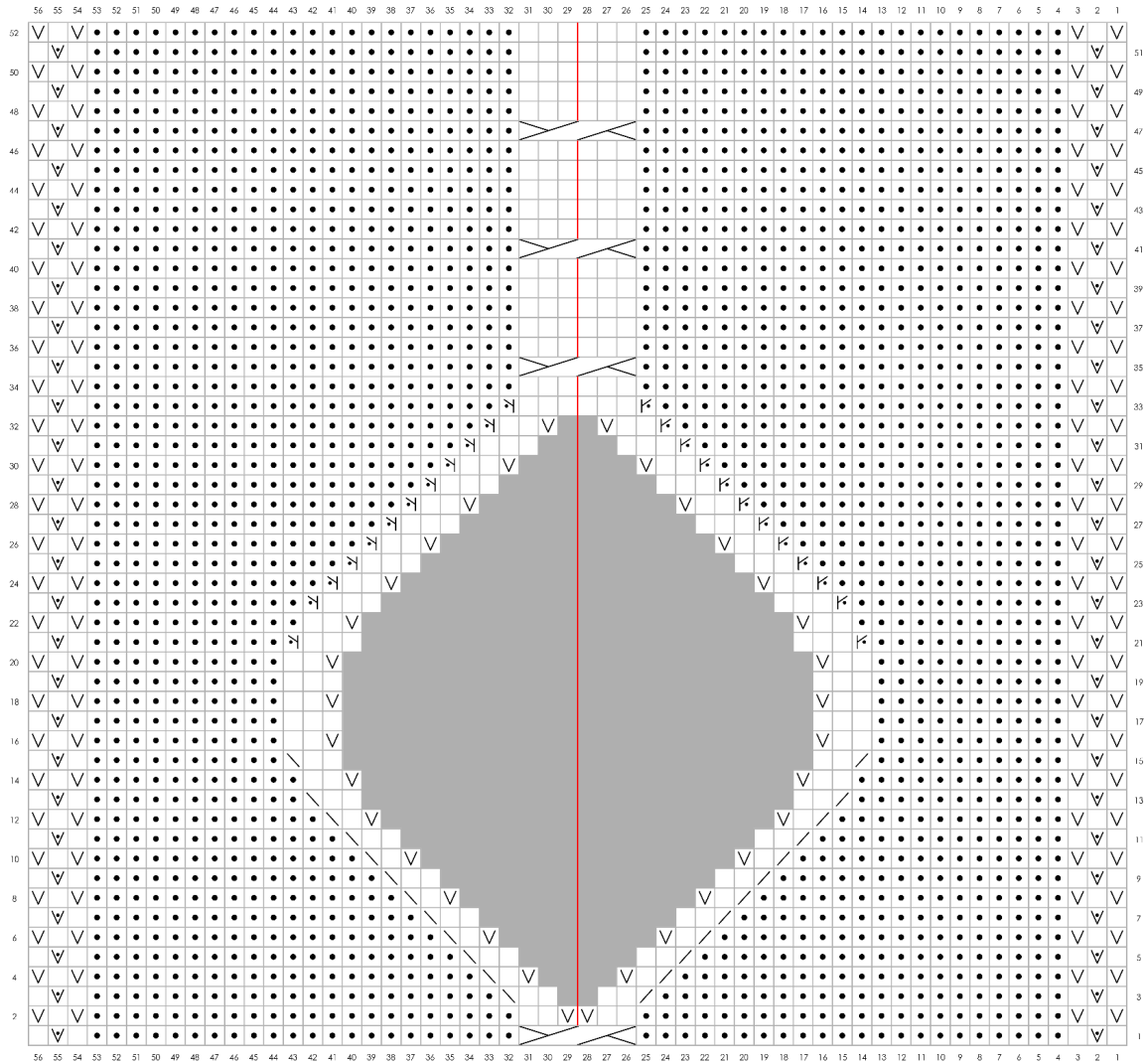


**a. Length:** 190.5cm / 75"

**b. Width:** 23cm / 9"

**Eliza Hinkes** (she/her) is a knitwear designer based in Seattle, Washington. She is inspired by vintage sweaters, apres-ski wear, and anything from the 70s. She aims to design patterns that are both challenging to knit and exciting to wear. *Instagram:* @ezhink / *Ravelry:* @ezhinkknits

## Chart





## Key



RS: knit  
WS: purl



RS: purl  
WS: knit



RS: S11 pwise wyib  
WS: S11 pwise wyif



RS: S11 pwise wyif  
WS: S11 pwise wyib



RS: M1LP  
WS: M1L



RS: M1RP  
WS: M1R



RS: SSK  
WS: SSP



RS: k2tog  
WS: p2tog



3/3 RC



No stitch



Yarn ball change