



KNITTING PATTERN

Biophilia

Colourwork Cowl

Design: Neisha Abdulla | Winter 2025

MATERIALS

Pom Pom x Hobbii Garland

Shades:

Yarn A: Tadpole (12); 6 balls

Yarn B: Oat Milk (29); 4 balls

4mm / US 6 circular needle, 40cm / 16"
length

Always use a needle size that will result in the correct gauge after blocking.

Stitch marker, scrap yarn, tapestry needle, spare circular needle (for working Kitchener stitch)

YARN QUALITY

 **Garland**, Hobbii x Pom Pom

Worsted weight

70% Cotton, 30% Alpaca

105m / 114yd per 50 g

GAUGE

26.5 sts & 27 rounds = 10cm / 4" over colourwork pattern on 4mm needles after blocking.

SIZE

17cm / 6¾" wide x 145.5cm / 57¼" circumference

PATTERN INFORMATION

Biophilia is constructed in the round and uses stranded colourwork. It is a tubular infinity scarf that begins with a provisional cast on. The ends are then grafted together using Kitchener stitch.

HASHTAGS FOR SOCIAL MEDIA

#BiophiliaCowl #PomPomXHobbii

BUY THE YARN HERE

<https://shop.hobbii.com/biophilia-colourwork-cowl>

QUESTIONS

If you have any questions regarding this pattern, please feel free to email us at support@hobbii.com. Please make sure to include the pattern's name and number.

Happy Crafting!

Pattern



ABBREVIATIONS

PM: place marker

RS: right side

st(s): stitch(es)

WS: wrong side

PATTERN BEGINS

Using yarn A and a provisional method, cast on 90 sts. PM and join for working in the round, being careful not to twist stitches.

Knit 1 round.

Next round: Join yarn B and work row 1 of chart to end.

Working next row of chart each time, continue until chart has been completed a total of 12 times.

Break yarn B, but leave yarn A attached, ready to work Kitchener stitch.

Turn work inside out and weave in ends on WS.

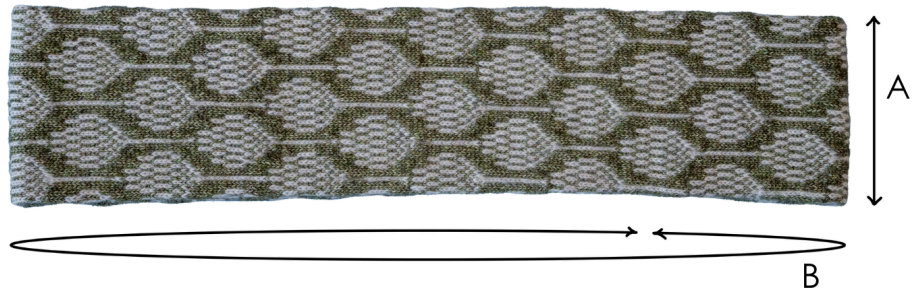
Turn work RS out again and graft the two ends together using Kitchener stitch.

FINISHING

Block to measurements.

Enjoy!

SCHEMATIC

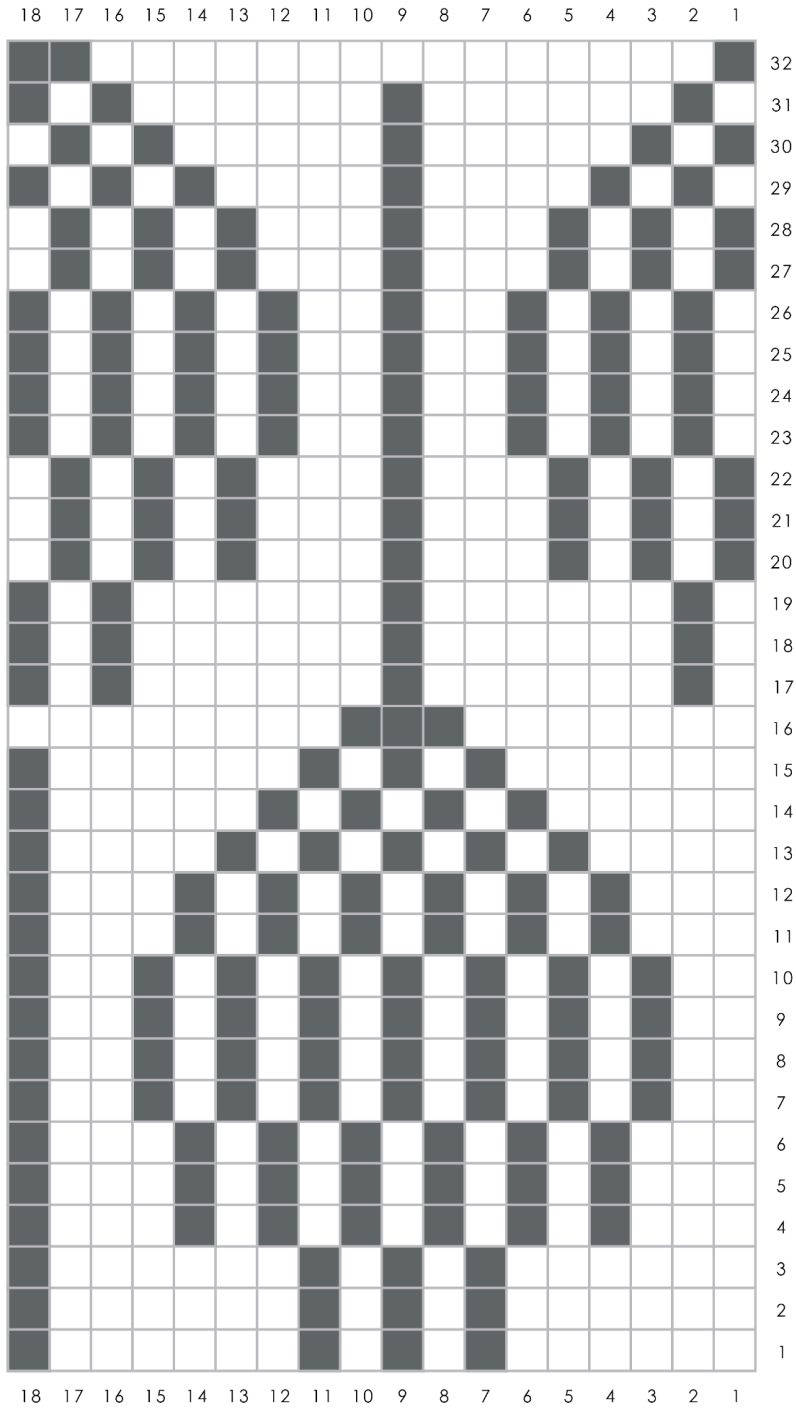


a. Width: 17cm / 6³/₄"

b. Circumference: 145.5cm / 57¹/₄"

Neisha Abdulla (she/her) is a knitwear designer based in Ireland. She has a background in Art & Design with a focus on sculpting and uses knitting as another way to make art. It gives her the opportunity to construct with colour. *Ravelry:* neish / *Instagram:* @neishdesign

Chart



Key

- Knit with yarn A
- Knit with yarn B