



CROCHET PATTERN

# Dahlia

## Cardigan

Design: Crafty Maz Designs | Hobbii Design

## MATERIALS

5(5, 6, 6, 7) skeins of **Metallico Fine**,  
col. 02

Crochet hook 4mm

Embroidery needle

Stitch markers

Scissors

Tape measure

## YARN QUALITY

 **Metallico Fine**, Hobbii

70% Polyamide, 20% Acrylic, 10% Wool

50 g / 1.75 oz. = 265 m / 289 yds.

## GAUGE

10 cm x 10 cm (4" x 4") = 21st x 11 rows in  
dc

## ABBREVIATIONS

ch = chain(s)

st(s) = stitch(es)

sk = skip

chsp('s) = chain space(s)

fsc = foundation single crochet

sc = single crochet

dc = double crochet

dec = decrease (crochet 2 stitches together)

\*...\* = repeat between \*\*

(...) = repeat between ( )

{...} = end stitch count

RS/WS = right/wrong side

## SIZES

S (M, L, XL, 2XL)

## MEASUREMENTS

Finished chest measurements are provided  
below. Choose size based on chest  
measurement and desired ease.

Chest: 86(96.5, 106.5, 117, 127) cm or  
34(37, 42, 46, 50) inches

Length: 57(58.5, 60, 61, 62.5) cm or  
22.25(23, 23.5, 23.75, 24.25) inches

## PATTERN INFORMATION

Here is a beautiful, light and airy spring  
cardigan made in one piece with seaming  
only at the shoulders.

## HASHTAGS FOR SOCIAL MEDIA

#hobbiidesign #hobbiidahlia

## BUY THE YARN HERE

<https://shop.hobbii.com/dahlia-cardigan>

## QUESTIONS

If you have any questions regarding this pattern, please feel free to email us at  
[support@hobbii.com](mailto:support@hobbii.com)

Please make sure to include the pattern's name and number.

Happy Crafting!



# Pattern



## INFO AND TIPS

- Chainless standing double crochet (csdc) can be replaced with ch 2 which counts as a dc
- A single chain space counts as a st. For example, 'dc 5' means working into sts and chsp's

## Special stitches

### Crab Stitch

Insert the hook into the first available st to the right, yarn over and pull through the st, yarn over and pull through both loops on the hook.

## LOWER FRONT AND BACK

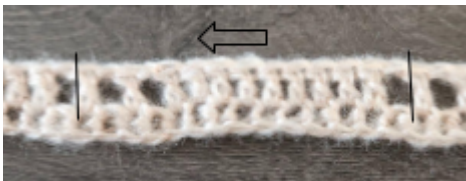
### Set up row:

Option 1: Work 167 (195, 209, 223, 251) fsc, turn

OR

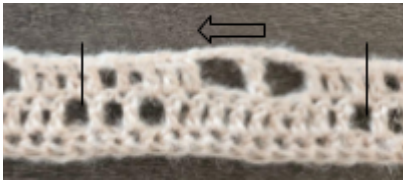
Option 2: Ch 168 (196, 210, 224, 252), sc in 2nd ch from the hook and in each ch across, turn

**Row 1 [WS]:** csdc in same st, \*ch 1, sk st, dc 9, (ch 1, sk st, dc 1) 2 times\* repeat 11 (13,14,15,17) times, ch 1, sk st, dc 9, ch 1, sk st, dc 1, turn

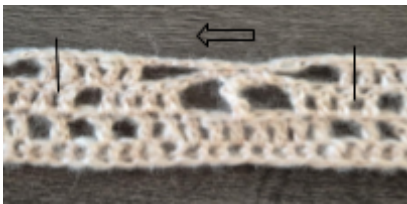


**Row 2 [RS]:** csdc in same st, \*dc 3, ch 3, sk 2 sts, tr 1, ch 3, sk 2 sts, dc 4, ch 1, sk st, dc 1\* repeat 11(13,14,15,17) times, dc 3, ch 3, sk 2 sts, tr 1, ch 3, sk 2 sts, dc 4, turn

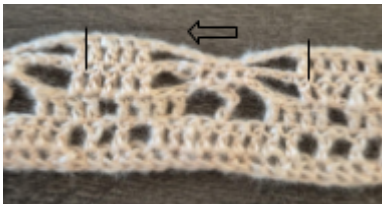




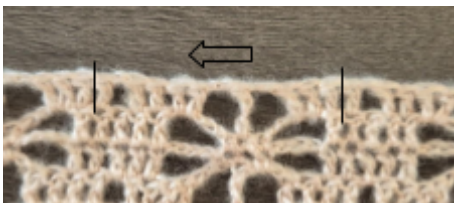
**Row 3 [WS]:** csdc in same st, \*dc 1, ch 4, sk 2 sts, sc 1 in ch 3 sp, sc in top of tr, sc 1 in ch 3 sp, ch 4, sk 2 sts, dc 4\* repeat 11(13,14,15,17) times, dc 1, sk 2, ch 4, sc 1 in ch 3 sp, sc in top of tr, sc 1 in ch 3 sp, ch 4, sk 2, dc 2, turn



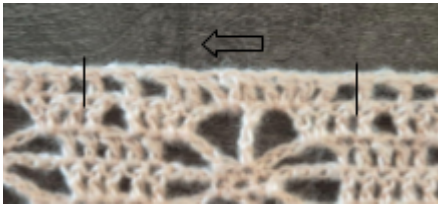
**Row 4 [RS]:** csdc in same st, \*dc 1, ch 4, sk ch 4 sp, sc 3, ch 4, sk ch 4 sp, dc 4\* repeat 11(13,14,15,17) times, dc 1, ch 4, sk ch 4 sp, sc 3, ch 4, sk ch 4 sp, dc 2, turn



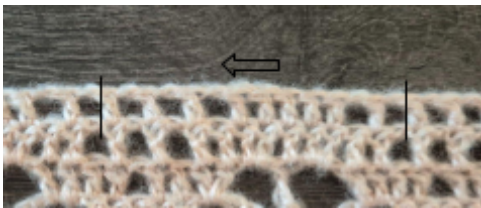
**Row 5 [WS]:** csdc in same st, \*dc 1, dc 2 in ch 4 sp, ch 2, sk 1<sup>st</sup> sc, tr 1 in next, sk last sc, ch 2, dc 2 in ch 4 sp, dc 2, ch 1, sk 1, dc 1\* repeat 11(13,14,15,17) times, dc 1, dc 2 in ch sp, ch 2, sk 1<sup>st</sup> sc, tr 1 in next, sk last sc, ch 2, dc 2 in ch 4 sp, dc 2, turn



**Row 6 [RS]:** csdc in same st, \*ch 1, sk 1, dc 2, dc 2 in ch 2 sp, dc 1 in tr, dc 2 in ch 2 sp, dc 2, (ch 1, sk 1, dc 1) 2 times\* repeat 11(13,14,15,17) times, ch 1, sk 1, dc 2, dc 2 in ch 2 sp, dc 1 in tr, dc 2 in ch 2 sp, dc 2, ch 1, sk 1, dc 1, turn



**Row 7 [WS]:** csdc in same st, \*(ch 1, sk 1, dc 1) 2 times, dc 4, (ch 1, sk 1, dc 1) 3 times\* repeat 11(13, 14, 15, 17) times, \*ch 1, sk 1, dc 1\* 2 times, dc 4, \*ch 1, sk 1, dc 1\* 2 times, turn



Repeat rows 1-7 seven times finishing on row 6.

### UPPER FRONT FIRST SIDE

**Note:** All odd numbered rows are RS facing. All even numbered rows are WS facing.

**Row 1 [RS]:** csdc in same st, dc 40(48, 53, 58, 63), turn, {41(49, 54, 59, 64) dc}

**(58, 63) Only** - Repeat row 1 twice more

**Row 2(2, 2, 4, 4):** csdc in same st, dc 1 in each st until 2 sts remain, dc dec, turn

**Row 3(3, 3, 5, 5):** csdc dec across first 2 sts, dc 1 in each st until the end, turn

Repeat previous two rows until row 8(10, 10, 12, 12), {34(40, 45, 50, 55) dc}

**Row 9(11, 11, 13, 13):** csdc in same st, dc 1 in each st until the end, turn

**Row 10(12, 12, 14, 14):** csdc in same st, dc 1 in each st until 2 sts remain, dc dec, turn

Repeat previous two rows until row 19(21, 23, 25, 25), {29(35, 39, 44, 49) dc}

Fasten off.

### UPPER FRONT SECOND SIDE

**Note:** All odd numbered rows are RS facing. All even numbered rows are WS facing.

**Row 1:** Start with a standing dc in the 41st(49th, 54th, 59th, 64th) st from the opposite side of starting the upper front first side, dc in each st to the end, turn, {41(49, 54, 59, 64) dc}

**(58, 63) Only** - Repeat row 1 twice more

**Row 2(2, 2, 4, 4):** csdc dec across first 2 sts, dc 1 in each st until the end, turn

**Row 3(3, 3, 5, 5):** csdc in same st, dc 1 in each st until 2 sts remain, dc dec, turn

Repeat previous two rows until row 8(10, 10, 12, 12), {34(40, 45, 50, 55) dc}

**Row 9(11, 11, 13, 13):** csdc in same st, dc 1 in each st until the end, turn

**Row 10(12, 12, 14, 14):** csdc dec across first 2 sts, dc 1 in each st until the end, turn

Repeat previous two rows until row 19(21, 23, 25, 25), {29(35, 39, 44, 49) dc}  
Fasten off.



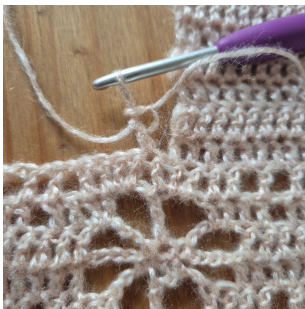
## UPPER BACK

**Note:** All odd numbered rows are RS facing. All even numbered rows are WS facing.

**Row 1:** Start with a standing dc in the next available st from the 'Upper front first side', dc 84(96, 104, 115, 125), turn, {85(97, 105, 116, 126)}

**Row 2:** csdc in same st, dc 1 in each st until the end, turn

Repeat row 2 until row 17(19, 21, 23, 23), {85(97, 105, 116, 126)}



## CONNECTING UPPER BACK WITH FRONT SIDES

Start with a csdc on the back side, remove hook, insert hook into the first st on the front side, pull the loop through, \*dc in the next available st on the back side, remove hook, insert hook into the next st on the front side, pull the loop through\* repeat 28(34, 38, 43, 48) times, {29(35, 39, 44, 49) total dc so far}

dc 28(28, 28, 29, 29) on the back side, {57(63, 67, 73, 78) total dc so far}

\*dc in the next available st on the back side, remove hook, insert hook into the next st on the front side, pull the loop through\* repeat for a total of 29(35, 39, 44, 49) times so all sts on the front side are connected, fasten off. {85(97, 105, 116, 126) dc}



## SLEEVES

**Note:** All odd numbered rounds are RS facing. All even numbered rounds are WS facing.

**Round 1:** Attach yarn with a standing dc dec across the two central sts in the armpit, making your way around the arm opening, place 2 dc for every row of the front and back panel, slst to first dc to join, turn, {75(83, 91, 99, 99)} stitch count remains the same from here on.



**Round 2 - 31(31, 32, 32, 33):** csdc in the first st, dc 74(82, 90, 98, 98), slst to join, turn, **With the right side facing from now on**

**Round 32(32, 33, 33, 34) - 33(33, 34, 34, 35):** ch 1, sc in each st around, slst to join,

**Round 34(34, 35, 35, 36):** ch 1, crab st in each st around, slst to join and fasten off and weave in ends.





## EDGING

With the right side facing from here on

**Round 1:** Attach yarn with a standing sc in any st along the bottom edge of the back side, sc in each st until the last st on the bottom edge, 3 sc in the last st,



place 2 sc per row of dc up to where you meet the back side leaving space for one last sc on the front side, sc dec over the last st and the first st of the back side closing the gap,



sc in each st along the back side leaving the last st, sc dec over the last st and first st of the front side closing the gap,



place 2 sc per row of dc down to the bottom corner of the cardigan, 3 sc in the first st of the bottom edge, sc in each st until the end, slst to join,





**Round 2:** ch 1, sc in each st around, slst to join,

**Round 3:** ch 1, crab st in each st around, slst to join and fasten off and weave in ends.

### Bow ties

**Row 1:** With the RS facing, start with a standing back post sc around any crab st where the decreases started for the front sides, back post sc in the next 2 sts, ch 1, turn

**Row 2 - 130:** sc in the next 3 sts, ch 1, turn

Fasten off and weave in ends.

Repeat for the second side, making sure you join in the same place to make it symmetrical.



Enjoy!



Mary Etheridge – Crafty Maz Designs