



CROCHET PATTERN

Holiday Glow

Sweater

Design: Jane Green - Beautiful Crochet Stuff | Hobbii Design


MATERIALS

Winter Glow Solid

1, 1, 1, 2 skein(s) of col. 24
1, 1, 1, 2 skein(s) of col. 07
1, 1, 1, 2 skein(s) of col. 16
1, 1, 1, 2 skein(s) of col. 02
1, 1, 1, 2 skein(s) of col. 03

Crochet hook 4 mm / US G/6
Other: needle and blue thread

YARN QUALITY

 **Winter Glow Solid**, Hobbii
51% Wool, 49% Acrylic
100 g / 3.5 oz = 350 m / 382 yds

GAUGE

16 dc sts x 11 rows (first 11 rows) = 10 cm x
10 cm / 4" x 4"

ABBREVIATIONS

ch = chain
sl st = slip stitch
sc = single crochet
dc = double crochet
fpdc = front post double crochet
bpdc = back post double crochet
V-st = 2 dc with ch-1 space between them
in the same stitch
shell st = 5 dc in the same stitch
dc2(3)tog = 2(3) dc crochet together in the
same stitch
Rep = repeat

SIZE

S/M, (L/XL), 2XL/3XL, 4XL/5XL

MEASUREMENTS

Width: 48, (61), 74, 87cm / 19", (24"), 29",
34.25"
Length: 48 cm / 19" (adjustable)
Sleeve Length: 39 cm / 15.5" (adjustable)

PATTERN INFORMATION

This sweater is a simple and fun project, great for beginners and experienced crocheters alike. It's made up of four basic pieces: two rectangles for the front and back, and two for the sleeves. Crocheted from the bottom up with a mix of stitches, it creates relaxed stripes that are easy to follow. Using a 4 mm hook, it works up quickly and keeps a nice, lightweight feel. The pattern comes with a helpful photo guide, so even if you're a newbie crocheter, you'll be able to follow along with ease. Whether you're after a cozy evening project or a comfy, handmade addition to your wardrobe, this sweater is a lovely, laid-back option.

HASHTAGS FOR SOCIAL MEDIA

#hobbiidesign #hobbiigreatbasics
#hobbiiholidayglow

BUY THE YARN HERE

<https://shop.hobbii.com/holiday-glow-sweater>

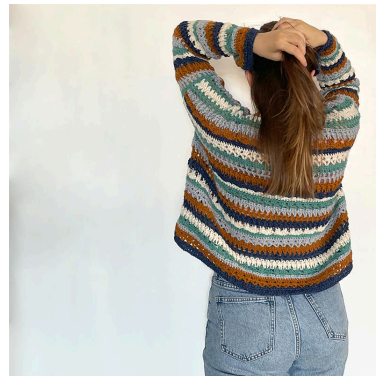


QUESTIONS

If you have any questions regarding this pattern, please feel free to email us at support@hobbii.com
Please make sure to include the pattern's name and number.

Happy Crafting!

Pattern



INFO AND TIPS

The number of stitches is multiple of 24+2. Change the yarn color at the end of every second row. Be sure to check the stitch count in the 9th and 13th rows.

Sizing: The model is wearing size L to achieve an oversized look. The sizing is true to size. For an oversized fit, size up.

MAIN PATTERN

Row 1 (col. 07): Right side, foundation dc row - 74 (98) 122 146 dc.

Row 2 (col. 07): Wrong side, ch 1 (turning chain, don't count as a stitch), turn, sc in each dc to the end of the row. Change color.



Row 3 (col. 24): Right side, ch 3 (count as the first dc), turn, skip next sc, V-st in next sc, * skip next 2 sc, V-st in next sc **, rep from * to ** to the end of the row, skip next sc, dc in the last sc.

Row 4 (col. 24): Wrong side, ch 3 (count as the first dc), turn, 3 dc in each ch-1 space to the end of the row, dc in the last dc. Change color.



Row 5 (col. 03): Right side, ch 1 (turning chain, don't count as a stitch), turn, sc in each dc to the end of the row.

Row 6 (col. 03): Wrong side, ch 1 (turning chain, don't count as a stitch), turn, sc in each sc to the end of the row. Change color.



Row 7 (col. 16): Right side, ch 1 (turning chain, don't count as a stitch), turn, sc in the first sc, skip next 2 sc, shell st in next sc, * skip next 2 sc, sc in next sc, skip next 2 sc, shell st in next sc **, rep from * to ** to the end of the row, skip next 2 sc, sc in the last 2 sc.

Row 8 (col. 16): Wrong side, ch 2 (count as the first stitch), turn, dc in the first sc, ch 3, sc in the top of the shell stitch (in the third dc), ch 2, * dc3tog in next sc, ch 2, sc in the top of the shell stitch, ch 2 **, rep from * to ** to the end of the row, dc2tog in the last sc. Change color.



Row 9 (col. 02): Right side, ch 3 (count as the first dc), turn, 2 dc in next ch-2 space, dc in next sc, * 2 dc in next ch-2 space, dc in the top of dc3tog, 2 dc in next ch-2 space, dc in next sc **, rep from * to ** to the last ch-3 space, 3 dc in the last ch-3 space, dc in the last st. Check the number of stitches in this row. 74 (98) 122 146 dc.

Row 10 (col. 02): Wrong side, ch 2 (count as the first st), turn, * fpdc in next dc, bpdc in next dc **, rep from * to ** to the end of the row, dc in the last dc. Change color.



Row 11 (col. 07): Right side, ch 4 (count as the first dc plus ch-1 space), turn, * skip next st, dc in next st, ch 1 **, rep from * to ** to the end of the row, dc in the last 2 sts.

Row 12 (col. 07): Wrong side, ch 4 (count as the first dc plus ch-1 space), turn, * dc in next ch-1 space, ch 1 **, rep from * to ** to the end of the row, dc in the last ch-1 space. Change color.



Row 13 (col. 24): Right side, ch 3 (count as the first dc), turn, 2 dc in each ch-1 space, dc in the last dc. Check the number of stitches in this row. 74 (98) 122 146 dc.

Row 14 (col. 24): Wrong side, ch 1 (turning chain, don't count as a stitch), turn, sc in each dc to the end of the row. Change color.



NOTE: Follow the color scheme: blue -> orange -> grey -> green -> white. This means the 15th row begins with grey.



Repeat Row 3-14 until you have 49 rows (or reach the desired length) Finish with the Row 13.

Now you have the first panel of your sweater. Crochet the second one in the same way.



SLEEVES

Row 1 (col. 07): Right side, foundation dc row - 50 (50) 50 74 dc.

Row 2 (col. 07): Wrong side, ch 1 (turning chain, don't count as a stitch), turn, sc in each dc to the end of the row. Change color.

Repeat Row 3-14 of the main pattern until you have 37 rows (or reach the desired length). Finish with Row 12. Crochet the second sleeve in the same way.



JOINING

Sew the side, sleeve, and shoulder seams, then attach the sleeves to the body. All seams should be sewn using a needle and thread in the corresponding color.



Enjoy!

Jane Green

Beautiful Crochet Stuff