



KNITTING PATTERN

Love Moon

Children's cardigan

Design: RWD STUDIO | Hobbii Design



MATERIALS

Main color

4 (4) 5 (6) 6 skeins of **Alpaca Silk**, color (28)

Details

Moon: 1 skein of **Soft Alpaca**, color (14)

Neckline ribbing: 1 skein of **Soft Alpaca**, color (35)

Pocket: 1 skein of **Soft Alpaca**, color (32)

Heart and sleeve ribbings: 1 skein of **Alpaca Silk**, color (26)

Circular needle 4 mm (US 6) – 60 cm (24")

Circular needle 5 mm (US 8) – 60 cm (24")

Crochet hook 4 mm (G/6)

Stitch markers

YARN QUALITY

 **Alpaca Silk**, Hobbii

70 % Alpaca, 30 % Mulberry Silk

50 g (1.75 oz) = 166 m (181 yds)

 **Soft Alpaca**, Hobbii

100 % Alpaca

50 g (1.75 oz) = 165 m (180 yds)

GAUGE

20 sts x 26 rows = 10 x 10 cm (4 x 4")

in stockinette stitch with 2 strands of Alpaca Silk

SIZE

6 months (1 year) 2-3 years (3-4 years) 5-6 years

MEASUREMENTS

Width: 26 (28) 30 (34) 38 cm / 10.2 (11.0) 11.8 (13.4) 15.0"

ABOUT THE PATTERN

The Love Moon Cardigan is a lovely, soft cardigan that keeps little hands busy. The cardigan features two small knitted elements that can be placed in the pockets or hang loose. You can easily give the cardigan your own touch by experimenting with the colors. The Love Moon Cardigan is worked bottom up with raglan decreases and with 2 strands of yarn held together.

HASHTAGS FOR SOCIAL MEDIA

#hobbiidesign #rwdstudio

#hobbiilovemoon

BUY THE YARN HERE

<https://shop.hobbii.com/love-moon-children-s-cardigan>

QUESTIONS

If you have any questions regarding this pattern, please feel free to email us at

support@hobbii.com

Please make sure to include the pattern's name and number.

Happy Crafting!

Pattern



ABBREVIATIONS

st(s) = stitch(es)

k = knit

p = purl

tbl = through the back loop

rnd(s) = round(s)

RS = right side

WS = wrong side

M1 = increase 1 stitch by picking up the bar between 2 stitches and knitting it through the back loop

yo(s) = yarnover(s)

sl1p = slip 1 stitch purlwise

k2tog = knit 2 stitches together

p2tog = purl 2 stitches together

co = cast on

bo = bind off

pssso = pass slipped stitch over

BOR = beginning of round

BODY

Ribbing

Using needle 4 mm (US 6), co 113 (119) 125 (139) 149 sts. Work 7 (7) 9 (9) 11 rows in rib stitch (k1, p1).

Change to needle 5 mm (US 8).

Work stockinette stitch until the work measures 18 (20) 24 (28) 32 cm / 7.1 (7.9) 9.4 (11.0) 12.6".

End with a WS row.

Proceed as follows: K24 (26) 27 (30) 32, bo 5 (5) 6 (7) 8 sts loosely, k55 (57) 59 (65) 69, bo 5 (5) 6 (7) 8 sts loosely, k24 (26) 27 (30) 32. Put the sts on hold.

Sleeves

Work in the round using the magic loop technique.

Ribbing

Using needle 4 mm (US 6), co 30 (32) 34 (36) 40 sts. Work 6 (8) 10 (12) 14 rnds in rib stitch (k1, p1).

Change to needle 5 mm (US 8) and place a marker at the BOR.

Work 2 rnds in stockinette stitch.

Then increase as follows:

K until the first st before the marker, M1L, k until 1 st after the marker, M1R.

Repeat this on every 6th row a total of 7 times = 44 (46) 48 (50) 54 sts on the needle.

Work stockinette stitch until the work measures 20 (22) 25 (29) 33 cm / 7.9 (8.7) 9.8 (11.4) 13.0".

Bo 5 (5) 6 (7) 8 sts below the sleeve.

Cut off the yarn and make another sleeve following the same procedure.

Yoke

All pieces are now joined on needle 5 mm (US 8) from the WS. P2tog at each "join". These 4 purled together sts now make up the raglan sts of the work. Place a marker on each side of these raglan sts (= 8 raglan markers).

Work as established while decreasing on the RS on each side of the 4 raglan sts as follows:

*Work until 2 sts before marker, sl1p, k1, pssso, slip marker, work raglan st, slip marker, k2tog; repeat from * to end.

Continue like this until the work measures 23 (26) 32 (36) 40 cm / 9.1 (10.2) 12.6 (14.2) 15.7" cm measured along the front piece.

Bo for the neck opening while working raglan decreases as follows:

Bo 3,2,2,1 (3,3,2,2) 3,3,3,2 (3,3,4,2) 3,4,4,2 sts for the neck opening in the beginning of the row (don't forget the raglan decreases). Decrease on both RS and WS of the work. If the first number for your size is 3, bo 3 sts at the beginning of the RS row and 3 sts at the beginning of the following WS row. This counts as the first decrease.

Continue like this until all sts are decreased as stated above.

Work another 3 (4) 4 (6) 8 rows while still working raglan decreases. Put the sts on hold.

Neckline

Pick up sts evenly across the front edge and neck using needle 4 mm (US 6). Work the sts on hold and then pick up sts on the opposite side. Work 6 rows in rib stitch. Bo with the Italian bind off method.

Front edging

Pick up sts across the left front edge using needle 4 mm (US 6).

Pick up 3 sts per 4 sts until you have picked up a total of approx. 59 (61) 63 (67) 71 sts. Make sure to have an odd number of sts. Work 7 rows in rib stitch (p1, k1) and bo with the Italian bind off

method. Do the same with the right front edge, but on row 4, make 5 (5) 5 (5) 6 button holes evenly across as follows: K2tog, yo.

Make sure that the number of sts on the 2 front edges are identical.

Sew together the holes below the sleeves from the RS with kitchener stitch and weave in the ends.

Pockets

Count 5 sts from the button band and 8 sts from the bottom ribbing. Let a long strand of yarn run for the attachment of the pocket later on. Pick up 20 (20) 22 (22) 24 sts horizontally and work 24 (24) (26) 26 (28) rows in stockinette stitch. Then work 5 rows in rib stitch (k2, p2). Be loosely and let a long strand of yarn run. Now use the strands of yarn to attach the sides of the pockets to the cardigan.

Crescent moon and heart

General information

The crescent moon and the heart are worked in knit stitches unless otherwise indicated. They are worked double, and the open edge is crocheted together. The charts are indicative. Therefore, follow the description below.

Crescent moon

On the crescent moon, work edge sts as follows: The first st is always knit through the back loop, and the last st is always slipped purlwise with the yarn in front of the work. The increases are always placed right after or right before the edge sts.

Co 7 sts.

Row 1: Edge st, M1, M1, k1, M1, M1, edge st.

Row 2: Edge st, M1, M1, k5, M1, M1, edge st.

Row 3: Edge st, M1, M1, k9, M1, M1, edge st.

Row 4: Edge st, M1, M1, k13, M1, M1, edge st.

Row 5: Edge st, M1, k19, M1, edge st.

Row 6: Edge st, M1, k21, M1, edge st.

Row 7: Edge st, M1, k23, M1, edge st.

Row 8: Edge st, M1, k25, M1, edge st.

Rows 9-13: Edge sts, k29, edge st.

Row 14: Edge st, p29, edge st.

Rows 15-18: Edge sts, k29, edge st.

Row 19: Edge st, k2tog, k25, k2tog, edge st.

Row 20: Edge st, k2tog, k23, k2tog, edge st.

Row 21: Edge st, k2tog, k21, k2tog, edge st.

Row 22: Edge st, k2tog, k19, k2tog, edge st.

Row 23: Edge st, k2tog, k2tog, k13, k2tog, k2tog, edge st.

Row 24: Edge st, k2tog, k2tog, k9, k2tog, k2tog, edge st.
 Row 25: Edge st, k2tog, k2tog, k5, k2tog, k2tog, edge st.
 Row 26: Edge st, k2tog, k5, k2tog, edge st.
 Row 27: Edge st, k2tog, k5, edge st.

Bo. Do not cut off the yarn. Fold the moon along the centerline to create a crescent shape. The center line now forms the outside of the crescent moon while the opening is on the inside. Use slip stitches (crochet) to lead the yarn to the tip and close it in one procedure. Weave in the end.

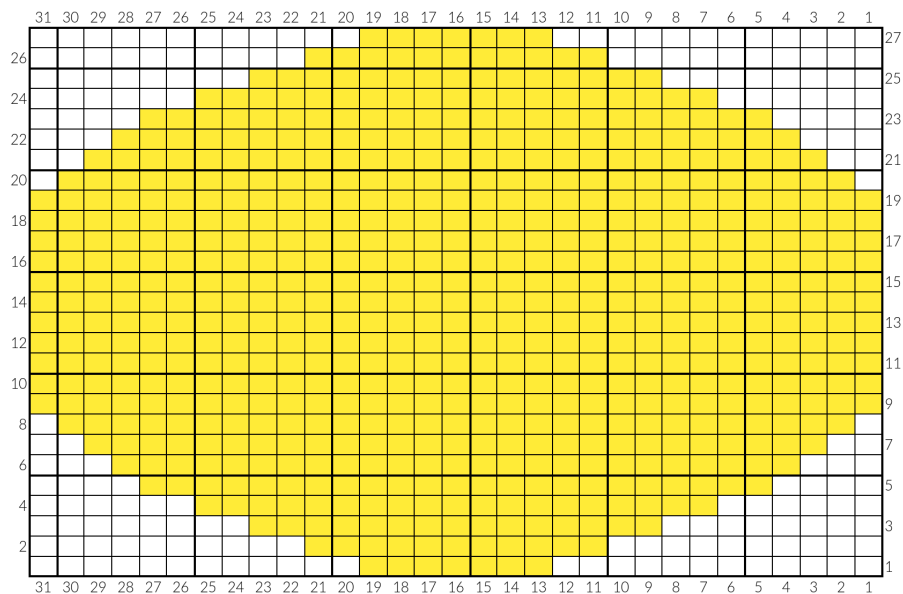
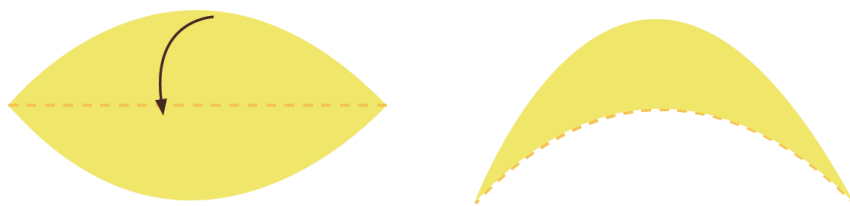


Chart (indicative)



Fold the moon

Heart

Co 6 sts and k across.

Row 1: M1, k4, M1.

Row 2: K to end.

Row 3: M1, k6, M1.

Row 4: K to end.

Row 5: M1, k8, M1.

Row 6: K to end.

Row 7: K11, M1.

Row 8: K to end.

Row 9: K12, M1.

Row 10: K to end.

Row 11: K2tog, k11, M1.

Row 12: K to end.

Row 13: K2tog, k11, M1.

Row 14: K to end.

Row 15: K2tog, k11, M1.

Row 16: K to end.

Row 17: K2tog, k11, M1.

Row 18: K to end.

Row 19: M1, k11, k2tog.

Row 20: K to end.

Row 21: M1, k11, k2tog.

Row 22: K to end.

Row 23: M1, k11, k2tog.

Row 24: K to end.

Row 25: M1, k11, k2tog.

Row 26: K to end.

Row 27: K12, k2tog.

Row 28: K to end.

Row 29: K11, k2tog.

Row 30: K to end.

Row 31: K2tog, k8, k2tog.

Row 32: K to end.

Row 33: K2tog, k6, k2tog.

Row 34: K to end.

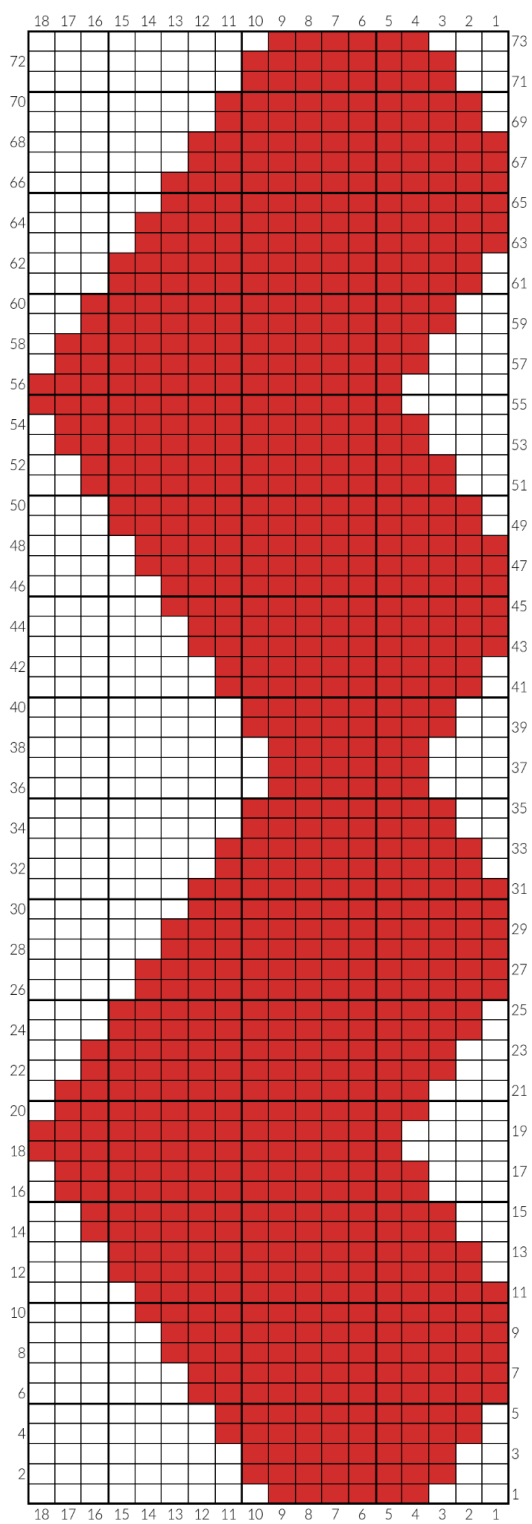
Row 35: K2tog, k4, k2tog.

Row 36: K to end.

Row 37: K to end.

Repeat rows 1-36 one more time and bo.

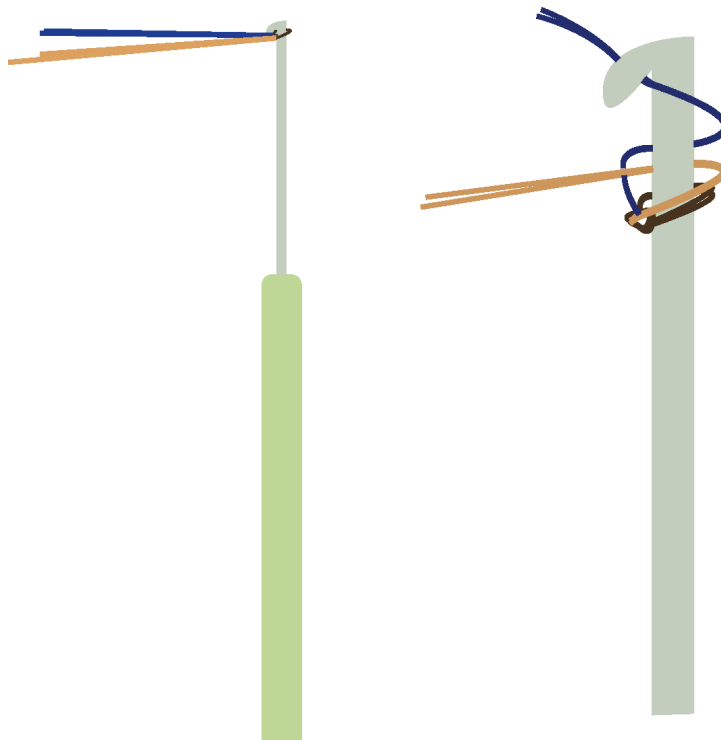
Fold the heart to make it double and close it by crocheting along the edge. Weave in the end.



Crocheted i-cord and attaching

Crochet a small cord that must be used to attach the heart and the moon to the cardigan. Use the i-cord technique. I recommend that you use the same color as for the pocket.

Measure a strand of 50 cm / 19.7" and make a loop like when you cast on sts. You now have 2 loose strands. The first strand is wound around the crochet hook to the left while the second strand is wound to the right. Pull strand 2 through strand 1 and the loop. Continue like this until the i-cord measures approx. 10 cm / 3.9".



Make 2 cords and attach them to the moon and the heart.

Sew the elements onto the cardigan. Identify the middle of the pocket and attach the cord right below the ribbing.

Happy Crafting!

RWD STUDIO