

DEMETER - BEADED SHAWL

Jumbo blanket shawl with beaded tassel fringe



Totally immerse yourself in the warmth of the Demeter Beaded Shawl. Named for the Greek goddess of the harvest, this jumbo blanket shawl spans 93" (236.25cm) to cocoon you in the cozy feels of autumn. Thin stripes of coordinating colors transition into a border of textured stitches, and finished with a twisted fringe border. If drama is what you want, drama is what you get in this oversized triangle shawl.

The Demeter Beaded Shawl pattern is part of the Happy Place pattern collection, designed to complement Happy Place Apricity Yarn. Find even more patterns and get the yarn needed for this project from Hobbii's website.

Pattern by Toni of TL Yarn Crafts
Let's connect on Instagram - [@TLYarnCrafts](#)
Tag your projects with [#TLYCMakers](#)





PROJECT SUPPLIES

YARN: Hobbii Happy Place Apricity, super bulky weight (#6); 65% alpaca, 28% polyamide, 7% wool [7 yards per 50g skein].

- 3 skeins each of colors 18 (A), 06 (B), 21 (C), 02 (D), and 05 (E).

HOOK: US N/P (10mm) Tunisian crochet hook with cords up to 70" (178cm) – longest cord made by attaching two cords together, US C-2 (2.75mm) crochet hook; adjust hook size to meet gauge.

NOTIONS: Scissors, tapestry needle, tape measure, at least 50 6mm round wood beads, steam blocking supplies.

BUY THE YARN HERE:

<https://shop.hobbii.com/demeter-beaded-shawl>

DIMENSIONS

FINISHED SIZE: Shawl has 93" (236.25cm) wingspan and 45" (114.25cm) depth, blocked, not including fringe

GAUGE: 11 rows x 15 sts in Tunisian simple stitch = 6" (15.25cm)

PATTERN NOTES + TUTORIALS

- For this shawl, you need to know the basics of Tunisian crochet (TC), how to crochet the Tunisian simple stitch, reverse stitch, as well as color changes. Use these video links to master the skills: [Tunisian crochet for beginners + simple stitch](#); [Tunisian reverse stitch](#); [TC color changes](#).
- Carry all colors up the side of the work – DO NOT fasten off after each color change.
- This pattern is made to use nearly every inch of the 15 skeins included. Please take time to achieve the correct gauge before you begin to ensure you have enough yarn to meet the intended dimensions.



ABBREVIATIONS

CC = change color

Ch = chain

Inc = Increase (see *Special Stitches*)

Lts = Last Tunisian Stitch (see *Special Stitches*)

RetP = Return Pass (see *Special Stitches*)

Sl St = slip stitch

St(s) = stitch(es)

Trs = Tunisian reverse stitch

Trs-slst = Tunisian reverse slip stitch (see *Special Stitches*)

Tss = Tunisian simple stitch

Yo = yarn over

PATTERN DIRECTIONS

SPECIAL STITCHES

Increase (inc): Pull up a loop in the space directly after the stitch just completed. The next stitch is the vertical bar after the increase.

Last Tunisian Stitch (Lts): Insert hook under BOTH vertical bars of the last stitch and pull up a loop.

Return Pass (RetP): Ch 1, (yarn over, pull through next 2 loops on hook) until 1 loop remains on the hook.

Tunisian Reverse Stitch Slip Stitch (trs-slst): Insert hook in next stitch as for Tunisian reverse stitch, yarn over, pull up a loop, pull through remaining loop on hook.

MAKING FRINGE

When instructed, **make fringe** as follows:

1. Stretch loop on hook to 12" (30.5cm) (use tape measure if needed).
2. Add bead to loop using the 2.75mm hook.

3. Twist loop 30 times and bring tip of loop to meet shawl edge – the fringe will bounce back and twist on itself. I chose to remove the loop from the hook to twist. If you do too, replace the loop onto the 10mm hook after this step.
4. Sl st in next st.

SHAWL PATTERN

BODY

Change color at the end of every row, completing 1 row each of colors A, B, C, and D. Carry yarns throughout shawl.

FOUNDATION ROW: Using A and larger hook, leave a 6" (15.25cm) tail and ch 8, pull up a loop in the back bump of the 2nd ch from the hook and each remaining ch, ch 1, (yo, pull through 2 loops) until 2 loops remain on hook, cc to B. *(8 sts)*

ROW 1: Tss 1, (yo, tss 1) 2 times, (tss 1, yo) 2 times, tss 1, Lts, RetP. *(12 sts)*

ROW 2: Tss 1, yo, tss the yo, tss to next yo, tss the yo, yo, tss 2, yo, tss the yo, tss to next yo, tss the yo, yo, tss 1, Lts, RetP. *(16 sts)*

Repeat Row 2, continuing to change to the next color after each row. Continue until you've worked through all three skeins of each color A-D until you complete the last full row you can with the yarn you have. I was able to achieve 14 total color sequence repeats + 3 additional rows (59 total rows).

After last row, cc to color E. Fasten off all other colors.

BORDER

ROW 1: With color E, repeat Row 2 from previous section.

ROWS 2-7: Tss 1, yo, tss the yo, **trs** to next yo, tss the yo, yo, tss 2, yo, tss the yo, **trs** to next yo, tss the yo, yo, tss 1, Lts, RetP.

BIND OFF + FRINGE

The fringe is made as part of the bind off.

BIND OFF: Sl st next st and yo, trs-slst next st, (make fringe – see **Making Fringe** above, sl st 2) across row to last 3 sts, maintaining the following pattern – trs-slst each trs, sl st each tss and yo; at last 3 sts, sl st the yo and next st, sl st last st as for Lts.

Fasten off final color and weave in all ends.

Open all fringe and adjust the bead placement to bottom of loop, then gently retwist the fringe.

Steam block to final dimensions. When blocking, lightly stretch each fringe and pin it for added drape.

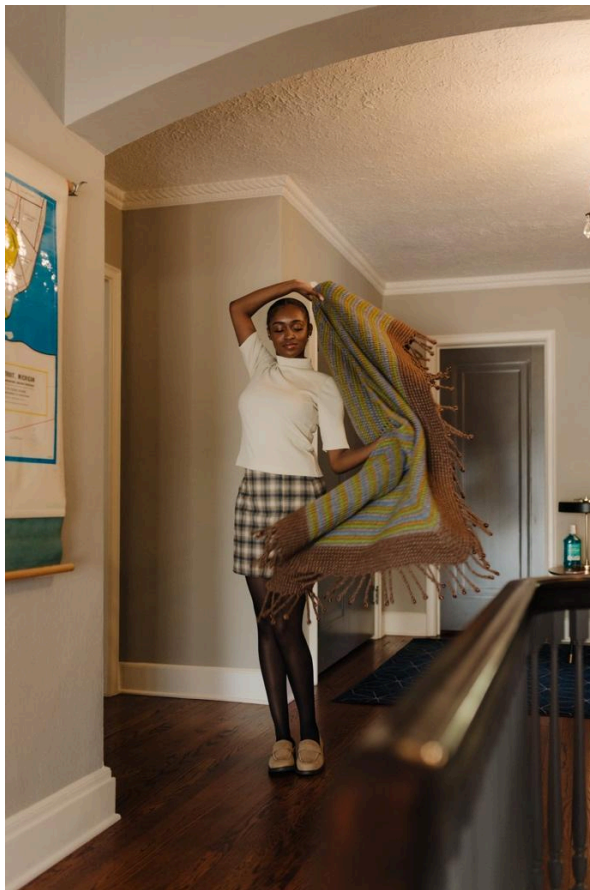


Image of shawl while blocking:



Pattern and images ©TLYarnCrafts. Do not reproduce, duplicate, redistribute, or sell. Sale of products made using this pattern is permitted; when selling online, credit TLYarnCrafts.