



KNITTING PATTERN

Woodland

Sweater

Design: Anna-Sofia Vintersol @loparefur | Hobbii Design

MATERIALS

MC/C1:

(8, 8, 8) (9, 9, 10) (10, 11, 11) skeins of

Highland Wool color 09

(6, 6, 6) (7, 7, 8) (8, 9, 9) skein(s) of **Friends**

Kid Silk color 124

C2:

(1, 1, 1) (1, 1, 2) (2, 2, 2) skein(s) of **Highland**

Wool color 02

1 skein of **Friends Kid Silk** color 02

C3:

1 skein of **Highland Wool** color 29

1 skein of **Friends Kid Silk** color 52

C4:

1 skein of **Highland Wool** color 34

1 skein of **Friends Kid Silk** color 49

Circular needle: 3.5 mm, 40 cm / US 4, 16"

Circular needle: 4.5 mm, 40 cm / US 7, 16"

Circular needle: 3.5 mm, 80 cm / US 4, 31.5"

Circular needle: 4.5 mm, 80 cm / US 7, 31.5"

Cable needle

Stitch markers

Embroidery needle

YARN QUALITY

 **Highland Wool**, Hobbii

100 % Peruvian Highland Wool

50 g / 1.8 oz = 175 m / 191 yds

 **Friends Kid Silk**, Hobbii

72 % Mohair, 25 % Silk, 3 % Wool

25 g / 0.9 oz = 200 m / 246 yds

GAUGE

18 sts x 24 rows = 10 cm x 10 cm / 4" x 4"

HASHTAGS FOR SOCIAL MEDIA

#hobbii design #hobbii woodland

#annasofia vintersol

QUESTIONS

If you have any questions regarding this pattern, please feel free to email us at support@hobbii.com. Please make sure to include the pattern's name and number.

Happy Crafting!

SIZE

(2XS, XS, S) (M, L, XL) (2XL, 3XL, 4XL)

MEASUREMENTS

Chest: (70, 80, 87) (96, 107, 113) (120, 133, 140) cm / (28, 31.6, 34.4) (37.8, 42.1, 44.5) (47, 52.5, 55.1) inches

Body length: 50 cm / 19.75 inches *or to be determined based on personal preference and fit.*

Arm length: (45, 46, 46) (48, 51, 52) (52, 52, 56) cm / (17.8, 18.2, 18.2) (19, 20.1, 20.5) (20.5, 20.5, 22.1) inches

PATTERN INFORMATION

The Woodland sweater is a seamless sweater worked from the bottom up with color work and embroidered details. This sweater combines practical construction with enchanting details, perfect for both novice and seasoned knitters. Crafted in the round, the body and sleeves are initially worked separately before being joined to form the yoke. The neck is finished with a soft rolled edge for a comfortable and stylish look. Detailed embroidery, inspired by the forest's mushrooms and florals, is added at the end to capture the magic of the woodland.

Techniques: Includes moss stitch rib, stockinette stitch, simple cable/lace work and simple embroidery.

Ease: Recommended positive ease of 2.5-10 cm (1-4 inches).

BUY THE YARN HERE

<https://shop.hobbii.com/woodland-sweater>

Pattern



ABBREVIATIONS

K = Knit

P = Purl

CO = Cast on

MC = main color

C = color

INFO AND TIPS

If you're unsure which size to choose, I recommend opting for the smaller size, as the garment will stretch and widen over time due to the high percentage of wool in the yarn.

SPECIAL STITCHES

How to knit a Bobble or Popcorn

Knit into the front of the first stitch on your needle, into the back, and front again. (3 stitches on the needle).

Turn your work and purl the 3 stitches back, then turn back and knit the 3 stitches again.

Pass the first two stitches over the last stitch and move to the right-side needle to complete the bobble/popcorn.

How to increase

Left-Leaning Increase (M1L):

Pick up the bar between stitches from front to back and knit through the back loop.

Right-Leaning Increase (M1R):

Pick up the bar between stitches from back to front and knit through the front loop.

How to decrease

Left-Leaning Decrease (SSK):

Slip 1 stitch knit wise, slip the next stitch knit wise, then knit these 2 stitches together through the back loops.

Right-Leaning Decrease (K2tog):

Knit 2 stitches together.



BODY

Co (126, 144, 156) (174, 192, 204) (216, 240, 252) stitches with the main color (1 strand of Highland Wool and 1 strand of Friends Kid Silk held together) using size 3.5 mm (US 4) needle. Place a stitch marker to mark the beginning of the round and after (63, 72, 78) (87, 96, 102) (108, 120, 126) stitches to mark the front and back sides.

Work moss stitch rib ("k 1, p 1 / p 1, k 1") for 7.5 cm (3 in).

Change to size 4.5 mm (US 7) needle. Continue in stockinette stitch until the work measures (42, 42, 42) (44, 46, 48) (48, 48, 50) cm (16.6, 16.6, 16.6) (17.4, 18.2, 19) (19, 19, 19.8) in or desired length. The sample shown has a cropped body length of 32 cm (12.6 in).

Place the first (3, 5, 6) (6, 7, 7) (7, 8, 8) and the last (4, 5, 6) (7, 7, 8) (7, 8, 9) stitches on a stitch holder or waste yarn for the underarm, totaling (7, 10, 12) (13, 14, 15) (14, 16, 17) stitches. The stitches for the other armhole will be placed on hold when you start the yoke. Set the work aside and knit the sleeves.

SLEEVES

Co (36, 36, 36) (42, 42, 48) (48, 48, 48) stitches with MC using size 3.5 mm (US 4) needle. Place a stitch marker to mark the beginning of the round.

Work moss stitch rib ("k 1, p 1 / p 1, k 1") for 7.5 cm (3 in).

Change to size 4.5 mm (US 7) needle. Knit 1 round. Continue in stockinette stitch while increasing 2 stitches every 5th round (1 stitch after the first stitch of the round, and 1 stitch before the last stitch of the round) until you have (55, 60, 66) (67, 68, 72) (72, 72, 76) stitches.

Continue until the work measures (45, 46, 46) (48, 51, 52) (52, 52, 56) cm (17.8, 18.2, 18.2) (19, 20.1, 20.5) (20.5, 20.5, 22.1) in or desired length.

Place the first (3, 5, 6) (6, 7, 7) (7, 8, 8) and the last (4, 5, 6) (7, 7, 8) (7, 8, 9) stitches on a stitch holder or waste yarn for the underarm, totaling (7, 10, 12) (13, 14, 15) (14, 16, 17) stitches.

Knit the second sleeve in the same manner as the first.

YOKE

Join the body and sleeves on a size 4.5 mm (US 7) circular needle. Place a stitch marker to mark the beginning of the round at the first join.

Knit over the first sleeve. Knit over the front side. Transfer the next (7, 10, 12) (13, 14, 15) (14, 16, 17) stitches onto a stitch holder or waste yarn for the underarm. Knit over the other sleeve and back side. You should now have (208, 224, 240) (256, 272, 288) (304, 320, 336) stitches.

Work the pattern according to the Chart and decrease as directed. Change to a shorter needle if necessary. After completing the chart, (78, 84, 90) (96, 102, 108) (114, 120, 126) stitches will remain on the needles.

NECK

Change to a size 3.5 mm (US 4) circular needle.

Work 5 rounds of stockinette stitch in the main color (C1) to achieve a rolled edge. Loosely bind off.

Add embroidery according to the instructions.

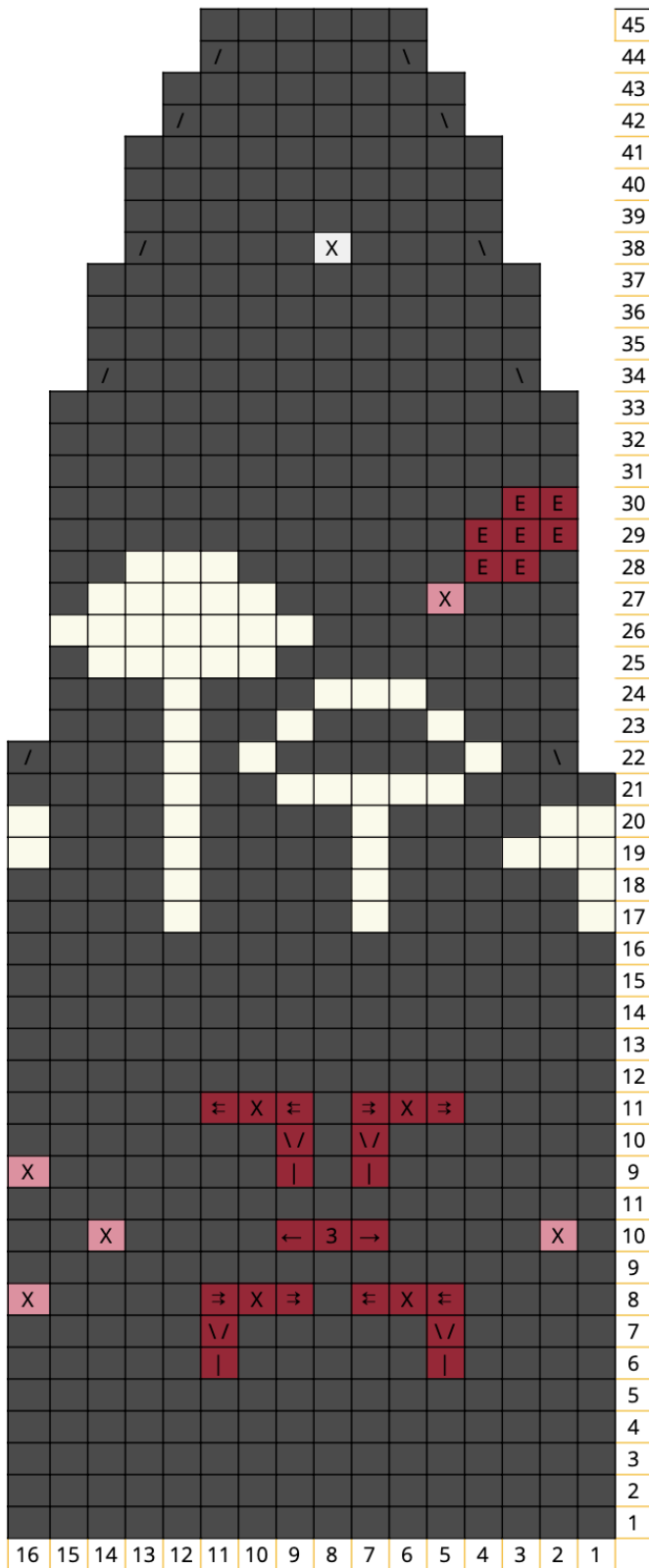
Embroidery leaves

1. Cut a thread approximately 1 meter long from both types of Col 3 yarn.
2. Thread the embroidery needle and bring the thread from the wrong side of the garment to the right side, positioning it as close as possible to the edge of the popcorn stitch. Leave about a 5 cm tail on the inside.
3. Wrap the yarn around your pinky finger, then insert the needle back into the fabric, right next to the first exit point, pulling the yarn through to the wrong side again.
4. Bring the needle back to the right side of the fabric, about 1 cm (0.4 in) from the previous stitch.
5. Insert the needle back into the fabric while wrapping the thread around the section of yarn that was wrapped around your pinky finger.
6. Repeat the process to create additional leaf shapes.

Enjoy!

Anna-Sofia Vintersol @loparefur

Chart



NOTE:

- 45
- 44
- 43 Row 1: Skip for sizes (2XS, XS, S)(M, L, XL)
- 42
- 41
- 40 Row 2: Skip for sizes (2XS, XS, S)(M, L)
- 39
- 38
- 37 Row 15: Skip for sizes (2XS, XS, S)(M)
- 36
- 35
- 34 Row 32: Skip for sizes (2XS, XS, S)
- 33
- 32 Decrease row 22:
- 31 (182, 196, 210)(224, 238, 252)(266, 280, 294) stitches after decreasing
- 30
- 29
- 28 Decrease row 34:
- 27 (156, 168, 180)(192, 204, 216)(228, 240, 252) stitches after decreasing
- 26
- 25
- 24
- 23 Decrease row 38:
- 22 (130, 140, 150)(160, 170, 180)(190, 200, 210) stitches after decreasing
- 21
- 20
- 19
- 18 Decrease row 42:
- 17 (104, 112, 120)(128, 136, 144)(152, 160, 168) stitches after decreasing
- 16
- 15
- 14
- 13 Decrease row 44:
- 12 (78, 84, 90)(96, 102, 108)(114, 120, 126) stitches after decreasing
- 11
- 10
- 9
- 8
- 7
- 6
- 5
- 4
- 3
- 2
- 1

Symbol Key



MC/C1



C2



C4



C3



left leaning decrease



right leaning decrease



Popcorn



Embroidery

Cable Instructions



Create a new stitch and increase it to 5 by wrapping the yarn around the needle multiple times.



Transfer 3 slipped stitches to a cable needle and hold in front. Knit the next two stitches, slip one, then knit two together and pass the slipped stitch over all stitches on the cable needle.



Move the first two stitches to a cable needle and hold them in the back.

Knit 3 together with the slipped stitches from the previous row, then knit the two stitches from the cable needle



K, p, k, and transfer these stitches onto a cable needle. Wrap the working yarn around these stitches counterclockwise before placing the stitches on the right needle

