



KNITTING PATTERN

Woodland

Shawl

Design: Anna-Sofia Vintersol @loparefur | Hobbii Design

MATERIALS

MC/C1:

6 skeins of **Highland Wool** color 09
6 skeins of **Friends Kid Silk** color 124

C2:

4 skeins of **Highland wool** color 02
4 skeins of **Friends Kid Silk** color 02

C3:

1 skein of **Highland wool** color 29
1 skein of **Friends Kid Silk** color 52


C4:


1 skein of **Highland wool** color 34
1 skein of **Friends Kid Silk** color 49

Keep in mind that you will need more yarn if you knit a larger shawl or less if you knit a smaller shawl.

Circular needles 3.5 mm, 80 cm / US 4, 31.5"
Circular needles 4.5 mm, 80 cm / US 7, 31.5"
Stitch markers

YARN QUALITY

 **Highland Wool**, Hobbii
100 % Peruvian Highland Wool
50 g / 1.8 oz = 175 m / 191 yds

 **Friends Kid Silk**, Hobbii
72 % Mohair, 25 % Silk, 3 % Wool
25 g / 0.9 oz = 200 m / 246 yds

GAUGE

18 sts x 24 rows = 10 cm x 10 cm / 4" x 4"

SIZE

Onesize

MEASUREMENTS

Wingspan: 176 cm / 69.3 in

The size of this shawl can be easily adjusted from a wingspan of approx. 50 cm / 19.7 in up to approx. 200 cm / 78.7 in.

PATTERN INFORMATION

The Woodland shawl is knitted in the round with steeking. Increase as mentioned below and follow the charts. The shawl is knitted from the spine outward. The pattern has different increases on even and odd rounds, as explained below. Increases occur at the edges and in the center similar to a raglan increase, creating a clear spine.

Techniques: Includes moss stitch rib, stockinette stitch, simple cable/lacework, and simple embroidery.

HASHTAGS FOR SOCIAL MEDIA

#hobbiidesign #hobbiiwoodland
#annasofiavintersol

BUY THE YARN HERE

<https://shop.hobbii.com/woodland-shawl>

QUESTIONS

If you have any questions regarding this pattern, please feel free to email us at support@hobbii.com. Please make sure to include the pattern's name and number.

Happy Crafting!

Pattern



ABBREVIATIONS

K = Knit

P = Purl

CO = Cast on

MC = main color

C = color

SM = Stitch marker

Kfb = Knit into the front and back of a stitch

Ktfl = Knit through front loop

EOR = end of round

yo = yarn over

sl = slip

yo-b = yarn over backwards (wrapping the yarn around the needle backwards)

SPECIAL STITCHES

How to knit a Bobble or Popcorn

Knit into the front of the first stitch on your needle, into the back, and front again. (3 stitches on the needle).

Turn your work and purl the 3 stitches back, then turn back and knit the 3 stitches again.

Pass the first two stitches over the last stitch and move to the right-side needle to complete the bobble/popcorn.

How to make a Tassel

Take a bundle of threads and lay them evenly. For this example, I am using 40 threads to create a thick and fluffy tassel. Cut the threads to approximately 20 cm (8 in) in length; this will give you tassels that are about 8 cm (3 in) from top to bottom. Place a strong thread, such as embroidery thread, underneath the middle of the tassel. Do not tighten this thread yet—it will be used later to secure the tassel and attach it to your work. Next, place another thread approximately 1 cm (0.4 in) below the edge where you positioned the first thread, and tighten it. Now, tighten the upper thread, and voila, your tassel is ready!

PATTERN

CO 3 stitches using a 4.5 mm (US 7) needle with the main color (MC). Work the first 6 rows back and forth on the needle, without increasing. After the last row, do not turn. Instead,

pick up 3 stitches along the edge of the knitted section. Then, CO 4 stitches for the steek. Pick up 3 stitches along the other side as well. You should now have 13 stitches on the needle.

Place the markers:

Once you have joined in the round and knitted the steek, place the markers as follows (you have 13 stitches on the needle):

Place a stitch marker for the beginning of the round (skip this if you've already done it).

K1, place SM1,

K3, place SM2,

K1 (the center stitch), place SM3,

K2, place SM4,

K2, place the final stitch marker to mark the end of the round (the 4 stitches for the steek).

Important: The stitches are not placed evenly due to the kfb (knit into the front and back of a stitch) increase, which will make everything symmetrical once your project is complete. From now on, you will increase every round. The method is explained below.

INCREASE INSTRUCTIONS

Rounds 1-39 * (knit without chart)

Note: This is the first point where you can choose to knit more or fewer rounds for a longer or shorter shawl. The instructions given here will result in a wingspan of approximately 176 cm (69.3 in).

All Odd-Numbered Rows:

K1, SM1, kfb, work in pattern until SM2, yo-b, SM2, k1, SM3, yo, work in mirrored pattern until 1 st before SM4, kfb, SM4, k2, SM-EOR, k4. (4 sts increased)

Written Out:

Knit 1, slip stitch marker 1, knit into the front and back of a stitch, work the chart until stitch marker 2, yarn over backwards (wrapping the yarn around the needle backwards), slip stitch marker 2, knit 1, slip stitch marker 3, yarn over, work in mirrored chart until you are 1 stitch before stitch marker 4, knit into the front and back of a stitch, slip stitch marker 4, knit 2, slip stitch marker at the end of the round, knit 4. (4 sts increased)

All Even-Numbered Rows:

K1, SM1, kfb, work in pattern until the yo before SM2, ktl, SM2, sl1, SM3, ktbl, work in mirrored pattern until 1 st before SM4, kfb, SM4, k2, SM-EOR, k4. (2 sts increased)

Written Out:

Knit 1, slip stitch marker 1, knit into the front and back of a stitch, work the chart until the yarn over before stitch marker 2, knit through the front loop, slip stitch marker 2, slip 1 stitch, slip stitch marker 3, knit through the back loop, work in mirrored chart until 1 stitch before stitch marker 4, knit into the front and back of a stitch, slip stitch marker 4, knit 2, slip stitch marker at the end of the round, knit 4. (2 sts increased)

CHART INSTRUCTIONS

Rounds 40-56: Knit Chart A

Note: If you decide to knit a longer or shorter shawl, this may vary.

Now knit 20 cm / 8 in C2 in stockinette stitch.

Note: This is the second point where you can choose to knit more or fewer rounds for a longer or shorter shawl. The instructions given here will result in a wingspan of approximately 176 cm (69 in).

Work Chart B.

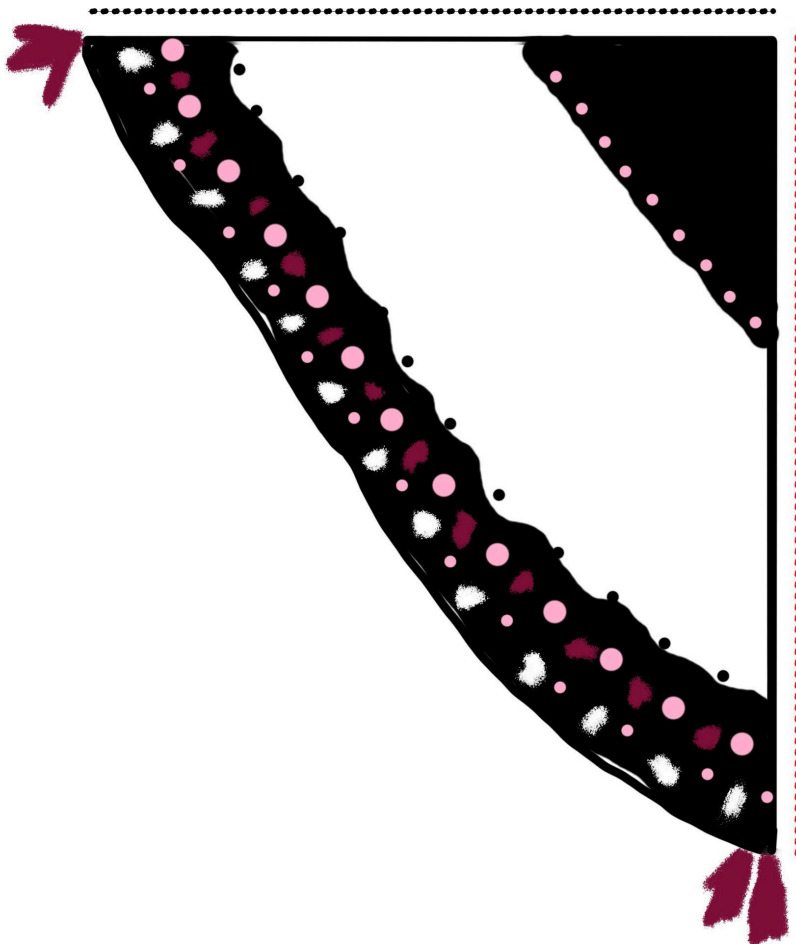
FINISHING

Knit ribbing in MC/C1 (while continuing increases) in moss stitch ("k 1, p 1 / p 1, k 1") *p1 at the beginning.

Bind off loosely.

Steek and Finish the Edges

Sew two tight seams by hand or with a sewing machine, and then cut up between the seams. Cut the steek and pick up the stitches along the edge. Knit 3 rows. Knit one more row and finish the edge. Attach the tassels.



Red line: Steek - Cut here

Black line: Shawl spine

Enjoy!

Anna-Sofia Vintersol @loparefur

CHARTS

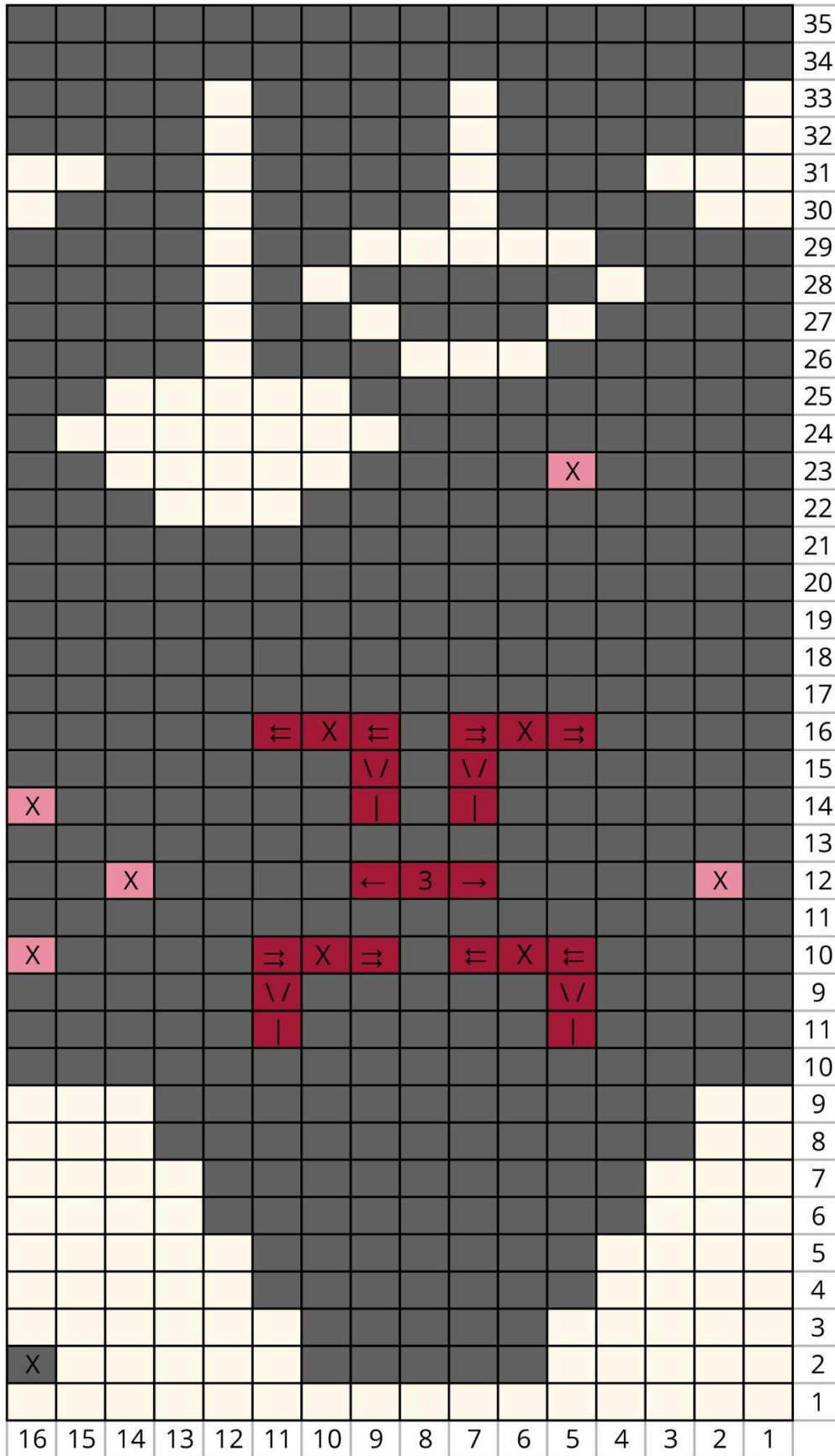
Color Key



Chart A

								8
								7
								6
								5
				X				4
								3
								2
								1
8	7	6	5	4	3	2	1	

Chart B



Symbol instruction



Create a new stitch and increase it to 5 by wrapping the yarn around the needle multiple times.



Transfer 3 slipped stitches to a cable needle and hold in front. Knit the next two stitches, slip one, then knit two together and pass the slipped stitch over all stitches on the cable needle.



Move the first two stitches to a cable needle and hold them in the back.

Knit 3 together with the slipped stitches from the previous row, then knit the two stitches from the cable needle



K, p, k, and transfer these stitches onto a cable needle. Wrap the working yarn around these stitches counterclockwise before placing the stitches on the right needle



Popcorn / Bobble stitch - see instructions under "special stitches"

