



KNITTING PATTERN

Merry Christmas

Children's Sweater

Design: Intreccidiceci | Hobbii Design



MATERIALS


Friends Wool

- 1 (1-1-2-2-2-3) skein(s) of Color 02, White
- 2 (2-2-3-3-3-4) skeins of Color 105, Emerald
- 2 (2-2-3-3-3-4) skeins of Color 40 Tomato
- 1 (1-1-1-1-1-1) skein of Color 28, Mustard

Circular needle 3.5 mm, 40 cm/US 7, 16"
Circular needle 4.5 mm, 80 cm/US 8, 31.5"

Stitch marker
Tapestry needle
Stitch wire

YARN QUALITY

 **Friends Wool**, Hobbii
100% Wool
50 g (1.75 oz) = 100 m (109 yds)

GAUGE

18 sts x 25 rows = 10 cm x 10 cm/ 4" x 4"

SIZE

- 1 = approx. 2 years
- 2 = approx. 3-4 years
- 3 = approx. 5-6 years
- 4 = approx. 7-8 years
- 5 = approx. 9-10 years
- 6 = approx. 11-12 years
- 7 = approx. 13-14 years

MEASUREMENTS

Width: 33.5 (36.5-39-41-43-44-47) cm / 13.25 (14.50-15.25-16.25-17-17.5-18.5)"
Length: 36 (40-44.5-47.5-49-50.5-54) cm /14 (15.75-17.5-18.75-19.25-19.75-21.25)"

PATTERN INFORMATION

This merry sweater is worked top down in the round. Pattern on the yoke is worked after a chart. The sleeves and body are separated and worked in the round.

The sweater is available in a women's and men's version as well.

HASHTAGS FOR SOCIAL MEDIA

#hobbiidesign #intreccidiceci
#hobbiimerrychristmas

BUY THE YARN HERE

<https://shop.hobbii.com/merry-christmas-children-s-sweater>

QUESTIONS

If you have any questions regarding this pattern, please feel free to email us at support@hobbii.com. Please make sure to include the pattern's name and number.

Happy Crafting!

Pattern



ABBREVIATIONS

BO: Bind off

BOR: Beginning of round

CO: Cast on

k: Knit

k tbl: Knit through the back loop

M1: Make-one. The most basic way to increase is knitting in the front and the back of a stitch.

p: Purl

Rnd / Rnds: Round, rounds

RS: Right side

St / Sts: Stitch, stitches

Yo: Yarn over

NECKLINE

CO 60 (64-64-68-68-72) sts with short circular needle size 3.5 mm in color 105.

Place BOR marker and join to work in the round. The round starts in the transition between the left shoulder and the back piece.

Rnd 1: K all sts

Rnd 2: *k1Tbl, p1* to the end of the round

Repeat Rnd 2 additional 9 times

Switch to needle 4.5 mm

Rnd 10: K all sts

Switch to color 40

Size 1

Rnd 11: Knit 1 rnd even where you increase 6 sts evenly spaced (66 sts)

Rnd 12: K all sts

Size 2

Rnd 11: Knit 1 rnd even where you increase 8 sts evenly spaced (72 sts)

Rnd 12: K all sts

Size 3

Rnd 11: Knit 1 rnd even where you increase 8 sts evenly spaced (72 sts)

Rnd 12: K all sts

Size 4

Rnd 11: Knit 1 rnd even where you increase 10 sts evenly spaced (78 sts)

Rnds 12 - 13: K all sts

Size 5

Rnd 11: Knit 1 rnd even where you increase 10 sts evenly spaced (78 sts)

Rnds 12- 13: K all sts

Size 6

Rnd 11: Knit 1 rnd even where you increase 16 sts evenly spaced (84 sts)

Rnds 12 -13: K all sts

Size 7

Rnd 11: Knit 1 rnd even where you increase 12 sts evenly spaced (84 sts)

Rnds 12-14: K all sts

All sizes

Rnd 13 (13-13-14-14-14-15): *K6, M1* repeat *-* till end of round = 77 (84-84-91-91-98-98) sts

Size (1-2-3)

Rnds 14-15 K all

Size (4-5-6)

Rnds 15-16 K all

Size 7

Rnds 16-18 K all

All sizes

Rnd 16 (17-19): *K7, M1* repeat *-* till end of round = 88 (96-96-104-104-112-112) sts

Size (1-2-3)

Rnds 17-18: K all size

Size (4-5-6)

Rnds 18-20: K all

Size 7

Rnds 20-23: K all

All sizes

Rnd 19 (21-24): *K8, M 1* repeat *-* till end of round = 99 (108-108-117-117-126-126) sts

Size (1-2-3)

Rnds 20-21: K all sts

Size (4-5-6)

Rnds 21-23: K all sts

Size 7

Rnds 24-26: K all sts

All sizes

Rnd 22 (24-27): *K9, M1* repeat *-* till end of round = 110 (120-120-130-130-140-140) sts

Rnd: 23 (25-28): K all sts

Work **the chart** in your size a total of 11 (12-12-13-13-14-14) repeats.

Changing to longer cables when necessary

When the chart is complete there are 176 (192-192-208-208-224-224) sts on the needle

Switch to color 40

Size 1

Rnd 45: Knit all sts = 176 sts

Size 2

Rnds 45-46: K all sts

Size 3

Rnd 48: K all sts

Rnd 49: *K16, M1* repeat *-* till end of round =204 sts

Size 4

Rnd 50: K all sts

Size 5

Rnds 50-51: K all sts

Rnd 52: *K16, M1* repeat *-* till end of round = 221 sts

Size 6

Rnds 53-54: K all sts = 224 sts

Size 7

RndS 56-57: *k16, M1* repeat *-* till end of round = 238 sts

Rnd 58: K all sts

The piece measures 18 (18.5-20-20.5-21-22-23.2) cm/ 7.25 (7.5-7.75-8-8.25-8.75-9.25)"

Now divide for the body and sleeves as follows:

Remove BOR marker

K 58- (64-68-70-74-76-81)) sts. Slip 30 (32-34-34-36-36-38)) sleeve sts to a stitch wire. CO 4 (4-4-6-6-6-8) underarm sts with backward loop CO.

K 58 (64-68-70-75-76-81) sts. Slip 30 (32-34-34-36-36-38) sleeve sts to a stitch wire. CO 4 (4-4-6-6-6-8) underarm sts with backward loop CO.

=124 (136-144-152-161-164-178) sts on the needle

BODY (front+back)

Knitted in the round

K 29 (32-34-35-37-38-40)sts and place BOR marker.

Size 5

Knit 1 rnd where you increase 1 st

= 124 (136-144-152-162-164-178) sts on the needle

All sizes

Knit in stockinette until the body measures 18 (21.5-24-27.5-29-30-30.75) cm/ 7

(8.5-9.5-10.75-11.5-11.75-12.25)" from underarm CO edge, or 5 cm/2" less than desired body length.

RIBBING

Switch to needle 3.5 mm

Knit *k1 tbl, p1* ribbing for 5 cm/2".

BO loosely knitwise

SLEEVES

Make 2

Transfer 30 (32-34-34-36-36-38)) sleeve sts from stitch wire to spare needle.

With RS facing, pick up 2 (2-2-3-3-3-4) sts from CO edge, place BOR marker, pick up and 2 (2-2-3-3-3-4) more sts from CO edge. knit sleeve sts to BOR

= 34 (36-38-40-42-42-46) sts on the needle

Work the sleeve alternating 8 rounds of red and 8 rounds of white.

The first stripe should take into account the number of red rounds made in the yoke to arrive at a minimum of 8 red rounds.

Knit until sleeve measures 15 (20-24-26-30-34-37) cm/ 6 (7.75-9.5-10.25-11.75-13.5-14.5) from underarm CO edge, or 5 cm/2" less than desired sleeve length.

Switch to color 105

Dec rnd: Knit 1 rnd where you decrease 4 (6-6-6-8-8-8) sts evenly spaced

= 30 (30-32-34-34-34-38) sts on the needle

RIBBING

Switch to needle 3.5 mm

Knit *k1 tbl, p1* ribbing for 5 cm/2".

BO loosely knitwise

FINISHING

Weave in ends. Wet block

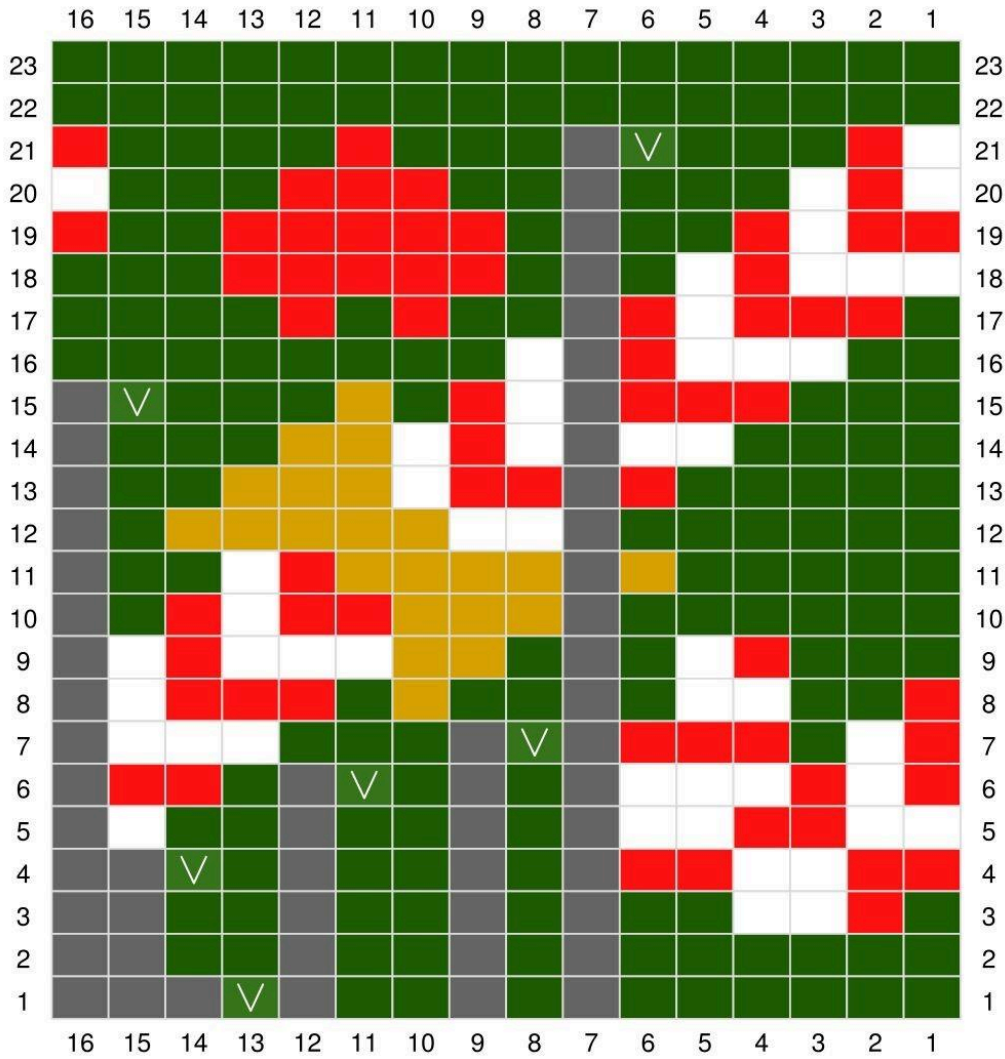


LEGEND

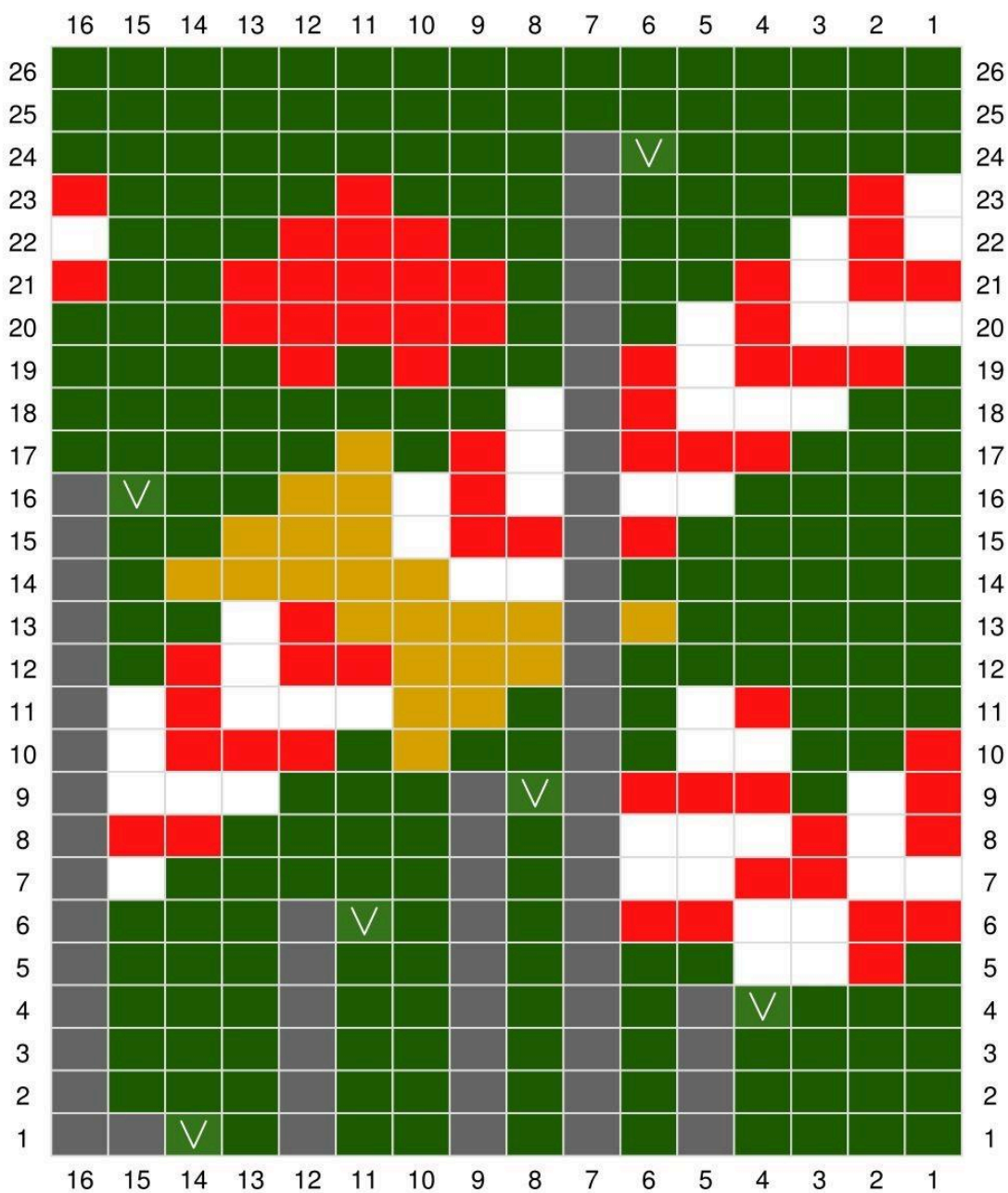
	col. 40
	col. 02
	col. 105
	col. 28
	no stitch
	Make 1

CHARTS

Size 1-2



Size 3-4-5



Sizes 6-7

