



KNITTING PATTERN

La Spiga

Cowl

Design: Intreccidiceci | Hobbii Design

MATERIALS

Highland Wool

MC: 1 (2) skein(s) of color 29

CC: 1 (2) skein(s) of color 25

Circular needle 4 mm, 40 cm /US 6, 16"

Stitch marker

Tapestry needle

YARN QUALITY

 **Highland Wool**, Hobbii

100 % Peruvian Highland Wool

50 g / 1.8 oz = 175 m / 191 yds

GAUGE

20 sts x 26 rows = 10 cm x 10 cm / 4" x 4"

ABBREVIATIONS

BO: Bind off

CC: Coordinating color

CO: Cast on

K: Knit

MC: Main color

P: Purl

PM: Place marker

Rnd / Rnds: Round, rounds

RS: Right side

St / Sts: Stitch, stitches

SIZE

S (M)

MEASUREMENTS

Width: 19.5 (19.5) cm / 7.75" (7.75")

Length: 28 (33) cm / 11" (13")

PATTERN INFORMATION

This cowl is knit in two connected layers. The outer layer is knit following a chart. The inner layer is knit in stockinette stitch with 2 alternating colors.

The cowl comes with a matching hat.

HASHTAGS FOR SOCIAL MEDIA

#hobbiidesign #hobbiilaspiga #intreccidiceci

#hobbiinaturalbeauty #hobbiilaspigacowl

BUY THE YARN HERE

<https://shop.hobbii.com/la-spiga-cowl>



QUESTIONS

If you have any questions regarding this pattern, please feel free to email us at support@hobbii.com. Please make sure to include the pattern's name and number.

Happy Crafting!

Pattern



OUTER LAYER

The sample uses a Long Tail CO method.

Using MC, CO 126 (147) sts. PM and join to work in the rnd, being careful not to twist sts.

Repeat cowl chart in color MC and CC. The chart is read from the bottom right corner to the top left corner.

The cowl chart is repeated 6 (7) times on the round a total of 46 rounds.

Without breaking the yarn we now move on to the inner layer.

INNER LAYER

Rnd 1: k1 CC, k1 MC to end of rnd.

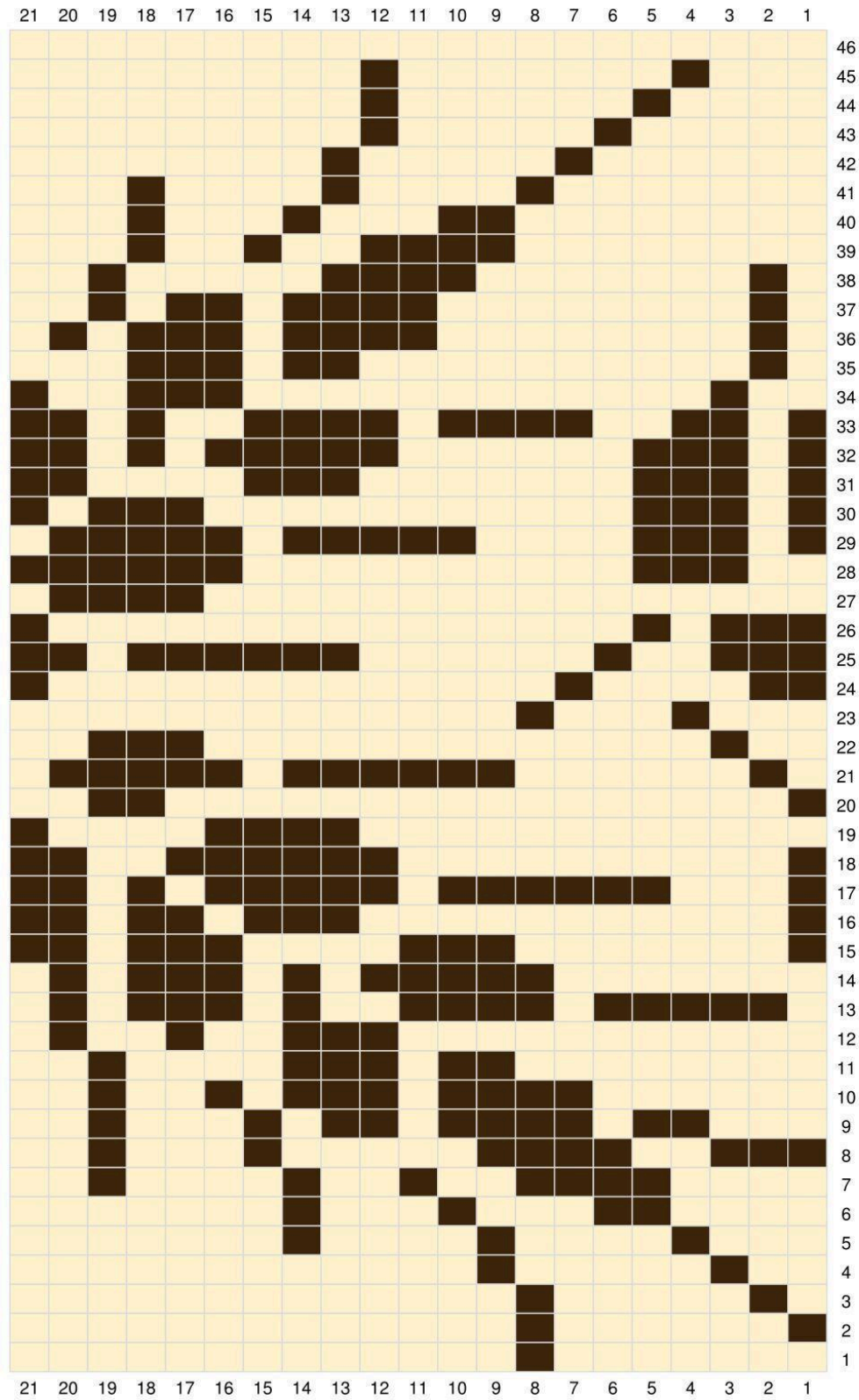
Rnd 2: k1MC, k1 CC to end of rnd.

Repeat Rnds 1-2 another 22 times or until work measures approximately 19.5 cm / 7.75".
BO loosely knitwise.

Finishing

Graft sts together using kitchener stitch. Weave in ends.

CHART



CC
 MC

Enjoy!

@intreccidiceci

