



KNITTING PATTERN

Hiedra Shawl

Wrap with Leaf Motif

Design: Esti Juango | Garland, Autumn 2024

pompom x hobbii

MATERIALS

Hobbii x Pom Pom Garland

Shade: Caterpillar; 7 balls

4mm / US 6 knitting needles

4mm / US 6 circular needle, 60cm / 24" length

Always use a needle size that will result in the correct gauge after blocking.

Stitch markers (6), cable needle (optional),
tapestry needle

YARN QUALITY

 **Garland**, Hobbii x Pom Pom

Worsted weight

70% Cotton, 30% Alpaca

105m / 114yd per 50 g

GAUGE

21 sts & 24 rows = 10cm / 4" over Lace
pattern on 4mm (US 6) needles after
blocking.

SIZE

One size

MEASUREMENTS

195cm / 77¼" long x 60cm / 23½" wide

PATTERN INFORMATION

Hiedra is worked flat, beginning at one tip
with increases every right-side row to the
centre while working a pretty leaf and
cable pattern. Decreases are then worked
every right-side row to the other tip.

HASHTAGS FOR SOCIAL MEDIA

#HiedraShawl #PomPomxHobbiiGarland

#PomPomXHobbii

BUY THE YARN HERE

<https://shop.hobbii.com/hiedra-shawl-wrap-with-leaf-motif>

QUESTIONS

If you have any questions regarding this pattern, please feel free to email us at support@hobbii.com. Please make sure to include the pattern's name and number.

Happy Crafting!

Pattern



ABBREVIATIONS

Dec(d): decrease(d)

Inc(d): increase(d)

K: knit

K2tog: knit two stitches together

K3tog: knit three stitches together

K3togtbl: knit three stitches together through the back loops

M1L: Make 1 Left; pick up strand between the two needles from the front to back with the tip of left needle, knit into the back of this stitch

M1LP: Make 1 Left Purlwise; pick up strand between the two needles from the front to back with the tip of left needle, purl into the back of this stitch

M1R: Make 1 Right; pick up strand between the two needles from back to front with the tip of left needle, knit into the front of this stitch

P: purl

Rep: repeat

RS: right side of work

Sl: slip

Ssk: Slip 2 stitches knitwise one at a time, knit them together through back loop

Ssp: Slip 2 stitches knitwise one at a time, place them back on left-hand needle, purl together through the back loops

st(s): stitch(es)

wyib: with yarn in back of work

wyif: with yarn in front of work

WS: wrong side of work

Yo: yarn over

STITCH GLOSSARY

2/2 LC Sl 2 to cable needle, hold at front, k2, k2 from cable needle.

2/1 LC Sl 2 to cable needle, hold at front, k1, k2 from cable needle.

PATTERN BEGINS

I-Cord tab cast on:

Cast on 3 sts.

Row 1 (RS): K3.

Row 2 (WS): Sl3 wyif.

Rep rows 1-2 a further 3 times.

Row 3 (RS): K3, pick up and knit 3 sts from cast on row. 6 sts

Row 4 (WS): Sl3 wyif, M1LP, sl3 wyif. 7 sts

Increase Section

Work Rows 1-40 of Chart A once. 26 sts

Work Rows 1-40 of Chart B a total of 5 times, working outlined 20-st pattern rep once more each time, for a total of 5 pattern repeats. 20 sts inc per rep; 126 sts

Decrease Section

Work Rows 1-40 of Chart C a total of 5 times, working outlined 20-st pattern rep once fewer each time. 20 sts dec per rep; 26 sts

Work Rows 1-40 of Chart D. 6 sts

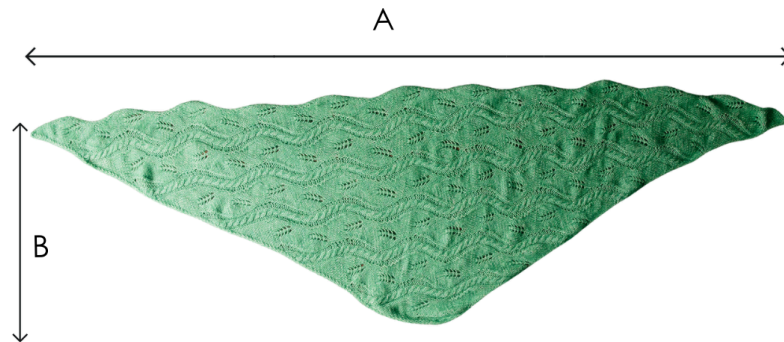
Cut yarn leaving a long tail. Slip 3 sts to another needle and graft together with the remaining 3 sts.

FINISHING

Weave in ends and block to measurements.

Enjoy!

SCHEMATIC

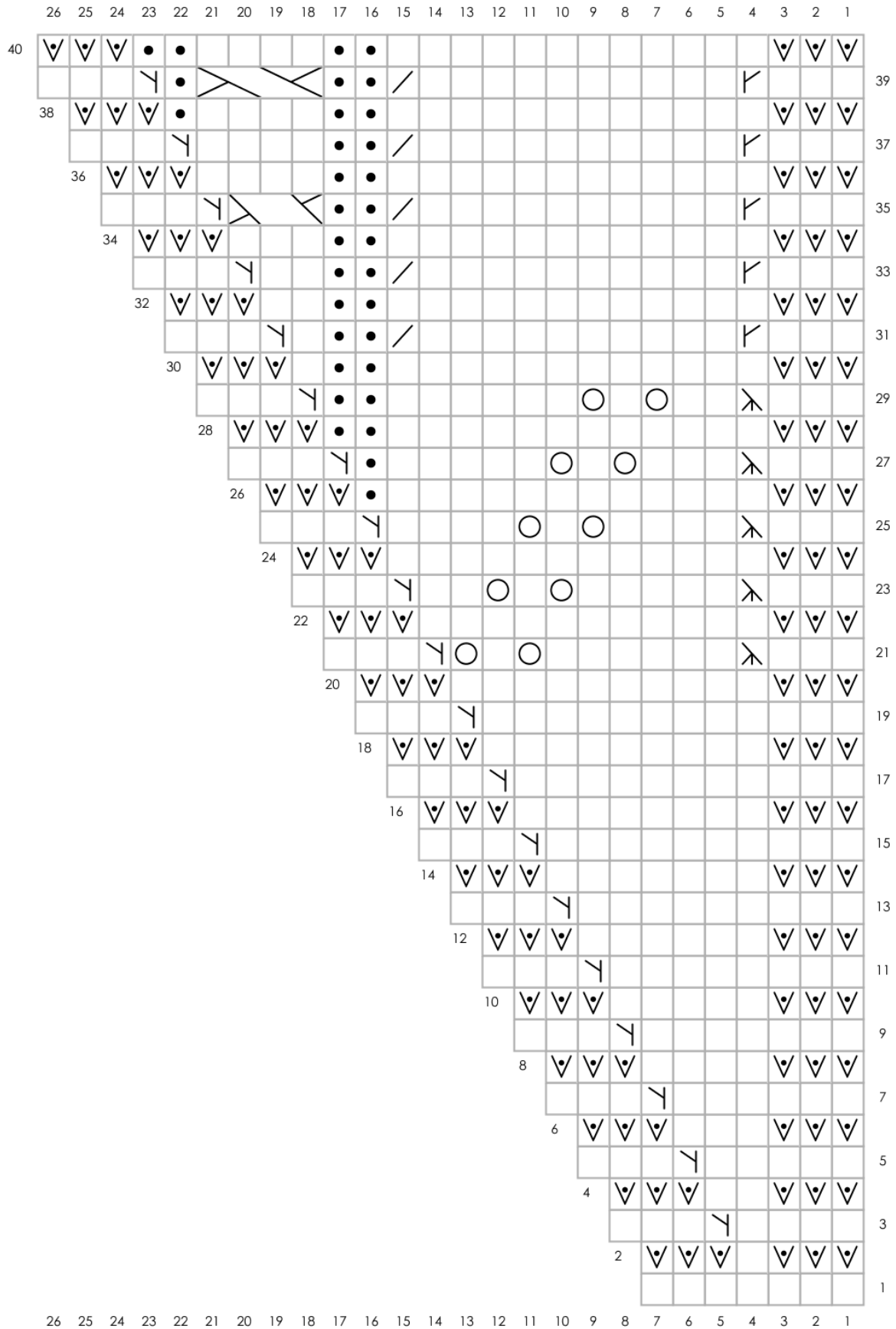


A. 195cm / 77¼"

B. 60cm / 23½"

Esti Juango (she/her) is a knitwear designer based in Pamplona in the north of Spain. She loves designing lace patterns which bring you to the present moment while knitting them.
www.ileradebu.com / [@ileradebu](https://www.instagram.com/ileradebu)

Chart A



Key



RS: knit
WS: purl



RS: purl
WS: knit



Yo



RS: k2tog
WS: p2tog



RS: slip purlwise with yarn in front
WS: slip



RS: m1 right leaning
WS: m1 purlwise right leaning



RS: m1 left leaning
WS: m1 purlwise left leaning



RS: k3tog tbl

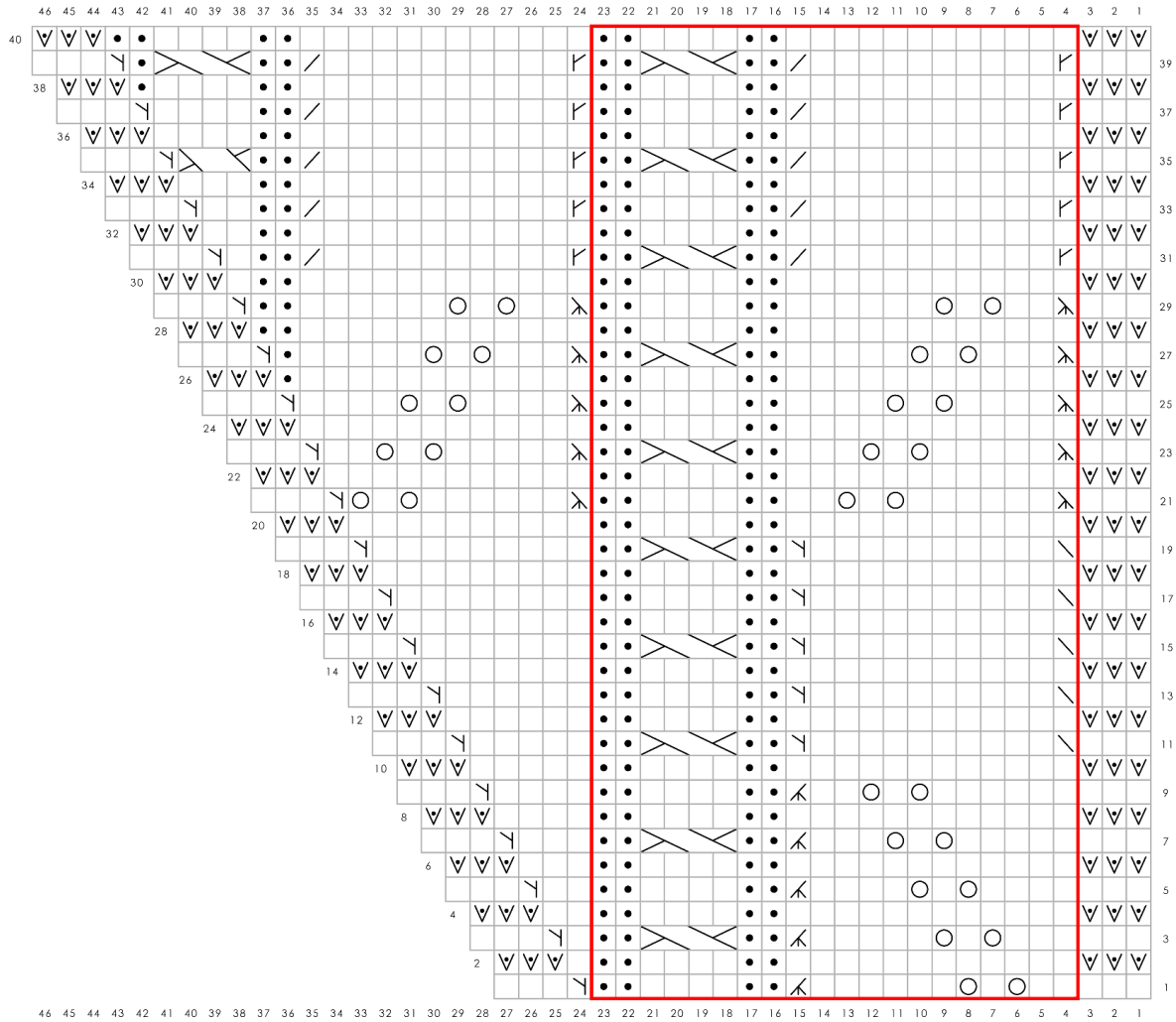


2/1 LC



2/2 LC

Chart B



Key














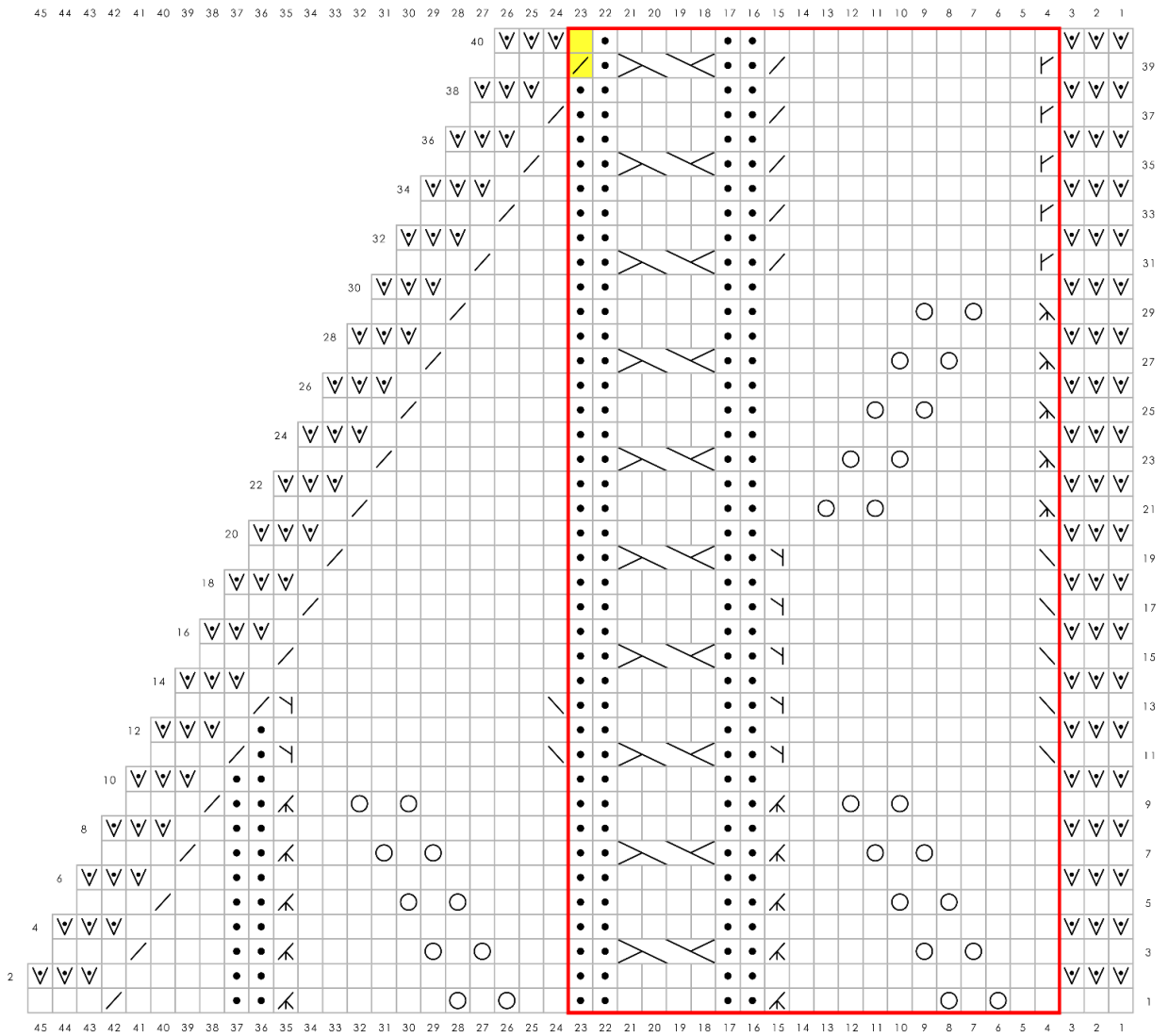
-  RS: knit
WS: purl
-  RS: purl
WS: knit
-  Yo
-  RS: k2tog
WS: p2tog
-  RS: ssk
WS: ssp
-  RS: slip purlwise with yarn in front
WS: slip
-  RS: m1 left leaning
WS: m1 purlwise left leaning
-  RS: m1 right leaning
WS: m1 purlwise right leaning
-  RS: k3tog
WS: p3tog
-  RS: k3tog tbl
-  2/1 LC
-  2/2 LC
-  Pattern repeat

Chart C



Key



RS: knit
WS: purl



RS: purl
WS: knit



Yo



RS: k2tog
WS: p2tog



RS: ssk
WS: ssp



RS: slip purlwise with yarn in front
WS: slip



RS: m1 left leaning
WS: m1 purlwise left leaning



RS: m1 right leaning
WS: m1 purlwise right leaning



RS: k3tog
WS: p3tog



RS: k3tog tbl



2/2 LC

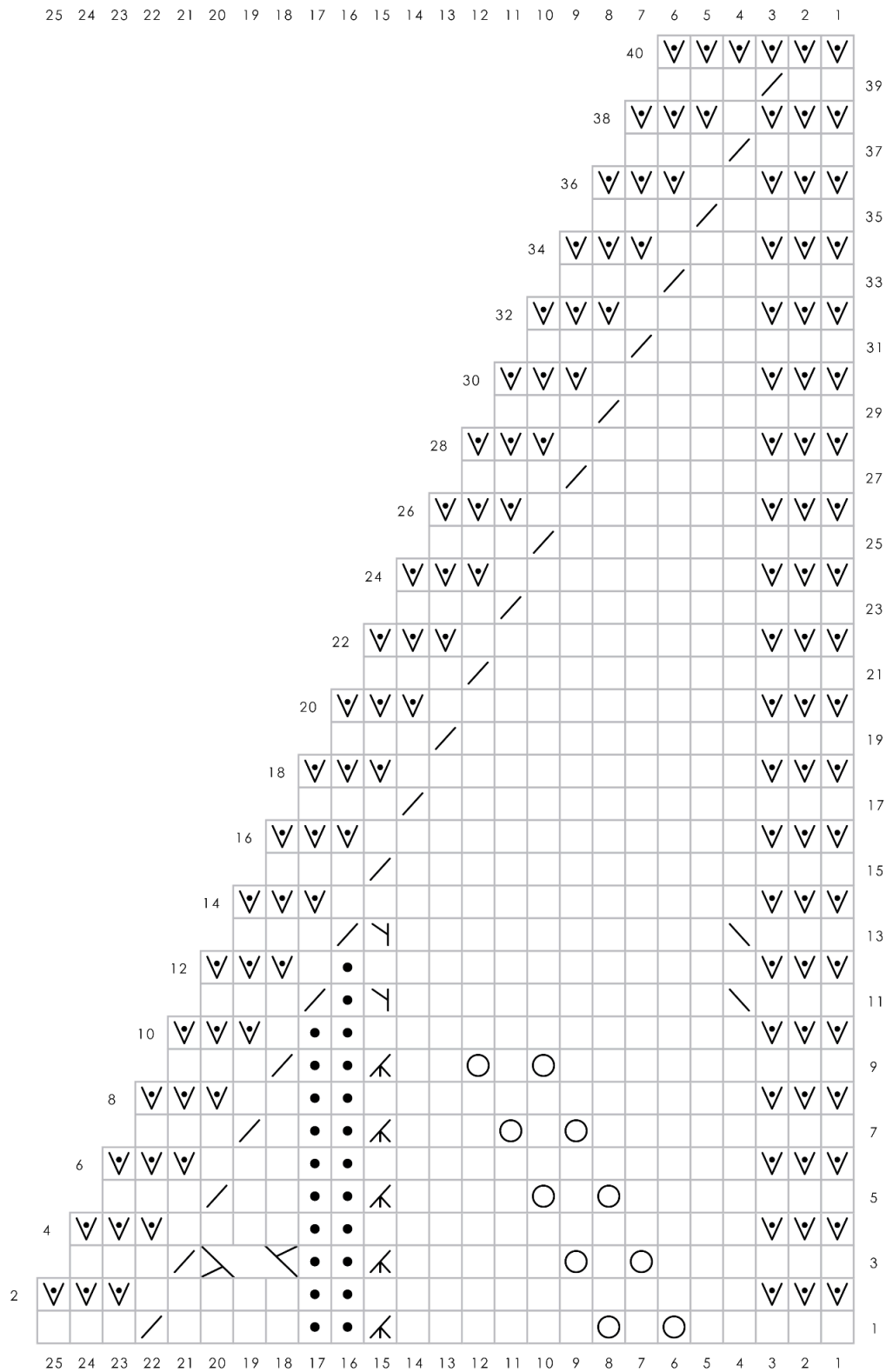


Pattern repeat



Work these 2 sts in patt until the final repeat

Chart D



WRITTEN INSTRUCTIONS FOR CHARTS

CHART A

Row 1 (RS): K7.

Row 2 (WS): Sl3 wyif, p1, sl3 wyif.

Row 3 (RS): K4, M1L, k3. 8 sts

Rows 4, 6, 8, 10, 12, 14, 16, 18, 20, 22, 24 (WS): Sl3 wyif, p to last 3 sts, sl3 wyif.

Rows 5, 7, 9, 11, 13, 15, 17, 19: K to last 3 sts, M1L, k3. 1 st inc

Row 21: K3, k3togtbl, k6, yo, k1, yo, M1L, k3. 17 sts

Row 23: K3, k3togtbl, k5, yo, k1, yo, k2, M1L, k3. 18 sts

Row 25: K3, k3togtbl, k4, yo, k1, yo, k4, M1L, k3. 19 sts

Row 26 (WS): Sl3 wyif, k1, p12, sl3 wyif.

Row 27: K3, k3togtbl, k3, yo, k1, yo, k5, p1, M1L, k3. 20 sts

Rows 28, 30, 32, 34, 36, 38 (WS): Sl3 wyif, work sts as they appear to last 3 sts, sl3 wyif.

Row 29: K3, k3togtbl, k2, yo, k1, yo, k6, p2, M1L, k3. 21 sts

Row 31: K3, M1R, k10, k2tog, p2, k1, M1L, k3. 22 sts

Row 33: K3, M1R, k10, k2tog, p2, k2, M1L, k3. 23 sts

Row 35: K3, M1R, k10, k2tog, p2, 2/1 LC, M1L, k3. 24 sts

Row 37: K3, M1R, k10, k2tog, p2, k4, M1L, k3. 25 sts

Row 39: K3, M1R, k10, k2tog, p2, 2/2 LC, p1, M1L, k3. 26 sts

Row 40 (WS): Sl3 wyif, k2, p4, k2, p12, sl3 wyif.

CHART B

Row 1 (RS): K3, [k2, yo, k1, yo, k6, k3tog, p2, k4, p2] to last 3 sts, M1L, k3. 1 st inc

Rows 2, 4, 6, 8, 10, 12, 14, 16, 18, 20, 22, 24 (WS): Sl3 wyif, work sts as they appear to last 3 sts, sl3 wyif.

Row 3: K3, [k3, yo, k1, yo, k5, k3tog, p2, 2/2 LC, p2] to last 4 sts, k1, M1L, k3. 1 st inc

Row 5: K3, [k4, yo, k1, yo, k4, k3tog, p2, k4, p2] to last 5 sts, k2, M1L, k3. 1 st inc

Row 7: K3, [k5, yo, k1, yo, k3, k3tog, p2, 2/2 LC, p2] to last 6 sts, k3, M1L, k3. 1 st inc

Row 9: K3, [k6, yo, k1, yo, k2, k3tog, p2, k4, p2] to last 7 sts, k4, M1L, k3. 1 st inc

Row 11: K3, [ssk, k10, M1L, p2, 2/2 LC, p2] to last 8 sts, k5, M1L, k3. 1 st inc

Row 13: K3, [ssk, k10, M1L, p2, k4, p2] to last 9 sts, k6, M1L, k3. 1 st inc

Row 15: K3, [ssk, k10, M1L, p2, 2/2 LC, p2] to last 10 sts, k7, M1L, k3. 1 st inc

Row 17: K3, [ssk, k10, M1L, p2, k4, p2] to last 11 sts, k8, M1L, k3. 1 st inc

Row 19: K3, [ssk, k10, M1L, p2, 2/2 LC, p2] to last 12 sts, k9, M1L, k3. 1 st inc

Row 21: K3, [k3togtbl, k6, yo, k1, yo, k2, p2, k4, p2] to last 13 sts, k3togtbl, k6, yo, k1, yo, M1L, k3. 1 st inc

Row 23: K3, [k3togtbl, k5, yo, k1, yo, k3, p2, 2/2 LC, p2] to last 14 sts, k3togtbl, k5, yo, k1, yo, k2, M1L, k3. 1 st inc

Row 25: K3, [k3togtbl, k4, yo, k1, yo, (k4, p2) twice] to last 15 sts, k3togtbl, k4, yo, k1, yo, k4, M1L, k3. 1 st inc

Row 26 (WS): Sl3 wyif, k1, p12, k2, p4, k2, p12, Sl3 wyif

Row 27: K3, [k3togtbl, k3, yo, k1, yo, k5, p2, 2/2 LC, p2] to last 16 sts, k3togtbl, k3, yo, k1, yo, k5, p1, M1L, k3. *1 st inc*

Rows 28, 30, 32, 34, 36, 38 (WS): Sl3 wyif, work sts as they appear to last 3 sts, sl3 wyif.

Row 29: K3, [k3togtbl, k2, yo, k1, yo, k6, p2, k4, p2] to last 17 sts, k3togtbl, k2, yo, k1, yo, k6, p2, M1L, k3. *1 st inc*

Row 31: K3, [M1R, k10, k2tog, p2, 2/2 LC, p2] to last 18 sts, M1R, k10, k2tog, p2, k1, M1L, k3. *1 st inc*

Row 33: K3, [M1R, k10, k2tog, p2, k4, p2] to last 19 sts, M1R, k10, k2tog, p2, k2, M1L, k3. *1 st inc*

Row 35: K3, [M1R, k10, k2tog, p2, 2/2 LC, p2] to last 20 sts, M1R, k10, k2tog, p2, 2/1 LC, M1L, k3. *1 st inc*

Row 37: K3, [M1R, k10, k2tog, p2, k4, p2] to last 21 sts M1R, k10, k2tog, p2, k4, M1L, k3. *1 st inc*

Row 39: K3, [M1R, k10, k2tog, p2, 2/2 LC, p2] to last 22 sts, M1R, k10, k2tog, p2, 2/2 LC, p1, M1L, k3. *1 st inc*

Row 40 (WS): Sl3 wyif, [k2, p4, k2, p12] to last 3 sts, sl3 wyif.

CHART C

Row 1 (RS): K3, [k2, yo, k1, yo, k6, k3tog, p2, k4, p2] to last 23 sts, k2, yo, k1, yo, k6, k3tog, p2, k4, k2tog, k3. *1 st dec*

Row 2 and all following WS rows (WS): Sl3 wyif, work sts as they appear to last 3 sts, sl3 wyif.

Row 3: K3, [k3, yo, k1, yo, k5, k3tog, p2, 2/2 LC, p2] to last 22 sts, k3, yo, k1, yo, k5, k3tog, p2, 2/1 LC, k2tog, k3. *1 st dec*

Row 5: K3, [k4, yo, k1, yo, k4, k3tog, p2, k4, p2] to last 21 sts, k4, yo, k1, yo, k4, k3tog, p2, k2, k2tog, k3. *1 st dec*

Row 7: K3, [k5, yo, k1, yo, k3, k3tog, p2, 2/2 LC, p2] to last 20 sts, k5, yo, k1, yo, k3, k3tog, p2, k1, k2tog, k3. *1 st dec*

Row 9: K3, [k6, yo, k1, yo, k2, k3tog, p2, k4, p2] to last 19 sts, k6, yo, k1, yo, k2, k3tog, p2, k2tog, k3. *1 st dec*

Row 11: K3, [ssk, k10, M1L, p2, 2/2 LC, p2] to last 18 sts, ssk, k10, M1L, p1, k2tog, k3. *1 st dec*

Row 13: K3, [ssk, k10, M1L, p2, k4, p2] to last 17 sts, ssk, k10, M1L, k2tog, k3. *1 st dec*

Row 15: K3, [ssk, k10, M1L, p2, 2/2 LC, p2] to last 16 sts, k11, k2tog, k3. *1 st dec*

Row 17: K3, [ssk, k10, M1L, p2, k4, p2] to last 15 sts, k10, k2tog, k3. *1 st dec*

Row 19: K3, [ssk, k10, M1L, p2, 2/2 LC, p2] to last 14 sts, k9, k2tog, k3. *1 st dec*

Row 21: K3, [k3togtbl, k6, yo, k1, yo, k2, p2, k4, p2] to last 13 sts, k8, k2tog, k3. *1 st dec*

Row 23: K3, [k3togtbl, k5, yo, k1, yo, k3, p2, 2/2 LC, p2] to last 12 sts, k7, k2tog, k3. *1 st dec*

Row 25: K3, [k3togtbl, k4, yo, k1, yo, [k4, p2] x 2] to last 11 sts, k6, k2tog, k3. *1 st dec*

Row 27: K3, [k3togtbl, k3, yo, k1, yo, k5, p2, 2/2 LC, p2] to last 10 sts, k5, k2tog, k3. *1 st dec*

Row 29: K3, [k3togtbl, k2, yo, k1, yo, k6, p2, k4, p2] to last 9 sts, k4, k2tog, k3. *1 st dec*

Row 31: K3, [M1R, k10, k2tog, p2, 2/2 LC, p2] to last 8 sts, k3, k2tog, k3. *1 st dec*

Row 33: K3, [M1R, k10, k2tog, p2, k4, p2] to last 7 sts, k2, k2tog, k3. *1 st dec*

Row 35: K3, [M1R, k10, k2tog, p2, 2/2 LC, p2] to last 6 sts, k1, k2tog, k3. *1 st dec*

Row 37: K3, [M1R, k10, k2tog, p2, k4, p2] to last 5 sts, k2tog, k3. *1 st dec*

Row 39 (RS): K3, [M1R, k10, k2tog, p2, 2/2 LC, p2] to last 3 sts, k3. *1 st dec*

Row 40 (WS): Sl3 wyif, [p1, k1, p4, k2, p12] to last 3 sts, sl3 wyif.

On final rep of Chart C, work Rows 39-40 as follows:

Row 39 (RS): K3, M1R, k10, k2tog, p2, 2/2 LC, p1, k2tog, k3. *1 st dec*

Row 40 (WS): Sl3 wyif, p1, k1, p4, k2, p12, sl3 wyif.

CHART D

Row 1 (RS): K5, yo, k1, yo, k6, k3tog, p2, k4, k2tog, k3. *25 sts*

Row 2 and all WS following rows (WS): Sl3 wyif, work sts as they appear to last 3 sts, sl3 wyif.

Row 3: K6, yo, k1, yo, k5, k3tog, p2, 2/1 LC, k2tog, k3. *24 sts*

Row 5: K7, yo, k1, yo, k4, k3tog, p2, k2, k2tog, k3. *23 sts*

Row 7: K8, yo, k1, yo, k3, k3tog, p2, k1, k2tog, k3. *22 sts*

Row 9: K9, yo, k1, yo, k2, k3tog, p2, k2tog, k3. *21 sts*

Row 11: K3, ssk, k10, M1L, p1, k2tog, k3. *20 sts*

Row 13: K3, ssk, k10, M1L, k2tog, k3. *19 sts*

Rows 15, 17, 19, 21, 23, 25, 27, 29, 31, 33, 35, 37, 39: K to last 5 sts, k2tog, k3. *1 st dec*

Row 40 (WS): Sl6 wyif. *6 sts*