

pompom x  hobbii



KNITTING PATTERN

# Pressed Flowers Kerchief

Mosaic Bandana

**Design: Amy Christoffers** | Garland, Autumn 2024

# pompom x hobbii

## MATERIALS

**Hobbii x Pom Pom Garland**

**Yarn A:** Sylvie; 1 ball

**Yarn B:** Zinnia; 1 ball

4mm / US 6 circular or straight needles  
Always use a needle size that will result in the correct gauge after blocking.

Tapestry needle

## YARN QUALITY

 **Garland**, Hobbii x Pom Pom

Worsted weight

70% Cotton, 30% Alpaca

105m / 114yd per 50 g

## GAUGE

24 sts & 32 rows = 10cm / 4" over Mosaic stitch on 4mm needles, after blocking

## SIZE

One size

## MEASUREMENTS

30" / 76cm long x 9" / 23cm deep at widest point

## PATTERN INFORMATION

The Pressed Flowers Kerchief is knit side to side, increasing every other row for the first half and decreasing every other row for the second half. It is worked in an all-over mosaic stitch with a motif border.

It can be made any size by adding or subtracting repeats, to make the most of yardage weigh the MC before you begin and work the increase repeat until nearly ½ the MC has been used up, the CC will use approximately 10% less yardage/meterage than the MC.

## HASHTAGS FOR SOCIAL MEDIA

#PressedFlowersKerchief

#PomPomxHobbiiGarland

#PomPomXHobbii

## BUY THE YARN HERE

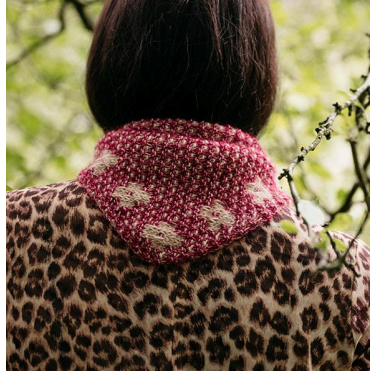
<https://shop.hobbii.com/pressed-flowers-kerchief-mosaic-bandana>

## QUESTIONS

If you have any questions regarding this pattern, please feel free to email us at [support@hobbii.com](mailto:support@hobbii.com). Please make sure to include the pattern's name and number.

Happy Crafting!

## Pattern



### ABBREVIATIONS

**Dec:** decrease/d/ing

**Inc:** increase/d/ing

**K:** knit

**M1:** make 1

**Rep:** repeat

**RS:** right side of work

**P:** purl

**Sl:** slip

**Ssk:** Slip 2 stitches knitwise one at a time, knit them together through back loop

**St(s):** stitch(es)

**Wyib:** with yarn in back of work

**Wyif:** with yarn in front of work

**WS:** wrong side of work

## PATTERN

All odd rows are RS, all even rows are WS.

The yarn to be used for each row is indicated in the row label, e.g. "Row 1 (WS, A)" is a WS row worked with yarn A.

With Yarn A, cast on 4 stitches.

Knit 1 row.

**Set-up row 1 (RS, B):** K1, sl1 wyib, m1, sl1 wyib, k1. *1 st inc*

**Set-up row 2 (B):** K1, [sl1 wyif, k1] to end.

**Set-up row 3 (A):** K2, m1, knit to end. *1 st inc*

**Set-up row 4 (A):** K to end.

**Set-up row 5 (B):** K1, sl1 wyib, m1, [sl1 wyib, k1] to end. *1 st inc*

**Set-up row 6 (B):** K1, [sl1 wyif, k1] to end.

Rep set-up rows 3-6 once more, then rep set-up rows 3-4 once more. *10 sts*

## **Increase Section – Chart A**

Work Rows 1-16 from Chart A or written directions below.

**Row 1 (RS, B)(inc):** K1, sl1 wyib, m1, sl1 wyib, k3, [sl1 wyib, k1] to end. *1 st inc*

**Row 2 (WS, B):** K1, [sl1 wyif, k1] to last 7 sts, p3, [sl1 wyif, k1] twice.

**Row 3 (A)(inc):** K2, m1, k2, sl3 wyib, k to end. *1 st inc*

**Row 4 (A):** K to last 8 sts, sl3 wyif, k5.

**Row 5 (B)(inc):** K1, sl1 wyib, m1, sl1 wyib, k7, [sl1 wyib, k1] to end. *1 st inc*

**Row 6 (B):** K1, [sl1 wyif, k1] to last 11 sts, p7, [sl1 wyif, k1] twice.

**Row 7 (A)(inc):** K2, m1, k2, sl3 wyib, k1, sl3 wyib, k to end. *1 st inc*

**Row 8 (A):** K to last 12 sts, sl3 wyif, k1, sl3 wyif, k5.

**Row 9 (B)(inc):** K1, sl1 wyib, m1, sl1 wyib, k1, sl1 wyib, k7, [sl1 wyib, k1] to end. *1 st inc*

**Row 10 (B):** K1, [sl1 wyif, k1] to last 13 sts, p7, [sl1 wyif, k1] to end.

**Row 11 (A)(inc):** K2, m1, k6, sl3 wyib, k to end. *1 st inc*

**Row 12 (A):** K to last 12 sts, sl3 wyif, k9.

**Row 13 (B)(inc):** K1, sl1 wyib, m1, sl1 wyib, [k1, sl1 wyib] 3 times, k3, [sl1 wyib, k1] to end. *1 st inc*

**Row 14 (B):** K1, [sl1 wyif, k1] to last 13 sts, p3, [sl1 wyif, k1] to end.

**Row 15 (A)(inc):** K2, m1, k to end. *1 st inc*

**Row 16 (A):** K to end.

Rep rows 1-16 a further 5 times. *58 sts*

## **Transition – Chart B**

Work Rows 1-16 from Chart B or written directions below.

**Row 1 (RS, B)(inc):** K1, sl1 wyib, m1, sl1 wyib, k3, [sl1 wyib, k1] to end. 59 sts

**Row 2 (WS, B):** K1, [sl1 wyif, k1] to last 7 sts, p3, [sl1 wyif, k1] twice.

**Row 3 (A)(inc):** K2, m1, k2, sl3 wyib, k to end. 60 sts

**Row 4 (A):** K to last 8 sts, sl3 wyif, k5.

**Row 5 (B)(inc):** K1, sl1 wyib, m1, sl1 wyib, k7, [sl1 wyib, k1] to end. 61 sts

**Row 6 (B):** K1, [sl1 wyif, k1] to last 11 sts, p7, [sl1 wyif, k1] twice.

**Row 7 (A)(inc):** K2, m1, k2, sl3 wyib, k1, sl3 wyib, k to end. 62 sts

**Row 8 (A):** K to last 12 sts, sl3 wyif, k1, sl3 wyif, k5.

**Row 9 (B)(dec):** K1, sl1 wyib, ssk, sl1 wyib, k7, [sl1 wyib, k1] to end. 61 sts

**Row 10 (B):** K1, [sl1 wyif, k1] to last 11 sts, p7, [sl1 wyif, k1] to end.

**Row 11 (A)(dec):** K2, ssk, k2, sl3 wyib, k to end. 60 sts

**Row 12 (A):** K to last 8 sts, sl3 wyif, k5.

**Row 13 (B)(dec):** K1, sl1 wyib, ssk, sl1 wyib, k3, [sl1 wyib, k1] to end. 59 sts

**Row 14 (B):** K1, [sl1 wyif, k1] to last 7 sts, p3, [sl1 wyif, k1] to end.

**Row 15 (A)(dec):** K2, ssk, k to end. 58 sts

**Row 16 (A):** K to end.

## Decrease Section – Chart C

Work Rows 1-16 from Chart C or written directions below.

**Row 1 (B)(dec):** K1, sl1 wyib, ssk, [sl1 wyib, k1] three times, sl1 wyib, k3, [sl1 wyib, k1] to end. 1 st dec

**Row 2 (B):** K1, [sl1 wyif, k1] to last 13 sts, p3, [sl1 wyif, k1] to end.

**Row 3 (A)(dec):** K2, ssk, k6, sl3 wyib, k to end. 1 st dec

**Row 4 (A):** K to last 12 sts, sl3 wyif, k9.

**Row 5 (B)(dec):** K1, sl1 wyib, ssk, sl1 wyib, k1, sl1 wyib, k7, [sl1 wyib, k1] to the end. 1 st dec

**Row 6 (B):** K1, [sl1 wyif, k1] to last 13 sts, p7, [sl1 wyif, k1] to end.

**Row 7 (A)(dec):** K2, ssk, k2, sl3 wyib, k1, sl3 wyib, k to end. 1 st dec

**Row 8 (A):** K to last 12 sts, sl3 wyif, k1, sl3 wyif, k5.

**Row 9 (B)(dec):** K1, sl1 wyib, ssk, sl1 wyib, k7, [sl1 wyib, k1] to end. 1 st dec

**Row 10 (B):** K1, [sl1 wyif, k1] to last 11 sts, p7, [sl1 wyif, k1] to end.

**Row 11 (A)(dec):** K2, ssk, k2, sl3 wyib, k to end. 1 st dec

**Row 12 (A):** K to last 8 sts, sl3 wyif, k5.

**Row 13 (B)(dec):** K1, sl1 wyib, ssk, sl1 wyib, k3, [sl1 wyib, k1] to end. 1 st dec

**Row 14 (B):** K1, [sl1 wyif, k1] to last 7 sts, p3, [sl1 wyif, k1] to end.

**Row 15 (A)(dec):** K2, ssk, k to end, 1 st dec

**Row 16 (A):** K to end.

Rep rows 1-16 a further 5 times. 10 sts

## Final Section

**Row 1 (B)(dec):** K1, sl1 wyib, ssk, [sl1 wyib, k1] to end. *1 st dec*

**Row 2 (B):** [K1, sl1 wyif] to last st, k1.

**Row 3 (A)(dec):** K2, ssk, k to end. *1 st dec*

**Row 4 (A):** K to end.

Rep rows 1-4 twice more. *4 sts*

Break yarns, leaving a tail of Yarn A at least 20cm / 8" long for sewn cast off.

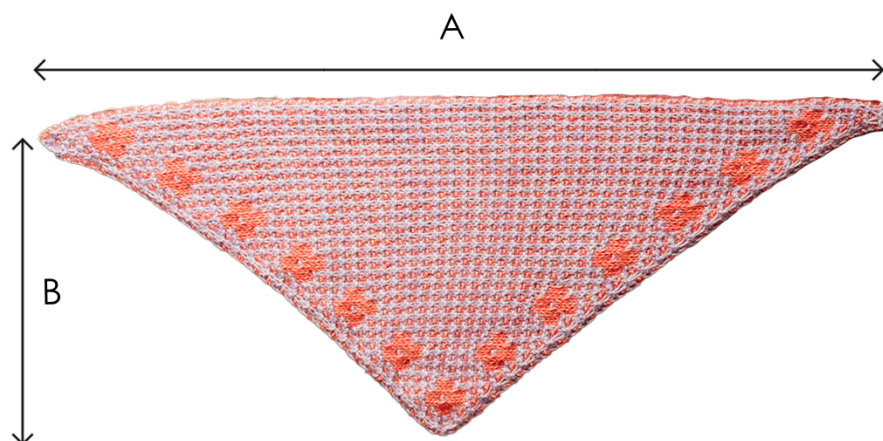
## FINISHING

With Yarn A tail threaded on a tapestry needle, \*run the tapestry needle through the first two stitches on the needle purl wise, pull the yarn through. Run the tapestry needle back through the first stitch knitwise, pull the yarn through and drop the first stitch off the needle. Rep from \* until all the stitches have been bound off.

Weave in ends. Block to desired measurements.

Enjoy!

## SCHEMATIC



A: 76cm / 30"

B: 23cm / 9"

**Amy Christoffers** (she/her) is a designer whose patterns use simple forms that celebrate classic knitting construction. Her work is inspired by traditional handwork, art, and nature. She is drawn to intuitive, easily memorised motifs and simple silhouettes. Her wish is to create useful and beautiful projects that are a joy to make and to wear. @savoryknitting

# pompom x hobbii

## Key

-  Yarn A
-  Yarn B
-  RS: knit  
WS: purl
-  RS: purl  
WS: knit
-  RS: slip  
WS: slip purlwise with yarn in front
-  RS: m1  
WS: m1 purlwise
-  RS: ssk  
WS: ssp
-  Pattern repeat
-  Grey no stitch

## Chart A

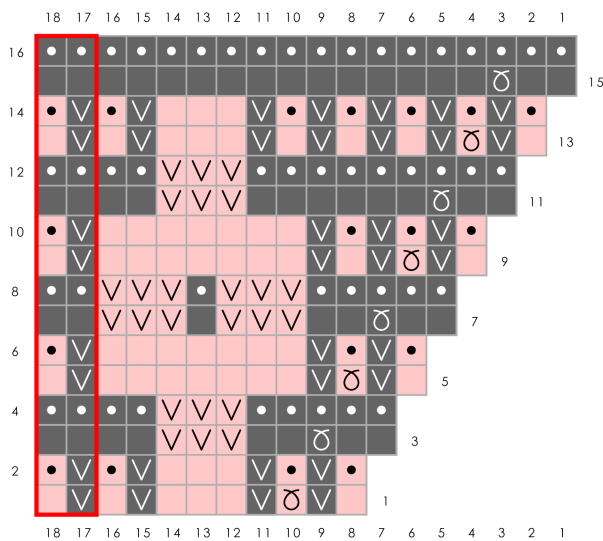


Chart B

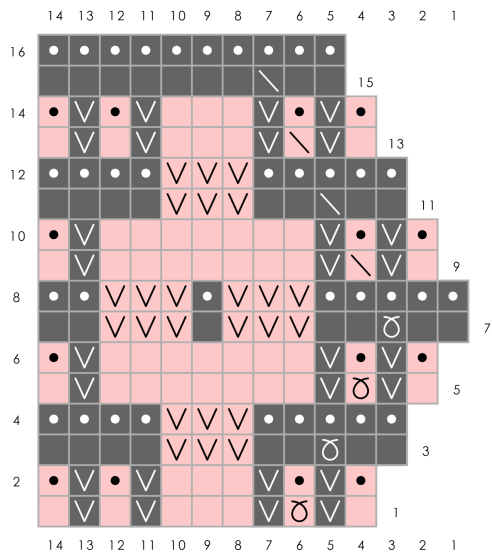


Chart C

