



CROCHET PATTERN

# Grisaille

Triangular Lace Shawl

**Design: Ana D.** | Summer 2024

## Materials

**Hobbii** Unicorn Solid

**Shade:** Mustard (20); 3 skeins

3.5mm / US E crochet hook

Always use a hook size that will result in the correct gauge after blocking.

## Yarn Quality

 **Unicorn Solid**, Hobbii

Fingering, Sock

75% Wool, 25% Polyamide

100 g (3.5 oz) = 400 m (437 yds)

## Gauge

21 sts and 9 rows = 10cm / 4" square in patt, after blocking

## Hashtags for Social Media

#GrisailleShawl #PomPomXHobbii

#PomPomXHobbiiSummer2024

## Size

One size

## Measurements

**Finished Measurements:** 168cm / 66" wingspan, 79cm / 31" deep at centre point

## Pattern Information

Grisaille is worked in rows from the top down in an all-over reversible leaf pattern. Shawl is worked as a half square, with a column of shell motifs at the center back. Picots are worked along the bottom edge.

## Buy the Yarn Here

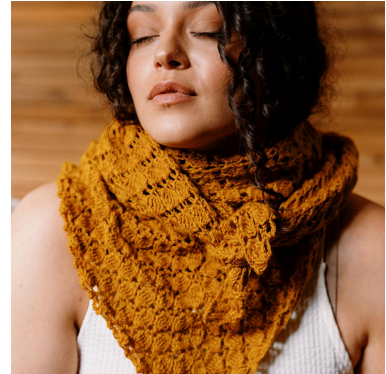
<https://shop.hobbii.com/grisaille-triangular-lace-shawl>

## QUESTIONS

If you have any questions regarding this pattern, please feel free to email us at **support@hobbii.com**. Please make sure to include the pattern's name and number.

Happy Crafting!

## Pattern



US crochet terminology used throughout.

### ABBREVIATIONS

**ch:** chain  
**ch-sp:** chain space  
**dc:** double crochet  
**sk:** skip  
**st(s):** stitch(es)  
**beg:** beginning  
**sc:** single crochet  
**rep:** repeat  
**RS:** right side  
**WS:** wrong side

### Stitch Glossary

**FPdc (front post double crochet):** Yarn over, insert hook from front to back around st, yarn over and draw up a loop, (yarn over and draw through 2 loops) twice.

**BPdc (back post double crochet):** Yarn over, insert hook from back to front around st, yarn over and draw up a loop, (yarn over and draw through 2 loops) twice.

**Fpdc5tog (front post double crochet 5 together):** [Yarn over, insert the hook from front towards back and draw up a loop around indicated st, yarn over and draw through 2 loops] 5 times, yarn over and draw through all 6 loops on hook.

**Shell:** [(dc, ch1) twice, dc] into indicated st.

**Picot:** Ch3, insert hook into the centre of the base stitch, yarn over and draw the yarn through the stitch and through the loop on the hook.

### Leaves Pattern

**Row 1:** Ch25 (3 ch counts as 1st dc), [5dc, ch1, sk1, dc, ch1, sk1] twice, 6dc.



**Row 2:** Ch4, [FPdc5tog over 5dc, ch1, 5dc in next dc, ch1] twice, FPdc5tog over next 5dc, ch1, dc in beg ch3.

**Row 3:** Ch4, [dc in FPdc5tog, ch1, BPdc around each of next 5dc, ch1] twice, dc in FPdc5tog, ch1, dc in beg ch3.

**Row 4:** Ch3, [5dc in next dc, ch1, FPdc5tog over 5dc, ch1] twice, 5dc in next dc, dc in last dc.

**Row 5:** Ch3, [BPdc around each of next 5dc, ch1, dc in FPdc5tog, ch1] twice, 6dc.

**Row 6-9:** Rep rows 2-5.

Rep rows 1-9 for pattern.

## PATTERN BEGINS

### SHAWL BODY

Begin with magic ring.

**Row 1 (WS):** Into magic ring, ch5 (counts as 1dc + ch2), dc, [ch2, dc] twice, turn. *4dc, 3 ch-2 sps*

**Row 2 (RS):** Ch4 (counts as 1dc + ch1 throughout), 5dc in ch-2 sp, [ch1, 5dc in next ch-2 sp] twice, ch1, dc in 3<sup>rd</sup> ch of beg ch-4. *2dc, 3 groups of 5dc, 4 ch-1 sps*

**Row 3:** Ch4, BPdc around each of next 5dc, [ch1, dc in next ch-1 sp, ch1, BPdc around each of next 5dc] twice, ch1, dc in 3<sup>rd</sup> ch of beg ch-4. *4dc, 3 groups of 5BPdc, 6 ch-1 sps*

**Row 4:** Ch4, 5dc in first ch-1 sp, ch1, FPdc5tog over next 5dc, [ch1, 5dc in next dc, ch1, FPdc5tog over next 5dc] twice, ch1, 5dc in last ch-1 sp, ch1, dc in 3<sup>rd</sup> ch of beg ch-4. *2dc, 4 groups of 5dc, 3 fpdc5tog, 8 ch-1 sps*

Place a stitch marker into the second FPdc5tog to mark centre st.

**Row 5:** Ch4, \*BPdc around each of next 5dc, ch1, dc in next FPdc5tog, ch1, BPdc around each of next 5dc, ch1\*\*, work Shell into centre FPdc5tog placing a marker into 2<sup>nd</sup> dc of Shell, ch1, rep from \* to \*\* to end, dc in 3<sup>rd</sup> ch of beg ch-4. *4dc, 4 groups of 5bpdc, 8 ch-1 sps, 1 Shell*

**Row 6:** Ch4, 5dc in first ch-1 sp, \*ch1, FPdc5tog over next 5dc, ch1, 5dc in next dc, ch1, FPdc5tog over next 5dc\*\*, [ch1, 5dc in next dc] 3 times over centre Shell, place a stitch marker in centre 5dc group, rep from \* to \*\*, ch1, 5dc in last ch-1 sp, ch1, dc in 3<sup>rd</sup> ch of beg ch-4. *2dc, 7 groups of 5dc, 4 FPdc5tog, 12 ch-1 sps*

**Row 7:** Ch4, BPdc around each of next 5dc, ch1, \*[dc in next FPdc5tog, ch1, BPdc around each of next 5dc, ch1]\*\* to marked centre st, [dc in next ch-1 space, ch1, BPdc around each of next 5dc, ch1] twice, rep from \* to \*\* to end, dc in 3<sup>rd</sup> ch of beg ch-4. *8dc, 7 groups of 5BPdc, 14 ch-1 sps*

**Row 8:** Ch4, 5dc in first ch-1 sp, ch1, FPdc5tog over next 5BPdc, [ch1, 5dc in next dc, ch1, FPdc5tog over next 5BPdc] to end, ch1, 5dc in last ch-1 sp, ch1, dc in 3<sup>rd</sup> ch of beg ch-4. *2dc, 8 groups of 5dc, 7 FPdc5tog, 16 ch-1 sps*

Place a stitch marker in 4<sup>th</sup> FPdc5tog to mark centre st. Move st marker up to centre on each subsequent pattern repeat.

**Row 9:** Ch4, BPdc around each of next 5dc, ch1, \*dc in next FPdc5tog, ch1, BPdc around each of next 5dc, ch1\*\*; rep from \* to marked centre st, work Shell into centre FPdc5tog moving centre marker, ch1, BPdc around each of next 5dc, ch1, rep from \* to \*\* to end, dc in 3<sup>rd</sup> ch of beg ch-4. *8dc, 8 groups of 5BPdc, 16 ch-1 sps, 1 Shell*

**Row 10:** Ch4, 5dc in first ch-1 sp, ch1, \*FPdc5tog over next 5dc, ch1, 5dc in next dc, ch1; rep from \* to marked centre st, 5dc in marked st, ch1, \*\*5dc in next dc, ch1, FPdc5tog over next 5dc, ch1; rep from \*\* to end, 5dc in last ch-1sp, ch1, dc in 3<sup>rd</sup> ch of beg ch-4. *2dc, 11 groups of 5dc, 8 fpdc5tog, 20 ch-1 sps*

Rep rows 7-10 a further 13 times.

**Next row:** Rep row 7. *2dc, 63 groups of 5BPdc, 64 ch-1 sps*

## EDGING

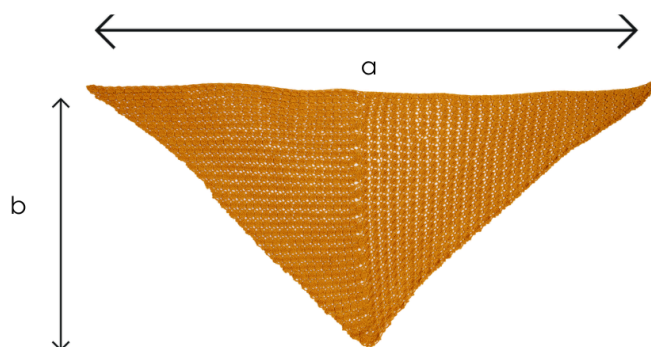
**Row 1:** Ch1, sc at base of ch1, ch3, FPdc5tog over next 5bpdc, work Picot, \*ch4, (sc, Picot) in next dc, ch4, FPdc5tog over next 5BPdc, work picot on top of just made FPdc5tog; rep from \* to end, ch3, sc in 3<sup>rd</sup> ch of beg ch. Fasten off.

## FINISHING

Weave in ends, block to measurements.

**Enjoy!**

## Schematic



- a. 168cm / 66" wingspan
- b. 79cm / 31" deep at centre point

**Ana D.** (she/her) is an independent crochet designer with 10 years of experience. Her designs give a fresh and modern touch to crochet. They are simple yet stylish, a balanced combination of traditional stitches and modern constructions and textures. Ana loves to experiment with forms, different stitches and yarn thicknesses. [ana-d.com](http://ana-d.com) / [@by.ana.d](https://www.instagram.com/by.ana.d)