

Pattern

ALPELINO

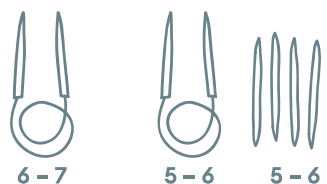
Oversized Vest with Lace Pattern

Difficulty level:



Needles:

Lace Pattern: Ribbing:



Quality:

Alpelino from Gründl
80 % polyacrylic,
20 % alpaca
100 g / 200 m



4 (5) x

Size:

EU women's size 36/38 [40/42]

Usage:

approx. 400 [500] g in col. 04
(coral melange)

Tension:

Lace Pattern: 18 sts and 22 rows to 10 cm meas

Ribbing Pattern:

19 sts and 23 rows/rnds to 10 cm meas slightly stretched

Stitch Pattern:

Lace Pattern: (amount of sts multiple of 26 + 1 st + 2 selvedge sts)

Work as shown in chart. Only the RS rows are shown. The numbers along the righthand side indicate the RS rows. Work the sts in the WS rows as they appear (k the knit sts and p the purl sts and purl the yos). Start with 1 selvedge st and the st in front of the patt rep, work the patt rep of 26 sts as needed and end with the 26 sts after the patt rep (Caution: only the last st at the end of rows 29 and 39 are worked differently) and 1 selvedge st. Work rows 1 - 40 cont. throughout.

Ribbing in rows:

(amount of sts multiple of 2 plus 1 st)

WS rows: 1 selvedge st, alt k1, p1 and end row with k1 and 1 selvedge st.

RS rows: work the sts between the selvedges as they appear.

Ribbing in rnds: (amount of sts multiple of 2) alt k1, p1 throughout.

Stockinette:

RS rows: knit

WS rows: purl

Garter stitch selvedge:

At beg of row k1 tbl and at end of each row sl1 p-wise wyif

Instructions: (changes for size 40/42 are shown in brackets)

Back:

Cast on 107 [113] M (including 2 selvedge sts) and starting with a WS row work 5 cm (= 11 rows) in ribbing patt. Then cont as follows: 1 selvedge st, 0 [3] stockinette sts, 105 sts in lace patt (= 1 st before the patt rep, 3 x 26 st patt rep, 26 sts after the patt rep), 0 [3] sts stockinette,

1 selvedge st. Work in established patt for 50 [52] cm (= 110 [114] rows) then work the shoulder shaping. In every alt row cast off 4 sts 8 [6] times and 5 sts 0 [2] times. Then place the remaining 43 [45] sts for the back neck onto a holder.

Front:

Work as for back, with a deeper neckline opening starting at 53 [55] cm (= 116 [120] rows) from beg of lace patt place the centre 21 [23] sts onto a holder and work the sides AT THE SAME TIME along the neckline edge in every alt row cast off 4 sts once, 3 sts once, 2 sts once and 1 st two times.

Finishing:

Close all seams using the mattress stitch. To do so, place the edges to be joined together flat next to each other with the right sides facing. Use a blunt needle and alt sts between pieces inserting the needle under the horizontal bar between the selvedge st and the 2nd st and on the shoulder seams the sts directly below the cast-off edge, then into the corresponding bar on the other piece. Cont alt from side to side and after a few cm of work, tug the thread firmly to close the seam but be careful not to make the seam too tight. This insures an elastic seam. The selvedge sts or the cast off edge sts disappear to the inside and you will have a clean, almost invisible seam.

Close the shoulder seam. For the stand-up collar with right sides facing and using the dpns pick up along each of the neckline edges 12 sts each and place the sts from the holders onto the dpns (= 88 [92] sts total for the neckline). Work 8 cm (= 18 rnds) in ribbing in rnds then cast off all sts loosely in patt. Close the side seams leaving the upper 19 [20] cm for the armhole open. Using the dpns and right sides facing, pick up 64 [68] sts along each armhole. Work 3 cm (= 7 rnds) in ribbing in rnds then cast off all sts loosely in patt. Weave in ends.

Abbreviations:

alt = alternate(ing)
 approx. = approximate(ly)
 beg = begin(ning)
 col = colour(s)
 cont = continue (continuously)
 k = knit
 meas = measure(d)
 patt = pattern
 p = purl
 p-wise = purl wise
 psso = pass slipped stitch over prev knit st(s)
 rep = repeat
 rev = reverse
 rnd(s) = round(s)
 RS = right side
 skp = sl 1, k1, psso
 sl = slip
 st(s) = stitch(es)
 tbl = through back loop
 tog = together
 wyif = with yarn in front of work
 WS = wrong side
 yo(s) = yarn over (needle)/ yarn round needle

Schema (cm):

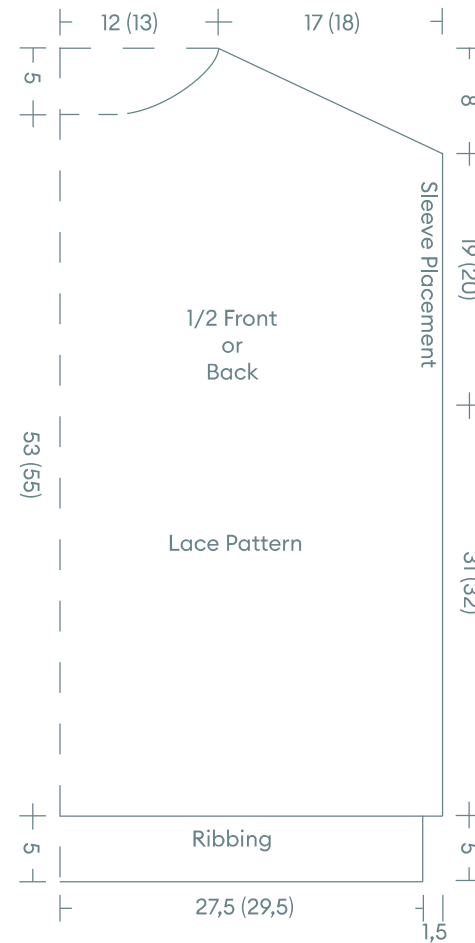
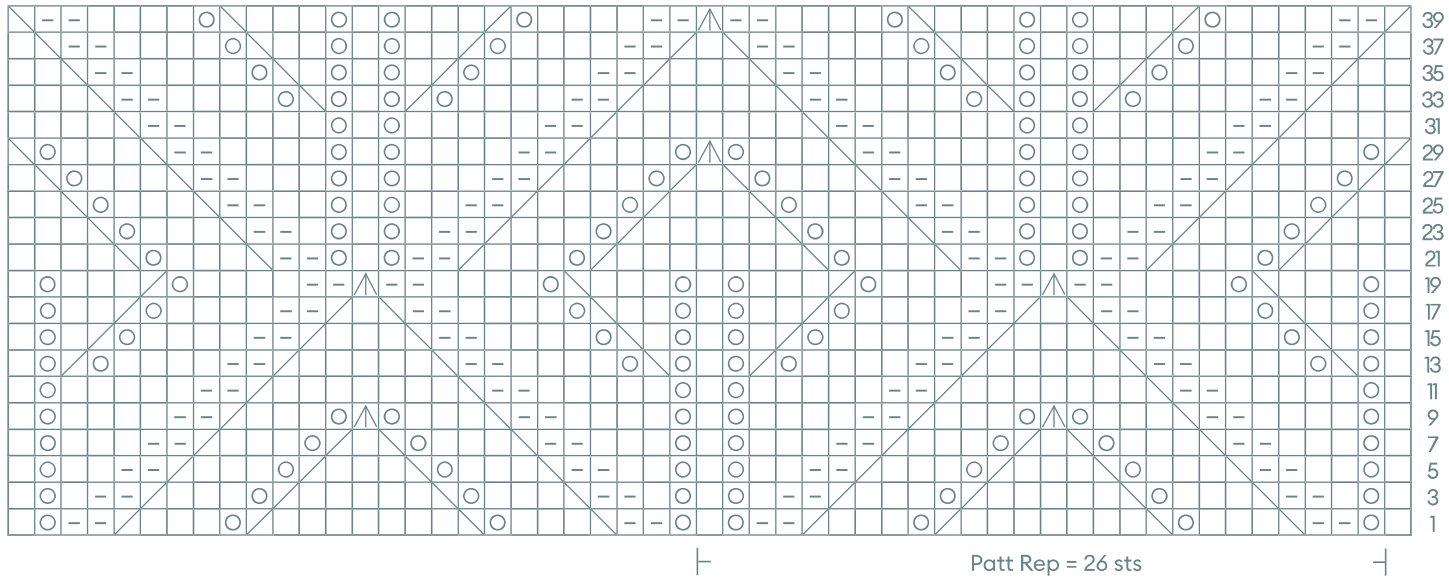


Chart:



- = k1
- ▢ = p1
- ▤ = skp
- ▥ = sk2p
- ▧ = k2tog
- ⊙ = 1 yo