

CROCHET PATTERN

# DRAGON TAIL BABY SACK

made with  
  
**Katia**

## SIZE:

6/18 months

## ABBREVIATIONS:

**X**= Single crochet    ● =Slip stitch

**V** = Increase: Make two stitches from one stitch

○= Chain stitch    **T** = Double crochet

## MATERIALS:

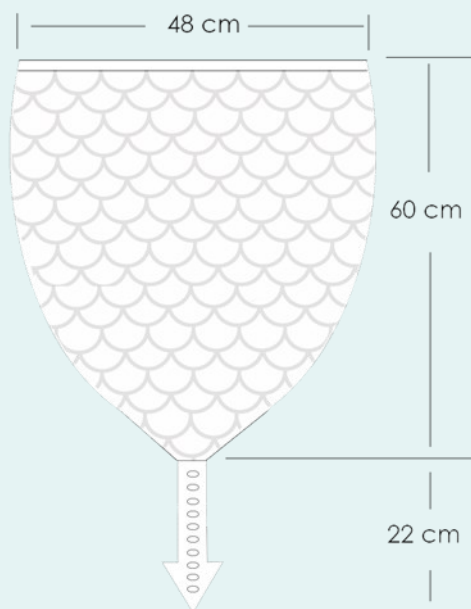
- 6 balls **Katia Azteca** (col. 7840)
- Size H8 (U.S.)/(5 mm) crochet hook
- Wool sewing needle
- Filling



## ARROWHEAD TAIL:

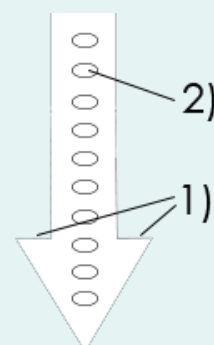
Row	Stitches to be worked	Total no. stitches
Start	Magic Ring with 4X	4
1	(X + V)* 2 times	6
2	(2X + V)* 2 times	8
3	(3X + V)* 2 times	10
4	(4X + V)* 2 times	12
5	(5X + V)* 2 times	14
6	(6X + V)* 2 times	16
7	(7X + V)* 2 times	18
8	(8X + V)* 2 times	20
9	(9X + V)* 2 times	22
10	(10X + V)* 2 times	24
11	(11X + V)* 2 times	26
12	(7X + skip 7X + 6X + skip 6X) Skip 2X from start of row + ● to join in the 3 <sup>rd</sup> st	11
13-31	X in each st	11
32	(X + V + 4X + V + 4X)	13
33	(2X + V + 3X + V + 2X + V + 2X + V) ● to join	17

Do not cut or close the work.



**1)** Fill then close by sewing the upper part of the arrowhead.

**2)** Work various stitches with the same yarn along the length of the tail.

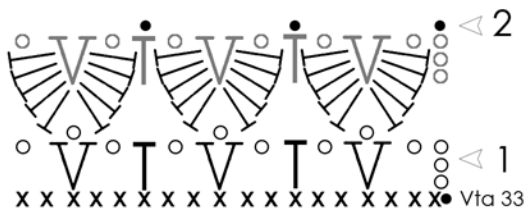


Continue working the baby sack, as indicated to follow.

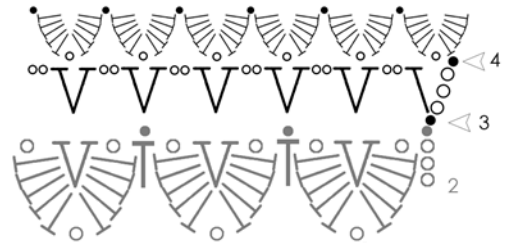
## BABY SACK:

Work in scale stitch or crocodile stitch, in circular. Work following the graphs.

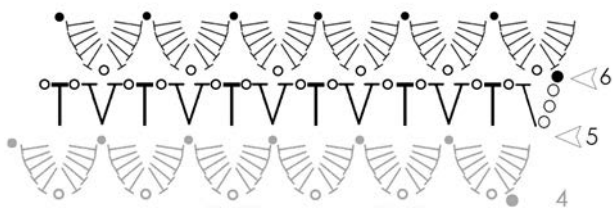
**1<sup>st</sup> row of scales:** (Rows 1 & 2 = 3 scales)



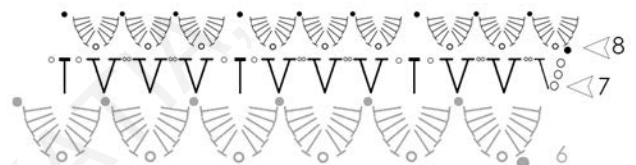
**2<sup>nd</sup> row of scales:** (Rows 3 & 4 = 6 scales)



**3<sup>rd</sup> row of scales:** (Rows 5 & 6 = 6 scales)



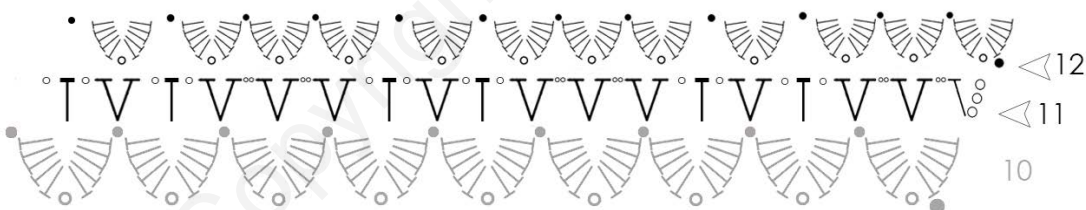
**4<sup>th</sup> row of scales:** (Rows 7 & 8 = 9 scales)



**5<sup>th</sup> row of scales:** (Rows 9 & 10 = 9 scales)

Work the same as 3<sup>rd</sup> row (Rows 5 & 6) along the whole length of each row

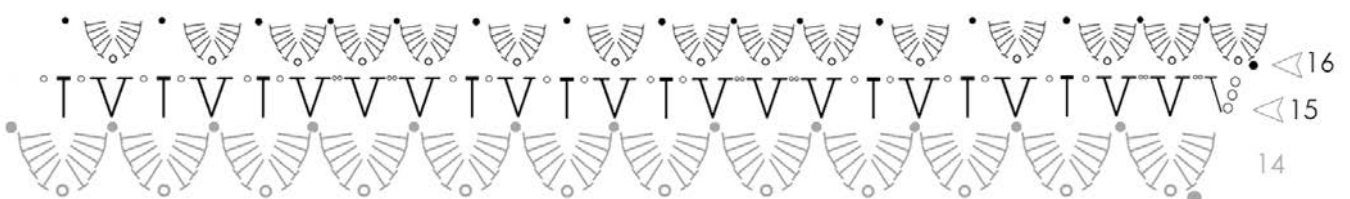
**6<sup>th</sup> row of scales:** (Rows 11 & 12 = 12 scales)



**7<sup>th</sup> row of scales:** (Rows 13 & 14 = 12 scales)

Work the same as 3<sup>rd</sup> row (Rows 5 & 6) along the whole length of each row

**8<sup>th</sup> row of scales:** (Rows 15 & 16 = 15 scales)

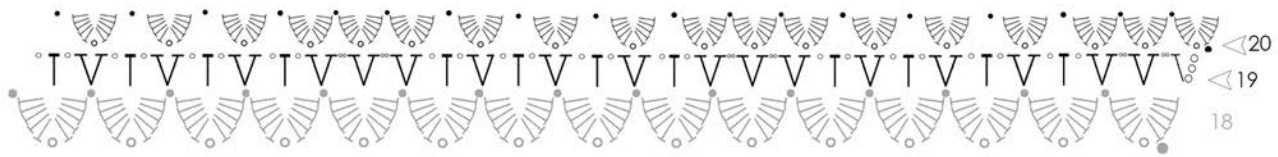




**9<sup>th</sup> row of scales:** (Rows 17 & 18 = 15 scales)

Work the same as 3<sup>rd</sup> row (Rows 5 & 6) along the whole length of each row

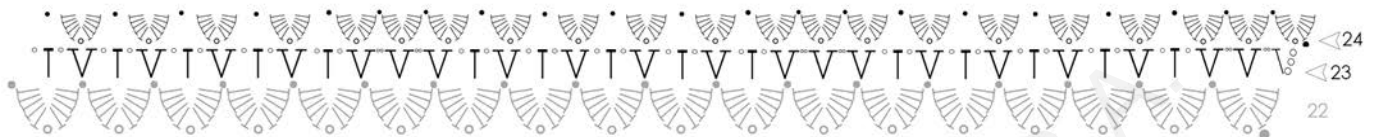
**10<sup>th</sup> row of scales:** (Rows 19 & 20 = 18 scales)



**11<sup>th</sup> row of scales:** (Rows 21 & 22 = 18 scales)

Work the same as 3<sup>rd</sup> row (Rows 5 & 6) along the whole length of each row

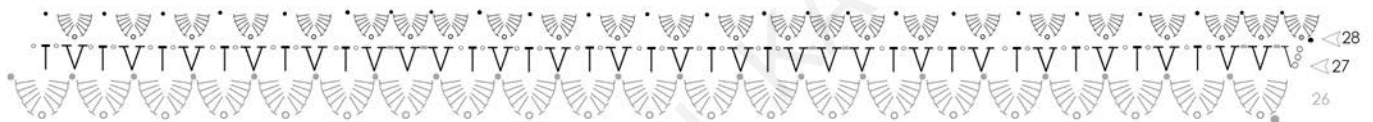
**12<sup>th</sup> row of scales:** (Rows 23 & 24 = 21 scales)



**13<sup>th</sup> row of scales:** (Rows 25 & 26 = 21 scales)

Work the same as 3<sup>rd</sup> row (Rows 5 & 6) along the whole length of each row

**14<sup>th</sup> row of scales:** (Rows 27 & 28 = 24 scales)



**15<sup>th</sup> – 30<sup>th</sup> row of scales:** (24 scales)

Work the same as 3<sup>rd</sup> row (Rows 5 & 6) along the whole length of each row

**Last row:**



• to join. Cut and cast off.

