



DALE[®]
GARN

HOUSE of YARN

ISLENDER CHILDREN'S JUMPER

DG 463-15 | OLDER



Dale Garn - a part of HOUSE of YARN

DG 463-15

ISLENDER CHILDREN'S JUMPER

DESIGN

House of Yarn

YARN

OLDER 100 % wool, 50 grams = approx. 95 metres

SIZES

2-4 (6) 8 (10) 12 years

NOTE! See GARMENT MEASUREMENTS to find the right size

GARMENT MEASUREMENTS

Chest measurements approx. 67 (71) 74 (82) 89 cm

Full length, measured mid-back, approx. 40 (44) 48 (52) 55 cm

Sleeve-length approx. 27 (32) 36 (38) 40 cm or desired length

YARN AMOUNTS

Colour 1 4 (5) 6 (7) 8 balls

Colour 2 2 (2) 3 (3) 3 balls

COLOURS

Colour 1 Mottled blue 426

Colour 2 White 400

SUGGESTED NEEDLE SIZES

4.5 mm and 5 mm long and short circular needles and DPNs

KNITTING TENSION

18 sts x 22 rounds on 5 mm needles = 10 x 10 cm

Check your knitting tension by working a swatch. Count the number of sts per 10 cm; if you have more sts than suggested, change to a larger needle size. If you have fewer sts, change to a smaller needle size.

FIND THE RIGHT SIZE

1. Measure a garment that fits you.
2. Compare the measurements with the pattern.
3. Choose your size from the chest measurements.
4. Body and sleeves can be worked longer or shorter as needed.

Pattern prepared by Ane Kydland Thomassen

ABBREVIATIONS

K = knit, P = purl, st. = stitch, y/o = yarn over,
DPN = double pointed needles

© House of Yarn AS

The copying and publication of materials and patterns, or their use for commercial purposes, is not allowed without prior agreement with House of Yarn AS.



Work the sleeves first.

SLEEVES

Cast on 32 (32) 36 (36) 40 sts with colour 1 on 4.5 mm needles.

Work rib in the round, (K2, P2) as follows: Work 4 rounds with colour 1, 2 rounds with colour 2, 1 round with colour 1, 2 rounds with colour 2, change to colour 1 and work until the sleeve measures 6 cm. Place a marker around the first and last st = marker-sts, which are always knitted using colour 1. Change to 5 mm needles, continue with stocking st and work the diagram. Count outwards from middle of sleeve to determine where the diagram should begin.

When the sleeve measures 7 cm, increase 1 st on each side of the marker-sts. Repeat the increases every 3 (3) 4.5 (4) 4 cm a total of 6 (7) 6 (7) 7 times = 44 (46) 48 (50) 54 sts.

Work until the sleeve measures 27 (32) 36 (38) 40 cm or to desired length. On the last round, cast off 8 sts under the sleeve (= marker sts + 3 sts on each side) = 36 (38) 40 (42) 46 sts. Leave the sts on the needle and work one more sleeve.

Measure 20 (23) 26 (29) 31 cm down the knitting direction from the last round and place a marker. This is a reference marker for where the colourwork diagram should begin on the body.

BODY

Cast on 120 (128) 136 (148) 160 sts with colour 1 on 4.5 mm needles. Work rib in the round (K2, P2) for 6 cm.

Place a marker in each side with 60 (64) 68 (74) 80 sts on both the front and back pieces.

Change to 5 mm needles, continue with stocking st and work the diagram. Begin at the arrow for your chosen size, after the marker on each side. *Use the reference marker on the sleeve to determine which row in the diagram to start with.* You can adjust this to start with the closest row in the diagram which is worked with just colour 1.

When the piece measures 26 (29) 32 (35) 37 cm, cast off 8 sts on each side for the armholes (= 4 sts on each side of each marker) = 52 (56) 60 (66) 72 sts on both the front and back pieces. Leave sts on needle.

YOKE

Place left sleeve, front piece, right sleeve and back piece on 5 mm needles = 176 (188) 200 (216) 236 sts. Place a marker around the first and last sts on both the front and back pieces = marker-sts, which are always purled in colour 1.

Continue in the round with stocking st and work the diagram on each piece as before.

On round 3, decrease for raglan as follows:

Before each marker: Work as far as 2 sts before each marker, slip 1 st knit-wise, slip the next st knit-wise, place the 2 sts back on the left needle and K 2 together tbl.

After each marker: K2 together.

Repeat the raglan decreases every 3rd round another 2 (2) 2 (2) 0 times, then every 2nd round 11 (12) 13 (14) 18 times.

Decrease with the colour which best fits the pattern.

At the same time, when you have decreased for raglan 9 (10) 11 (12) 14 times, cast off the middle 8 (8) 10 (10) 12 sts on the front piece for the neckline.

Continue back and forth with stocking st and continue casting off for the neckline at the beginning of each row on each side 3,2 sts, then 1 st until the raglan decreases are finished on the back piece.

NOTE! When decreasing for raglan from the wrong side, P2 together before each marker and P2 together tbl after each marker. Marker-sts are knitted.

NECK

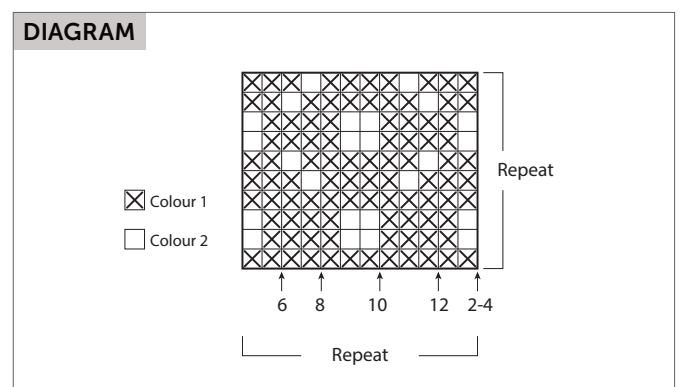
Work the sts from the yoke with colour 1 onto 4.5 mm needles, **at the same time** as you pick up 8-9 sts per 5 cm round the neckline = approx. 68 - 88 sts. St count should be divisible by 4. Work 12 cm rib in the round (K2, P2), then 2 rounds with colour 2, 1 round with colour 1, 2 rounds with colour 2, 4 rounds with colour 1.

Loosely cast off with K and P.

Fold the neck double to the right side.

ASSEMBLY

Sew the openings under the sleeves.



Do you need inspiration for your next knitting project? Check out the website houseofyarn.no