



DALE[®]
GARN

HOUSE of YARN

CLASSIC ICELANDER

DG 435-15B | NATURAL LANOLIN WOOL



Dale Garn - a part of **HOUSE of YARN**

DG 435-15

CLASSIC ICELANDER

DESIGN

House of Yarn

YARN

NATURAL LANOLIN WOOL 100% pure new wool,
50 grams = approx.100 metres

SIZES

XS (S) M (L) XL (XXL)

NOTE! See GARMENT MEASUREMENTS to find the right size

GARMENT MEASUREMENTS

Chest size approx. 87 (98) 109 (120) 131 (142) cm

Full length approx. 60 (64) 66 (70) 72 (74) cm

Sleeve-length women approx. 49 cm, or desired length

Sleeve-length men approx. 54 cm, or desired length

YARN AMOUNTS

Colour 1: 11 (12) 13 (14) 16 (17) balls

Colour 2: 4 (4) 4 (5) 5 (5) balls

COLOURS

Colour 1: Anthracite 1431

Colour 2: White 1438

SUGGESTED NEEDLE SIZE

3.5 mm and 4 mm long and short circular needles and DPNs

KNITTING TENSION

22 sts stocking st and pattern on 4 mm needles = 10 cm

28 rounds stocking st and pattern with 4 mm needles =
10 cm

Yarn alternatives: MERINO 22, LERKE

Check your knitting tension by working a swatch.

Count the number of sts per 10 cm; if you have more sts than suggested change to a larger needle size. If you have fewer sts, change to a smaller needle size.

FIND THE RIGHT SIZE

1. Measure a garment that fits you.
2. Compare the measurements with the pattern.
3. Choose your size from the chest measurements.
4. Body and sleeves can be worked longer or shorter as needed.

PATTERN PREPARED BY

Hrönn Jónsdóttir

ABBREVIATIONS

K = knit, P = purl, st. = stitch, r = row



STRIPE PATTERN

Work rib with K2, P2:

- 10 rounds with colour 1
- 3 rounds with colour 2
- 2 rounds with colour 1
- 3 rounds with colour 2
- 8 rounds with colour 1

BODY

Cast on 192 (216) 240 (264) 288 (312) sts with colour 1 and circular 3.5 mm needles. Work in the round with **stripe pattern**. Insert a marker in each side with 96 (108) 120 (132) 144 (156) sts on both the front and back pieces. Change to 4 mm needles and work pattern according to the diagram until the piece measures 37 (39) 42 (45) 47 (49) cm. On the last round cast off 14 sts for the armhole on each side (= 7 sts on each side of each marker) = 82 (94) 106 (118) 130 (142) sts on both the front and back pieces. Leave sts on needle and work the sleeves.

© House of Yarn AS

The copying and publication of materials and patterns, or their use for commercial purposes, is not allowed without prior agreement with House of Yarn AS.

Photo: Wenche Hoel-Knai @photowenche, Stylist: Jan Gunnar Svenson @stylesvenson



SLEEVES

Cast on 44 (48) 48 (52) 56 (60) sts with colour 1 and double pointed needles size 3.5 mm. Work in the round with **stripe pattern**. Insert a marker round the first and last st = marker-sts. Change to 4 mm needles and work pattern according to the diagram. Count out from the middle of the sleeve where the diagram should begin. When the sleeve measures 9 cm, increase 1 st on each side of the marker-sts. Repeat these increases every 2.5 (2) 2 (1.5) 1.5 (1.5) cm a total of 16 (18) 20 (22) 23 (23) times = 76 (84) 88 (96) 102 (106) sts. Work until the sleeve measures 49 cm (women) / 54 cm (men), or to your desired length. On the last round cast off 14 sts under the sleeve (= marker sts + 6 sts on each side) = 62 (70) 74 (82) 88 (92) sts.

YOKE

Place the left sleeve, front piece, right sleeve and back piece on 4 mm circular needles = 288 (328) 360 (400) 436 (468) sts. Insert a marker around the first and last sts on the front and back pieces = 4 marker sts. The marker sts are always purled with colour 1. Continue working the pattern according to the diagram on each piece as before. On round 2 decrease for raglan by knitting 2 twisted together before each marker-st and knitting 2 together after each marker-st. Decrease with the colour which fits best for the pattern. Repeat the raglan-decreases every 4th round 3 (1) 0 (0) 0 (0) more times, then every 2nd round 18 (23) 22 (21) 19 (17) times, then every round 0 (0) 8 (10) 20 (24) times. **At the same time**, when you have decreased 18 (21) 22 (23) 28 (30) times for raglan, cast off 14 (16) 18 (20) 24 (28) sts mid-front for the neck. Continue back and forth with stocking st and pattern (marker-sts knitted on wrong side) and continue casting off for the neck at the beginning of each row on each side 3,2 sts then 1 st until the raglan-decreases are finished on the back piece. **NOTE!** When decreasing for raglan on the wrong side, P2 together before each marker-st and P2 twisted together after each marker-st.

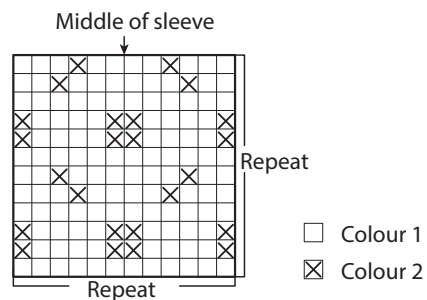
ASSEMBLY

Sew together under the sleeves.

NECK

Use 3.5 mm needles and colour 1. Work the stitches from the needle and knit up approx. 11 sts per 5 cm round the neckline. St-number must be divisible by 4. Work 7 cm rib in the round with K2, P2. Loosely cast off. Fold the rib double to the inside and sew down with loose stitches.

DIAGRAM



Do you need inspiration for your next knitting project? Check out the website houseofyarn.no