



DALE[®]
GARN

HOUSE of YARN

SIMRE JUMPER

DG 437-03 | LERKE



Dale Garn – a part of **HOUSE of YARN**

DG 437-03

SIMRE JUMPER

DESIGN

Ane Kydland Thomassen

YARN

LERKE 53 % merino wool, 47 % Egyptian cotton,
50 grams = approx. 115 metres

SIZES

2 (4) 6 (8) 10 (12) years

NOTE! See [MEASUREMENTS](#) to find the right size

MEASUREMENTS

Upper body approx. 62 (64) 69 (73) 80 (87) cm

Full length approx. 36 (40) 44 (48) 52 (56) cm

Sleeves approx. 24 (27) 33 (36) 38 (40) cm

YARN REQUIREMENTS

Colour 1 4 (4) 5 (6) 7 (8) balls

Colour 2 1 ball in all sizes

Colour 3 1 ball in all sizes

COLOURS

Colour 1 Powder 8152

Colour 2 Plum 8148

Colour 3 Pale Old Pink 8104

SUGGESTED NEEDLES

3 mm and 4 mm long and short circular needles and DPNs

GAUGE

22 sts with stocking st on 4 mm needles = 10 cm

32 R stocking st on 4 mm needles = 10 cm

Alternative yarn: ALPAKKA FORTE CLASSIC,
NATURAL LANOLIN WOOL, MERINO 22

Check your gauge by working a swatch.

Count the number of sts per 10 cm. If you have more sts than suggested, change to a larger needle size. If you have fewer sts change to a smaller needle size.

FIND THE RIGHT SIZE

1. Measure a garment that fits.
2. Compare your measurements with those in the pattern.
3. Select a size based on the upper body measurements.
4. Body and sleeves may be worked longer or shorter as desired.

ABBREVIATIONS

k = knit, p = purl, st = stitch, R = round/row,
DPN = double pointed needles, Y/O = yarn over,
K2tog = knit 2 together, m = marker, PM = place marker,
tbl = through back loop, m1l = make one left,
m1r = make one right, RS/WS = right/wrong side



BODY

Cast on 136 (140) 152 (160) 176 (192) sts with colour 1 on 3 mm circular needles.

Work 6 cm twisted rib in the round (K1 tbl, P1). PM around 1 st in each side, with 67 (69) 75 (79) 87 (95) sts for both the front and back pieces.

Change to 4 mm circular needles and work stocking st until the piece measures 21 (24) 27 (29) 33 (35) cm. On the last R, cast off 9 (9) 9 (9) 11 (11) sts for the armholes on each side (= marker sts + 4 (4) 4 (4) 5 (5) sts on each side) = 59 (61) 67 (71) 77 (85) sts on both the front and back pieces.

Leave sts on the needle.

SLEEVES

Cast on 34 (36) 38 (40) 42 (44) sts with colour 1 on 3 mm DPNs.

Work 5 cm rib in the round with K1 tbl, P1. Change to 4 mm needles. PM around the first st on the round (= m st).

© House of Yarn AS

The copying and publication of materials and patterns, or their use for commercial purposes, is not allowed without prior agreement with House of Yarn AS.

Photo: Sofie Hammer @by.sofiehammer



Continue with stocking st. When the sleeve measures 6 cm, increase 1 st on each side of the m st. Repeat the increases every 1.5 (1.5) 2 (2.5) 2.5 (2.5) cm 10 (11) 11 (12) 13 (13) times in total = 54 (58) 60 (64) 68 (70) sts.

Work until the piece measures 24 (27) 33 (36) 38 (40) cm.

On the last round, cast off 9 (9) 9 (9) 11 (11) sts under the sleeve (= m st + 4 (4) 4 (4) 5 (5) sts on each side) = 45 (49) 51 (55) 57 (59) sts. Leave sts on the needle and work the other sleeve.

YOKE

Place the left sleeve, front piece, right sleeve and back piece on 4 mm circular needles = 208 (220) 236 (252) 268 (288) sts. PM around 2 sts in each transition (= 1 st from sleeve and 1 st from front or back piece) = 4 m.

K 0 (1) 1 (2) 2 (2) R with colour 1. Continue with stocking st and colourwork according to the diagram. Count outwards from the middle of each piece (sleeves, front and back pieces) to determine where the diagram should begin. **At the same time**, on R 2 after joining the pieces, decrease for raglan by K2tog tbl before each m and K2tog after each m.

Decrease with the colour which fits the pattern best. M sts are always worked with colour 1. **NOTE!** On the R in the diagram where colour 1 is not used, slip m st.

Repeat the raglan decreases every 4th round a total of 10 (12) 12 (11) 11 (11) times, then every 2nd round 2 (0) 1 (4) 6 (8) times.

When you have worked the full diagram, finish the piece in colour 1. **At the same time**, when you have decreased for raglan 9 (10) 10 (11) 12 (13) times, place 11 (11) 13 (15) 17 (17) sts mid-front on a st holder for the neckline. Work flat, continuing with raglan decreases as before. Cast off for the neck at the beginning of each R, 3, 2 sts on each side, then 1 st until you have decreased 12 (12) 13 (15) 17 (19) times for raglan. **NOTE!** When decreasing for raglan from WS, P2tog before each m and P2tog tbl after each m.

NECKLINE

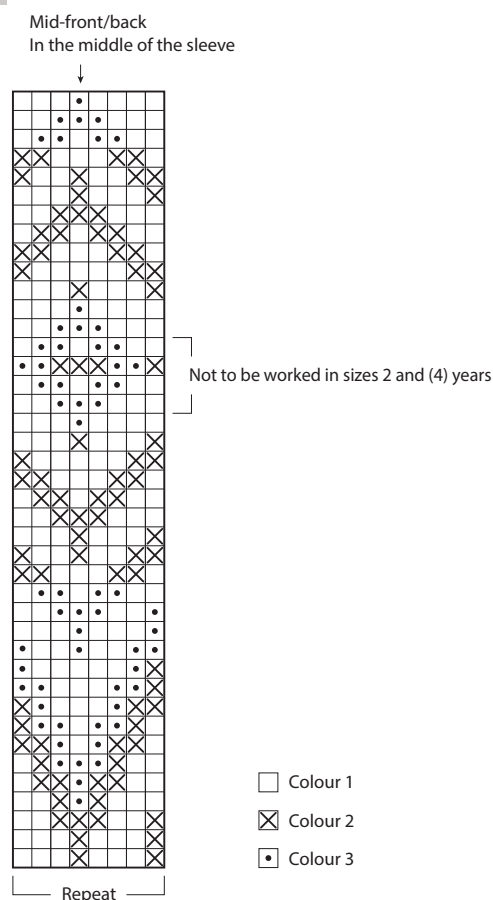
Change to 3 mm needles and pick up approx. 10 sts per 5 cm, including the sts from the st-holder. The st count must be divisible by 2.

Work twisted rib in the round (K1 tbl, P1) for 6 cm. Cast off loosely with K and P sts.

ASSEMBLY

Fold the neck double to the inside and sew down with loose stitches. Join underarm seams.

DIAGRAM



Do you need inspiration for your next knitting project? Check out the website houseofyarn.no