



DALE<sup>®</sup>  
GARN

HOUSE of YARN

# VILJA CARDIGAN

DG 437-16 | LERKE



Dale Garn – a part of HOUSE of YARN

DG 437-16

## VILJA CARDIGAN

### DESIGN

Mari K. Skjæveland

### YARN

LERKE 53 % merino wool, 47 % Egyptian cotton,  
50 grams = approx. 115 metres

### SIZES

XXS (XS) S (M) L (XL) XXL (XXXL)

**NOTE!** See [MEASUREMENTS](#) to find your size

### MEASUREMENTS

Upper body approx. 89 (93) 100 (110) 117 (127) 138 (145) cm

Full length approx. 49 (50) 52 (54) 56 (58) 60 (62) cm

Sleeves approx. 48 cm or to desired length

### YARN REQUIREMENTS

Colour 1 9 (9) 9 (10) 11 (12) 13 (15) balls

Colour 2 4 (4) 4 (5) 5 (5) 6 (6) balls

### COLOURS

Colour 1 Ochre 8143

Colour 2 Cinnamon 3046

### SUGGESTED NEEDLES

3.5 mm and 4 mm long circular needles

### GAUGE

23 sts textured pattern on 4 mm needles = 10 cm

**Alternative yarn:** ALPAKKA FORTE CLASSIC,  
NATURAL LANOLIN WOOL, MERINO 22

**Check your gauge by working a swatch.**

**Count the number of sts per 10 cm. If you have more sts than suggested, change to a larger needle size. If you have fewer sts change to a smaller needle size.**

### FIND YOUR SIZE

1. Measure a knitted garment that fits you.
2. Compare your measurements with those in the pattern.
3. Select your size based on the upper body measurements.
4. Body and sleeves may be worked longer or shorter as desired.

### ABBREVIATIONS

k = knit, p = purl, st = stitch, R = round/row,  
DPN = double pointed needles, k2tog = knit 2 together,  
m = marker, PM = place marker, Y/O = yarn over,  
tbl = through back loop, RS/WS = right/wrong side

#### © House of Yarn AS

The copying and publication of materials and patterns, or their use for commercial purposes, is not allowed without prior agreement with House of Yarn AS.



### BACK PIECE

Cast on 103 (107) 115 (127) 135 (147) 159 (167) sts with colour 2 on 3.5 mm needles. Work 4 cm rib flat as follows:

(R1 = WS) \*K1, P1\*, repeat from \*-\*, finish with K1. From RS: \*P1, K1\*, repeat from \*-\*, finish with P1. **NOTE!** Tighten the first and last sts well. Finish with a WS R. Change to 4 mm needles and continue as follows:

**From RS:** P1, K1, pattern according to diagram until 2 sts remain, K1, P1.

**From WS:** K1, P1, pattern according to diagram until 2 sts remain, P1, K1.

When the piece measures 47 (48) 50 (52) 54 (56) 58 (60) cm, cast off the middle 31 (33) 35 (37) 39 (43) 43 (45) sts for the neckline. Finish each side separately, and decrease for the neck every 2nd row: 1,1 st = 34 (35) 38 (43) 46 (50) 56 (59) shoulder sts. Work until the piece measures 49 (50) 52 (54) 56 (58) 60 (62) cm. Cast off.

Work the other side in the same way but in reverse.





### RIGHT FRONT PIECE

Cast on 57 (59) 63 (69) 73 (79) 85 (89) sts with colour 1 on 3.5 mm needles. Work 4 cm rib flat as follows:

(R1 = WS) \*K1, P1\*, repeat from \*-\*, finish with K1. From RS: \*P1, K1\*, repeat from \*-\*, finish with P1.

**NOTE!** Tighten the first and last sts well. Finish with a WS R.

Place the first 12 sts on a st holder for the front edge = 45 (47) 51 (57) 61 (67) 73 (77) sts. Change to 4 mm needles,

cast on 1 new st next to the front edge and continue as follows: **From RS:** K1, pattern according to diagram until 2 sts remain, K1, P1. **From WS:** K1, P1, pattern according to diagram until 1 st remains, K1.

When the piece measures approx. 29 (29) 30 (31) 32 (33) 34 (35) cm, decrease for V-neck from the RS as follows: K1, slip 1 st, K1, pass slipped st over, work to end of R. Repeat the decrease every 2nd R 5 times in total, then on ever 4th R 7 (8) 9 (10) 11 (13) 13 (14) times = 34 (35) 38 (43) 46 (50) 56 (59) sts. Work until the piece measures 49 (50) 52 (54) 56 (58) 60 (62) cm. Cast off.

### LEFT FRONT PIECE

Work in the same way as the right front piece but in reverse. Decrease for V-neck from RS as follows: Work until there are 3 sts left, K2tog, K1.

### SLEEVES

Cast on 50 (50) 52 (54) 56 (56) 58 (60) sts with colour 1 on 3.5 mm needles. Work 3 cm rib back and forth, with P1, K1 (R1 = WS).

**NOTE!** Tighten the first and last sts well. Change to 4 mm needles and K across 1 R, **while at the same time** increasing 29 (33) 37 (39) 41 (45) 47 (49) sts evenly spaced. Continue working according to diagram, inside 1 knitted edge st on each side; the edge sts are knitted on all R.

When the piece measures 20 cm, increase 1 st inside both edge sts. Repeat the increases every 5 cm, 4 (4) 4 (4) 4 (5) 5 (5) times in total = 87 (91) 97 (101) 105 (111) 115 (119) sts.

Work until the sleeve measures 48 cm or to desired length. Cast off. Work one more sleeve in the same way.

### ASSEMBLY

Join the side seams. Join the shoulder seams.

Join the sleeve seams and join sleeves to body.

**NOTE!** When joining, use mattress st, inside 1 edge st.

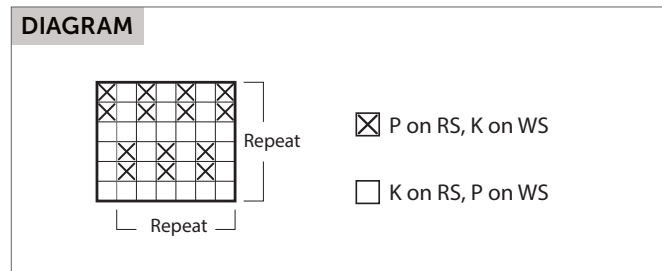
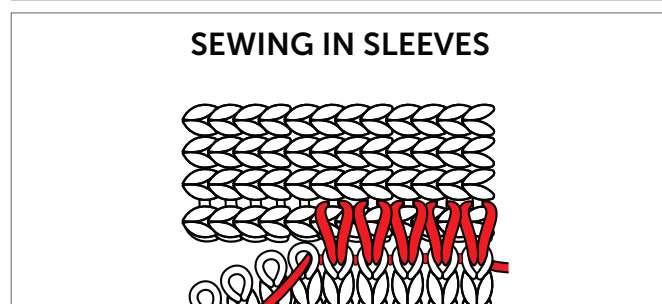
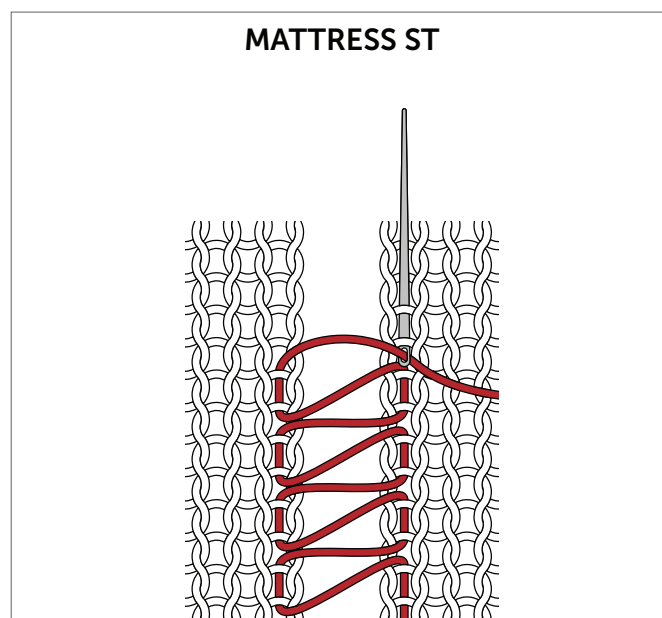
### LEFT FRONT EDGE

Place the 12 sts from the st holder onto 3.5 mm needles and work with colour 1. Work rib flat in the same way as before.

Work until the edge is the same length as the front piece and it reaches the middle of the back piece when stretched well. Cast off.

### RIGHT FRONT EDGE

Work in the same way as the left edge. Join the edge to the front piece using mattress sts. Join the front edges together at the middle of the back piece.



Do you need inspiration for your next knitting project? Check out the website [houseofyarn.no](http://houseofyarn.no)