



KNITTING PATTERN

# Batida

## Sweater

Design: Garnstyrelsen | Hobbii Design

## MATERIALS

7 (8) 9 (10) 11 (12) skeins of Friends Wool, color Midnight Blue (87) – main color  
2 (2) 3 (3) 4 (4) skeins of Friends Wool, color Off White (02) – contrasting color

Circular needles 4.0 mm and 4.5 mm, 40 cm, and 60 or 80 cm

For the sleeves knit using double pointed needles or Addi Crasy needles 4.0 mm and 4.50 mm or using the Magic Loop technique.

6 stitch markers  
Darning needle

## YARN QUALITY

 Friends Wool, Hobbii

100% wool  
50 g = 100 m

## GAUGE

10 x 10 cm / 4" x 4" = 18 sts x 24 r in pattern

## SIZE

XS (S) M (L) XL (2XL)

## MEASUREMENTS

Chest circumference: 88 (96) 104 (112) 120 (128) cm

Total length, without collar: 54 (58) 62 (66) 68 (72) cm

## PATTERN INFORMATION

This unisex sweater is designed as a tribute to the Theatre Group Batida.

The sweater is knitted from the bottom up. The sweater should be knitted with a positive ease of approx. 5 cm/2" in relation to your chest measurement. As the sweater is knitted in Fair Isle, it will not expand much when worn, which is why I recommend that you go up a size, rather than end up with a sweater a little too small; especially if you are between two sizes.

## HASHTAGS FOR SOCIAL MEDIA

#hobbiidesign #garnstyrelsen  
#hobbiibatida

## BUY THE YARN HERE

<https://shop.hobbii.com/batida-sweater>

## QUESTIONS

If you have any questions regarding this pattern, please feel free to email us at [support@hobbii.com](mailto:support@hobbii.com)

Please make sure to include the pattern's name and number.

Happy Crafting!





# Pattern



## ABBREVIATIONS

K = knit

P = purl

st(s) = stitch(es)

inc = increase

m1r = make 1 right: pick up the bar back to front and knit it

m1l = make 1 left: pick up the bar front to back and knit it through the back loop only

k2tog = knit 2 stitches together

sl = slip

pssso = pass slipped stitch over

dec = decrease(s)

sm = stitch marker

BO = bind off

CO = cast on

## TIPS AND INFO

The stitch pattern is worked in a multiple of 8 and one pattern repeat is approx. 4 cm/1.6 inches high.

If you tend to work very loosely, it is recommended to knit using knitting needles half a size smaller.

On the other hand, if you tend to knit tightly, it is recommended to use needles half a size larger.

I always recommend making a gauge swatch before starting to check your gauge against the one stated in this pattern. Make sure not to make the floats (the strands on the wrong side of work) too tight when working the Fair Isle pattern.

## Fair Isle

On some rounds, you will be working with more than one strand on the same round, meaning both colors will be used on the same round. The strand you hold to the left, will be the dominant color. For this sweater I recommend that the dominant color is the contrast color (Off White).

## BODY

CO 176 (192) 208 (224) 240 (256) sts using circular 4.0 mm. Join to work in the round, making sure not to twist your work.

Work the first round in stockinette stitch (k on RS).

Now place a sm in the first st and work 6 cm/4.4 inches of rib stitch (k1, p1).

Then change to circular needles 4.5 mm and work two rounds of stockinette stitch.

### You will now work the body according to the chart.

work until body measures 34 (38) 42 (44) 44 (48) cm/ 13.4 (15) 16.5 (17.3) 17.3 (18.9) inches

Then BO 8 sts in each side like this:

BO 4 sts, knit 80 (88) 96 (104) 112 (120) sts, BO 8 sts, knit 80 (88) 96 (104) 112 (120) sts, BO 4 sts. For all sizes it is important to BO on the final round in the stitch pattern to join work for the raglan yoke on the two rounds worked in just the main color.

After binding off you will have 160 (176) 192 (208) 224 (240) sts left.

Let work rest and continue making the sleeves.

## SLEEVES

CO 54 (54) 54 (62) 62 (70) sts using double pointed needles, Addy Crazy, or circular needles 40 cm 4.0 mm or using the Magic Loop Method.

When working sleeves, it is always a good idea to measure the length of your arm from 3 fingers below your armpit and to the wrist, however long you want your sleeves. Then make the sleeves the length that suits you.

Join to work in the round, being careful not to twist your sts. Work the first round in stockinette stitch (k on RS).

Now work 7 cm/4.8 inches of rib stitch (k1, p1).

Then change to circular needles 4.5 mm and work two rounds of stockinette stitch, while on the first round increasing 2 sts like this: place a sm in the first st, knit this st, m1l, knit until last st, m1r = 56 (56) 56 (64) 64 (72) sts around.

### The work the sleeve in stitch pattern according to the chart

New ornaments in the pattern repeat are incorporated as new sts are increased.

You will increase 2 sts as described above on every 9<sup>th</sup> round, i.e., on the first of the two rounds worked only in the main color.

You will increase like this a total of 9 (9) 10 (10) 10 (11) times until you have 74 (74) 76 (84) 84 (94) sts for the sleeve.

Work until sleeve measures 42 (44) 46 (48) 50 (52) cm/ 16.5 (17.3) 18.1 (18.9) 19.7 (20.5) inches. For the best fit, try on the sleeve as you go.

Then BO 4 sts in each side like this: BO 4 sts, knit 66 (66) 68 (76) 76 (86) sts, BO 4 sts.

For all sizes it is important to BO on the final round in the stitch pattern to join work for the raglan yoke on the two rounds worked in just the main color.

Make one more sleeve the same way.

## RAGLAN YOKE

Join sts from the sleeves with sts from the body on one set of circular needles. place a sm in each join between body and sleeves = 4 sm in total.

After joining body and sleeves, you will have a total of 292 (308) 328 (360) 376 (412) sts.

When working the yoke your beginning of round will be on the back panel at the right shoulder. Place a sm in the first st on the left sleeve, which is also the first st in the contrasting color when working raglan decreases as described below. Your round starts here.

The raglan seam on the Batida Sweater is created by decreases made one each side of two purl stitches worked in the main color and with a knit stitch in the contrasting color in the middle. The decreases are always worked in the main color regardless of the stitch pattern.

On the two rounds worked only in the main color, you will carry the contrasting color around by 'locking' it every 4. st on the first round and every 5. st on the second round.

Be sure not to pull the contrasting color too tightly when working these rounds.

Now work the yoke with raglan decreases like this:

Knit the first st in the contrasting color (Off White), purl 2 sts using the main color (Midnight Blue), k2tog and work until the last 4 sts on the left sleeve, sl1, k1, pss0, p 2 using the main color, k 1 using the contrasting color, p 2 using main color, k2tog and work across the front panel until 4 sts before marker, sl1, k1, pss0, p2 using the main color, k 1 using the contrasting color, p 2 using main color, k2tog and work until the last 4 sts on the right sleeve, sl1, k1, pss0, p2 using the main color, k 1 using the contrasting color, p 2 using main color.

Work one more round the same way including decreases.

Then work the stitch pattern according to the chart again, adjusting it to fit after the decreases.

You will work a total of 5 (5) 5 (5) 6 (6) pattern repeats = 45 (45) 45 (45) 54 (54) rounds plus 2 rounds in the main color in stockinette stitch before starting the collar.

You will decrease 8 sts 25 (27) 29 (32) 34 (38) times and you will adjust the number of decreases by sometimes decreasing every round and other times every second round.

Once the raglan decreases have all been made, you will have (92) 96 (104) 104 (104) sts for the neck opening.

If you prefer a shorter/longer yoke and/or a tighter/looser neck opening, you can adjust this by decreasing more/fewer sts and/or working more/fewer rounds.

## TURTLENECK

Change to circular needles 4.0 mm and work 30 cm/ 12 inches of k1, p1 rib stitch.

NOTE: For the best result, you want the knit and purl stitches of the turtleneck to correspond with the knit and purl sts from the raglan seams. This means you need to work the 2x2 purl sts from the raglan seams together to one purl st on the first round of the rib stitch pattern for the turtleneck.

BO all sts loosely in rib stitch (k1, p1).

## FISHING AND WASHING

Discreetly weave in all ends.

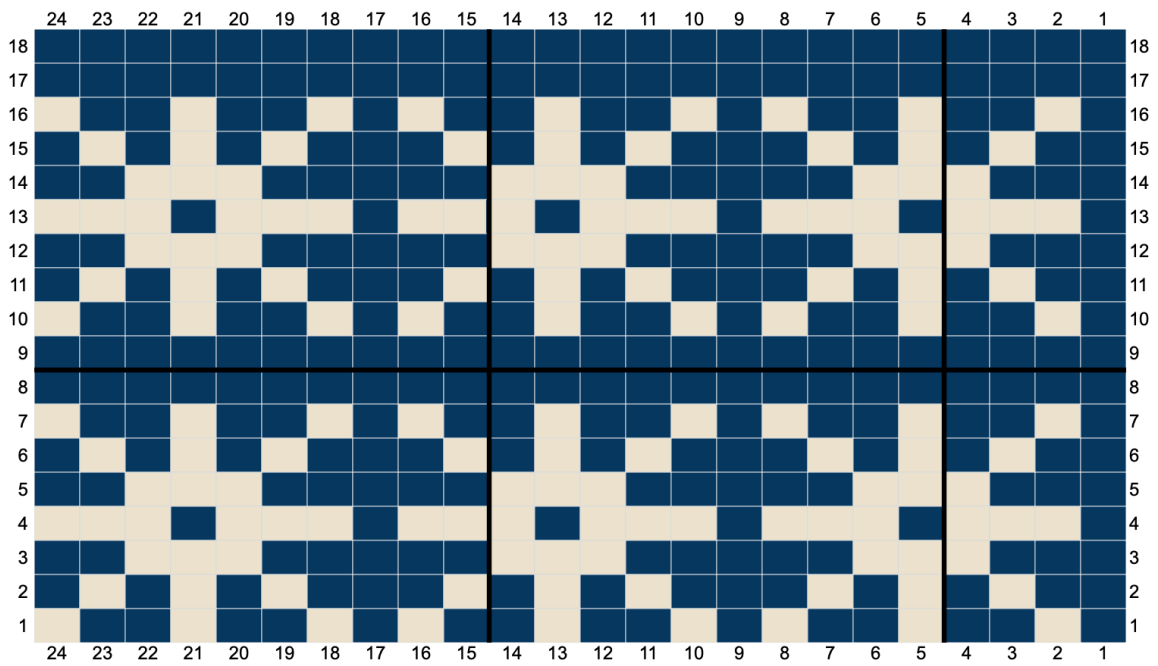
Gently wash using a good wool detergent either by hand or using the wool setting on the washing machine at max. 30 degrees Celsius and max. 400 rpm.

Stretch sweater into shape and let dry flat to even out stitches.

## Enjoy!

Garnstyrelsen





**Note:** Read the chart from right to left.