



KNITTING PATTERN

Min Hund

Children's Sweater

Design: Garnstyrelsen | Hobbii Design

MATERIALS

Friends Extra Fine Merino

2 (3) 4 (4) 5 skeins of col. (114) Sage

1 (1) 1 (1) 1 skein of col. (10)

Cappuccino

1 (1) 1 (1) 1 skein of col. (40) Tomato -
for embroidering the dog's collar

1 (1) 1 (1) 1 skein of col. (124) Black -
for embroidering the dog's eyes (or
some black scrap yarn you might have
lying around)

Circular needles 3.5 mm/US 4 and 4.0
mm/US 6, 40 cm/15.7 in. and 60
cm/23.6 in

4 stitch markers

Tapestry needle for weaving in ends

Stitch holder

YARN QUALITY

 Friends Extra Fine Merino, Hobbii

100% Wool

50 g (1.75 oz) = 165 m (180 yds)

GAUGE

10 x 10 cm (4" x 4") = 20 sts x 25 rows
on needles 4.0 mm/US 6

SIZE

1-2 (2-4) 4-6 (6-8) 8-10 years

MEASUREMENTS

Chest circumference: approx. 48 (60) 72
(84) 96 cm / approx. 18.9 (23.6) 28.3
(33.1) 37.8 in.

Full length: approx. 39 (42) 46 (49) 51 cm
/ approx. 15.4 (16.5) 18.1 (19.3) 20.1 in.

PATTERN INFORMATION

The "Min Hund" children's sweater is
inspired by the joy my grandchildren
have for our Cairn Terrier, Elron.

The "Min Hund" sweater is worked from
the bottom up. The body and sleeves are
joined to form the yoke, after which the
dog pattern with decreases is worked
according to the chart. The pattern is a
multiple of 24 stitches

The sweater is worked in the very light
and elastic yarn, Friends Extra Fine
Merino.

It is worked on needles 3.5 mm/US 4 for
the ribbing and needles 4.0 mm/US 6 for
the body and sleeves. For the sleeves,
you may want to use the Magic Loop
technique.

The dog's collar and eyes are most easily
embroidered using chain stitches. That
way, they turn out most visible.

HASHTAGS FOR SOCIAL MEDIA

#hobbiidesign #garnstyrelsen

#hobbiiminhund

BUY THE YARN HERE

[https://shop.hobbii.com/min-hund
-children-s-sweater](https://shop.hobbii.com/min-hund-children-s-sweater)

QUESTIONS

If you have any questions regarding this pattern, please feel free to email us at
support@hobbii.com

Please make sure to include the pattern's name and number.

Happy Crafting!

Pattern



ABBREVIATIONS

- K = Knit
- P = Purl
- K tbl = Knit stitch through the back loop
- St(s) = Stitch(es)
- Rnd(s) = Round(s)
- M = Stitch marker

INFO AND TIPS

Measure your child's chest circumference and then decide which size is going to fit best. I recommend that you always do a swatch first to see how your gauge corresponds to the one specified here in the pattern.

Extra Fine Merino is a very elastic yarn that drapes nicely on the body.

I also recommend that you first read through the entire pattern before starting to work the sweater to get an overview of the pattern.

To knit though the back loop, insert the tip of the right needle from the front through the back loop instead of the front as with a regular knit stitch.

TIPS FOR THE INCREASES AFTER THE RIBBING ON THE BODY AND ON THE SLEEVES

To work an increase, yarn over. On the next rnd, k the yarn over tbl to avoid a hole appearing in your work.

ADDING HEIGHT TO THE NECK WITH GERMAN SHORT ROWS

You work German Short Rows in the back of the neck by working up until the place where you want to turn. Then you turn your work and insert your right needle in the left st from the back but with the yarn in front.

Lift the stitch onto your right needle by pulling it "backwards" on the needle, so that it gets "two legs" to stand on creating a double st. Continue working until the next st where you want to turn and repeat the process. When you get back to the double st you simply work it like a regular st and continue.

Work 4 rows of German Short Rows. If you would like a bit more height in the back of the neck, you just work as many rows as you like.

The German Short Rows at the back of the neck of the sweater are worked right after the last rnd in which you work the decreases.

If you want to, you can watch this tutorial regarding German Short Rows:

https://youtu.be/4Bz7YhiXuA8?si=gB7s_vXz3B6cWeHJ

BODY

Cast on 96 (120) 144 (168) 192 sts on circular needles 3.5 mm/US 4 using the main color. Join to work in the round, but make sure not to twist the work, then work 1 rnd stockinette to get a neat edge. Afterwards work 4 (4) 5 (5) 5 cm / 1.6 (1.6) 2 (2) 2 in. ribbing - k1, p1.

Change to circular needles 4.0 mm/US 6 and work increases evenly until you have a total of 108 (132) 156 (180) 204 sts on the rnd. The increases are described under the section "Info and tips". Continue in stockinette stitch until the armhole, i.e. when the work measures 19 (22) 25 (28) 30 cm / 7.5 (8.7) 9.8 (11) 11.8 in. or the desired length. Insert a M in each side of the work, i.e. in the first st and in the 55th (67th) 79th (91st) 105th st. Now bind off 12 sts on both sides of the M (6 sts before the M and 6 sts after the M) in each side of the work. There are now a total of 84 (108) 132 (156) 180 sts left.

Let the work rest and work the sleeves.

SLEEVES

Cast on 42 (42) 44 (46) 48 sts using the main color on circular needles 3.5 mm/US 4, 40 cm/15.7 in. (or using the Magic Loop technique if you prefer). Work 1 rnd stockinette stitch to get a neat edge.

Then work 5 (5) 6 (6) 6 cm / 2 (2) 2.4 (2.4) 2.4 in. ribbing - k1, p1.

After the ribbing, change to circular needles 4.0 mm/US 6 and continue in stockinette stitch.

Place a M in the first st of the rnd.

Work 1 increase on both sides of the M on every 6 (7) 7 (8) 8 rnd.

The increase is described under the section "Info and tips".

Work increases until you have a total of 66 (66) 66 (78) 78 sts for the sleeve.

When the sleeve measures 22 (25) 28 (31) 34 cm / 8.7 (9.8) 11 (12.2) 13.4 in., you bind off the first 6 sts and the last 6 sts on the sleeve. You now have a total of 54 (54) 54 (66) 66 sts left.

Let the sleeve rest and work another sleeve in the same way.

YOKE

Join the sts from the sleeves with the sts from the body on circular needles 4.0 mm/US 6, 60 cm/23.6 in. You now have a total of 192 (216) 240 (288) 312 sts on the rnd.

Place the stitch markers at the joins as well as in the middle of the back of the neck, if you intend to work a higher neck using German Short Rows as described under the section "Info and tips"

NOTE: When you work the yoke, the rnd always begins and ends at the back at the left shoulder. You may want to place a M that differs from the others, so you are never in doubt about where the beginning/end of your work is.

Work 4 (4) 6 (6) 8 rnds with the main color before working the chart. .

Then work the chart. At this point, you have 72 (82) 90 (108) 118 sts for the neckline.

If you would like to add some height to the back of the neck you do this now before working the ribbing for the neckline.

NECKLINE

Work 4 (4) 5 (5) 5 cm / 1.6 (1.6) 2 (2) 2 in. ribbing - k1, p1. and finish with 1 rnd of stockinette stitch.

Cast off the sts of the neck evenly and loosely to make sure that the sweater can be pulled over your child's head without the neckline being too tight.

ASSEMBLY AND WASHING

Weave in all ends discreetly.

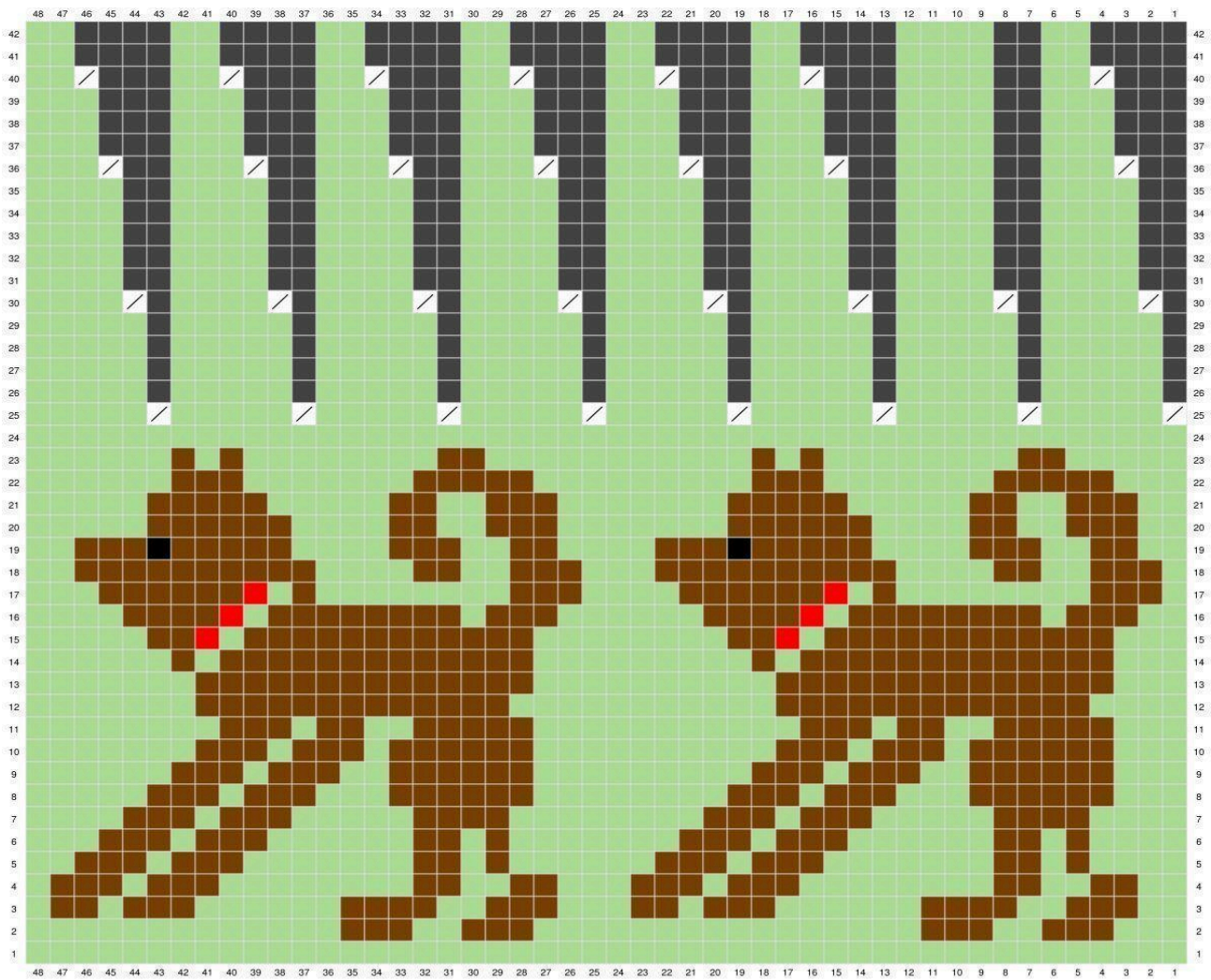
Wash the sweater with a good quality wool detergent at max. 30°C (86°F) on the washing machine's wool program and at max. 400 revolutions.







Stretch the sweater into shape on a towel and maybe steam it through a damp dish towel when dry so the sweater ends up nice and even.

Enjoy!

Love,
Garnstyrelsen





-  Knit 2 sts together
-  This stitch does no longer exist
-  Eye - embroidered using 1 chain stitch
-  Collar - embroidered using 3-4 chain stitches
-  Pattern color - Cappuccino
-  Main color - Sage