



KNITTING PATTERN

Sylvie

Scarf

Design: Libère tes mailles | Hobbii Design





MATERIALS

4 skeins of Portobello col. Misty Green (113)
1 skein Friends Kid Silk in each color:
Plum (62)
Lilac (63)
Pumpkin (31)
Artichoke (110)

Straight Needles 5 mm/ US 8
Darning needle

YARN QUALITY

 **Portobello**, Hobbii
60% Cotton, 28% Acrylic, 12% Wool
50 g (1.75 oz) = 120 m (131 yds)

 **Friends Kid Silk**, Hobbii
72% Mohair, 25% Silk, 3% Wool
25 g (0.9 oz) = 200 m (218 yds)

GAUGE

One pattern repeat = 6.5 cm / 2.6" wide x
3.5 cm / 1.4" height

SIZE

One size

MEASUREMENTS

Width: 29 cm / 11.4"
Length: 159 cm / 62.5"

PATTERN INFORMATION

With its soft main color and pretty flowers in bright colors, the Sylvie scarf announces spring in a beautiful garden.

It's worked in a simple lace pattern, then flowers and leaves are worked with two strands of Friends Kid Silk to bring more fluffiness.

This scarf works quickly with a simple stitch pattern. A chart is available for the stitch pattern as well as written instructions. For the flowers a few pictures are available to guide you.

HASHTAGS FOR SOCIAL MEDIA

#hobbiidesign #hobbiisylvie
#hobbiimagicalgarden

BUY THE YARN HERE

<https://shop.hobbii.com/sylvie-scarf>

QUESTIONS

If you have any questions regarding this pattern, please feel free to email us at support@hobbii.com. Please make sure to include the pattern's name and number.

Happy Crafting!



Pattern



ABBREVIATIONS

st(s) = stitches

k = knit

p = Purl

yo = yarn over

sl kw = slip stitch knitwise

k2tog = knit 2 sts together

k2tog tbl = knit 2 sts together through the back loops

Sl2-k1-p2sso = slip 2 sts together knitwise, knit next st, pass 2 slipped sts together over k1. 3 sts become 1.

M1 = make one, pick up the bar between sts, knit it through the back loop to avoid hole

RS = right side

WS = wrong side

INFO AND TIPS

First the scarf is worked with a beautiful and airy stitch pattern. Then, flowers and leaves are worked using 2 strands of Kid Silk. The scarf is blocked and flowers and leaves are sewn on the scarf.

The stitch pattern for the scarf is easy to follow. Edge stitches and a few sts in moss stitch are worked on each side to avoid the scarf to roll.

The 4 first and the 4 last sts are the borders. The lace pattern is worked with a multiple of 10 sts + 1. If you want to make a narrower/wider scarf, subtract/add 10 sts to the number of stitches required.

You can choose to follow the written explanations or the chart for the scarf.

SCARF

With Portobello color Misty Green and 5 mm/ US 8 needles.

Cast on 49 sts

Rows 1 & 2: Sl1 kw, k all sts across. Turn.

Follow the instructions below or the chart.

Row 3 (RS): Sl1 kw, p1, k1, p1, *k1, yo, k2tog tbl, k5, k2tog, yo* repeat from * to * until 5 sts left. K1, (p1, k1)x2. Turn.

Row 4 (ws): Sl1 kw, p1, k1, p all sts across until 3 sts left, k1, p1, k1. Turn.

Row 5: Sl1 kw, p1, k1, p1, *k2, yo, k2tog tbl, k3, k2tog, yo, k1* repeat from * to * until 5 sts left. K1, (p1, k1)x2. Turn.

Row 6: Sl1 kw, p1, k1, p all sts across until 3 sts left, k1, p1, k1. Turn.

Row 7: Sl1 kw, p1, k1, p1, *k3, yo, k2tog tbl, k1, k2tog, yo, k2* repeat from * to * until 5 sts left. K1, (p1, k1)x2. Turn.

Row 8: Sl1 kw, p1, k1, p all sts across until 3 sts left, k1, p1, k1. Turn.

Row 9: Sl1 kw, p1, k1, p1, *k4, yo, Sl2-k1-p2sso, yo, k3* repeat from * to * until 5 sts left. K1, (p1, k1)x2. Turn.

Row 10: Sl1 kw, p1, k1, p all sts across until 3 sts left, k1, p1, k1. Turn.

Repeat rows 3 to 10 until your work measures approx. 160 cm / 62.5" or your desired length, finish with a WS row.

Last rows: Sl1 kw, k all sts across for two rows.

Cast off on the WS and weave in ends.

Block your scarf if you want. I chose to not do it, it rolls a little but I like it like this.

FLOWERS AND LEAVES

Flowers and leaves are worked with 2 strands of Friends Kid Silk held together, using the outer strand and the middle strand.

I worked in total:

- 4 big flowers and 4 little flowers in each of the following colors: Plum (62), Lilac (63) and Pumpkin (31)
- 8 big leaves color Artichoke (110)
- 12 little leaves color Artichoke (110)

I recommend to work only half of this amount first, then placing them on one end of the scarf, and see if you want less/more leaves or flowers of a certain color/size. And thus

anticipate the total number of items to do if you want more/ less of a certain color than in the example shown.

BIG FLOWER

With the color of your choice, using 2 strands of Friends Kid Silk and 5 mm/ US 8 needles.

Each petal is worked in short rows.

Cast on 7 sts Turn.

K5. Turn

P3. Turn

K 4. Turn

P5. Turn

K6. Turn

P7. Turn

K2tog tbl, k3tog, k2tog. Turn

P3. (Pic 1)

Cast on 7 with knitted cast-on method (Pic 2) and repeat from * to * 4 more times to have 5 petals. For each petal you'll have 3 more sts. At the end you'll have 15 sts on needle.

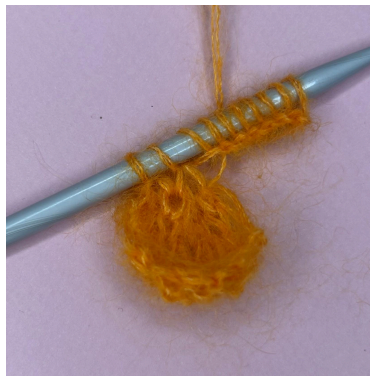
Slip all sts back to the left needle. Cut the yarn leaving a long tail to sew (Pic 3).

Thread a needle and pass through all the stitches, starting in the opposite stitch of the last one (Pic 4 & 5). Pull tight to form the flower, and sew the first and the last stitches of the row just above. The petals will bend, this is normal. Push the petals if necessary, to have the hollow on the right side (Pic 6 & 7)

Here is a video to help you: <https://www.instagram.com/reel/C1plae9NCeR/>



Picture 1



Picture 2



Picture 3



Picture 4



Picture 5



Picture 6: Hollows on the wrong side



Picture 7: Hollows on the right side

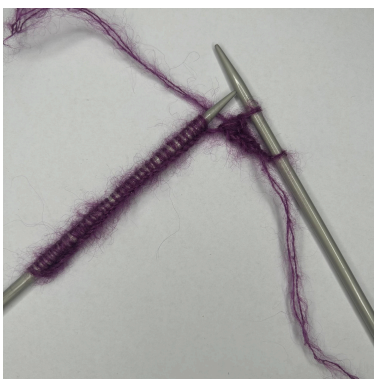
TINY FLOWER

With the color of your choice, using 2 strands of Friends Kid Silk and 5 mm/ US 8 needles.

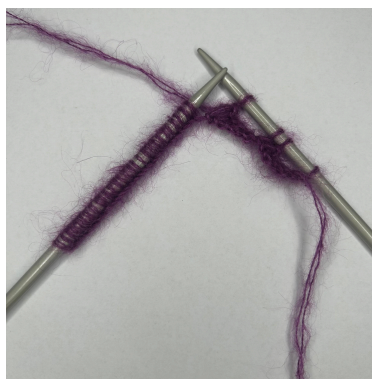
CO 42 sts. Turn.

K1, BO 5 sts. (Pic 1). Repeat from * to * 5 more times until the end of the row. You'll have 6 'petals' (Pic 2 & 3)

Slip all sts back to the left needle. Cut the yarn leaving a long tail to sew. Thread a needle and pass through all the stitches, starting in the opposite stitch of the last one (Pic 4). Pull tight to form the flower, and sew the first and the last stitches of the row just above. (Pic 5 & 6)



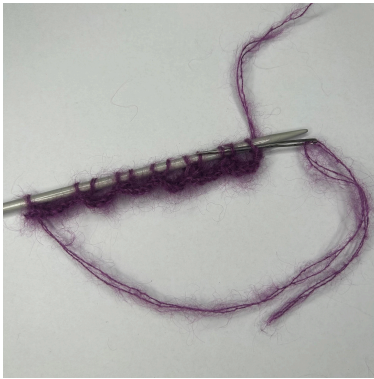
Picture 1



Picture 2



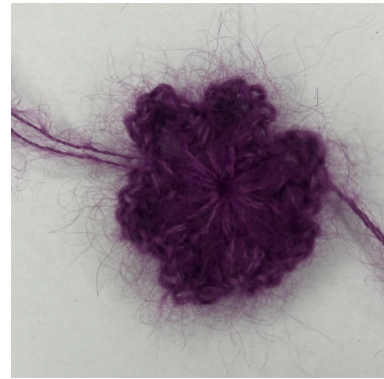
Picture 3



Picture 4



Picture 5



Picture 6

BIG LEAVES

With 2 strands of Friends Kid Silk color Artichoke (110) and 5 mm/ US 8 needles.

Start to knit an i-cord for the stem and then the leaf.

Cast on 2 sts, leaving a long tail to sew.

Row 1: K2.

Rows 2 to 15: Do not turn, place the 2 sts back to the left needle. K2

Row 16: Do not turn, place the 2 sts back to the left needle. K1, M1, k1 and TURN (3 sts)

Row 17: K1, p1, k1. Turn (3 sts)

Row 18: K1, M1, sl1 kw, M1, K1. Turn (5 sts)

Row 19: K2, p1, k2. Turn (5 sts)

Row 20: K2, M1, sl1 kw, M1, K2. Turn (7 sts)

Row 21: K3, p1, k3. Turn (7 sts)

Row 22: K3, M1, sl1 kw, M1, K3. Turn (9 sts)

Row 23: K4, p1, k4. Turn (9 sts)

Row 24: K4, sl1 kw, K4. Turn (9 sts)

Rows 25 and 26: Repeat Rows 23 and 24.

Row 27: k all sts. Turn (9 sts)

Row 28: K2tog tbl, k to 2 sts left, K2tog. Turn

Row 29: k all sts. Turn

Rows 30 to 33: Repeat Rows 28 and 29. You will have 3 sts remaining on your needle. Turn

Row 34: Sl2-k1-p2sso.

Fasten off and weave in the end.

SMALL LEAVES

With 2 strands of Friends Kid Silk color Artichoke (110) and 5 mm/ US 8 needles.

Start to knit an i-cord for the stem and then the leaf.

Cast on 2 sts, leaving a long tail to sew.

Row 1: K2.

Rows 2 to 10: Do not turn, place the 2 sts back to the left needle. K2

Row 11: Do not turn, place the 2 sts back to the left needle. K1, M1, k1 and TURN (3 sts)

Row 12: K1, p1, k1. Turn (3 sts)

Row 13: K1, M1, sl1 kw, M1, K1. Turn (5 sts)

Row 14: K2, p1, k2. Turn (5 sts)

Row 15: K2, M1, sl1 kw, M1, K2. Turn (7 sts)

Row 16: K3, p1, k3. Turn (7 sts)

Row 17: K3, sl1 kw, k3. Turn (7 sts)

Rows 18 and 19: Repeat Rows 16 and 17.

Row 20: k all sts. Turn (7 sts)

Row 21: K2tog tbl, k to 2 sts left, K2tog. Turn

Row 22: k all sts. Turn

Rows 23 to 24: Repeat Rows 21 and 22. You will have 3 sts remaining on your needle. Turn

Row 23: Sl2-k1-p2sso.

Fasten off and weave in the end.

ASSEMBLY

It's time to play!

Lay your scarf flat, with the two ends of the scarf in front of you. Take your flowers and leaves and choose where to place them, play with the colors and the size, let your imagination run wild.

My flowers and leaves cover approx. 22 cm / 8.7" of each end but it is totally up to you. You work more flowers!! But keep in mind that the scarf will not stay flat when worn. So you can leave spaces between the flowers, once worn it will look more abundant.

Sew the leaves only on top of the stem.

Sew each big flower in the center of the flower and each petal, but leave the top of the petals not sewn. Sew the little flower on the center only.



Dare and unleash your stitches!

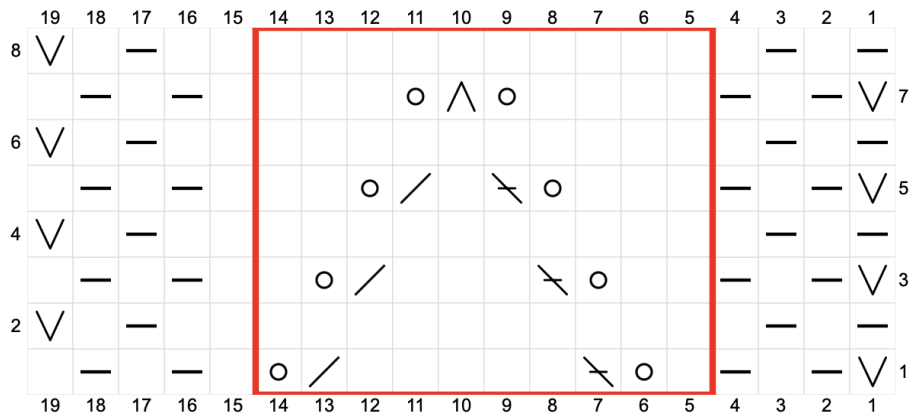
I'll be over the moon to see your work. If you use Instagram don't hesitate to tag me @libere.tes.mailles or use hashtags #liberetesmailles #hobbii design Thank you!!

Enjoy!

Alexandra, Libère tes mailles



CHART



Legend



slip stitch knitwise



RS: knit
WS: purl



RS: purl
WS: knit



Yarn over



knit 2 sts together through the back loops



knit 2 sts together



slip 2 sts together knitwise, knit next st,
pass 2 slipped sts together over k1. 3 sts become 1.



The red frame is the repetition of the pattern