

CROCHET PATTERN

# Paw Prints

Blanket

Design: [Manatee\\_Squares](#) | Hobbii Design




## MATERIALS

5 (9, 12) skeins of Amigo Chunky color A28  
Hunter Green

Crochet hook 7 mm (US K/10.5)  
Darning needle

## YARN QUALITY

 **Amigo Chunky**, Hobbii  
100 % Acrylic  
100 g / 3.5 oz = 100 m / 109 yds

## GAUGE

10 cm x 10 cm (4" x 4") = 10 sts x 6 rows

## ABBREVIATIONS

ch = chain  
dc = double crochet  
fdc = foundation dc  
ss = slip stitch  
st(s) = stitch(es)  
BPdc = back post dc  
FPdc = front post dc  
sk = skip  
\* \* = repeat directions between \* \* as  
many times as instructed

## SIZE

S (M, L)

## MEASUREMENTS

Width: 73 (93, 113) cm / 28.7" (36.6", 44.5")  
Length: 70 (96, 109) cm / 27.6" (37.8", 43")

## PATTERN INFORMATION

The pawfect blanket for all your furry pals or the animal lover in your life, the Paw Prints Blanket uses simple filet chains and spaces to create a cute paw print motif.

## HASHTAGS FOR SOCIAL MEDIA

#hobbiidesign #hobbiiyaprints  
#hobbiiadogsworld

## BUY THE YARN HERE

<https://shop.hobbii.com/paw-prints-blanket>

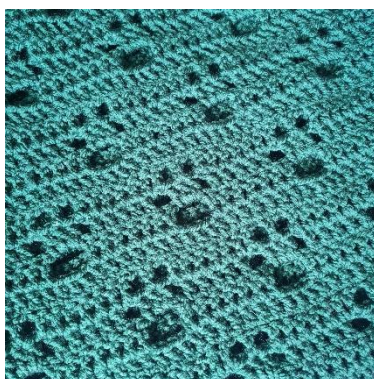
## QUESTIONS

If you have any questions regarding this pattern, please feel free to email us at [support@hobbii.com](mailto:support@hobbii.com)

Please make sure to include the pattern's name and number.

Happy Crafting!

# Pattern



## INFO AND TIPS

Turning ch does not count as a st throughout. Don't worry if your edges look a little wonky, they'll be hidden within the edging.

Work your filet chains loosely so they're easy to work into in the following row.

You can easily alter the size of your blanket by working extra or fewer sts, be sure to do so in multiples of 10. Note that your edging adds approx. 8cm.

	7	6	5	4	3	2	1	
	⌈	⌈	⌈	⌈	⌈	⌈	⌈	5
4	⌈	⌈	○	⌈	○	⌈	⌈	
	⌈	○	⌈	⌈	⌈	○	⌈	3
2	⌈	⌈	○	○	○	⌈	⌈	
	⌈	⌈	⌈	⌈	⌈	⌈	⌈	1
	7	6	5	4	3	2	1	

## BLANKET

**Row 1:** Fdc 65 (85, 105), turn.

OR ch 67 (87, 107), dc in third ch from hook and each ch along, turn.

**Row 2:** ch2, 6dc, \*ch3, sk 3 sts, 7dc\* to last 9 sts, ch3, sk 3 sts, 6dc, turn.

**Row 3:** ch2, 5dc, \*ch1, sk 1 st, 3dc in 3 ch-sp, ch1, sk 1 st, 5dc\* to end, turn.

**Row 4:** ch2, 6dc, \*ch1, sk 1 st, 1dc, ch1, sk 1 st, 7dc\* to last 9 sts, ch1, sk 1 st, 1dc, ch1, sk 1 st, 6dc, turn.

**Row 5:** ch2, dc in each st, turn.

**Row 6:** ch2, 11dc, \*ch3, sk 3 sts, 7dc\* to last 4 sts, 4dc, turn.

**Row 7:** ch2, 10dc, \*ch1, sk 1 st, 3dc in 3 ch-sp, ch1, sk 1 st, 5dc\* to last 5 sts, 5dc, turn.

**Row 8:** ch2, 11dc, \*ch1, sk 1 st, 1dc, ch1, sk 1 st, 7dc\* to last 4 sts, 4dc, turn.

**Row 9:** ch2, dc in each st, turn.

**Repeat Rows 2-9 3 (5, 6) MORE times then repeat Rows 2-5 once more for a total of 37 (53, 61) rows. Do not fasten off, turn and work edging.**

## EDGING

**Round 1:** ch2, 1dc in each st along the top edge of your blanket to final st, 3dc in the final st, place a marker in the centre st of those 3, rotate your work and evenly dc along the edge of your blanket working approx. 3dc to every 2 row ends, rotate your work and work 3dc in the first st at the bottom of your blanket, place a marker in the centre st of those 3, 1dc in each st along the bottom edge of your blanket to final st, 3dc in the final st, place a marker in the centre st of those 3, rotate your work and evenly dc along the edge of your blanket as before, rotate when you reach your top edge, work 3dc in the first st of the row, place a marker in the centre st of those 3, ss to join, do not turn.

**Round 2:** ch2, \*\* \*FPdc, BPdc\* to marked st, work 3 FPdc around your marked st and move your marker to the centre st of those 3 \*\*, work from \*\* to \*\* 3 more times, BPdc around your final st, ss to join, do not turn.

**Round 3:** Repeat Round 2 then FO.

**Enjoy!**

Lauren 😊

