



CROCHET PATTERN

Boomblaster

Design: Studio Manya | Hobbii Design

MATERIALS

Friends Cotton 8/8

Yarn A: Black (124) 1 skein

Yarn B: Turquoise (94) 2 skeins

Yarn C: Sunflower (24) 1 skein

Yarn D: White (001) 1 skein

Yarn E: Shamrock (104) 1 skein

Crochet hook 4 mm

Darning needle

Cardboard from empty parcel boxes

Toy filling

YARN QUALITY

 **Friends Cotton 8/8**, Hobbii

100% Cotton

50 g (1.75 oz) = 75 m (82 yds)

SIZE

One size

MEASUREMENTS

Bredde: 16.5 cm / 6.5 inches

Højde: 14 cm / 5.5 inches (without the handle)

Dybde: 5 cm / 2 inches

PATTERN INFORMATION

Crochet your very own retro boomblaster in the awesome Turquoise color! Use it to decorate the house or leave out the paper clips and let the children play with it.

It is crocheted in Friends Cotton 8/8 og the details are embroidered on before crocheting it together.

HASHTAGS FOR SOCIAL MEDIA

#hobbiidesign

BUY THE YARN HERE

<https://shop.hobbii.com/boomblaster>

QUESTIONS

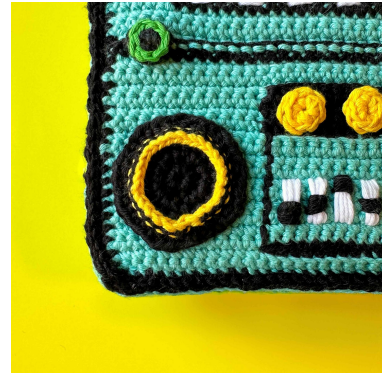
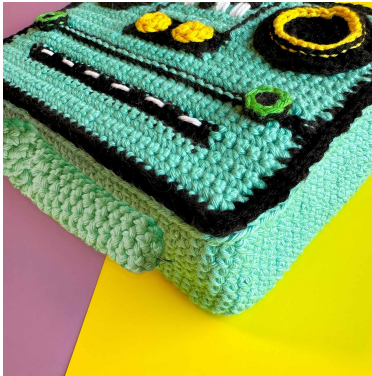
If you have any questions regarding this pattern, please feel free to email us at support@hobbii.com

Please make sure to include the pattern's name and number.

Happy Crafting!



Pattern



ABBREVIATIONS

ch = chain
 st = stitch
 sl st = slip stitch
 sc = single crochet
 blo = back loop only
 flo = front loop only
 WS = wrong side
 RS = right side
 rep = repeat

INFO AND TIPS

Unless stated otherwise, work into both loops of stitch.
 Pieces in rows are worked from second ch from hook.
 Pieces in the round are worked in a continuous spiral.
 Change color on last pull through of last stitch in previous color.

BOOM BLASTER

Back

With yarn B, 36ch.

Row 1-29: 1 sc in each st, turn – 35 sc.

Continue to work around entire outside edge of piece as follows:

Rnd 30: 1ch, 28sc, 1sc on corner, 35sc, 1sc on corner, 28sc, 1sc on corner, 35sc, 1sc in first ch – 130sc.

Rnd 31: sc blo around.

Rnds 32-40: sc around.

Fasten off and weave in end.

Front

With yarn B, 36ch.

Row 1: (RS) 1sc in second ch from hook and in each ch to end, turn – 35sc.

Row 2: 1ch, 12sc in yarn B, 11sc blo in yarn A, 12sc in yarn B, turn.

Row 3: 1ch, 12sc, 11sc flo, 12sc, turn.

Rows 4-11: 1ch, 35sc, turn.

Row 12: Rep Row 2.

Rows 13-15: 1ch, 12sc in yarn B, 11sc in yarn A, 12sc in yarn B, turn.

Row 16: 1ch, 12sc, 11sc blo, 12sc, turn.

Rows 17-18: 1ch, 35sc, turn.

Row 19: 1ch, 35 sl st blo in yarn A, turn.

Row 20: 1ch, 35sc blo in yarn B, turn.

Rows 21-23: 1ch, 35sc, turn.

Row 24: 1ch, 5sc in yarn B, 25sc blo in yarn A, 5sc in yarn B, turn.

Row 25: 1ch, 5sc in yarn B, 25sc in yarn A, 5sc in yarn B, turn.

Row 26: 1ch, 5sc, 25sc blo, 5sc, turn.

Rows 27-29: 1ch, 35sc.

Change to yarn A.

Continue to work around entire outside edge of piece as follows:

Rnd 30: 1ch, 28sc, 1sc on corner, 35sc, 1sc on corner, 28sc, 1sc on corner, 35sc, 1sc in first ch – 130sc. Don't cut the yarn, you will be using it later for crocheting front and back together.

Speakers

Make two

With yarn A, make adjustable ring.

Rnd 1: 9sc in ring – 9sc.

Rnd 2: 2sc in each sc around – 18sc.

Rnd 3: [1sc, 2sc in next st] 9 times – 27sc.

Rnd 4: [2sc blo, 2sc blo in next st] 9 times – 36sc.

Fasten off, leaving tail to sew to Boom blaster.

Join yarn C in any unworked lp of Rnd 4 with sl st then sl st in each unworked lp around.

Fasten off and weave in end.

Tape

Make two

With yarn C, make adjustable ring.

Rnd 1: 8sc in ring – 8sc.

Fasten off, leaving tail to sew to Boom blaster.

Mini Speaker

Make two

With yarn A, make adjustable ring.

Rnd 1: 7sc in ring – 7sc.

Change to yarn E.

Rnd 2: Sl st around.

Fasten off, leaving tail to sew to Boom blaster.

Handle

With yarn B, make adjustable ring.

Rnd 1: 9sc in ring – 9sc.

Rnds 2-26: sc around.

Unfold two paperclips and insert in both ends, leaving end to insert in Boom blaster.

To keep paperclips tight in handle, insert fiber filling.

Assembling

Sew on the speakers and tape and embroider the details on the front with yarn A and D. Use the picture as guide.

Cardboards

Measure the inside of the back or cut a piece of paper, so it fits the bottom without folding up on the sides. Use the paper to measure on the cardboard. Cut pieces so you have enough to fill out the back. They should fill out the back piece, so you still have approx. one row left from the edge.

Place both pieces together with WS facing each other and join both pieces together as follows:

Front piece rnd 31: Sl st around 3 of the sides. Insert cardboard until it is full

Fasten off and weave in ends.



Enjoy!

Studio Manya