



**KNITTING PATTERN**

# Fair Isle Fancy

**Dining Set**

**Design: Katie Jones | Hobbii Design**

## MATERIALS

### Colourway 1:

#### Friends Cotton 8/8

Candyfloss (45) X 1 Ball  
Pink (47) X 1 Ball  
Cool Iris (72) X 1 Ball  
Sapphire (85) X 1 Ball  
Lemon (23) X 1 Ball  
Tomato (40) X 1 Ball

### Panettone

Red/Pink (05) X 1 Ball  
Aqua (19) X 1 Ball  
Or

### Colourway 2:

#### Friends Cotton 8/8

Candyfloss (45) X 2 Balls  
Pink (47) X 1 Ball  
Tomato (40) X 1 Ball  
Oatmilk (03) X 1 Ball  
Baby Pink (51) X 1 Ball

### Panettone

Red/Pink (05) X 1 Ball

Knitting needles 4mm  
Yarn needle  
Scissors

## YARN QUALITY

 **Friends Cotton 8/8**, Hobbii

100 % Cotton  
50 g / 1.75 oz = 75 m (82 yds)

 **Panettone**

87% Cotton, 7% Polyamide, 6% Metallic fiber  
50 g / 1.75 oz / 120 m (131 yds)

## QUESTIONS

If you have any questions regarding this pattern, please feel free to email us at [support@hobbii.com](mailto:support@hobbii.com). Please make sure to include the pattern's name and number.

Happy Crafting!

## SIZE

One size

## GAUGE

Worked in SS  
20 sts / 26 rows to 10 cm/4"

## MEASUREMENTS

### Placemat

Width: 36 cm (14.2") / Height: 32 cm (12.6")

### Cutlery Holder

Width: 9 cm (3.5") / Height: 25 cm (9.8")

## PATTERN INFORMATION

The Fair Isle Fancy Dining Set is a bold, fun Fair Isle design to give the fun festive touch to your Christmas Table. The pattern is aimed at Advanced beginner knitters, and is the perfect pattern to try out knitted colourwork. The pattern includes Fair Isle colour charts to follow and comes in 2 colourway options. The set makes 2 Placemats and 2 Cutlery Holders. The pattern mixes block colours and variegated yarn with a bit of sparkle for that festive feel!

## HASHTAGS FOR SOCIAL MEDIA

#hobbiidesign #hobbiifairislefancy  
#katejonesknitxhobbii #hobbiicandyland  
#katiejonesxhobbiicandyland

## BUY THE YARN HERE

<https://shop.hobbii.com/fair-isle-fancy-dining-set>



# Pattern



## ABBREVIATIONS

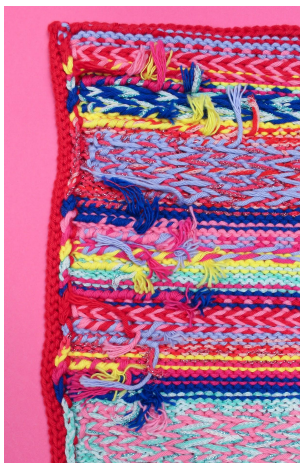
K = knit

P = Purl

SS = Stocking Stitch: [1 row knit, 1 row purl] repeat

## INFO AND TIPS

1. The pattern uses the Fair Isle technique, when working with multiple colours it's important to make sure you don't pull your tension too tight (long knitting needles help this) and twist at the back to trap the carrying yarn and make sure you don't leave long floats. Twist yarn every 3-4 stitches over the longer parts of the design in the hearts section.
2. When colour changing and using lots of different colours, you can secure the ends and starting tails by twisting every st on the wrong side at the beginning of the row, this means you don't need to secure your ends at the end of the project.
3. The Pattern uses Fair Isle Charts for the Colourwork sections, this is worked in Stocking Stitch a 1 row knit, 1 row purl repeat pattern. The Mat includes colour repeats, this is the outlined 22 stitch section on the chart.
4. The Pattern comes in 2 Colourway options, follow the charts for your chosen design and use the colour key below.





## COLOUR KEY

Colourway 1 / Pastel Rainbow

- Colour A:** Cotton 8/8 Tomato (40)
- Colour B:** Cotton 8/8 Cool Iris (72)
- Colour C:** Cotton 8/8 Candyfloss (45)
- Colour D:** Cotton 8/8 Lemon (23)
- Colour E:** Cotton 8/8 Pink (47)
- Colour F:** Panettone Aqua (19)
- Colour G:** Cotton 8/8 Sapphire (85)
- Colour H:** Panettone Red/Pink (05)

## COLOUR KEY

Colourway 2 / Pink Red

- Colour A:** Cotton 8/8 Candyfloss (45)
- Colour B:** Cotton 8/8 Baby Pink (51)
- Colour C:** Cotton 8/8 Tomato (40)
- Colour D:** Cotton 8/8 Oatmilk (03)
- Colour E:** Cotton 8/8 Pink (47)
- Colour F:** Panettone Red/Pink (05)

## PLACE MAT

Colourway 1: Make 1 in each colour option

Colourway 2: Make 2

**Cast on:** Cable Cast on 68 sts in Colour A

**Row 1:** K

**Row 2:** K

**Row 3:** Follow Fair Isle chart working stocking stitch starting on a Purl Row, work 3 stitch repeats of stitches [1-22]

**Row 79:** In Colour A, P

**Row 80:** P

**Cast Off:** Cast off Knitwise on the wrong side.





### Mat Edge Borders

Add the edge border by picking up stitches along the sides. Pick up stitches 1 stitch in from the edge.

Working in Colour A, [Pick up 1 st every row for 4 rows, miss 1 row] repeat along the edge.

64 Sts in Total

**Row 1:** K

**Row 2:** K

**Row 3:** K

Cast Off on the wrong side.

Repeat on the other side.

### CUTLERY HOLDER

**Colourway 1:** Make 1 in each colour option. Version 1 works rows 3-68 in Colour F/ Version 2 works rows 3-68 in Colour H

**Colourway 2:** Make 2

**Cast on:** Cable Cast on 15 sts in Colour A

**Row 1:** K

**Row 2:** K

**Rows 3-68:** Starting on a purl row work stocking stitch in Colour F/H for Colourway 1 or Colour F for Colourway 2, for 66 rows

**Row 69:** In Colour A K

**Row 70:** P

**Row 71:** P

**Row 72:** K

**Row 73:** P

**Row 74:** Follow Fair Isle chart working stocking stitch starting on a Purl Row

**Row 101-103:** K 3 rows

Cast Off on the wrong side.

### Cutlery Holder Join and border



To join the sides of your Cutlery holder to create the pouch, fold the Fair Isle section back, make sure the right side of the Fair Isle is facing and fold back onto the right side of the right side of the background stocking stitch. Fold back so the wrong side of Colour A mimics the border along the bottom edge.

Starting on the side that works from the bottom of the holder first, join by picking up the stitches through both layers .

Pick up stitches 1 stitch from the edge working in Colour A.

Follow spacing [Pick up 1 st every row for 4 rows, miss 1 row] repeat along the edge until Fair Isle border, approximately 27 Sts. Continue picking up along the background edge



following spacing [Pick up 1 st every row for 3 rows, miss 1 row] repeat along edge approximately 27 Sts. Total of 54 sts.

**Row 1:** K

**Row 2:** K

**Row 3:** K

Cast Off on the wrong side.

Repeat on the other side working the first pick up row in the reverse spacing order.

Picking up along the background edge following spacing [Pick up 1 st every row for 3 rows, miss 1 row] repeat along edge approximately 27 Sts, follow spacing [Pick up 1 st every row for 4 rows, miss 1 row] repeat along the Fair Isle edge, approximately 27 Sts. Total of 54 sts.

**Row 1:** K

**Row 2:** K

**Row 3:** K

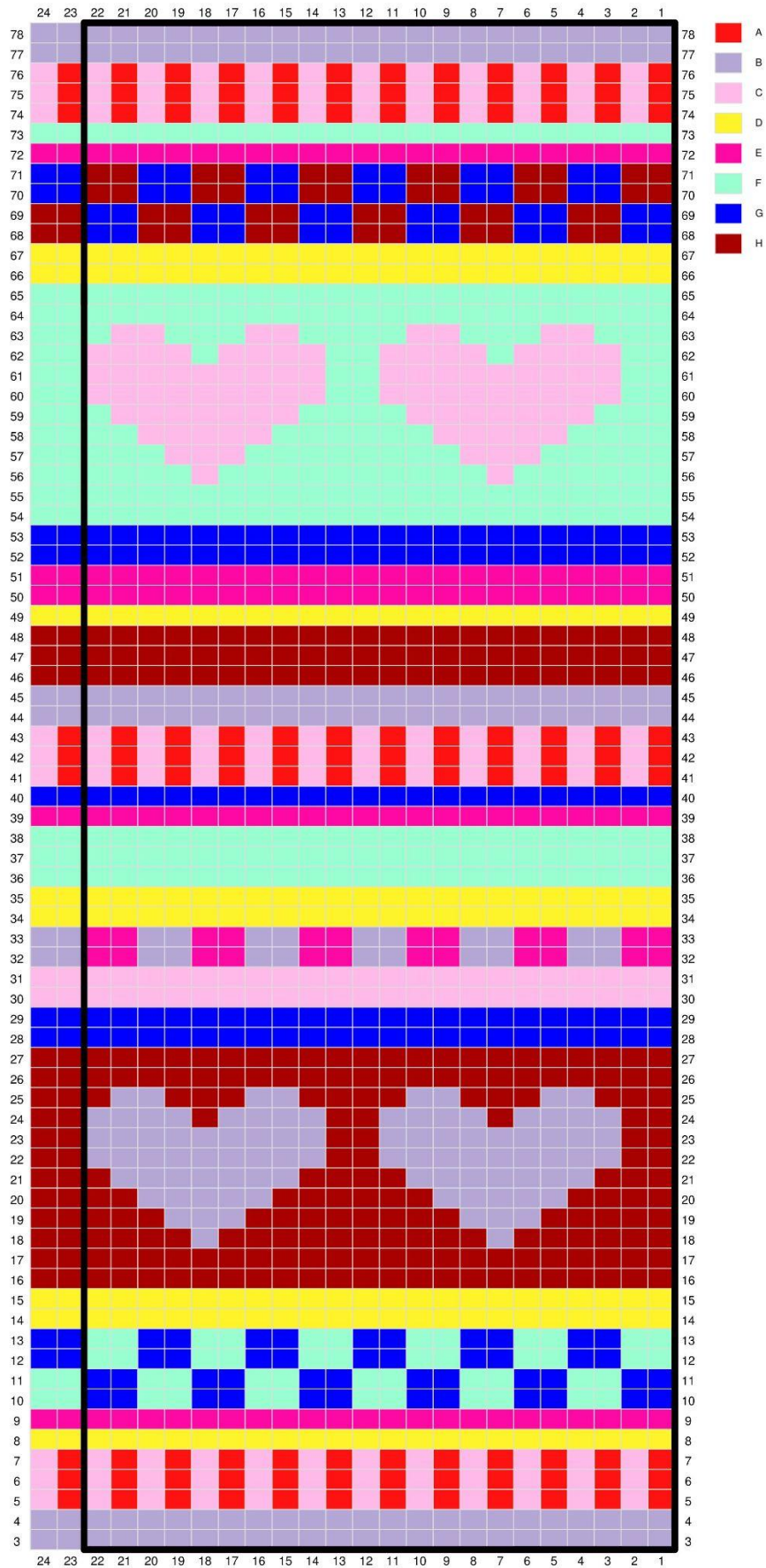
Cast Off on the wrong side.

Sew in any remaining ends

**Block:**

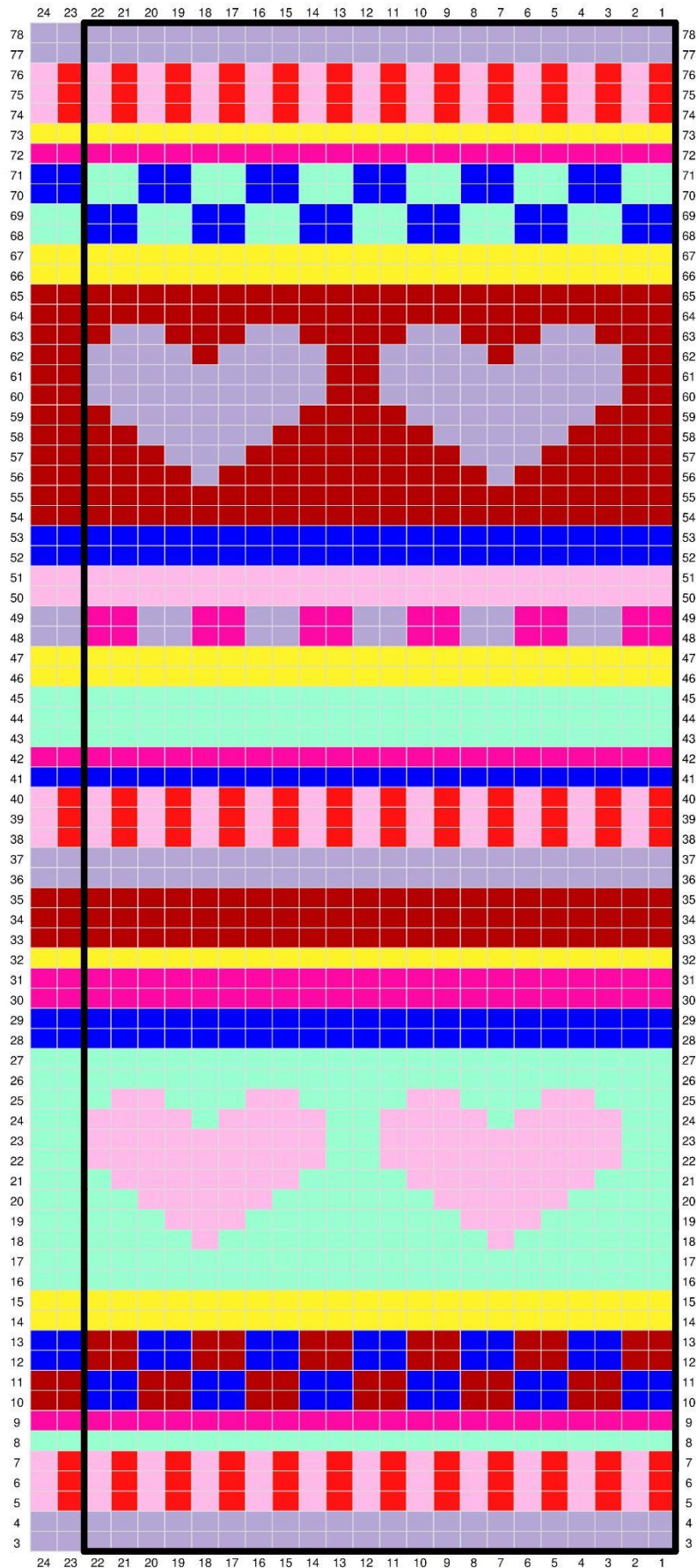
Block on the reverse of pieces using a steam iron 5 cm ( 2") above the piece, pin into shape when damp and leave to dry, so the pieces hold their shape.

### COLOURWAY 1: MAT 1

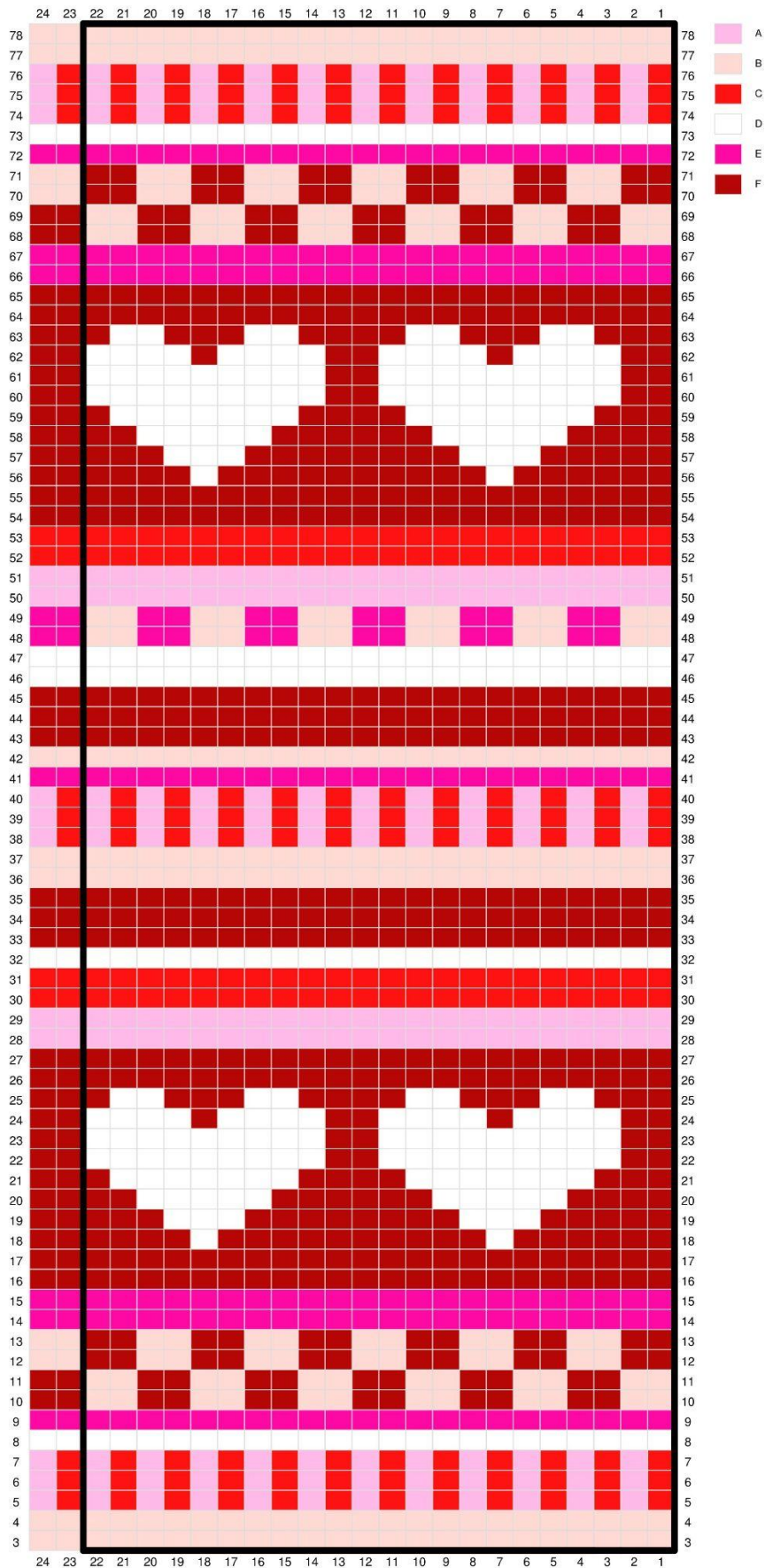




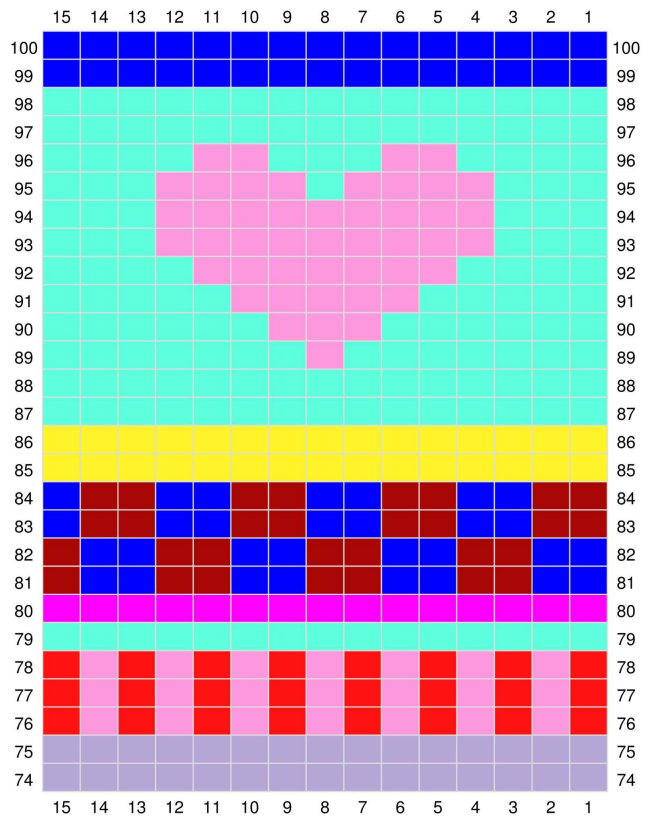
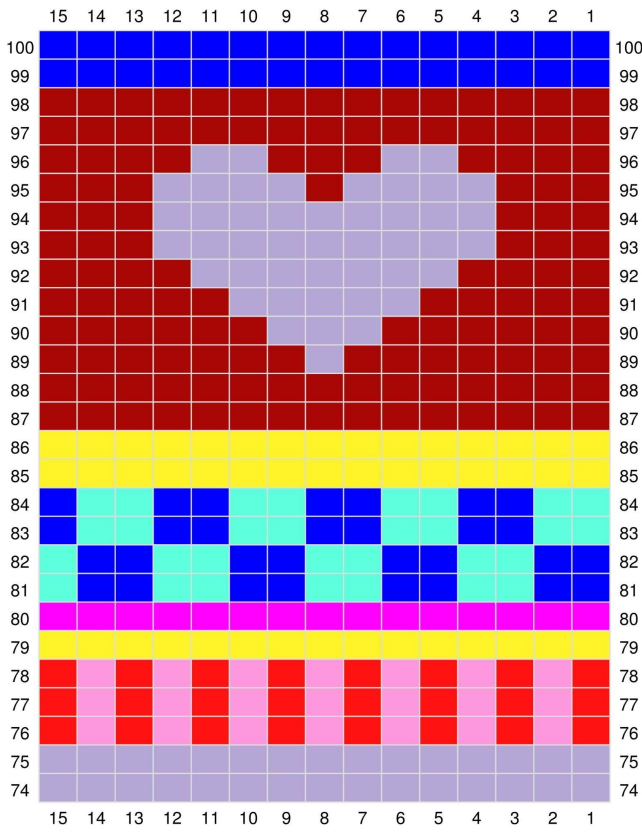
### COLOURWAY 1: MAT 2



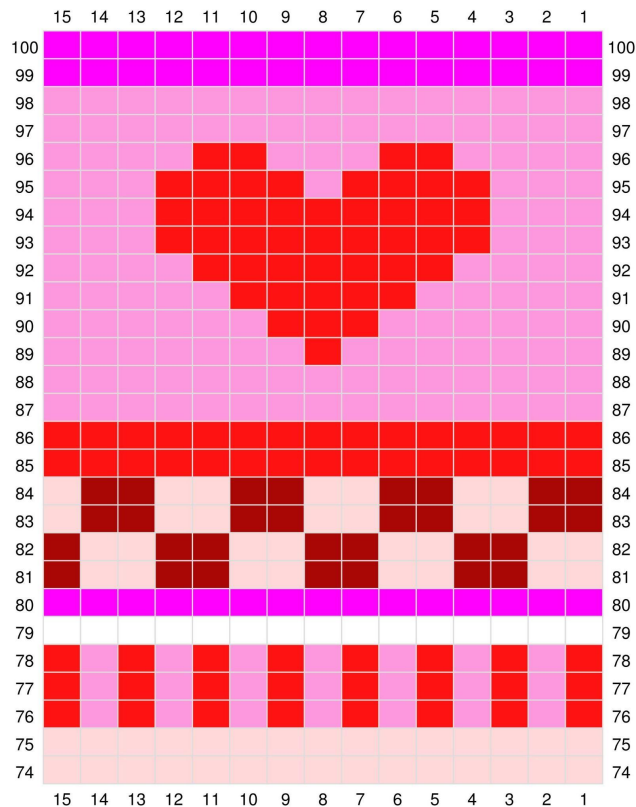
## COLOURWAY 2: MAT- MAKE 2



### Colourway 1: Cutlery Holders



### Colourway 2: Cutlery Holder - Make 2





Enjoy!

LOVE  
KATIE  
X O X

@Katiejonesknit

Why not check out the other designs in the Katie Jones Candyland Collection!

