



KNITTING PATTERN

Martha Silk

Blouse with lace pattern

Design: Sys Fredens | Hobbii Design



MATERIALS

5 (5, 6, 7, 7, 8) skeins of Friends Kid Silk, col 38

Circular needles 80 cm/ 3 mm and 3.5 mm (US 4)

double pointed needles 3 mm and 3.5 mm (US 4)

Stitch markers

Stitch holders

YARN QUALITY

 **Friends Kid Silk**, Hobbii

72% Mohair, 25% Silk 30% Polyamide

25 g (0.9 oz) = 200 m (218 yds)

GAUGE

24 sts and 38 rows = 10 cm (4")

worked in lace pattern with needles 3.5 mm (US 4)

ABBREVIATIONS

CO = cast on

BO = bind off

St(s) = stitch(es)

K2tog = knit 2 together

RS = right side

WS = wrong side

SIZE

S (M, L, XL, 2XL, 3XL)

MEASUREMENTS

Width: approx. 42 (46, 50, 54, 58, 63) cm/16.5 (18, 19.7, 21.3, 23, 24) inches

Length: 53 (54, 55, 56, 57, 58) cm/21 (21.25, 21.65, 22, 22.4, 22.8) inches

PATTERN INFORMATION

The main body is worked in the round until you reach the armholes. The sleeves can be worked with circular needles using magic loop or with double pointed needles.

The whole blouse features a lace pattern worked according to the chart.

All edges are folded and sewn from the WS to create a nice, pointed edge.

TECHNICAL VIDEOS

[Magic Loop](#)

HASHTAGS FOR SOCIAL MEDIA

#hobbiidesign #hobbiimarthasilk

#hobbiicolorcrush

BUY THE YARN HERE

<https://shop.hobbii.com/martha-silk-blouse-with-lace-pattern>

QUESTIONS

If you have any questions regarding this pattern, please feel free to email us at

support@hobbii.com

Please make sure to include the pattern's name and number.

Happy Crafting!

Pattern



EDGE

With circular needles 3 mm, loosely CO 200 (220, 240, 260, 280, 300) sts and join to work in the round.

Work 1,5 cm (0.6") of stockinette stitch.

Next round: *Yarn over, k2tog* until end.

Work 1,5 cm (0.6") of stockinette stitch, knitting all the yarn overs.

BODY

Change to circular needles 3.5 mm (US 4) and work 2 rounds of stockinette stitch.

Continue working in the round, while following the chart on the last page, until work measures 34 cm (13.4").

Finnish with round 9 of the chart.

Mark the side seams

Place marker at the beginning of your round and halfway through = 100 (110, 120, 130, 140, 150) sts on each half.

Bind off for armhole

Knit from (round 10 of the chart) the beginning of the round until 6 (9, 13, 17, 20, 23) sts from the marker, BO 12 (18, 26, 34, 40, 46) sts, knit until 6 (9, 13, 17, 20, 23) sts from the marker, BO 12 (18, 26, 34, 40, 46) sts = 88 (92, 94, 96, 100, 104) sts on each part.

BACK PANEL

Continue working back and forth with the circular needles, letting the remaining sts rest.

Work 2 sts of stockinette st in each side and continue working the chart over the remaining sts until work measures 51 (52, 53, 54, 55, 56) cm/ 20 (20.5, 21, 21.25, 21.65, 22) inches. End with a wrong side row.

RIGHT SHOULDER

Continue working in pattern with 2 sts of stockinette st on the side of the sleeve.

1. row, RS: Knit 21 (23, 23, 24, 25, 27) sts, turn and let the remaining sts rest.
2. row, WS: BO 2 sts and knit until end of row.
3. row, RS: Work in pattern.
4. row, WS: BO 2 sts and knit until end of row.
5. row, RS: Work in pattern.
6. row, WS: BO 2 sts and knit until end of row.
7. row, RS: Loosely BO = 15 (17, 17, 18, 19, 21) sts.

NECK

RS: Loosely BO 46 (46, 48, 48, 50, 50) sts and work in pattern until end of row.

LEFT SHOULDER

Continue working in pattern with 2 sts of stockinette st on the side of the sleeve.

1. row, WS: purl.
2. row, RS: BO 2 sts and knit until end of row.
3. row, WS: purl.
4. row, RS: BO 2 sts and knit until end of row.
5. row, WS: purl.
6. row, RS: BO 2 sts and knit until end of row.
7. row, WS: purl.
8. row, RS: Loosely BO = 15 (17, 17, 18, 19, 21) sts.

FRONT PANEL

Is worked the same way as the back panel until work measures 44 (45, 46, 47, 48, 49) cm/17 (17.7, 18, 18.5, 18.9, 19.3) inches. End with a WS row.

LEFT SHOULDER

Continue working in pattern with 2 sts of stockinette st on the side of the sleeve.

1. row, RS: knit 30 (32, 32, 33, 34, 36) sts, turn and let the remaining sts rest.
 2. row, WS: BO 4 sts and knit until end of row.
 3. row, RS: Work in pattern.
 4. row, WS: BO 3 sts and knit until end of row.
 5. row, RS: Work in pattern.
 6. row, WS: BO 2 sts and knit until end of row.
 7. row, RS: Work in pattern.
 8. row, WS: BO 2 sts and knit until end of row.
 9. row, RS: Work in pattern.
- Now BO 1 sts at the beginning of each WS row until 15 (17, 17, 18, 19, 21) sts remain.

Work even until work measures 53 (54, 55, 56, 57, 58) cm/21 (21.25, 21.65, 22, 22.4, 22.8) inches.

BO loosely.

NECKLINE

RS: Loosely BO 28 (28, 30, 30, 32, 32) sts and work in pattern until end of row.

RIGHT SHOULDER

Continue working in pattern with 2 sts of stockinette st on the side of the sleeve.

1. row, WS: purl.

2. row, RS: BO 4 sts and knit until end of row.

3. row, WS: purl.

4. row, RS: BO 3 sts and knit until end of row.

5. row, WS: purl.

6. row, RS: BO 2 sts and knit until end of row.

7. row, WS: purl.

8. row, RS: BO 2 sts and knit until end of row.

9. row, WS: purl.

Now BO 1 sts at the beginning of each RS row until 15 (17, 17, 18, 19, 21) sts remain.

Work even until work measures 53 (54, 55, 56, 57, 58) cm/21 (21.25, 21.65, 22, 22.4, 22.8) inches.

BO loosely.

SLEEVES

EDGE

Loosely CO 58 (60, 60, 62, 62, 64) sts on circular or double pointed needles 3 mm, using magic loop for circular needles.

Work 1,5 cm (0.6") of stockinette stitch.

Next round: *Yarn over, k2tog* until end.

Work 1,5 cm (0.6") of stockinette stitch, knitting all the yarn overs.

SLEEVE

Change to needles 3.5 mm (US 4)

Work 3 rounds of stockinette stitch. Place marker at beginning of round.

Continue working round according to the chart, the middle stitch on the sleeve is the 5th st, at the same time increasing 1 sts on each side of the marker like this:

Knit until 1 st before marker, make 1 (pick up and knit the strand tbl), knit 2, make 1= 2 sts increased.

Continue increasing every 6 rounds until there are 86 (92, 96, 100, 106, 110) sts.

Work the new sts into the pattern and work the 2 sts between the increases in stockinette stitch.

Continue until work measures approx. 39,5 (40, 40,5, 41, 41,5, 42,5) cm/15.6 (15.7, 15.9, 16.1, 16.3, 16.7) inches.

Work back and forth on circular needle until work measures approx. 42 (44, 46, 48, 50, 52) cm/16.5 (17.3, 18.1, 18.9, 19.7, 20.5) inches.

SLEEVE CAP

BO 5 sts at the beginning of each row (slip the first st) 7 (7, 8, 8, 9, 9) times in each side = 16 (22, 16, 20, 16, 20) sts. BO loosely.

Work the other sleeve the same way.

FINISHING

NECKLINE

Seam shoulders together.

Pick up and knit approx. 140 (140, 144, 144, 148, 148) sts along the neckline with circular needles 3 mm (US 4) and work 1 cm (0.4") of stockinette stitch.

Next round: *Yarn over, k2tog* until end.

Work 1,5 cm (0.6") of stockinette stitch, knitting all the yarn overs.

Fold the edge and sew on the WS.

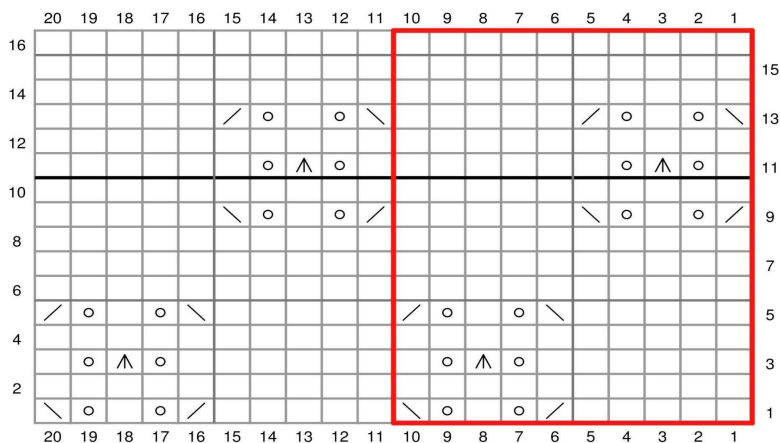
SLEEVES

Sew the sleeves onto the blouse by sewing the top 3-5 cm (1"-2") of the sleeves' seam together with the bound off sts on the blouse and sewing the bound off sts of the sleeve to the armhole of the blouse, while holding the middle 5 cm of the sleeve together to create a puff effect.

EDGES

Fold the edge of the blouse and sew from the WS. Do the same on the sleeves.

CHART



- knit on RS, purl on WS
- k2tog
- k2tog tbl
- k3tog: slip 2 sts knitwise, knit 1, pull slipped sts over
- yarn over