



CROCHET PATTERN

Waterflow

Sweater

Design: [Giulia Introzzi @zullacrocheted](#) | Hobbii Design




MATERIALS

7 (8, 9, 9) skeins of Pearly Haze, Turkish Blue (88)

Crochet hook 5 mm (US H-8)
Scissor
Darning needle
Tape measure

YARN QUALITY

 **Pearly Haze**, Hobbii
73% Viscose, 27% Wool
50 g / 1.8 oz = 110 m / 120 yds

GAUGE

Blocked gauge 10 x 10 cm = 11 sts x 13 rows.

Check info and tips section for more gauge info.

ABBREVIATIONS

st(s)= stitch(es)
ch= chain
sk = skip
slst = slip stitch
sc = single crochet
fsc = foundation single crochet

SIZE

S (M, L, XL)

MEASUREMENTS

Measurements with 10 cm positive ease included:
Circumference: 90 (100, 110, 120) cm / 35" (39.4", 43.3", 47.2")

PATTERN INFORMATION

A sweater that feels liquid on the skin, just like water. The waterflow sweater is built in two main panels worked flat in single crochet and sewn together at the very end. A flattering shoulder opening and an oversized turtleneck give that extra stylish vibe everyone needs.

HASHTAGS FOR SOCIAL MEDIA

#hobbiidesign #hobbiiwaterflow
#hobbiielements

BUY THE YARN HERE

<https://shop.hobbii.com/waterflow-sweater>



QUESTIONS

If you have any questions regarding this pattern, please feel free to email us at support@hobbii.com
Please make sure to include the pattern's name and number.

Happy Crafting!

Pattern



INFO AND TIPS

With a 5 mm (US H-8) hook, work up gauge as follows:

- Ch 40, ch 1 more and turn
- Sc in second ch from hook and sc in each ch till end of row (40 sc)
- Ch1 & turn, sc in every st till end of row (40 sc)
- Repeat previous row for another 38 rows and fasten off.
- Block gauge.
- Check measurements in the center of gauge: you should get 11 sts x 13 rows for a 10cm x 10cm square

If you don't match gauge, change your hook size to the one that enables you to correctly meet gauge.

FRONT PANEL

FP 1	Ch 44 (50, 55, 61), Ch1 more & turn, sc in second ch from hook and in every st till end of row. 44 (50, 55, 61)
FP 2-4	Ch1 & turn. Sc in every st till end of row. 44 (50, 55, 61)
FP 5	Ch1 & turn. 2 sc in first st, sc in every st till st before the last. 2sc in last st. 46 (52, 57, 63)
FP 6-9	Ch1 & turn. Sc in every st till end of row. 46 (52, 57, 63)
FP 10	Ch1 & turn. 2 sc in first st, sc in every st till st before the last. 2sc in last st. 48 (54, 59, 65)
FP 11-14	Ch1 & turn. Sc in every st till end of row. 48 (54, 59, 65)
FP 15	Ch1 & turn. 2 sc in first st, sc in every st till st before the last. 2sc in last st. 50 (56, 61, 67)
FP 16-19	Ch1 & turn. Sc in every st till end of row. 50 (56, 61, 67)

- FP 20 Ch1 & turn. 2 sc in first st, sc in every st till st before the last. 2sc in last st. 52 (58, 63, 69)
- FP 21-24 Ch1 & turn. Sc in every st till end of row. 52 (58, 63, 69)
- FP 25 Ch1 & turn. 2 sc in first st, sc in every st till st before the last. 2sc in last st. 54 (60, 65, 71)
- FP 26-29 Ch1 & turn. Sc in every st till end of row. 54 (60, 65, 71)
- FP 30 Ch1 & turn. 2 sc in first st, sc in every st till st before the last. 2sc in last st. 56 (62, 67, 73)
- FP 31-34 Ch1 & turn. Sc in every st till end of row. 56 (62, 67, 73)
- FP 35 Ch 20, ch1 more & turn, sc in second ch from hook and in every st till end of row, fsc 20. 96 (102, 107, 113)
- FP 36 Ch1 & turn. 2 sc in first st, sc in every st till st before the last. 2sc in last st. 98 (104, 109, 115)

Repeat FP 36 for another 17 times until FP 53 with stitch count 132 (138, 143, 149).

- FP 54 Ch1 & turn. Sc in every st till end of row. 132 (138, 143, 149).

Repeat FP 54 for another 9 times until FP 63 and fasten off.

- FP 64 Attach yarn on the 39th st. Ch1, sc in following 28 (31, 34, 36). sts.
- FP 65 Ch1 & turn, sk first st, slst in next st, sc in following 21 (24, 27, 29) sts.
- FP 66 Ch1 & turn, sk first st, slst in next 4 sts, sc in following 14 (17, 20, 22).
- FP 67 Ch1 & turn, sk first st, sl st in next, sc in following 7 (10, 13, 15) sts. Fasten off.

BACK PANEL

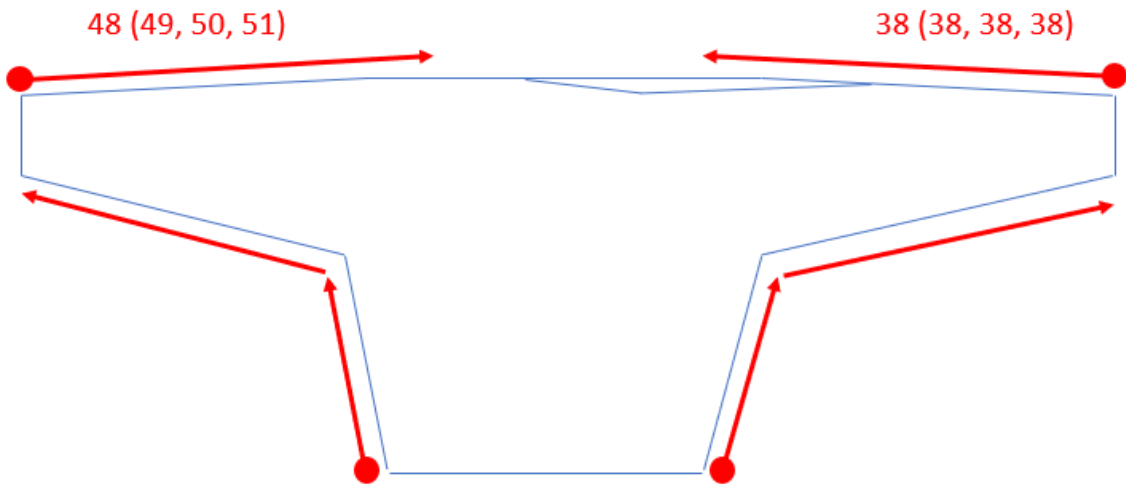
- BP 1 Ch 44 (50, 55, 61), Ch1 more & turn, sc in second ch from hook and in every st till end of row. 44 (50, 55, 61)
- BP 2-4 Ch1 & turn. Sc in every st till end of row. 44 (50, 55, 61)
- BP 5 Ch1 & turn. 2 sc in first st, sc in every st till st before the last. 2sc in last st. 46 (52, 57, 63)
- BP 6-9 Ch1 & turn. Sc in every st till end of row. 46 (52, 57, 63)

- BP 10 Ch1 & turn. 2 sc in first st, sc in every st till st before the last. 2sc in last st. 48 (54, 59, 65)
- BP 11-14 Ch1 & turn. Sc in every st till end of row. 48 (54, 59, 65)
- BP 15 Ch1 & turn. 2 sc in first st, sc in every st till st before the last. 2sc in last st. 50 (56, 61, 67)
- BP 16-19 Ch1 & turn. Sc in every st till end of row. 50 (56, 61, 67)
- BP 20 Ch1 & turn. 2 sc in first st, sc in every st till st before the last. 2sc in last st. 52 (58, 63, 69)
- BP 21-24 Ch1 & turn. Sc in every st till end of row. 52 (58, 63, 69)
- BP 25 Ch1 & turn. 2 sc in first st, sc in every st till st before the last. 2sc in last st. 54 (60, 65, 71)
- BP 26-29 Ch1 & turn. Sc in every st till end of row. 54 (60, 65, 71)
- BP 30 Ch1 & turn. 2 sc in first st, sc in every st till st before the last. 2sc in last st. 56 (62, 67, 73)
- BP 31-34 Ch1 & turn. Sc in every st till end of row. 56 (62, 67, 73)
- BP 35 Ch 20, ch1 more & turn, sc in second ch from hook and in every st till end of row, fsc 20. 96 (102, 107, 113)
- BP 36 Ch1 & turn. 2 sc in first st, sc in every st till st before the last. 2sc in last st. 98 (104, 109, 115)
- Repeat BP 36 for another 17 times until BP 53 with stitch count 132 (138, 143, 149).
- BP 54 Ch1 & turn. Sc in every st till end of row. 132 (138, 143, 149).
- Repeat BP 54 for another 9 times until BP 63 and fasten off.
- BP 64 Attach yarn on the 39th st. Ch1, sc in following 56 (62, 67, 73).
- BP 65 Ch1 & turn, sk first st, slst in next 4 sts, sc in following 46 (52, 57, 63).
- BP 66 Ch1 & turn, sk first st, slst in next 4 sts, sc in following 36 (42, 47, 53).
- BP 67 Ch1 & turn, sk first st, slst in next 4 sts, sc in following 26 (32, 37, 43). Fasten off.

BODY ASSEMBLY

Before assembling the two panels, it's important to block them to make them meet the gauge.

Once done, lay down your panels with front sides facing each other and attach via sc the sides as the picture demonstrates.



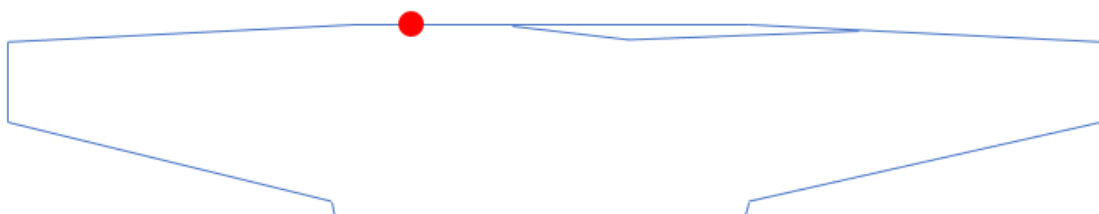
● = Attach yarn here

When joining the upper side of the sleeves, attach yarn on the right wrist and join 48 (49, 50, 51) sts only, leaving the rest unworked. On the left side, only join 38 sts. Once done you should be left with a neck opening of 46 (51, 55, 60) unworked sts.

TURTLE NECK

Lay down your sweater, right side facing out, attach yarn on the right shoulder, right where your neck opening start (= last stitch you made to join front and back panel).

Consider the back panel and front panel as a one piece: you will be working in a circle going from back to front panel (or vice versa) on every row.



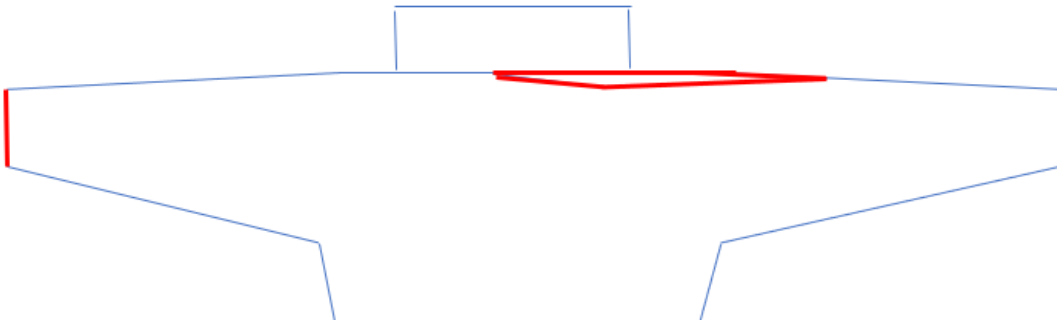
TN 1 Ch 1, sc 18 (20, 21, 23), 15 fsc, sk 28 (31, 34, 37), sc in last 18 (20, 21, 23) remaining sts. Slst to first sc of the row. 51 (55, 57, 61)

TN 2 Ch 1 & turn, sc in every st till end of the row, slst to first st of the row. 51 (55, 57, 61)

TN 3-13 Repeat TN 2. 51 (55, 57, 61). Fasten off.

FINISHING

Working on the right side, place slst all around the neck/shoulder opening. Slst to first st. Do the same thing on the wrist opening.



Block your finished sweater.
Weave in the ends.

Final sweater dimensions

	S	M	L	XL
Wingspan width (cm)	120	125.5	130	135.5
Body length (shoulder to waist) (cm)	52	52	52	52

Enjoy your new sweater!

Giulia