



KNITTING PATTERN

Audrey

Children's Dress

Design: Yuha Knitting | Hobbii Design



MATERIALS

Color A: 4 (4) 5 (5) 6 (6) skeins of Highland Wool col. 36 - Heather

Color B: 1 skein of Highland Wool col. 03 - Champagne

Circular needle 3.5 mm (US 4), 40 cm (16")

Double-pointed needles 2.5 mm (US 4)

Stitch markers

Tapestry needle

Stitch wire

YARN QUALITY

 **Highland Wool**, Hobbii

100 % Wool

50 g (1.8 oz) = 175 m (191 yds)

GAUGE

10 cm x 10 cm (4" x 4") = 22 sts x 30 rows

ABBREVIATIONS

BOR = Beginning of round

Sts = stitches

SSK = slip slip knit

k2tog = knit 2 together

SIZE

2 (4) 6 (8) 10 (12) years

MEASUREMENTS

Circumference: 60 (63) 65 (70) 73 (75) cm /
23.6" (24.8") 25.6" (27.5") 28.7" (29.5")

PATTERN INFORMATION

This sweet children's dress is worked bottom up in the round to the underarm, the sleeves are worked separately, then all parts are joined together on one needle to continue the yoke up to the neck.

The pattern is made for the skilled knitter, but includes 5 diagrams for the pattern sections making it easy to read and follow the instructions. This makes it a great project for the knitter who has little or no experience with pattern knit.

HASHTAGS FOR SOCIAL MEDIA

#hobbiidesign #hobbiiaudrey

BUY THE YARN HERE

<https://shop.hobbii.com/audrey-children-s-dress>



QUESTIONS

If you have any questions regarding this pattern, please feel free to email us at

support@hobbii.com

Please make sure to include the pattern's name and number.

Happy Crafting!

Pattern



SKIRT

With **Color A** and 3.5 mm needles cast on 180 (198) 216 (234) 252 (270) sts, join the round.
Work **CHART 3**.

When pattern is completed, work 2 rows of **Color A**. Work **CHART 4**, then 2 rows of **Color A**.
Counting from this place, decrease evenly 12 (15) 18 (20) 23 (26) sts every 14 (16) 19 (22) 28 (32) rows, 4 times = 132 (138) 144 (154) 160 (166) sts.

Keep knitting until you reach skirt length 37 (40) 45 (50) 54 (63) cm / 14.6" (15.7") 17.7" (19.7") 21.2" (24.8"); or desired skirt length.

When finished, place 6 (8) 8 (10) 10 (10) sts after BOR on stitch holder or waste yarn for underarm, count next 60 (61) 64 (67) 70 (73) sts, and place 6 (8) 8 (10) 10 (10) sts of the body on stitch holder or waste yarn for underarm.

SLEEVES

With **Color A** and 2.5 mm needles cast on 32 (32) 34 (36) 40 (42) sts, place a BOR marker and join the work in the round.

Work 8 (10) 10 (12) 12 (12) rows in stockinette stitch. Join the next row with the first one to achieve a folded cuff.

Switch to 3.5 mm needles. Work 1 knit row, next row do increases in every stitch = 64 (64) 68 (72) 80 (84) sts. Knit 5 rows with **Color A**, then work **CHART 1**.

When **CHART 1** is completed, knit 1 row with **Color A**, at the same time adjust the number of sts evenly to 66 (66) 66 (72) 78 (84) sts. Work **CHART 2**.

Keep working the sleeve with **Color A** until the length 24 (27) 31 (33) 36 (38) cm / 9.4" (10.6") 12.2" (13") 14.2" (15") or desired sleeve length.

Next row decrease evenly 18 (14) 12 (14) 14 (14) sts (exclude 3 (4) 4 (5) 5 (5) before and after BOR from decreasing) = 48 (52) 54 (58) 64 (70) sts.

When finished, cut yarn, place 3 (4) 4 (5) 5 (5) sts before BOR and 3 (4) 4 (5) 5 (5) sts after BOR on stitch holder or waste yarn, and keep the remaining sleeve sts on a spare needle or another waste yarn.

42 (44) 46 (48) 54 (60) sts remain on sleeve.

Knit second sleeve as first.

YOKE

Join body and both sleeves: BOR marker at the same place. Place sts of one sleeve on needle and knit onto body needle, knit across sts of front, knit across other sleeve, then knit across sts of back. The total amount: 204 (210) 220 (230) 248 (266)sts.

Work 5 knitting rows, then fold them and join next row with the first row of these 5, lifting the loops from the wrong side.

Decrease evenly 27 (28) 29 (30) 32 (35) sts, 2 times every 10 (11) 12 (14) 15 (16) row = 177 (182) 191 (200) 216 (231) = 150 (154) 162 (170) 184 (196)sts.

Decrease evenly 27 (28) 29 (30) 32 (35) sts, 2 times every 7 (7) 8 (9) 10 (11) row = 123 (126) 133 (140) 152 (161) = 96 (98) 104 (110) 120 (126)sts.

Find the middle of the back side, place marker = BOR. Mark 5 sts on both sides from the BOR. Keep knitting until BOR. Here we start knitting back and forth to form an opening on the back.

Work 3 stockinette rows. (slip 1 stitch, k4, knit on right side (or purl on wrong side) until last 5 sts, k4, 1 sts purlwise).

Then 1 slip sts, k4, **CHART 5**, k4, 1 purlwise).

Work 2 (2) 2 (4) 4 (4) stockinette rows.

Decrease evenly 27 (28) 29 (30) 32 (35) sts (exclude 5sts from beginning and end of the row) = 69 (70) 75 (80) 88 (91) sts. Set aside.

I-CORD

Knit 20cm (7-8") of I-cord (4sts), join the neck stitches.

Attach the I-cord to the neck edge, keep knitting I-cord for 20cm (7-8").

ASSEMBLING

Graft underarm seams together using a tapestry needle, weave all thread ends.

Rinse in lukewarm water and dry off on a flat surface.

Enjoy!

Nazilia Zemdikhanova

CHART 1

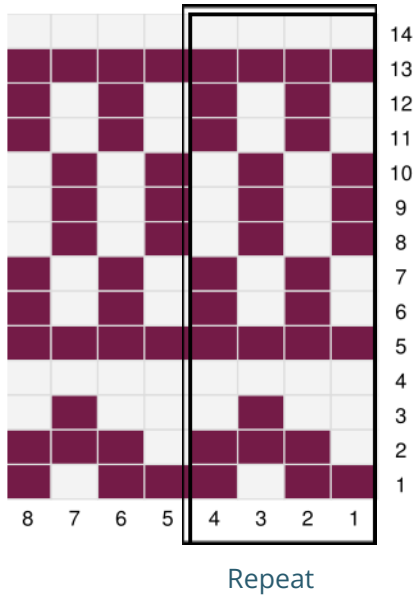


CHART 2

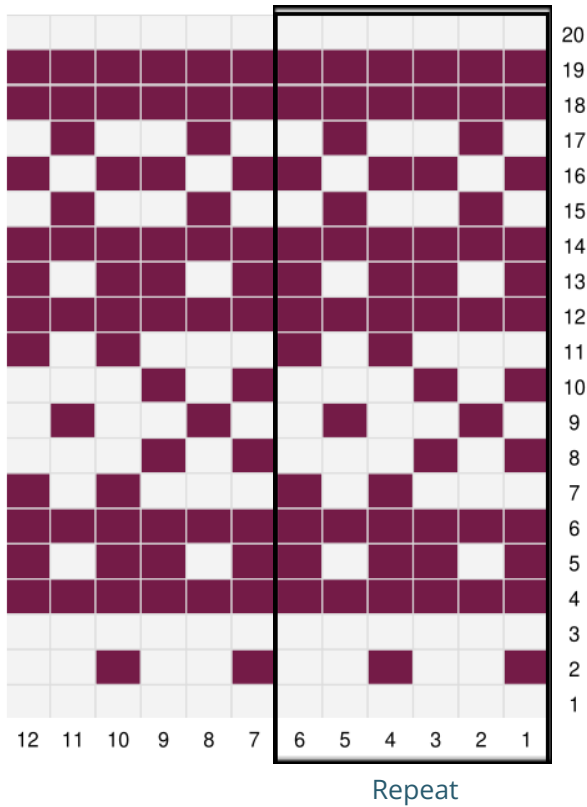
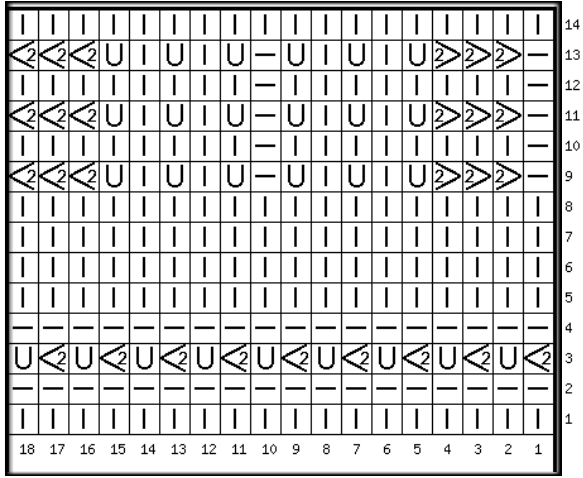


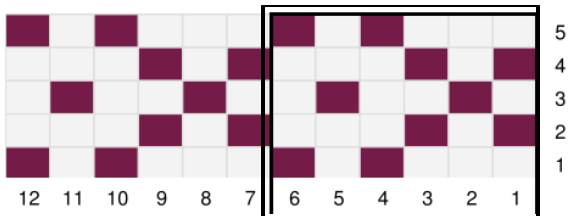
CHART 3



Repeat

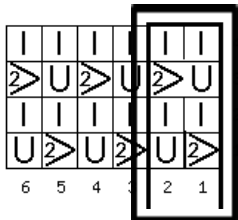
- | - knit stitch
- ←2- SSK
- U - yarn over
- | - purl stitch
- 2- k2tog

CHART 4



Repeat

CHART 5



Repeat

- | Knit stitch
- 2- k2tog
- U yarn over