



**CROCHET PATTERN**

# Oak

## Bandana

**Design: KreaBossen | Hobbii Design**





## MATERIALS

1 skein of Soft Alpaca Lace, Cappuccino (43)  
1 skein of Alpaca Blaze, Nougat (04)

Crochet hook 4.0 mm

## YARN QUALITY

 **Soft Alpaca Lace**, Hobbii  
100% Alpaca  
50 g (1.75 oz) = 400 m (437 yds)

 **Alpaca Blaze**, Hobbii  
40% Acrylic, 30% Alpaca, 30% Polyamide  
25 g (0.9 oz) = 225 m (246 yds)

## GAUGE

10 cm x 10 cm (4" x 4") = 20 sts x 12 rows

## ABBREVIATIONS

Ch = chain  
R = row  
St(s) = stitch(es)  
Sl st = slip stitch  
Ch-sp = chain space  
Hdc = half double crochet  
Dc = double crochet  
Tr = treble crochet  
Bp-hdc = back post half double crochet  
Bp-dc = back post double crochet  
Bp-tr = back post treble crochet  
fp-hdc = front post half double crochet  
fp-dc = front post double crochet  
fp-tr = front post treble crochet

## SIZE

One size

## MEASUREMENTS

Width: 80 cm/31.5 inches  
Height: 25 cm/9.8 inches

## PATTERN INFORMATION

This bandana is a great accessory to wear around your neck or head for a personal look.

The bandana is worked in a triangle and finished with a denser edging.

## HASHTAGS FOR SOCIAL MEDIA

#hobbiiok  
#hobbiidesign

## BUY THE YARN HERE

<https://shop.hobbii.com/oak-bandana>



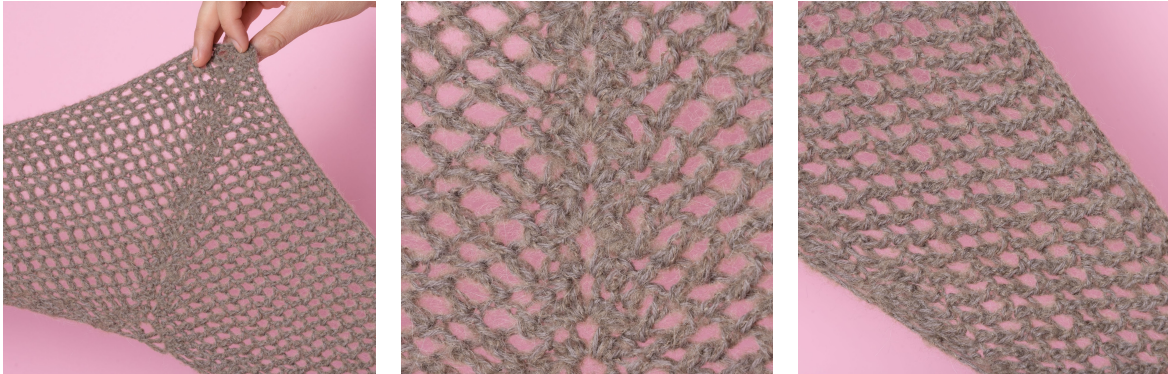
## QUESTIONS

If you have any questions regarding this pattern, please feel free to email us at [support@hobbii.com](mailto:support@hobbii.com)

Please make sure to include the pattern's name and number.

Happy Crafting!

# Pattern



## TIPS AND INFO

Oak bandana is made in one triangular piece. You will start in the middle and work towards the tips. Once the triangle is finished, a tighter front/back post pattern will be worked along two edges. The bandana is worked with two strands of yarn held together: One strand of Soft Alpaca Lace and one strand of Alpaca Blaze.

The bandana itself is worked primarily in dc and front/back post double crochet divided by a ch-1 to create a neat lace pattern. Double crochets will be replaced by half double crochets for the middle part and by treble crochets for the tips. This helps shape the bandana. By working alternately one row of front/back post double crochet and one row of regular double crochet divided by ch-1, the bandana will have a different look on each side.

The edging is worked to create a more structured pattern and is finished with a combination of slip stitches and chains.

## BANDANA

You will work back and forth using two strands held together: One strand of Soft Alpaca Lace and one strand of Alpaca Blaze.

All rows begin with a ch-5, which counts as 1 tr and ch-1.

After row 3 the number of repeats between tip and center is increased by 3 every row.

**Row 1:** Start with a magic ring. In the ring: ch 5, 2 tr, ch 2, 2 tr, ch 1, 1 tr.

**Row 2:** ch 5, 2 tr into ch-sp, 2 dc, (2 hdc, ch 1, 2 hdc) into ch-sp, 2 dc, (2 tr, ch 1, 1 tr) into ch-sp.

**Row 3:** ch 5, 2 tr into ch-sp, 2 fp-tr, ch 1, 1 fp-dc, ch 1, 1 fp-dc, 2 hdc, (2 hdc, ch 1, 2 hdc) into ch-sp, 2 hdc, 1 fp-dc, ch 1, 1 fp-dc, ch 1, 2 fp-tr, (2 tr, ch 1, 1 tr) into ch-sp.

**Row 4:** ch 5, 2 tr into ch-sp, 2 tr, \*1 dc, ch 1\* repeat \*-\* a total of 4 times, 1 dc, skip 1, 2 hdc, (2 hdc, ch 1, 2 hdc) into ch-sp, 2 hdc, skip 1, \*1 dc, ch 1\* repeat \*-\* a total of 4 times, 1 dc, 2 tr, (2 tr, ch 1, 1 tr) into ch-sp.

**Row 5:** ch 5, 2 tr into ch-sp, 2 fp-tr, \*1 fp-dc, ch 1\*, repeat \*-\* a total of 7 times, 1 dc, skip 1, 2 hdc, (2 hdc, ch 1, 2 hdc) into ch-sp, 2 hdc, skip 1, \*1 fp-dc, ch 1\*, repeat \*-\* a total of 7 times, 1 fp-dc, 2 fp-tr, (2 tr, ch 1, 1 tr) into ch-sp.

**Row 6:** ch 5, 2 tr into ch-sp, 2 tr, \*1 dc, ch 1\* repeat \*-\* a total of 10 times, 1 dc, skip 1, 2 hdc, (2 hdc, ch 1, 2 hdc) into ch-sp, 2 hdc, skip 1, \*ch 1, 1 dc\* repeat \*-\* a total of 10 times, 1 dc, ch 1, 2 tr, (2 tr, ch 1, 1 tr) into ch-sp.

**Row 7:** ch 5, 2 tr into ch-sp, 2 fp-tr, \*1 fp-dc, ch 1\*, repeat \*-\* a total of 13 times, 1 fp-dc, skip 1, 2 hdc, (2 hdc, ch 1, 2 hdc) into ch-sp, 2 hdc, skip 1, \*1 fp-dc, ch 1\*, repeat \*-\* a total of 13 times, 1 fp-dc, 2 fp-tr, (2 tr, ch 1, 1 tr) into ch-sp.

**Row 8:** ch 5, 2 tr into ch-sp, 2 tr, \*1 dc, ch 1\* repeat \*-\* a total of 16 times, 1 dc, skip 1, 2 hdc, (2 hdc, ch 1, 2 hdc) into ch-sp, 2 hdc, skip 1, \*1 dc, ch 1\* repeat \*-\* a total of 16 times, 1 dc, 2 tr, (2 tr, ch 1, 1 tr) into ch-sp.

**Row 9:** ch 5, 2 tr into ch-sp, 2 fp-tr, \*1 fp-dc, ch 1\*, repeat \*-\* a total of 19 times, 1 fp-dc, skip 1, 2 hdc, (2 hdc, ch 1, 2 hdc) into ch-sp, 2 hdc, skip 1, \*1 fp-dc, ch 1\*, repeat \*-\* a total of 19 times, 1 fp-dc, 2 fp-tr, (2 tr, ch 1, 1 tr) into ch-sp.

**Row 10:** ch 5, 2 tr into ch-sp, 2 tr, \*1 dc, ch 1\* repeat \*-\* a total of 22 times, 1 dc, skip 1, 2 hdc, (2 hdc, ch 1, 2 hdc) into ch-sp, 2 hdc, skip 1, \*1 dc, ch 1\* repeat \*-\* a total of 22 times, 1 dc, 2 tr, (2 tr, ch 1, 1 tr) into ch-sp.

**Row 11:** ch 5, 2 tr into ch-sp, 2 fp-tr, \*1 fp-dc, ch 1\*, repeat \*-\* a total of 25 times, 1 fp-dc, skip 1, 2 hdc, (2 hdc, ch 1, 2 hdc) into ch-sp, 2 hdc, skip 1, \*1 fp-dc, ch 1\*, repeat \*-\* a total of 25 times, 1 fp-dc, 2 fp-tr, (2 tr, ch 1, 1 tr) into ch-sp.

**Row 12:** ch 5, 2 tr into ch-sp, 2 tr, \*1 dc, ch 1\* repeat \*-\* a total of 28 times, 1 dc, skip 1, 2 hdc, (2 hdc, ch 1, 2 hdc) into ch-sp, 2 hdc, skip 1, \*1 dc, ch 1\* repeat \*-\* a total of 28 times, 1 dc, 2 tr, (2 tr, ch 1, 1 tr) into ch-sp.

**Row 13:** ch 5, 2 tr into ch-sp, 2 fp-tr, \*1 fp-dc, ch 1\*, repeat \*-\* a total of 31 times, 1 fp-dc, skip 1, 2 hdc, (2 hdc, ch 1, 2 hdc) into ch-sp, 2 hdc, skip 1, \*1 fp-dc, ch 1\*, repeat \*-\* a total of 31 times, 1 fp-dc, 2 fp-tr, (2 tr, ch 1, 1 tr) into ch-sp.

**Row 14:** ch 5, 2 tr into ch-sp, 2 tr, \*1 dc, ch 1\* repeat \*-\* a total of 34 times, 1 dc, skip 1, 2 hdc, (2 hdc, ch 1, 2 hdc) into ch-sp, 2 hdc, skip 1, \*1 dc, ch 1\* repeat \*-\* a total of 34 times, 1 dc, 2 tr, (2 tr, ch 1, 1 tr) into ch-sp.

**Row 15:** ch 5, 2 tr into ch-sp, 2 fp-tr, \*1 fp-dc, ch 1\*, repeat \*-\* a total of 37 times, 1 fp-dc, skip 1, 2 hdc, (2 hdc, ch 1, 2 hdc) into ch-sp, 2 hdc, skip 1, \*1 fp-dc, ch 1\*, repeat \*-\* a total of 37 times, 1 fp-dc, 2 fp-tr, (2 tr, ch 1, 1 tr) into ch-sp.

**Row 16:** ch 5, 2 tr into ch-sp, 2 tr, \*1 dc, ch 1\* repeat \*-\* a total of 40 times, 1 dc, skip 1, 2 hdc, (2 hdc, ch 1, 2 hdc) into ch-sp, 2 hdc, skip 1, \*1 dc, ch 1\* repeat \*-\* a total of 40 times, 1 dc, 2 tr, (2 tr, ch 1, 1 tr) into ch-sp.



**Row 17:** ch 5, 2 tr into ch-sp, 2 fp-tr, \*1 fp-dc, ch 1\*, repeat \*-\* a total of 43 times, 1 fp-dc, skip 1, 2 hdc, (2 hdc, ch 1, 2 hdc) into ch-sp, 2 hdc, skip 1, \*1 fp-dc, ch 1\*, repeat \*-\* a total of 43 times, 1 fp-dc, 2 fp-tr, (2 tr, ch 1, 1 tr) into ch-sp.

### Edging

**Row 18:** ch 5, 2 tr into ch-sp, 2 bp-tr, \*1 bp-dc, ch 1\*, repeat \*-\* a total of 46 times, 1 bp-dc, skip 1, 2 hdc, (2 hdc, ch 1, 2 hdc) into ch-sp, 2 hdc, skip 1, \*1 bp-dc, ch 1\*, repeat \*-\* a total of 46 times, 1 bp-dc, 2 bp-tr, (2 tr, ch 1, 1 tr) into ch-sp.

**Row 19:** ch 5, 2 tr into ch-sp, 2 fp-tr, \*1 fp-dc, ch 1\*, repeat \*-\* a total of 49 times, 1 fp-dc, skip 1, 2 hdc, (2 hdc, ch 1, 2 hdc) into ch-sp, 2 hdc, skip 1, \*1 fp-dc, ch 1\*, repeat \*-\* a total of 49 times, 1 fp-dc, 2 fp-tr, (2 tr, ch 1, 1 tr) into ch-sp.

**Row 20:** ch 2, 2 hdc into ch-sp, 2 bp-tr, \*1 bp-dc, ch 1\*, repeat \*-\* a total of 52 times, 1 bp-dc, 2 hdc, (5 hdc) into ch-sp, 2 hdc, \*1 bp-dc, ch 1\*, repeat \*-\* a total of 52 times, 1 bp-dc, 2 bp-tr, (2 hdc, ch 1, 1 hdc) into ch-sp.

### Finishing

**Row 21:** ch 2, 1 sl st in each st.

Break yarn.

Weave in ends.

### Enjoy!

KreaBossen - Irene Rasch