



CROCHET PATTERN

# Rhoda

Shawl

Design: Sarah Ruane / Ned & Mimi | Hobbii Design




## MATERIALS

1 skein of Hobbii Sultan Deluxe color 30  
Regent Rose

Crochet hook 3 mm (US D/3)

## YARN QUALITY

 **Sultan Deluxe**, Hobbii  
100% cotton  
250 g (8.8 oz) = 1000 m (1093 yds)

## GAUGE

22 sts x 11 rows = 4" x 4" / 10cm x 10cm  
measured over dc (blocked).

## ABBREVIATIONS

ch = chain  
tch = turning chain  
st = stitch  
sk = skip  
sp = space  
dc = double crochet  
beg = beginning  
rem = remaining

## SIZE

One size

## MEASUREMENTS

Width: 35 cm / 13.75"

Length: 165 cm / 65"

## PATTERN INFORMATION

Rhoda is a simple crochet wrap, with an easy, meditative row repeat. This pattern is a great introduction to "filet crochet" for those who haven't tried the technique before. Instead of following a written instruction for each row, you will follow a chart, and the pattern contains all the information you need to do this!

## HASHTAGS FOR SOCIAL MEDIA

#hobbiirhoda  
#hobbiidesign

## BUY THE YARN HERE

<https://shop.hobbii.com/rhoda-shawl>

## QUESTIONS

If you have any questions regarding this pattern, please feel free to email us at [support@hobbii.com](mailto:support@hobbii.com)  
Please make sure to include the pattern's name and number.

Happy Crafting!



# Pattern



## INFO AND TIPS

Please read through the entire pattern before beginning.

- This shawl is worked using the “filet crochet” technique.
- Instead of following a written pattern, you will work from the filet charts.
- Please see **Appendix: Filet Charts** for notes on how to read the charts, as well as Charts A, B and C required for the pattern.
- Begin each row with ch 3; this ch-3 counts as 1 dc. If you prefer, you can work a stacked double crochet at the beginning of a row in place of the ch-3.
- Stitch count is given in brackets [ ] at the end of each row.

## PATTERN

Ch 78.

Row 1: Dc in 4th ch from hook (*skipped ch-3 counts as 1 dc*), dc in each rem ch, turn. [76]

Rows 2-85: Work as per Chart A: Rows 2-8 twelve times.

Rows 86-94: Work as per Chart B: Rows 1-9.

Rows 95-178: Work as per Chart C: Rows 1-7 twelve times.

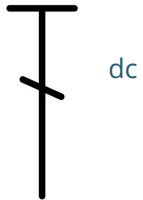
Row 179: Ch 3, dc in second st and each st across (*working 2 dc in each ch-2 sp*). [76]

## FINISHING

Weave in ends. Block shawl. All done!

## APPENDIX: FILET CHARTS

### Legend



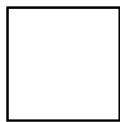
dc



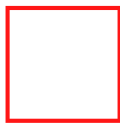
chain



Solid block = 4 dc



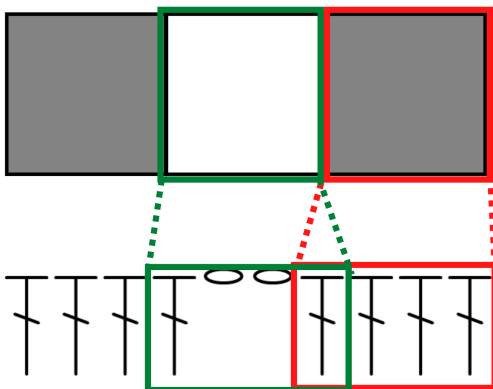
Open block = (1 dc, ch 2, sk 2 sts, 1 dc)



Repeat

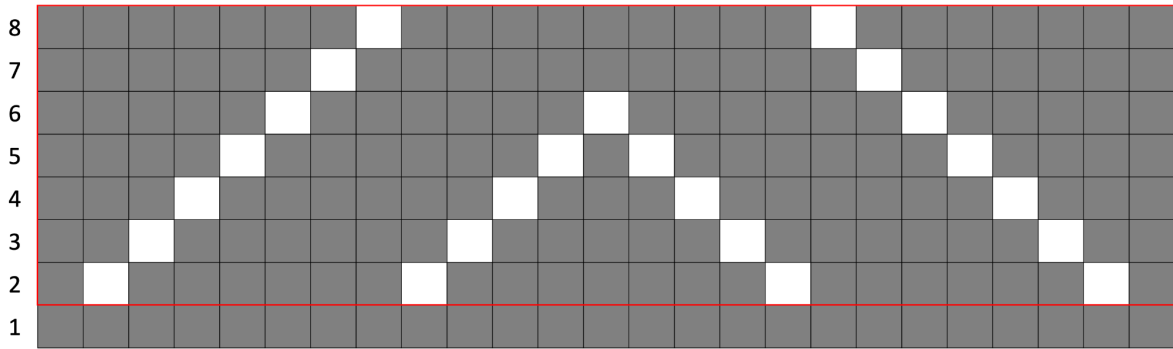
### How to Read the Charts

- Each solid block (grey) on the chart corresponds to 4 dc.
- Each open block (white) corresponds to (1 dc, ch 2, sk 2 sts, 1 dc).
- The fourth dc of each block is also the first dc of the next block.



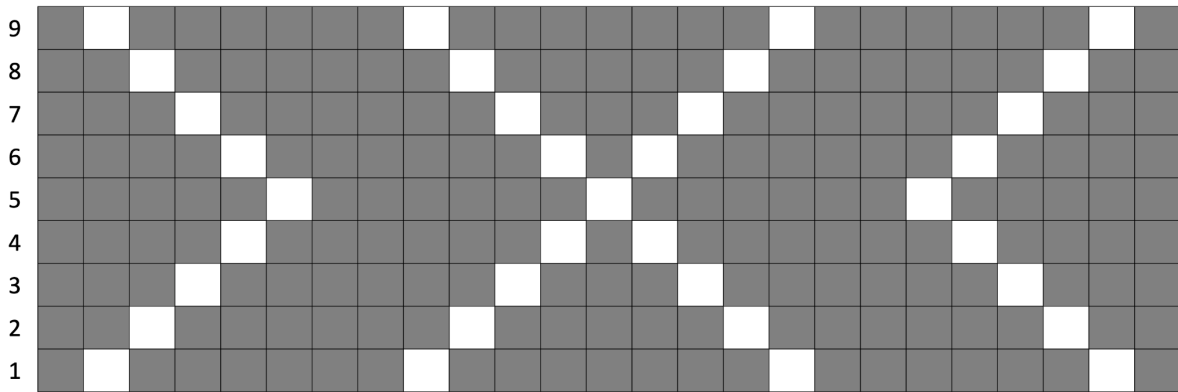
**Chart A**

Work Row 1. Then work Rows 2-8 twelve times.



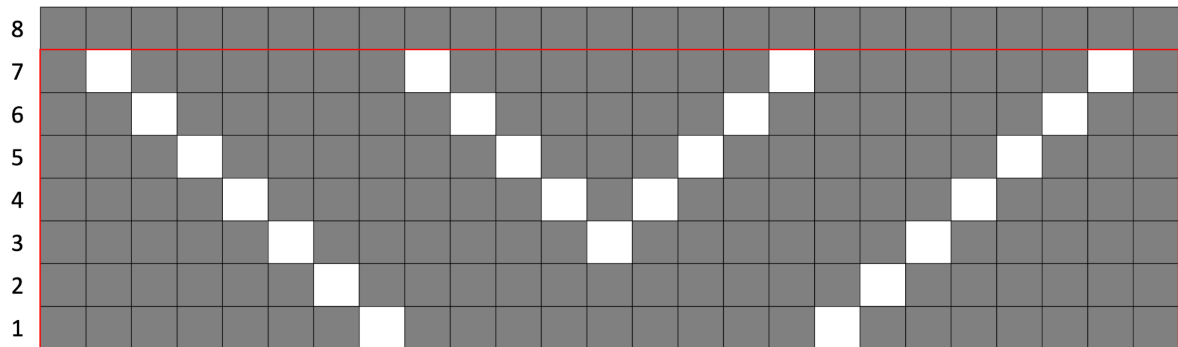
**Chart B**

Work Chart B one time.



**Chart C**

Work Rows 1-7 twelve times. End with Row 8.



**Enjoy!**

Sarah Ruane / Ned & Mimi

