



CROCHET PATTERN

French Bulldog

Blanket

Design: Willow Crochet | Hobbii Design




MATERIALS

Amigo XL

20 skeins of color 32
2 skeins of color 51
1 skein of color 52
1 skein of color 53
1 skein of color 56

Crochet hook 5 mm (US H/)
Tapestry needle
Scissors

YARN QUALITY

 **Amigo XL**, Hobbii
100 % Acrylic
50 g (1.8 oz) = 100 m (109 yds)

GAUGE

10 cm x 10 cm (4" x 4") = 12 sts x 10 rows

ABBREVIATIONS

ch = chain
hdc = half double crochet
fhdc = foundation half double crochet
RS = right side
WS = wrong side

SIZE

One size

MEASUREMENTS

Width: 152 cm / 60"
Length: 127cm / 50"

PATTERN INFORMATION

A graphgan blanket with a geometric style
French Bulldog made using simple half
double crochets.

HASHTAGS FOR SOCIAL MEDIA

#hobbiidesign

BUY THE YARN HERE

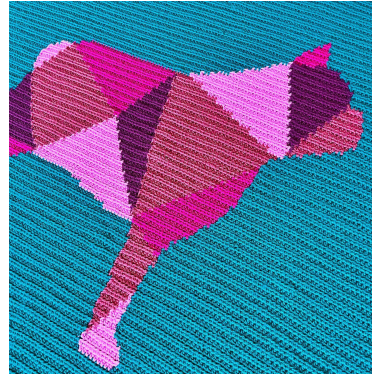
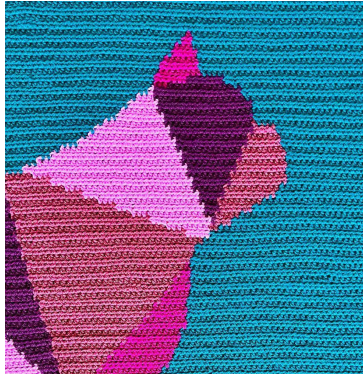
<http://shop.hobbii.com/french-bulldog-blanket>

QUESTIONS

If you have any questions regarding this pattern, please feel free to email us at support@hobbii.com
Please make sure to include the pattern's name and number.

Happy Crafting!

Pattern



INFO AND TIPS

This blanket is made using chains, half double crochets and foundation half double crochets. To begin the blanket use yarn color 32 and make 180 foundation half double crochets (this is your first row). Then, chain 1 (this does not count as a stitch) and turn. For every following row, you will work 1 HDC into every stitch, when you reach the end of the row, ch 1 and turn. You will work the entire blanket this way changing colours as instructed by the chart or written pattern.

How to read the written pattern

Here is an example of one row from a written pattern:

Row 10 [WS]: C84, B6, C6, A17

Legend

A: Green

B: Blue

C: Red

Each letter in the row corresponds with a color of yarn shown in the legend above. The number after the letter tells you how many stitches you need to do in that color. Therefore, for the example row, you would be doing 84 stitches in Red, 6 stitches in Blue, 6 stitches in Red and 17 stitches in Green.

If you would prefer to use the color chart to make your blanket, 2 versions can be found at the end of the written pattern - a full-size chart and a zoomed-in version recommended for printing.

GUIDE: CHANGING COLORS



For the purpose of this tutorial, I will be using green and yellow yarn and the stitch I am using is a half double crochet. In the first photo, I have made it to my final stitch using green yarn and I am ready to change to yellow. For the final green stitch, **DO NOT** complete the stitch. Instead, yarn over, insert your hook and pull up a loop (you should have three loops on your hook). Now, bring your green working yarn to the front of your work and drop it. You will now complete your stitch by yarning over and pulling through all three loops with the yellow yarn. You can then continue crocheting with the yellow yarn. Make sure to leave the green yarn at the front where you dropped it.



On your return row, once you reach the green stitches, the yarn you dropped on the first row will now be at the back of your work for you to pick up and work with. To change color, do the same thing as before - in your final yellow stitch yarn over, insert your hook and pull up a loop (you should have three loops on your hook). Bring your yellow yarn to the front, drop it and pick up the green yarn from the back of your work to complete your stitch.



If you need to change color after the point where you've dropped your working yarn, you will need to crochet over the loose strand, carrying it with you until you reach the point where you need to change colors. When you reach this point, gently pull on the strand to ensure no loops are visible on the back of your work - do not pull too tightly as this will cause the fabric to bunch up. You can then complete the color change.



If you need to change color before you reach the point where you have dropped your working yarn, you can still carry it over to change color. When you yarn over with the new color there will be a loose strand of yarn (shown in photos 2 & 3), make sure this is not too loose or too tight - it should sit close to your stitches. You will need to crochet over this strand as you continue crocheting to hide it.



If you need to use the same color twice in a row, for example, if I was to change back to green at the point indicated by the red arrow, I would need to add a new green bobbin. This means that you don't have to carry the green yarn under the yellow stitches as this would be visible and your blocks of color would not be as neat.

BLANKET

Legend

A: Petroleum Green (32)

B: Petunia Pink (56)

C: Marsala (51)

D: Bordeaux (53)

E: Dark Magenta (52)

Rows 2-22: A180

Row 23 [RS]: A67, B9, A56, C8, A40

Row 24 [WS]: A40, C8, A55, B10, A67

Row 25 [RS]: A67, B10, A55, C9, A39

Row 26 [WS]: A39, C7, A57, C1, B8, A68

Row 27 [RS]: A69, B7, C1, A58, C6, A39

Row 28 [WS]: A39, C6, A58, C2, B4, A71

Row 29 [RS]: A71, B4, C2, A58, C6, A39

Row 30 [WS]: A39, C6, A57, C4, B3, A71

Row 31 [RS]: A71, B3, C4, A57, C6, A39

Row 32 [WS]: A39, C6, A57, C5, B2, A71

Row 33 [RS]: A71, B2, C5, A56, C7, A39

Row 34 [WS]: A39, C7, A56, C6, B1, A71

Row 35 [RS]: A71, B1, C6, A56, D1, C6, A39

Row 36 [WS]: A39, C6, D2, A55, C7, A71

Row 37 [RS]: A71, C8, A54, D2, C6, A39

Row 38 [WS]: A39, C6, D3, A53, C8, A71

Row 39 [RS]: A71, C8, A52, D4, C6, A39

Row 40 [WS]: A39, C5, D6, A51, C8, A71

Row 41 [RS]: A71, C8, A50, D7, C4, A40

Row 42 [WS]: A40, C4, D8, A49, C9, A70

Row 43 [RS]: A70, C9, A48, D9, C3, A41
Row 44 [WS]: A42, C1, D11, A47, C7, D2, A70
Row 45 [RS]: A70, D4, C6, A45, D12, C1, A42
Row 46 [WS]: A43, D14, A43, C4, D7, A69
Row 47 [RS]: A69, D9, C2, A42, D15, A43
Row 48 [WS]: A43, D17, A30, B9, D12, A69
Row 49 [RS]: A67, D13, C2, B11, A25, D19, A43
Row 50 [WS]: A43, D20, A18, B16, E1, C3, D13, A66
Row 51 [RS]: A65, D13, C4, E2, B18, A13, D22, A43
Row 52 [WS]: A43, D23, B29, E3, C5, D12, A65
Row 53 [RS]: A64, D12, C7, E3, B27, C2, E21, A44
Row 54 [WS]: A44, E20, C4, B25, E4, C8, D12, A63
Row 55 [RS]: A62, D12, C9, E5, B23, C6, E19, A44
Row 56 [WS]: A44, E18, C8, B21, E5, C11, D11, A62
Row 57 [RS]: A61, D11, C12, E6, B19, C10, E17, A44
Row 58 [WS]: A44, E16, C12, B17, E7, C13, D10, A61
Row 59 [RS]: A61, D9, C15, E7, B15, C14, E14, A45
Row 60 [WS]: A45, E13, C16, B13, E8, C16, D9, A60
Row 61 [RS]: A60, D8, C17, E9, B11, C18, E12, A45
Row 62 [WS]: A45, E11, C20, B9, E9, C19, D7, A60
Row 63 [RS]: A60, D6, C20, E10, B7, C22, E10, A45
Row 64 [WS]: A46, E8, C24, B5, E11, C21, D5, A60
Row 65 [RS]: A59, D5, C23, E11, B3, C26, E7, A46
Row 66 [WS]: A46, E6, C28, B1, E12, C24, D4, A59
Row 67 [RS]: A59, D3, C25, E12, D2, C28, E5, A46
Row 68 [WS]: A46, E4, C27, D4, E11, C27, D2, A59
Row 69 [RS]: A59, D1, C28, E10, D7, C26, E2, A47
Row 70 [WS]: A47, E1, C25, D9, E10, C29, A59
Row 71 [RS]: A58, C31, E8, D12, C24, B1, A46
Row 72 [WS]: A45, B3, C21, D14, E8, C31, A58
Row 73 [RS]: A57, C32, E7, D17, C19, B3, A45
Row 74 [WS]: A44, B5, C16, D19, E6, C29, B5, A56
Row 75 [RS]: A54, C2, B8, C26, E5, D22, C14, B5, A44
Row 76 [WS]: A44, B6, C11, D24, E5, C23, B11, E1, C3, A52
Row 77 [RS]: A50, C5, E2, B13, C21, E3, D27, C9, B5, A45
Row 78 [WS]: A45, B6, C6, D29, E3, C18, B16, E3, C6, A48
Row 79 [RS]: A46, C8, E4, B18, C15, E2, D32, C4, B4, A47
Row 80 [WS]: A48, B4, C1, D34, E1, C13, B21, E5, C8, A45
Row 81 [RS]: A44, C9, E6, B23, C10, D35, A53
Row 82 [WS]: A55, D33, C7, B26, E7, C9, A43
Row 83 [RS]: A43, C9, E8, B28, C3, D31, A58
Row 84 [WS]: A90, B30, E9, C8, A43
Row 85 [RS]: A43, C8, E10, B26, A93
Row 86 [WS]: A95, B24, E11, C7, A43
Row 87 [RS]: A43, C7, E12, B21, A97
Row 88 [WS]: A100, B18, E13, C5, A44
Row 89 [RS]: A44, C5, E14, B15, A102
Row 90 [WS]: A103, B14, E15, C3, A45
Row 91 [RS]: A47, C1, E16, B11, A105
Row 92 [WS]: A107, B9, E16, A48
Row 93 [RS]: A48, E17, B7, A108

Row 94 [WS]: A109, B6, E17, A48

Row 95 [RS]: A49, E17, B3, A111

Row 96 [WS]: A113, B1, E16, A50

Row 97 [RS]: A51, E12, D3, A114

Row 98 [WS]: A114, D6, E7, A53

Row 99 [RS]: A57, D8, A115

Row 100 [WS]: A115, D7, A58

Row 101 [RS]: A58, D6, A116

Row 102 [WS]: A117, D5, A58

Row 103 [RS]: A59, D3, A118

Row 104 [WS]: A119, D2, A59

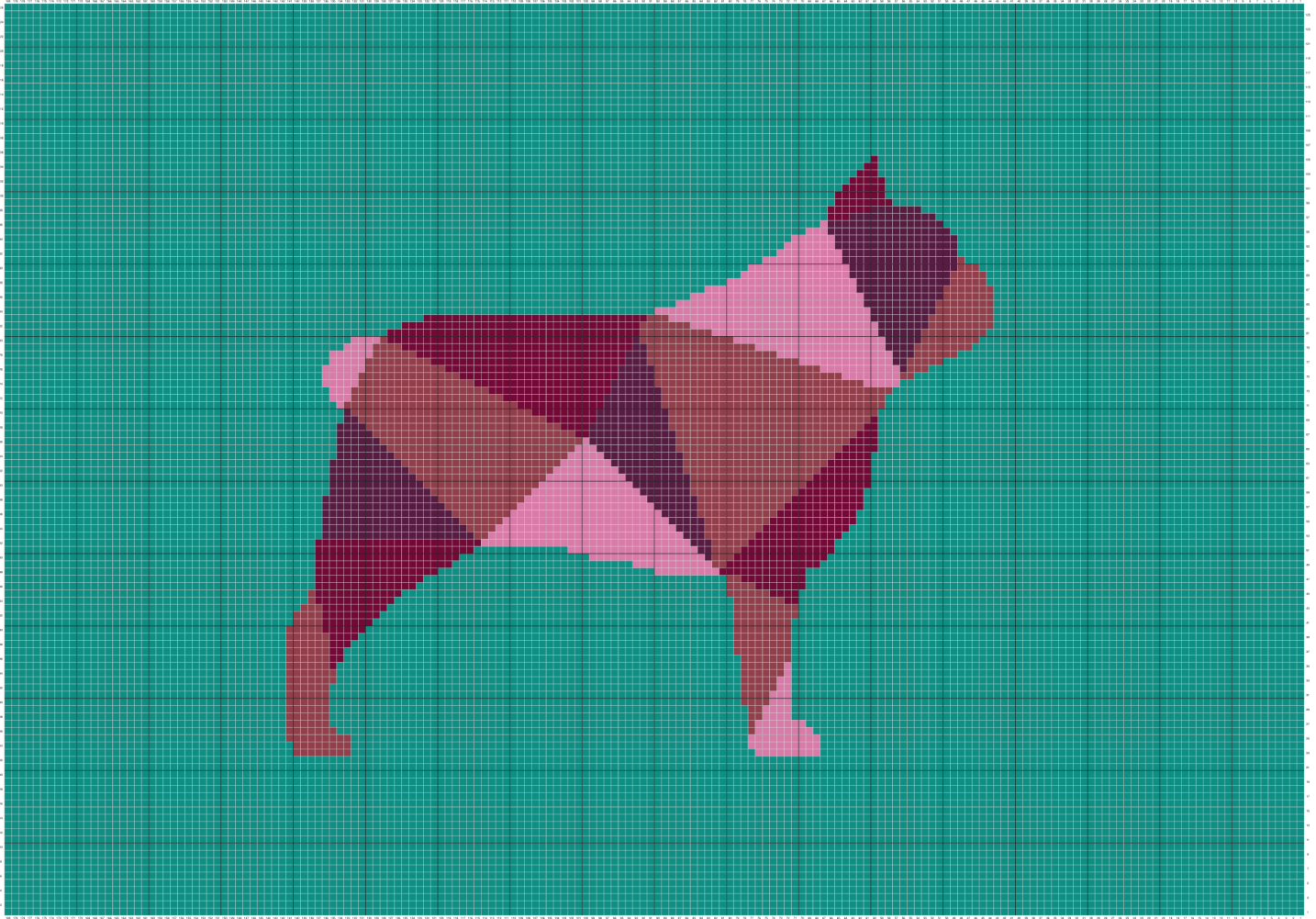
Row 105 [RS]: A59, D1, A120

Rows 106-126: A180

FINISHING

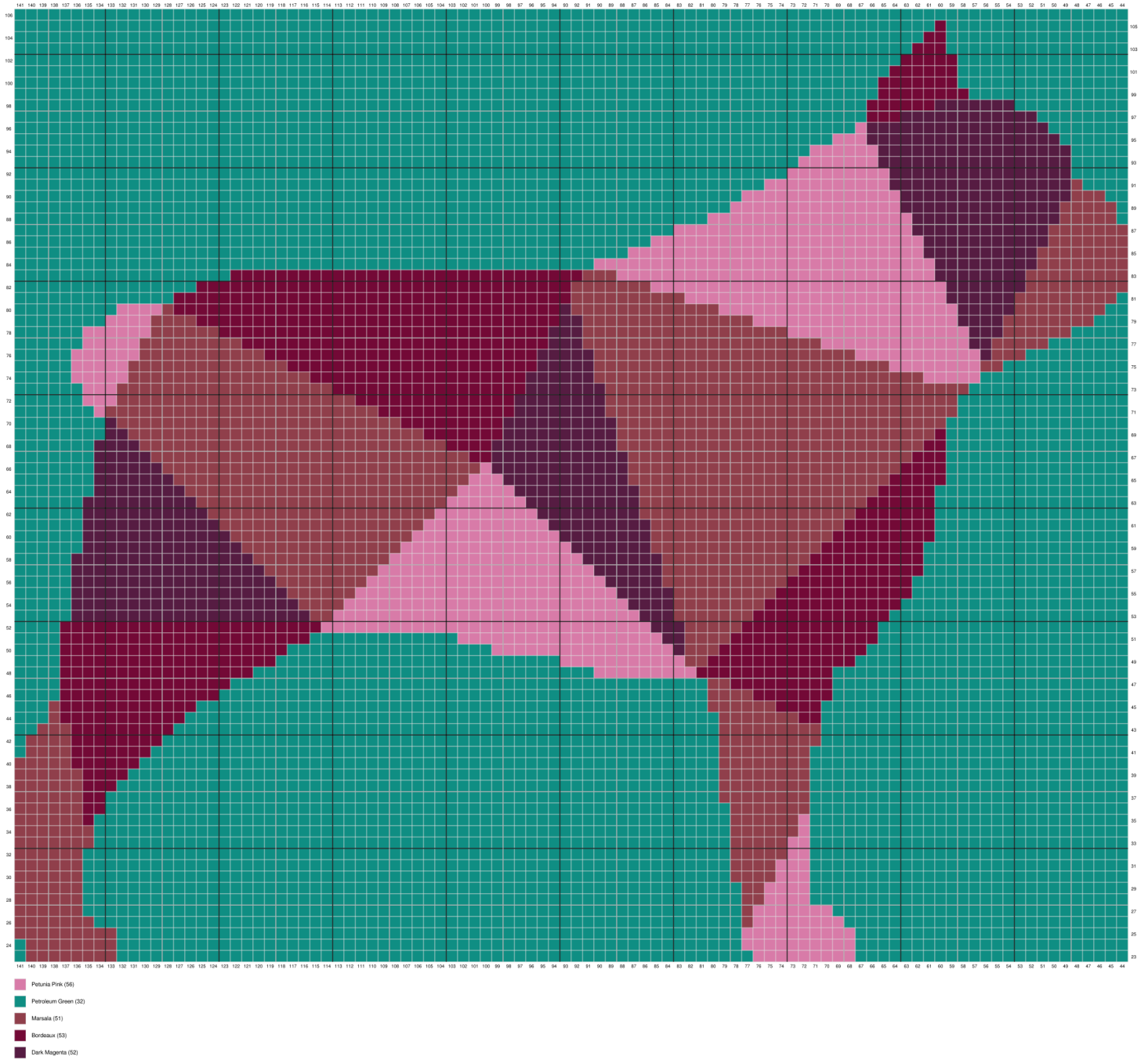
Fasten off your working yarn and weave in all ends.

COLOR CHART 1



COLOR CHART 2

Recommended for printing



Enjoy!
Lauren

