



KNITTING PATTERN

Love Games

Sweater

Design: [AnxiousGirlKnits](#) | Hobbii Design

MATERIALS

5 (6) 6 (7) skeins of Hobbii Amigo Chunky color A02, Ecru

5 (6) 6 (7) skeins of Hobbii Amigo Chunky color A47, Delicate Rose

1 (1) 1 (1) skein of Hobbii Amigo Chunky color A43, Bright Red

Circular needles 8mm (US 11), 80 cm
or straight needles

Circular needles 7mm (US 10.5), 80 cm
or straight needles

Circular needles 7mm (US 10.5), 40 cm

Stitch markers

Darning needle

YARN QUALITY

 **Amigo Chunky**, Hobbii

100% Acrylic

100 g (3.5 oz) = 100 m (109 yds)

GAUGE

10 cm x 10 cm (4" x 4") = 10 sts x 15 rows
on 8mm needles

ABBREVIATIONS

K = knit

P = purl

st = stitch(es)

P2tog = purl two stitches together

K2tog = knit two stitches together

Ssp = slip slip purl together

Ssk = slip slip knit together

Co = cast off

RS = right side of work

WS = wrong side of work

*= repeat this section

SIZE

S (M) L (XL)

FLAT MEASUREMENTS

Width: 51 (55) 61 (69) cm / 20" (21.6") 24" (27.2")

Length: 58 (58) 61 (67) cm / 22.8" (22.8") 24" (26.4")

PATTERN INFORMATION

This jumper is knitted bottom up in the flat.

Decreases are made to shape the neckline. The shoulders are horizontal and invisible seamed.

Stitches are picked up for the sleeves and then

knitted flat. Side seams and sleeves are sewn

together. Stitches are picked up for the collar

and then knitted in the round. Finishing touches

to the heart are added with a running stitch.

HASHTAGS FOR SOCIAL MEDIA

#HobbiiLoveGames

#hobbiiDesign

BUY THE YARN HERE

<http://shop.hobbii.com/love-games-sweater>

QUESTIONS

If you have any questions regarding this pattern, please feel free to email us at

support@hobbii.com

Please make sure to include the pattern's name and number.

Happy Crafting!



Pattern



INFO AND TIPS

Color codes

C1: color A02, Ecu

C2: color A47, Delicate Rose

C3: color A43, Bright Red

Cut C1 and C2 into 4 smaller balls of about 12m in each color as you end up working with 7 balls at a time (pictured above).

A "checkerboard" is one square of color (9 sts x 13 rows). A "checkerboard row" is the whole row of these.

BODY

Front

Using 7mm needles (US 10,5), long tail cast on 53 (57) 63 (71)st in C3. Change to C1 work in 1x1 rib until the piece measures 5cm/2" from cast on edge. Make sure your last row is an RS row.

Change to 8mm (US11) needles. You will be working in stockinette for the remainder of the body.

Whilst in stockinette you will need to use intarsia to change between the checkerboard colors. This means you need to twist the yarns together when changing color to avoid holes. Work like this: At each color change, the old color is brought over the new color and the new color is picked up from under the old color and worked from there. Overlapping the yarns catches the old color as the two strands link and prevent a gap at the color change.

When you are attaching the colors initially for the first checkerboard row you can't twist to stop holes. Instead catch the new color on the WS a stitch before you need to change color. You do this by wrapping the new color around the existing, then when you stitch the last stitch in the existing color it should catch it.

Your first row will be a WS so P all. Then knit pattern as below:

Color 1 - 0 (0) 0 (4) st
Color 2 - 4 (6) 9 (9) st
Color 1 - 9 (9) 9 (9) st
Color 2 - 9 (9) 9 (9) st
Color 1 - 9 (9) 9 (9) st
Color 2 - 9 (9) 9 (9) st
Color 1 - 9 (9) 9 (9) st
Color 2 - 4 (6) 9 (9) st
Color 1 - 0 (0) 0 (4) st

This is your first checkerboard row.

Continue in stockinette following the above to create the squares for 13 rows total. Remember to twist yarns between the color changes so you don't get holes.

After row 13 change the color. Color 1 squares become color 2 and vice versa. To change the colors, leave about 5" and cut off the balls. Then tie the new color onto this cut yarn. The knot then falls at the wrong side of the fabric and you can tighten or loosen later on so it lays seamlessly at the back.

With the colors changed work 13 rows then change them again. You will have 2 full rows of checkerboard.

You will now be working in the pattern below, starting from the bottom right corner marked "1". When you reach the red of the heart, add the color the same way you added the first checkerboard row, by catching it a row before you want to change.

Chart for S

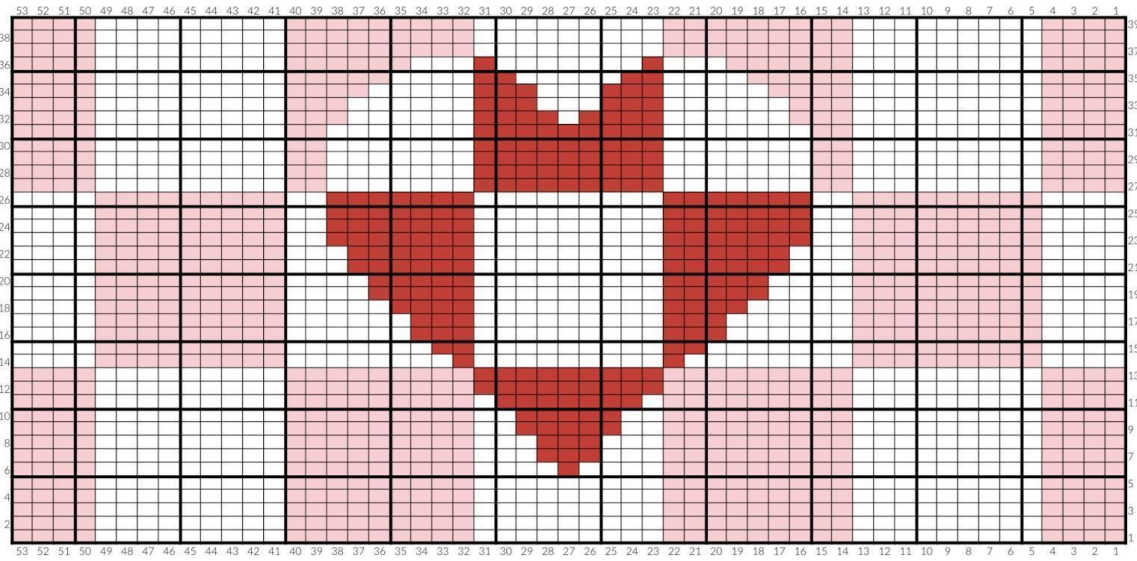


Chart for M

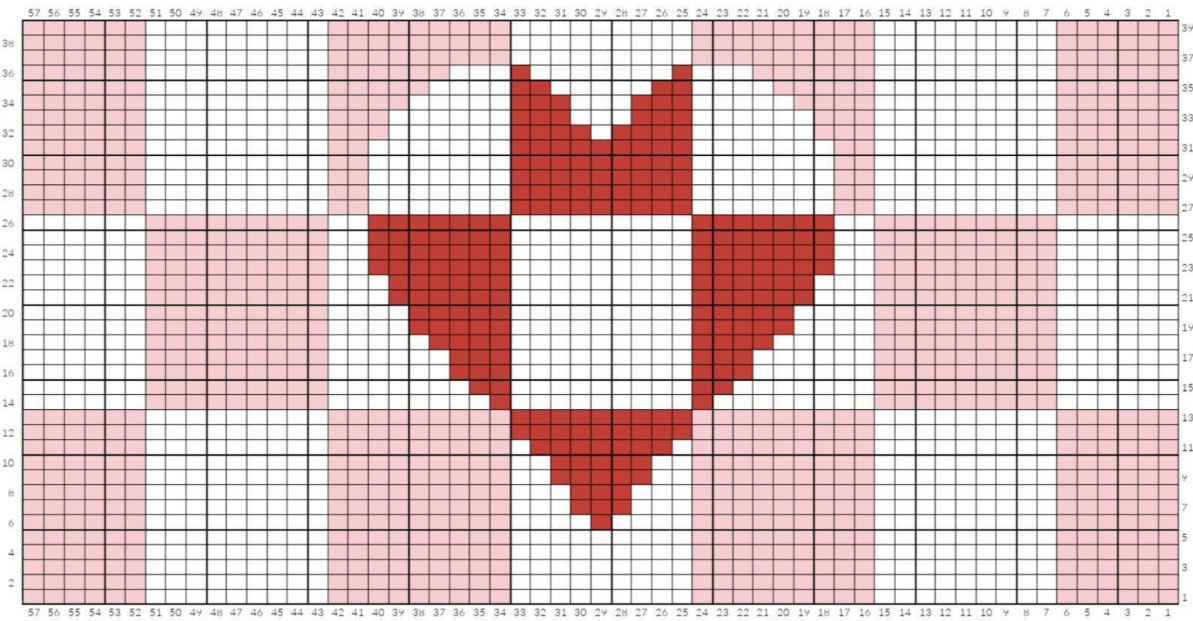


Chart for L

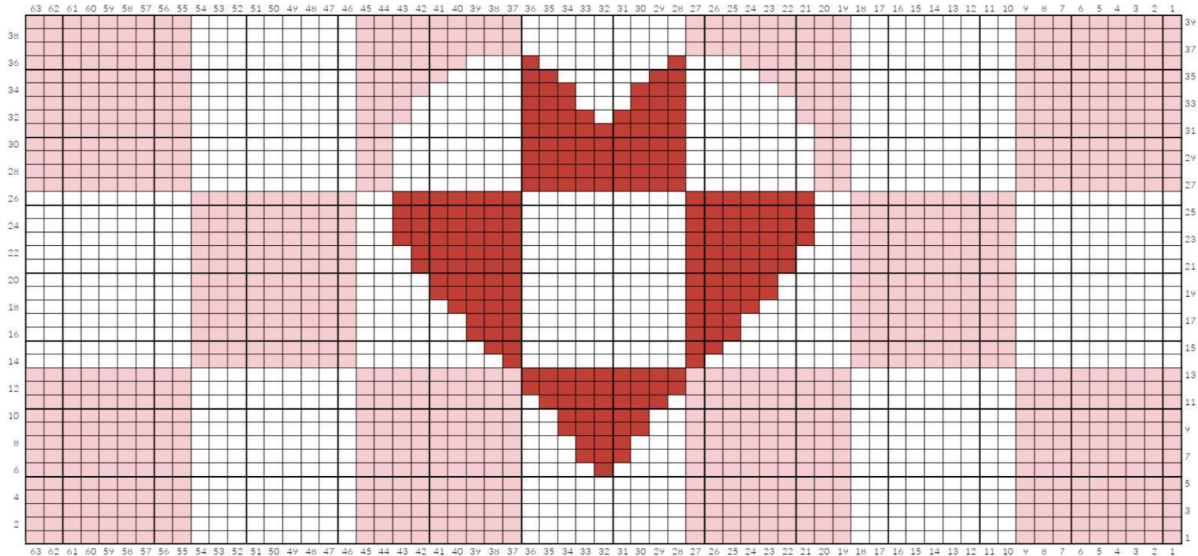
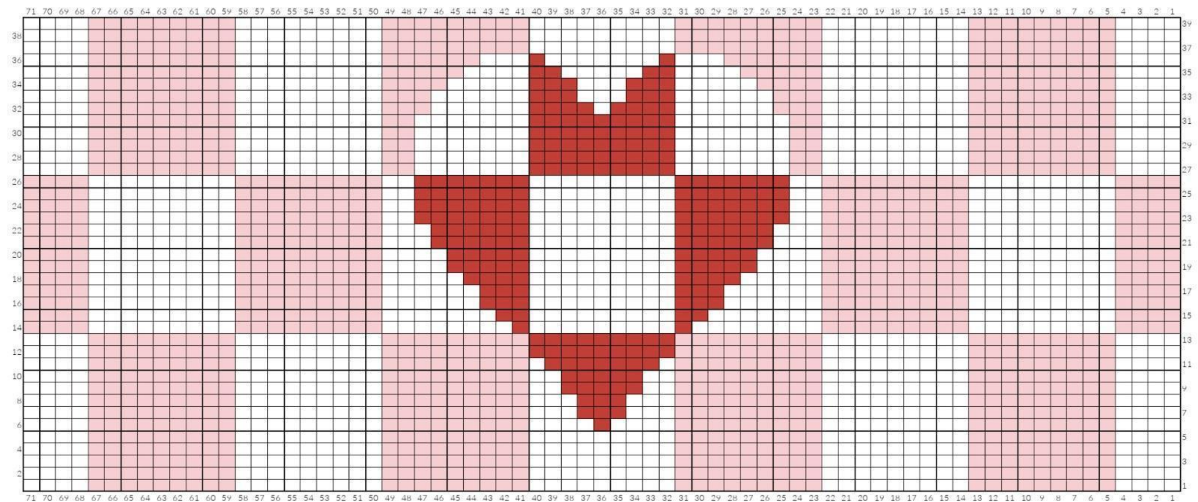


Chart for XL



Change the colors again, this time work 9 (9) 13 (9) rows. Make sure your last row is a WS row

For size L only change the colors when you are at the end of a checkerboard row.

All sizes; You will now start to shape the neckline:

k23 (24) 27 (30), co 7 (9) 9 (11), k23 (24) 27 (30)

You can either keep the right shoulder (as you look at it) on a needle or put it on some scrap yarn for later.

FRONT LEFT SHOULDER

Row 1 WS: p all

Row 2 RS: ssk, k remaining.

Row 3 WS: p all

Sizes S, M, XL: Row 3 is the 13th row in these colors. Switch the colors.

Row 4 RS: ssk, k remaining.

Row 5 WS: p all

Row 6 RS: ssk, k remaining.

Row 7 WS: p all

Row 8 RS: ssk, k remaining.

Row 9 WS: p all

Row 10 RS: k all

Row 11 WS: p all

Row 12 RS: co all 19 (20) 23 (26) stitches remaining.

To cast off intarsia, cast off till one stitch before the color changes, twist the threads and knit in the next color. Continue to cast off as normal. The cast off should now be a clean color change in line with the squares.

Cast off both shoulders this way

Tip: leave a long enough tail to sew the shoulders together

FRONT RIGHT SHOULDER

Tie on at the inside neck on the WS, you should have 23 (24) 27 (30)st on your needle.

Row 1 WS: p all

Row 2 RS: k all except last two st, k2tog.

Row 3 WS: p all

Sizes S, M, XL: Row 3 is the 13th row in these colors. Switch the colors.

Row 4 RS: k all except last two st, k2tog.

Row 5 WS: p all

Row 6 RS: k all except last two st, k2tog.

Row 7 WS: p all

Row 8 RS: k all except last two st, k2tog.

Row 9 WS: p all

Row 10 RS: k all

Row 11 WS: p all

Row 12 RS: co all 19 (20) 23 (26) stitches remaining.

BODY

Back

Using 7mm needles, long tail cast on 53 (57) 63 (71)st in C3. Change to C1 knit in 1x1 rib until the piece measures 5cm/2" from cast on edge. Make sure your last row was an RS row.

Change to 8mm (US11) needles. You will be working in stockinette for the remainder of the body.

Work intarsia in the same way as for the front.

Your first row will be a WS so P all. Then knit pattern as below:

Color 1 - 0 (0) 9 (4) st

Color 2 - 4 (6) 9 (9) st

Color 1 - 9 (9) 9 (9) st

Color 2 - 9 (9) 9 (9) st

Color 1 - 9 (9) 9 (9) st

Color 2 - 9 (9) 9 (9) st

Color 1 - 9 (9) 9 (9) st

Color 2 - 4 (6) 0 (9) st

Color 1 - 0 (0) 0 (4) st

Continue in stockinette following the above to create the squares.

After row 13 change the color by the same method as the front. With the colors changed work 13 rows then change them again. Keep repeating this till you have a total of 6 (6) 6 (7) complete rows of checkerboard made up of 13 rows each.

Switch colors for the final time and work 7 (7) 11 (7) rows

Make sure your last row is a WS row. You will now start to shape the neckline.

K19 (20) 23 (26), co15 (17) 17 (19), K19 (20) 23 (26)

You can either keep the right shoulder (as you look at it) on a needle or put it on some scrap yarn for later.

Row 1: WS p all

Row 2: RS co all 19 (20) 23 (26) sts

Repeat for the other shoulder, tie on on the WS at the neckline.

Sew the shoulders together using the horizontal invisible seam method. Make sure the squares match.

COLLAR

Change to 7mm, 40cm circular needles. In C1 pick up 54 (56) 58 (62) around the neckline and mark the beginning with a stitch marker. If you pick up a few more/less that's fine, just make sure it's an even number.

Work in 1x1 rib *k1, p1* repeat, until the piece measures 8cm/3.1", if you want a larger or smaller folded neck you can change here, but remember it will change the amount of yarn needed.

Cast off all stitches, leave a long tail to stitch it down with. (I used the super stretchy cast off)

(Tip: check it goes over your head before sewing it down)

Fold over the collar so the cast off edge is on the inside and using a darning needle loosely stitch it down. Don't pull it too tightly or you won't be able to stretch it over your head.

SLEEVES

Repeat this section twice, one for each sleeve.

From the hem count up 3.5 (3.5) 4 (4) checkerboard rows and place a marker on both the front and back, marking the armhole for your sleeves. Squares in total should be:

Sizes S + M: half, 2, 1 with shoulder seam in the middle, 2, half

Sizes L: 6

Sizes XL: 3, 1 with shoulder seam in the middle, 3

It should measure 55 (55) 55 (62) cm from marker to marker.

FOR SIZES S + M

With the RS side facing you we will now pick up stitches for the sleeve. When picking up stitches for the sleeve, they need to be a continuation of the checkerboard design on the body using 8 mm (US 11) needles. To help make sure the squares continue seamlessly, make sure you pick up on the first and last row of each color (except in the 5 st as this isn't a full square so will just need one of the edge rows)

color 1 - 5 st

color 2 - 9 st

color 1 - 9 st

color 2 - 13 st

color 1 - 9 st

color 2 - 9 st

color 1 - 5 st

You now have 59 st on the needle. As you are working in stockinette in the flat, your next row will be a WS row, continue in color as you did for the body, but on the shoulder color 2 which is 13 st we need to decrease this down to 9 by the following;

P1, p2tog, p2, p2tog, ssp, p1,ssp, p1.

You will have 55 st remaining.

Continue as normal till the end of the row. Continue in pattern for:

Size S - 8 more rows

Size M - 6 more rows

This should now be a full square including the section on the body.

Change colors as you did on the body and continue normally working 13 rows for each checkerboard row, then switching the colors.

Not including the shorter checkerboard row of S - 8 rows / M - 6 rows, work 3 complete checkerboard rows. On the 4th checkerboard row, work 12 rows. The 13th row will be a decreasing row.

Continue to the cuff decrease section.

FOR SIZE L

As the body is finished with complete checkerboard squares, the sleeve needs to be the opposite color to continue the checkerboard pattern on.

With the RS side facing you we will now pick up stitches for the sleeve. When picking up stitches for the sleeve, they need to be a continuation of the checkerboard design on the body using 8mm (US 11) needles. To help make sure the squares continue seamlessly, make sure you pick up on the first and last row of each color

On the right sleeve as you look at it from the front. Pick up the color opposite to the body it's should be as follows;

Color 1 - 10 st

Color 2 - 9 st

Color 1 - 9 st

Color 2 - 9 st

Color 1 - 9 st

Color 2 - 10 st

On the left sleeve as you look at it from the front. Pick up the color opposite to the body it's should be as follows;

Color 2 - 10 st

Color 1 - 9 st

Color 2 - 9 st

Color 1 - 9 st

Color 2 - 9 st

Color 1 - 10 st

You will have 56 st

Continue as before working in the flat. Complete 4 checkerboard rows of 13 rows each.

For the 5th checkerboard row work 12 rows - the 13th row we will be decreasing for the cuff.

Scroll down to the cuff decrease section.

FOR SIZE XL

With the RS side facing you we will now pick up stitches for the sleeve. When picking up stitches for the sleeve, they need to be a continuation of the checkerboard design on the body using 8mm (US 11) needles. To help make sure the squares continue seamlessly, make sure you pick up on the first and last row of each color

color 1 - 9 st

color 2 - 9 st

color 1 - 9 st

color 2 - 13 st

color 1 - 9 st

color 2 - 9 st

color 1 - 9 st

You will have 67st on the needle. As you are working in stockinette in the flat, your next row will be a WS row, continue in color as you did for the body, but on the shoulder where you have 13 stitches in color 2 we need to decrease this down to 9 by the following:

P1, p2tog, p2, p2tog, ssp, p1,ssp, p1.

You will have 63st remaining.

Continue as normal to the end of the row. Continue in pattern for 8 more rows. This could now be a full square including the section on the body.



Change colors as you did on the body and continue normally working 13 rows for each checkerboard row, then switching the colors

Not including the 8 row checkerboard row, work 3 complete checkerboard rows of 13 rows each. On the 4th checkerboard row, work 12 rows. The 13th row will be a decrease row as below.

CUFF DECREASES FOR ALL SIZES

Change to needles 7 mm (US 10.5). Keep in your checkerboard colors - decreases are done within the checkerboard pattern.

WS Row 13 size S + M - p2tog, p1, ssp, *p2tog x2, p1, ssp x 2* x5, k2tog, p1, ssp (31st remaining)

WS Row 13 size L - p1, *p2tog x2, p1, ssp x2* x6, p1 (32st remaining)

WS Row 13 size XL - *p2tog x2, p1, ssp x 2* x7 (35st remaining)

You are now finished with the checkerboard colors. The cuff will be worked in C1.

RS Row 14 sizes S + M - k1, k2tog, *ssk, k1, k2tog* x5 ssk, k1. (19st remaining)

RS Row 14 sizes L - k1, ssk, k1, k2tog, *ssk, k1, k2tog* x4, ssk, k1, k2tog, k1. (20st remaining)

RS Row 14 sizes XL - *ssk, k1, k2tog* x7. (21st remaining)

Work in 1x1 rib for 6cm/2.3", last row should be a RS

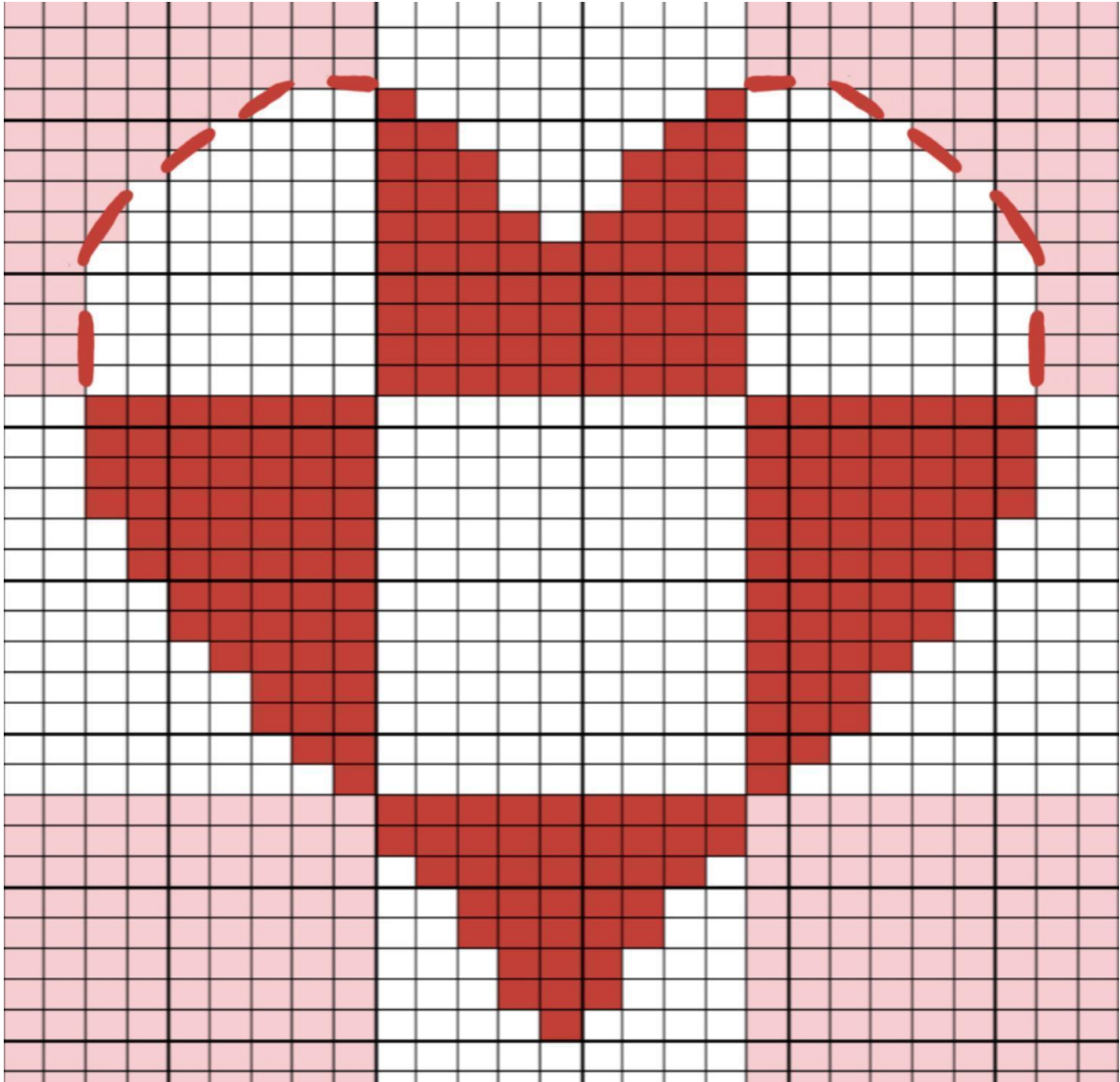
Change to C3 and work 1 row of 1x1 rib, then tubular cast off.

FINISHING TOUCHES

You are nearly there!

Use a darning needle to sew your work together starting at the cuffs and down the side seam using the horizontal invisible seam method.

Optional: To make the heart really stand out, use a darning needle and C3 to make a running stitch around the edge of the heart curve. See chart below for help.



Time to weave in all those ends.... Sorry there's so many!

And voila! You're done!!

Tag me in your finished pictures on Instagram @anxiousgirlknits.

