



CROCHET PATTERN

Barbara

Bolero

Design: **Caroline Edal - Tarda Studio** | Hobbii Design



MATERIALS

2 (3) 4 (5) skeins of Kind Feather col
Turquoise (17)

Crochet hook 4 mm

YARN QUALITY

 **Kind Feather**, Hobbii

100% acrylic

100 g (3.5 oz) = 235 m (257 yds)

GAUGE

10 x 10 cm (4" x 4") = 16 sts x 10 rows

ABBREVIATIONS

Sc = single crochet

Dc = double crochet

Ch = chain

Ch-sp = chain space

St = stitch(es)

Sl st = slip stitch

Beg = beginning

... = repeat from * to * around

SIZE

S (M) L (XL)

MEASUREMENTS

Length (sleeve to sleeve): 150 (162) 174 (186) cm/ 59
(63.8) 68.5 (73.2) inches

Width: 22 (27) 32 (37)/ 8.7 (10.6) 12.6 (14.6) inches

PATTERN INFORMATION

The Barbara Bolero is the perfect choice if you want to bring a little color and life to your wardrobe. Worked in a contemporary crochet pattern this bolero will be a beautiful addition to any outfit.

HASHTAGS FOR SOCIAL MEDIA

#hobbiibarbara

#hobbiiidesign

BUY THE YARN HERE

<http://shop.hobbii.com/barbara-bolero>



QUESTIONS

If you have any questions regarding this pattern, please feel free to email us at

support@hobbii.com

Please make sure to include the pattern's name and number.

Happy Crafting!

Pattern

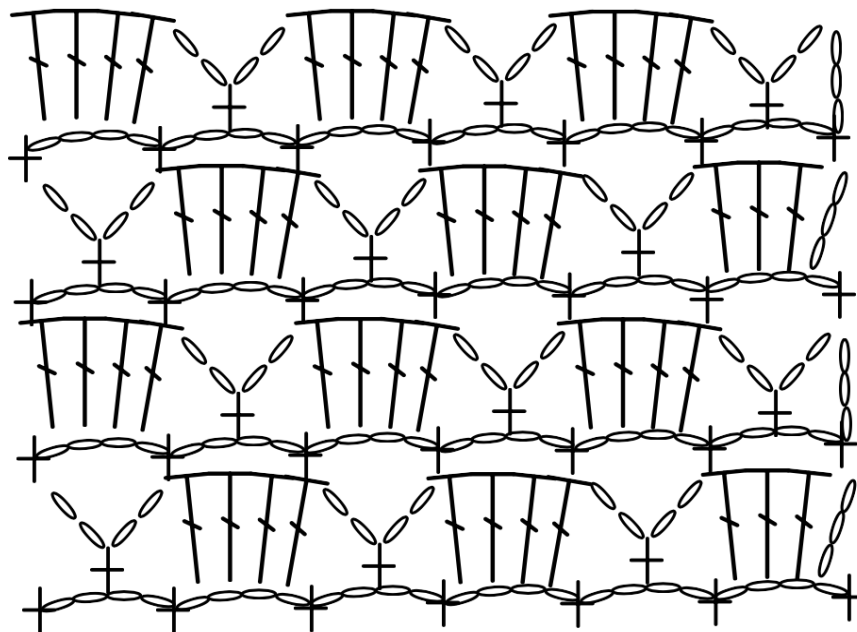


TIPS AND INFO

The Barbara Bolero is constructed by starting with "SLEEVE 1", then working "BACK" and finally, "SLEEVE 2".

It is important to work the different parts in the correct order. The work is based on a pattern, pictured in the section "STITCH PATTERN" below. Note that at the beginning of round, ch 3 can substitute 1 dc – further information will follow in the instructions. It is important to note that a significant difference between working the sleeves and the back panel, is that on the back panel you will not sl st to join.

STITCH PATTERN



SLEEVE 1

Ch 48 (48) 56 (56) and sl st in first ch to join, creating a circle.

Round 1: Ch 4 and join with a sc in the 4. Ch from the hook. *ch 4 and join with a sc into the 4. Ch from the last sc.* Sl st in 1. Ch at the beginning of round. Thus creating 12 (12) 14 (14) small circles along the ring.

Round 2: Ch 3. Work 3 dc in the ch4-sp from round 1. *ch 2, work 1 sc in next ch-sp, ch 2. Work 4 dc in the next ch-sp* Sl st in top of ch3 at the beg of round.

Round 3: Ch 4. Work 1 sc in ch2-sp from round 2. *Ch 4 and work 1 sc in the next ch-sp*. Sl st in 1. ch of the beg of round.

Round 4: Ch 5. Work 1 sc in the first ch4-sp from round 3. Ch 2. *Work 4 dc in the next ch-sp. Ch 2, 1 sc in the next ch-sp and ch 2*. (in the final ch-sp you will only work 3 dc, the beg of round counts as the 4. Dc). Sl st to top of ch3 at the beginning of round

Round 5: *Ch 4. Work 1 sc in ch2-sp from beg of round 4. Ch 4 and work 1 sc in the next ch-sp*. Sl st in 1. ch from the beg of round.

Repeat "Round 2", "Round 3", "Round 4" and "Round 5" until you have a total of 57 (57) 61 (61) rounds. *Or until your sleeve has the desired length.*

BACK

Round 1: Ch 3. Work 3 dc in ch4-sp from round 5 of "SLEEVE 1". *Ch 2, 1 sc in next ch-sp and ch 2. Work 4 dc in the next ch-sp* Repeat from * to * until you reach the final ch-sp. Instead of working the ch 2, sc in ch-sp, ch 2 into the final ch-sp as done in "SLEEVE 1", You will now turn your work to change direction.

Row 2: Ch 4. Work 1 sc in ch2-sp from round 1. *Ch 4 and work 1 sc in the next ch-sp*. Turn your work to change direction.

Row 3: Ch 5. Work 1 sc in the first ch4-sp from round 2. Ch 2. *Work 4 dc in the next ch-sp. Ch 2, 1 sc in the next ch-sp and ch 2*. Turn your work to change direction.

Row 4: Ch 4. Work 1 sc in ch2-sp from round 3. *Ch 4 and work 1 sc in the next ch-sp*. Turn your work to change direction.

Row 5: Ch 3. Work 3 dc in ch4-sp from round 4. *Ch 2, 1 sc in next ch-sp and ch 2. Work 4 dc in the next ch-sp* Turn your work to change direction.

Repeat "Row 2", "Row 3", "Row 4" and "Row 5" until you have a total of 35 (39) 43 (47) rows for the "BACK" panel.

SLEEVE 2

Round 1: Ch 4. Join with a sc in the first ch-sp on the opposite side of your work (once more creating a circle as for "SLEEVE 1"). *Ch 4 and work 1 sc in the next ch-sp*.

Round 2: Ch 5. Work 1 sc in the first ch4-sp from round 1. Ch 2. *Work 4 dc in the next ch-sp. Ch 2, 1 sc in the next ch-sp and ch 2*. (In the final ch-sp you will only work 3 dc, the beg of round counts for the 4. Dc). Sl st in 3. Ch from beg of round to join.

Round 3: Ch 4. Work 1 sc in ch2-sp from beg of round 2. *Ch 4 and work 1 sc in the next ch-sp*. Sl st in 1. ch from the beg of round.

Round 4: Ch 3. Work 3 dc in ch4-sp from round 3. *Ch 2, 1 sc in next ch-sp and ch 2. Work 4 dc in the next ch-sp*. Sl st to 3. ch from the beginning of round

Round 5: Ch 4. Work 1 sc in ch2-sp from beg of round 4. *Ch 4 and work 1 sc in the next ch-sp*. Sl st in 1. ch from the beg of round.

Repeat "Round 2", "Round 3", "Round 4" and "Round 5" until you have a total of 57 (57) 61 (61) rounds. *Or until the sleeve reaches the desired length.*

Enjoy!

Caroline Edal, Tarda Studio.

