



CROCHET PATTERN

# Heart Full of Joy

## Pillow


Design: Hookloopsarah | Hobbii Design


## MATERIALS

4 skeins of Amigo XL color 08  
1 skein of Carnival color 19  
1 skein of Carnival color 10  
1 skein of Carnival color 11  
1 skein of Carnival color 06

Crochet hook 3.5 mm (US E/4)  
Filling material for stuffing (or pillow in the right size)

## YARN QUALITY

 **Carnival**, Hobbii  
100% Premium Acrylic  
100 g / 3.5 oz. = 240 m / 262 yds

 **Amigo XL**, Hobbii  
100 % HB Acrylic  
50 g / 1.8 oz. = 100 m / 109 yds

## GAUGE

10 cm x 10 cm (4" x 4") = 15 sts x 14 rows

## ABBREVIATIONS

ch = chain  
sc = single crochet  
ss = slip stitch  
RS = Right Side  
WS = Wrong Side

## SIZE

One size

## MEASUREMENTS

Width: 58 cm / 22.8"  
Length: 50 cm / 19.7"

## PATTERN INFORMATION

Each side of the pillow cover is worked bottom to top, using the tapestry technique and following the chart; the design on each side is identical; both sides are joined through sc, leaving 1 side open for stuffing, then closing it with sc.

## TECHNIQUES VIDEOS

Video Tutorial of the project:

[https://youtu.be/bLAGnp\\_kx34](https://youtu.be/bLAGnp_kx34)

## HASHTAGS FOR SOCIAL MEDIA

#hobbiidesign #hobbiiheartfullofjoy



## QUESTIONS

If you have any questions regarding this pattern, please feel free to email us at [support@hobbii.com](mailto:support@hobbii.com)

Please make sure to include the pattern's name and number.

Happy Crafting!

# Pattern



## INFO AND TIPS

Begin from the bottom of the chart: each square corresponds to 1 sc, each row in the chart corresponds to 1 crocheted row. Change colours using the tapestry technique, according to the colourway given in the chart. You will begin with the Background colour grey, then introduce the other colours progressively, carrying them with you all the way to the top.

Tapestry crochet can be reversible, but for this project you will create a Right Side (the clean, visible side) and a Wrong Side (the “ugly” side, where the tapestry process will be hidden).

## SIDE 1

Ch 78 with BC col Grey, then start working following Chart 1.

ROWS 1-4. 77 sc across.

ROW 5 (RS). 38 sc in col BC, 1 sc in col 2, 38 sc in col BC.

In Row 5, start working sc with col BC. After about 10 sts, introduce col 2 and keep working with col BC OVER col 2 (Photos 1, 2 and 3)



Photo 1



Photo 2



Photo 3

On the 38<sup>th</sup> sc, close the st with col 2 (Photos 4 and 5).



Photo 4



Photo 5

Following Chart 1, you need to work 1 sc in col 2, so insert the hook in the 39<sup>th</sup> st with col 2, but close the st with col BC again (Photos 6 and 7).



Photo 6



Photo 7

Work the next 38 sc with col BC, working over col 2, which you will be carrying along.

ROW 6 (WS). 37 sc in col BC, 3 sc in col 2, 37 sc in col BC.

In Row 6, work in col BC for 36 sts. On the 37<sup>th</sup> sc, close the st with col 2 and work 3 sc with col 2. On the 3<sup>rd</sup> sc, close the st with col BC again (Photo 8), and work the next 37 sts with col BC over col 2.



Photo 8

ROW 7 – 72. Work the pattern following Chart 1, introducing all colours progressively and using the tapestry technique as described.

Here are further useful tips to help you further with your work:

- *On all rows on the Wrong Side, try and work over the yarns you are carrying along alternatively: work 1 sc over them and 1 sc under them (Photo 9). In this way, the colours will not peek through on the RS (or will be less visible).*



Photo 9

- *When you introduce all colours, you will need to carry them with you all the way. You will pick up the one you need depending on the colour segment that Chart 1 calls for, while working over the others as described above.*
- *When working with all colours at once, the yarns will get tangled up; my tip is to lay all skeins aligned orderly near you and to work each colour when it presents itself on the chart. DO NOT try to re-align the skeins after working each heart segment, but always*

*pay attention to the movements you are making. So for example it is ok if you cross the yarn of col 3, say, over all other yarns when you need to work a segment in that colour, but when you need to change the colour you are working with, see that you uncross col 3 bringing it to the position it had before using it (this will be clearer after seeing my video tutorial).*

- *When you need to untangle all yarns, do so at the end of a row preferably, and not in-between.*

At the end of Row 72, cut off yarn.

## **SIDE 2**

Create Side 2 following the instructions for Side 1.

At the end of Row 72, do NOT cut off yarn.

## **ASSEMBLING**

Wet and/or steam block both sides of the pillow cover, if necessary. Align both sides of it so that the RSs are facing out and start joining the sides with sc, leaving one side open for the filling (or pillow in the correct size). You can either work over all loose yarn ends now, as you work in sc on the sides, or simply slip those ends inside the cover. If you stuff the cover with filling material, make sure you put in as much as you can, since filling material tends to flatten out in time. Once you are satisfied with the filling, close the remaining side with sc as before.

### **Done!**

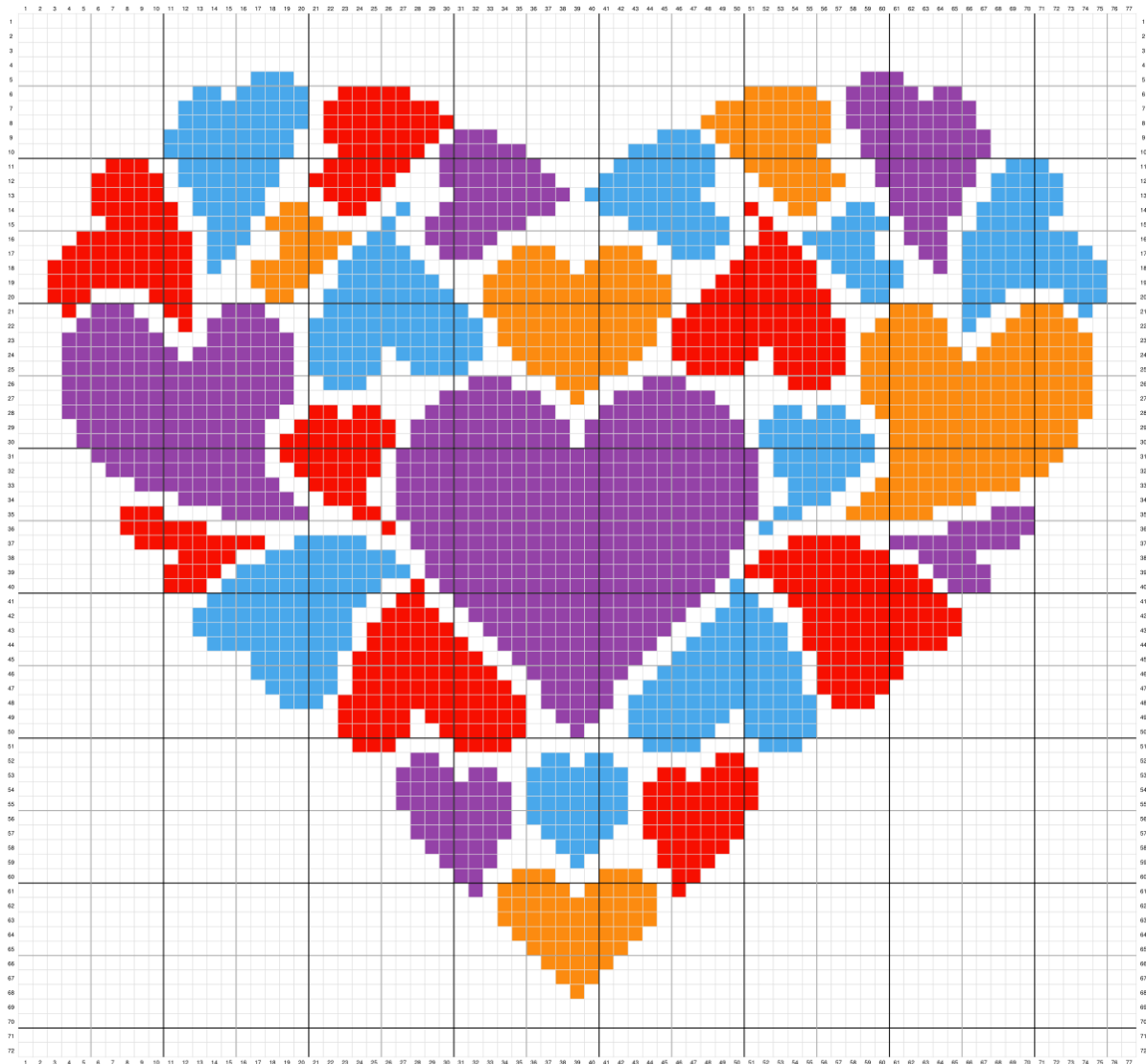
Sarah








HOOKLOOPSARAH

Crochet Creations

## CHART



## LEGEND

	BC color Grey (08)
	Heart color 3 (011)
	Heart color 2 (010)
	Heart color 4 (006)
	Heart color 1 (019)

