



CROCHET PATTERN

Esmeralda

Balaclava

Design: Caroline Edal, Tarda Studio | Hobbii Design

MATERIALS

1 (1) 1 skein of Divina col. Powder Blue (20)
1 (1) 1 skein of Divina col. Curry (31)
1 (1) 1 skein of Divina col. Rose (11)
1 (1) 1 skein of Divina col. Primrose (32)
1 (1) 1 skein of Divina col. Dusty Violet (19)
1 (1) 1 skein of Diablo Glitter col. Yellow
Ochre Gold (18)

Crochet hook 3.5 mm (US E/4)

YARN QUALITY

 **Divina**, Hobbii

65% Alpaca, 25% Polyamide, 10% Wool
50 g (1.75 oz) = 150 m (164 yds)

 **Diablo Glitter**, Hobbii

37% Acrylic, 31% Polyamide, 28% Mohair,
4% Polyester
25 g (0,88 oz) = 205 m (224 yds)

GAUGE

10 x 10 cm (4" x 4") = 20 sts x 10 rows
(double crochet)

ABBREVIATIONS

dc = double crochet

st(s) = stitch(es)

ch = chain

ns = next stitch

*...*x = repeat x times

sl st(s) = slip stitch(es)

SIZES

S (M) L

MEASUREMENTS

Length: 32 (34) 36 cm / 12.8" (13.6") 14.4"

Width: 18 (20) 22 cm / 7.2" (8") 8.8"

PATTERN INFORMATION

Esmeralda Balaclava will keep you warm during the cold winter months. Based on a colorful camouflage print with a glitter twist, the look becomes unique and modern.

HASHTAGS FOR SOCIAL MEDIA

#hobbiidesign #hobbiiesmeralda

QUESTIONS

If you have any questions regarding this pattern, please feel free to email us at

support@hobbii.com

Please make sure to include the pattern's name and number.

Happy Crafting!

Pattern instructions



INFO AND TIPS

The Esmeralda Balaclava is made up of a main part with matching rib edging and neck rib edging.

When changing colors, it can in some places be an advantage to keep the previous color under the new color while working. However, this is not a must.

Note that the 1st dc at the beginning of a row is replaced with a ch 2.

MAIN PART

Chain 20 (25) 30.

Rows 1-10: *Start with a ch 2 and work 1 dc in ns. 1 dc in each st* x10. Break off the yarn.
(The charts below show when to change colors)

Chart (S)

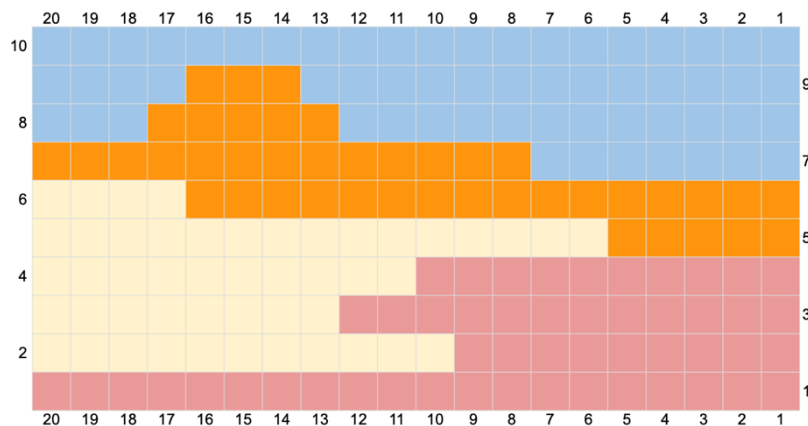


Chart (M)

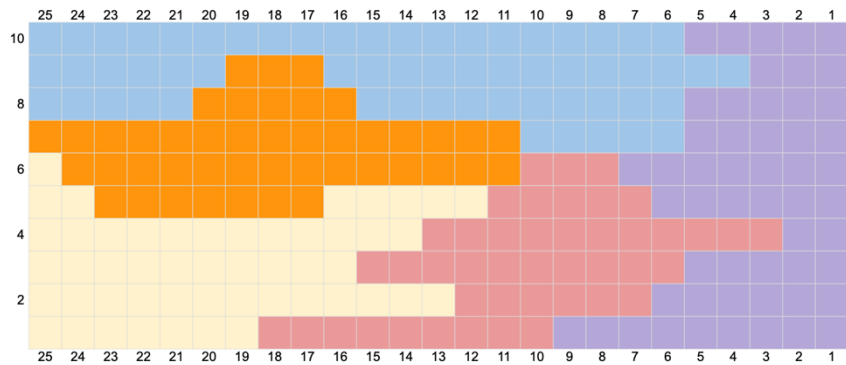
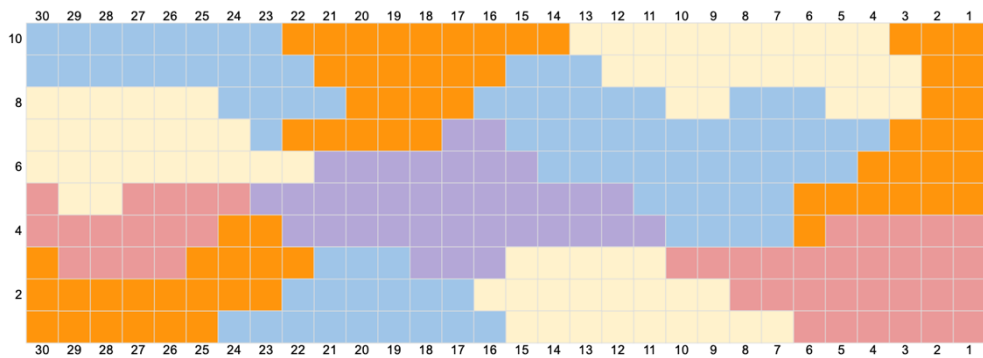


Chart (L)



Start with a ch 2 in the first st on the first row on the square. 1 dc in each st along 3 of the sides around the square. (On sides 1 and 3 where the dc are turned sideways, insert the hook in between the dc itself. Do this twice per dc) Change direction when you have worked the last side. *

Repeat from * to * for 20 rows.

Ch 2 to start row 21. 1 dc. *2 dc in 1 st*x2. 1 dc in each st until you have 3 sts left. *2 dc in 1 st*x3. Chain 18 (20) 22 to finish and attach to the opposite side with a sl st.

Chart (S)

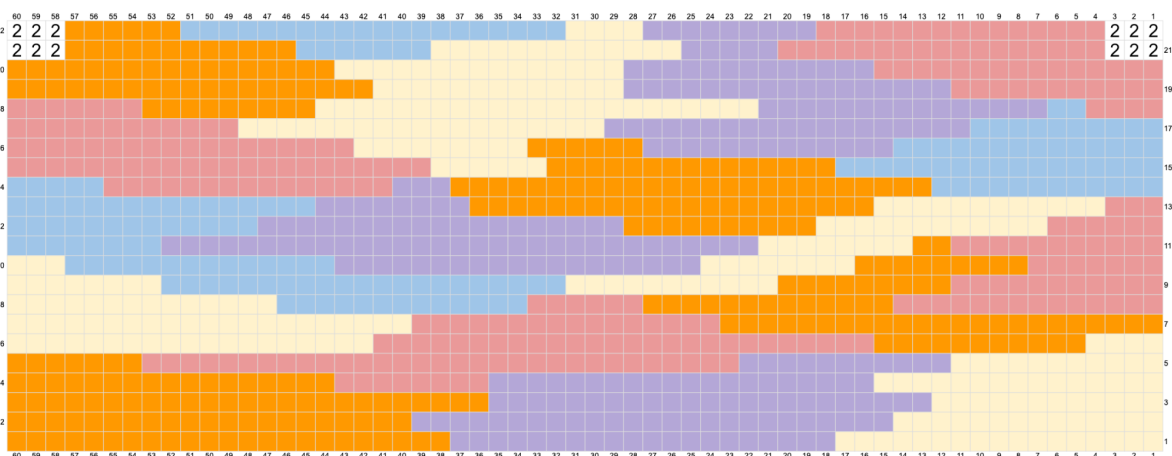


Chart (M)

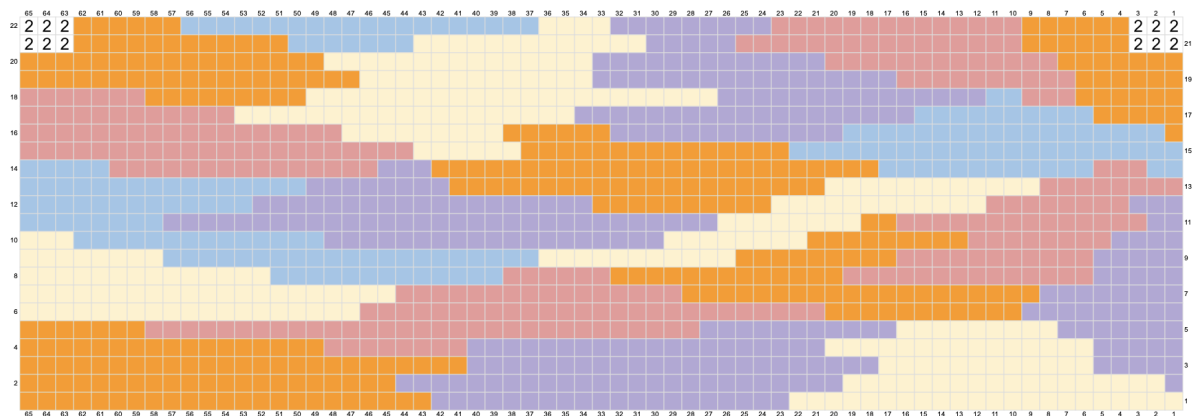
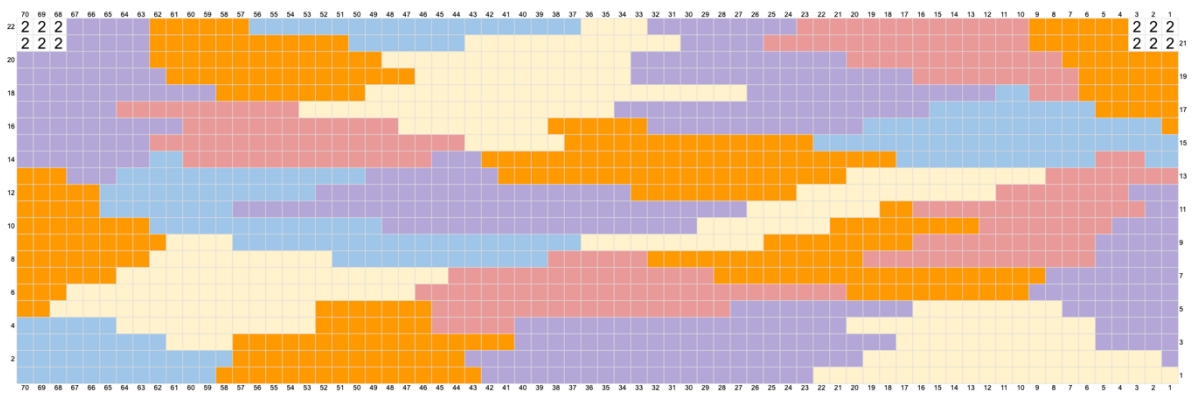


Chart (L)



RIB EDGING

With Powder Blue (20) chain 7 in the before mentioned sl st. Change direction by skipping the st closest to the hook and work sc in all remaining ch. To attach the rib edging to the main part, insert the hook in the st 2nd closest to the edge and make a sl st. Then skip another st and work 1 sl st in ns.

*Turn your work and change direction again. Skip the 2 sl sts and work in the first stitch on the rib edging. Sc in the back loop of the stitches until and including the penultimate stitch. Sc through both loops of the last stitch. Ch 1, turn and change direction. Insert the hook in the 2nd st from the hook in the back loop and continue with sc in each st. Attach the rib edging to the edge of the main part in the same way as before. *
Repeat from * to * all around the main part.

To attach the ends of the rib edging, turn the work inside out. Insert the hook in the st on the opposite side and make a sl st. *
Repeat from * to * up the entire row.
Cut the yarn and pull the tail through the loop to finish.

NECK RIB EDGING

Start with Primrose (32) anywhere in the neck opening. Chain 18. Change direction by skipping the st closest to the hook and work sc in all remaining ch.

To attach the neck rib edging to the edge of the main part, insert the hook in ns on edge and make a sl st. Then skip a st and again insert the hook in ns and make a sl st.

*Turn your work and change direction again. Skip the two sl sts and work in the first stitch on the neck rib edging. Sc in the back loop of the stitches until and including the penultimate stitch. Sc through both loops of the last stitch.

Ch 1, turn and change direction. Insert the hook in the 2nd stitch from the hook in the back loop and continue with sc in 10 sts. Turn and change direction. Work in the same way sc in the back loop of the stitches until and including the penultimate stitch. Sc through both loops of the last st as before.

Ch 1, turn and change direction. Insert the hook in the 2nd st from the hook in the back loop and continue with sc in each st and attach the rib edging to the edge of the main part by inserting the hook in ns on the edge. Make a sl st. Then skip a st on the edge and again insert the hook in ns and make a sl st.

*Turn your work and change direction again. Skip the 2 sl sts and work in the first stitch on the neck rib edging. Sc in the back loop of all the stitches until and including the penultimate stitch. Sc through both loops of the last stitch.

Ch 1, turn and change direction. Insert the hook in the 2nd st from the hook in the back loop and continue with sc in each st and attach the rib edging to the edge of the main part by inserting the hook in ns on the edge and make a sl st. Then skip a st on the edge and again insert the hook in ns and make a sl st. *x2 * repeat from * to * to the end of the round.

To attach the ends of the rib edging, turn the work inside out. Insert the hook in the st on the opposite side and make a sl st. *

Repeat from * to * up the entire row.

Cut the yarn and pull the tail through the loop to finish. Weave in ends.

Enjoy!

Caroline Edal, Tarda Studio

