



CROCHET PATTERN

# Noona

## Sweater

Design: **Caroline Edal, Tarda Studio** | Hobbii Design



## MATERIALS

3 (3) 4 skeins of Rainbow Cotton 8/8 color Army Green (021)  
3 (3) 4 skeins of Rainbow Cotton 8/8 color Light Pink (062)  
3 (3) 4 skeins of Rainbow Cotton 8/8 color Rust (101)  
2 (2) 3 skeins of Rainbow Cotton 8/8 color Dark Brown (008)  
1 (1) 1 skein of Rainbow Cotton 8/8 color Bordeaux (060)  
6 (7) 8 skeins of Rainbow Cotton 8/8 color Beige (004)  
2 (2) 3 skeins of Rainbow Cotton 8/8 color Black (009)

Crochet hook size 3.5 mm (US E/4)

## YARN QUALITY

 **Rainbow Cotton 8/8**, Hobbii  
100% cotton  
50 g = 75 m

## GAUGE

10 x 10 cm (4" x 4")= 20 sts x 10 r in double crochet

## ABBREVIATIONS

dc = double crochet  
ch = chain  
st(s) = stitch(es)  
beg = beginning  
sl st(s) = slip stitch(es)  
rnd = round  
\*...\* = repeat around  
\*...\* X = repeat X times

## SIZES

S (M) L

## MEASUREMENTS

**Length:** 47 (49) 51 cm / 18.5" (19.3") 20"  
**Width:** 40 (44) 48 cm / 15.7" (17.3") 18.9"

## PATTERN INFORMATION

The Noona Sweater exudes both coziness and comfort. Based on 4 large Granny Squares in burnt colors, the look is unique and modern. If you want an oversized look, go up a size.

## HASHTAGS FOR SOCIAL MEDIA

#hobbiidesign #hobbiinoona  
#hobbiichristmascollection

## QUESTION

If you have any questions regarding this pattern, please feel free to email us at [support@hobbii.com](mailto:support@hobbii.com)

Please make sure to include the pattern's name and number.

Happy Crafting!

# Pattern



## INFO AND TIPS

The Noona Sweater is made up of 4 granny squares on both front and back panels with matching neck collar, bottom edge, trumpet sleeves, and side panels and shoulder panels depending on size. Work the 4 granny squares first, followed by the shoulder and side panels if needed, then add the bottom edge. Afterwards, work the neckline and finish with sleeves.

Note that the 1st dc at the beginning of a round is replaced with a ch 3, and the round is finished with a slip stitch in the 3rd chain at the beginning of the round. Furthermore, rnd 10 of the granny square is used for assembling.

## FRONT PANEL

### Granny square bottom left (when wearing the sweater)

(See the crochet chart for "Granny square bottom" on the picture below)

Start with Black (009)

Rnd 1: Ch 5 and join into a ring with a sl st. Now, ch 3, work 2 dc into the ring, ch 3, \*3 dc into the ring, ch 3\* x 3. Join with a sl st in the 3rd ch at the beg of the round.

Rnd 2: Ch 4. \*Make a corner consisting of 3 dc in the same ch sp, ch 3, 3 dc in the same ch sp as the previous 3 dc.

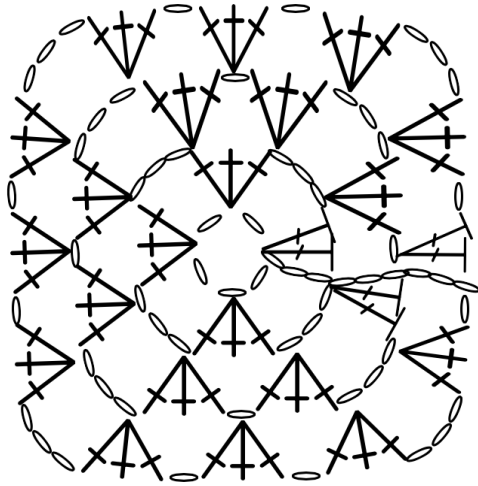
Now, ch 1\* x3, 3 dc in the same ch sp, ch 3, 2 dc in the same ch sp as the previous 3 dc. Join with a sl st in the 3rd ch at the beg of the round.

Rnd 3: Ch 3. Work 2 dc in the same ch sp, ch 1, \*3 dc in the same ch sp, ch 3, 3 dc in the same ch sp as the previous 3 dc, ch 1, 3 dc in the same ch sp, ch 1\* x3, make a corner consisting of 3 dc in the same ch sp, ch 3, 3 dc in the same ch sp as the previous 3 dc, ch 1. Join with a sl st in the 3rd ch at the beg of the round.

Rnd 4: repeat rnd 3 but add another group of 1 dc + ch 1 in the new ch spaces.

Rnds 5-9: work in the same way. Rnds 5 & 6 in Rust (101), rnds 7 & 8 in Light Pink (062) and rnd 9 in Dark Brown (008). Don't break the yarn as rnd 10 (Dark Brown (008)) is also used for assembling (see assembling section).

## CROCHET CHART - GRANNY SQUARE BOTTOM



### Granny square bottom right (when wearing the sweater)

Repeat the above procedure in Light Pink (062), Dark Brown (008), Rust (101) & Army Green (021) in the mentioned order. (Light Pink (062) innermost and Army Green (021) outermost)

### Granny square top right (when wearing the sweater)

(See the crochet chart for the neckline in "Granny square top right" on the picture below)

Rnds 1-4: Repeat the above procedure in Rust (101)

Rnds 5-6: Switch to Army Green (021) and continue the pattern

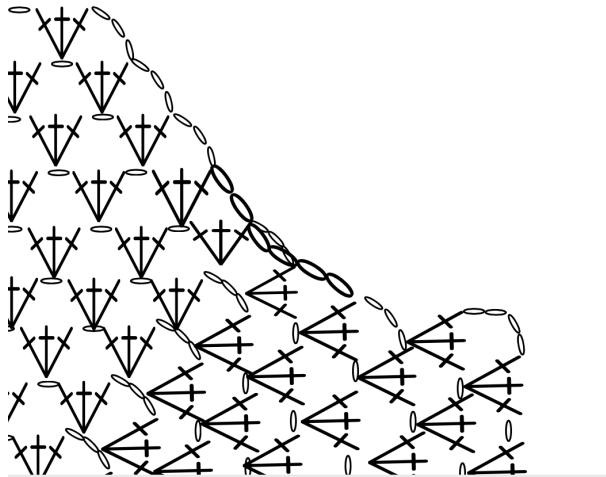
Rnd 7: Switch to Dark Brown (008) and select a corner on the square that will be part of the neck opening for the collar. Work the entire round until you reach the selected corner. I.e., omit the corner: "3 dc in the same ch sp, ch 3, 3 dc in the same ch sp as the previous 3 dc". Instead, ch 3 and pass the whole hook through the corner of the ch sp of rnd 6. Ch another 3 (to create a kind of chain of 6 sts) and continue the pattern as before to the end of rnd 7.

Rnd 8: Again, work the entire round until you reach the next to last ch sp at the corner. Work 3 dc in the ch sp and ch 3. End with a sl st in the 1st ch of the corner of rnd 7. Break off the yarn. Start with ch 3 in the 6th ch of rnd 7 and work to the end of rnd 8.

Rnd 9: Switch to Light Pink (062). Again, work the entire round until you reach the last ch sp at the corner. Work 3 dc in the ch sp and break off the yarn. Start with ch 3 in the 3rd ch of rnd 8 and work to the end of rnd 9.

Rnd 10: Again, work the entire round until you reach the next to last ch sp at the corner. (Remember to assemble to the other pieces on rnd 10 - see "ASSEMBLING") Work 3 dc in the ch sp and ch 4. End with a sl st in the 3rd dc in of the corner of rnd 9.

## CROCHET CHART - GRANNY SQUARE TOP



### Granny square top left (when wearing the sweater)

Repeat the above procedure reversed to the left in Army Green (021), Light Pink (062), Black (009) & Rust (101) in the mentioned order. (Army Green (021) innermost and Rust (101) outermost).

## ASSEMBLING

Rnd 10 on each of the 4 Granny Squares on both front and back panels are used for assembling. Work the round in the same way as before. However, at each ch sp, pass the hook all the way through a ch sp on rnd 10 of the opposite piece (e.g., rnd 10 on "Granny square bottom right" is worked in the ch sp with rnd 10 on "Granny square top right"), chaining as usual. Assemble the front and back panels alike.

When assembling the front and back panels at the shoulder and the side of the bottom squares, do it in the same way passing the whole hook through the opposite ch. However, be careful to note if you need to add side and shoulder panels before assembling the front and back panels. (Read "SIDE PANEL" and "SHOULDER PANEL" to check)

## SIDE PANEL

**NOTE! Skip "SIDE PANEL" for size small.**

Work the equivalent of 0 (2) 4 rnds in Black (009) starting at the bottom of the left "side" of the "Granny Square bottom left" and at the top of the right "side" of "Granny Square bottom right" (when wearing the sweater) in Light Pink (062). Start with ch 3, 2 dc in the same ch, \*ch 1, 3 dc in the same ch\*x10. Break off the yarn. Start in the 3rd ch at the beg of the previous rnd using the same color as the previous ch 4, \*3 dc in the same ch, ch 1\*x10, end at the last dc of the previous rnd. Break off the yarn.

NOTE! Work another 2 rnds in the same way on each side for size large (bottom left in Rust (101) and bottom right in Dark Brown (008)).

## SHOULDER PANEL

**NOTE! Skip "SHOULDER PANEL" for size small.**

Work in the same way the side that will correspond to the shoulder. I.e., the equivalent of 0 (2) 4 rnds in Army Green (021) starting at the left side of "Granny Square top left" and at the right side of "Granny Square top right" (when wearing the sweater) in Rust (101).

Start with ch 3, 2 dc in the same ch, \*ch 1, 3 dc in the same ch\*x5.

To end the round, ch 3 in the last dc on the previous round. Break off the yarn. Start in the 3rd ch at the beg of the previous rnd using the same color as the previous ch 4, \*3 dc in the same ch, ch 1\*x5. To end the round, ch 3 in the last dc on the previous round. Break off the yarn.

NOTE! Work another 2 rnds in the same way on each shoulder for size large. (Top left in Light Pink (062) and top right in Army Green (021).

## BACK PANEL

Follow the exact same procedure as for the sections **“FRONT PANEL”, “SIDE PANEL”, “SHOULDER PANEL” & “ASSEMBLING”**.

## NECKLINE

Start in Beige (004) at the top right (when wearing the sweater) of the front panel: “Granny Square top right” (= the side of the sweater).

Rnd 1: work 1 dc decrease in each st.

Rnds 2-5: work 1 dc in each st.

Rnd 6: switch to Bordeaux (060) and work 1 dc in each st. Break off the yarn.

## BOTTOM EDGE

Start in Beige (004) at the bottom right (when wearing the sweater) of the front panel: “Granny Square bottom right” (= the side of the sweater)

Rnd 1: work 1 dc and 1 dc decrease alternating

Rnds 2-6: work 1 dc in each st.

Rnd 7: Switch to color Bordeaux (060). Break off the yarn.

## SLEEVES

Start in Beige (004) at the bottom right of the front panel’s “Granny Square top right” (= the middle of the length on the sweater at the right side)

Rnd 1: work 1 dc and 1 dc decrease alternating

Rnd 2: work 1 dc in each stitch and until the piece measures 47 (49) 51 cm, switch color as you work when appropriate. End with a round in Bordeaux (060). Break off the yarn.

Weave in ends.

## Enjoy!

Caroline Edal, Tarda Studio

