

# Pattern Isabella Wrap



Knit with Go handmade's Tencel Bamboo "fine"  
- its fibers are naturally silky soft and smooth  
- which just makes the thread particularly delicate: 40% Tencel/60% Bamboo, 50 g/210 m.

## YARN USAGE

Size 75 x 85 cm

Tencel Bamboo "fine": 300 g

Double pointed needles: 2,5 mm

Gauge: 30 sts moss stitch/10 cm



## YARN USAGE

Tencel Bamboo "fine"

300 g

## MATERIAL

Double pointed needles (DPN's): 2,5 mm

Gauge: 30 sts moss stitch/10 cm

*Specified yarn quantities are indicative.*

## Tencel Bamboo "fine"

- a sustainable yarn

Tencel is an organic sustainable natural material made from wood chips, primarily from beech trees and eucalyptus. The tree is FSC certified and comes from natural thinning of forests and remains from other tree productions.

**Uniqueness** - Yarn made of Tencel and bamboo fibers is by nature both silky soft and smooth - this makes the thread particularly delicate, indeed unique and exciting to work with. The thread can be spun looser than others, which is a natural part of its character. The finished result is so delicious.

Children will love this yarn - it will be difficult to find another yarn that is as gentle and soft to the skin as Tencel Bamboo.

40% Tencel/60% Bamboo, 50 g/210 m.

Go handmade  
quality design in a unique style



## ABBREVIATIONS AND DEFINITIONS

st(s)	Stitch(es)
k	Knit
p	Purl
RS	Right side
WS	Wrong side
yo	yarn over
sl3wyif	Slip 3 sts purlwise, with yarn in front.
tbl	Through the back loop
M1R	Knit the horizontal thread between 2 sts from the front tbl.
M1L	Knit the horizontal thread between 2 sts from the back tbl.
CABLE6F	Slip 3 sts on a cable needle and hold in front of work, k3, k3 sts from cable needle.
CABLE6B	Slip 3 sts on a cable needle and hold in back of work, k3, k3 sts from cable needle.
k2tog	Decrease. Knit 2 sts together
p2tog	Decrease. Purl 2 sts together
SKPO	Slip 1 st, k1, pass slipped st over.
SLPPO	Wrong side: slip 1 st purlwise with yarn in front, p1 and pass slipped st over.
SSSP2	Slip 2 st knitwise (one at the time). Move both back to left needle and p2tog tbl.
{ ... }	The instructions shown in these brackets must be repeated for the whole row or with the number indicated after x.
(..)	At the end of the line, specifies the number of sts on the needle.
[..]	Chart

UK

## ISABELLA WRAP

Cast on 223 sts and k back and forth as described:

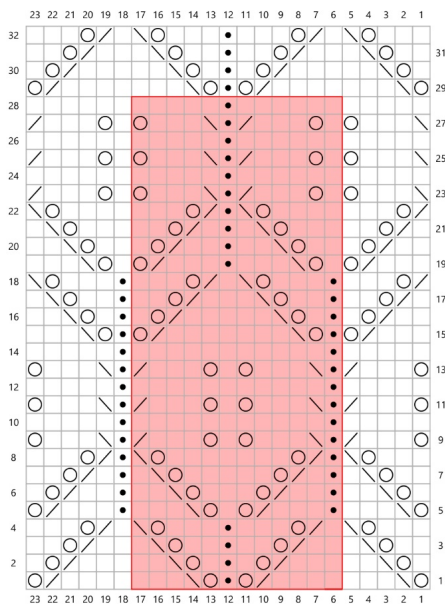
- 1.) WS sl3wyif, p until 3 sts remain, sl3wyif.
  - 2.) RS k3, p1, k2, M1R, k3, p1, {k1 + p1}, repeat until 11 sts remain, k1, p1, k3, M1L, k2, p1, k3. (225)
  - 3.) sl3wyif, k1, p6, k1, {k1, p1}, repeat until 12 sts remain, k1, k1, p6, k1, sl3wyif.
  - 4.) k3, p1, k6, p1, {k1 + p1}, repeat until 12 sts remain, k1, p1, k6, p1, k3.
  - 5.) sl3wyif, k1, p6, k1, {k1, p1}, repeat until 12 sts remain, k1, k1, p6, k1, sl3wyif.
  - 6.) k3, p1, CABLE6F, p1, {k1 + p1}, repeat until 12 sts remain, k1, p1, CABLE6B, p1, k3.
3. - 6.) Repeat 7 more times.

### Knit the next WS as described:

sl3wyif, k1, p6, k1, {k1 + p1} x 14,  
k1, p until 41 sts remain, p1,  
{k1 + p1} x 14, k2, p6, k1, sl3wyif.

Now knit with the mid-section according to chart  
(the bold text of the pattern):

## CHART FOR MID SECTION



- Right side: k  
Wrong side: p
- Right side: p  
Wrong side: k
- yo
- Right side: k2tog  
Wrong side: SLPPO
- Right side: SKPO  
Wrong side: SSSP2
- Repeat

- 1.) k3, p1, k6, p1, {k1 + p1} x 14, k2,  
[yo, SKPO, k3, {k4, k2tog, yo, p1, yo,  
SKPO, k3}], Repeat until 47 sts remain,  
k4, k2tog, yo],  
k1, {k1 + p1} x 14, k1, p1, k6, p1, k3.
- 2.) sl3wyif, k1, p6, k1, {k1 + p1} x 14, k1,  
p1,  
[p1, yo, SLPO, p3, {p2, SSSP2, yo, p1,  
k1, p1, yo, SLPO, p3}], Repeat until  
46 sts remain, p2, SSSP2, yo, p1],  
p1, {k1 + p1} x 14, k2, p6, k1, sl3wyif.
- 3.) k3, p1, CABLE6F, p1, {k1 + p1} x 14,  
k2,  
[k2, yo, SKPO, k1, {k2, k2tog, yo, k2,  
p1, k2, yo, SKPO, k1}], Repeat until 47 sts  
remain, k2, k2tog, yo, k2],  
k1, {k1 + p1} x 14, k1, p1, CABLE6B,  
p1, k3.
- 4.) sl3wyif, k1, p6, k1, {k1 + p1} x 14,  
k1, p1,  
[p3, yo, SLPO, p1, {SSSP2, yo, p3, k1,  
p3, yo, SLPO, p1}], Repeat until 46 sts  
remain, SSSP2, yo, p3],  
p1, {k1 + p1} x 14, k2, p6, k1, sl3wyif.
- 5.) k3, p1, k6, p1, {k1 + p1} x 14, k2,  
[yo, SKPO, k3, {p1, k3, k2tog, yo,  
k1, yo, SKPO, k3}], Repeat until 47 sts  
remain, p1, k3, k2tog, yo],  
k1, {k1 + p1} x 14, k1, p1, k6, p1, k3.
- 6.) sl3wyif, k1, p6, k1, {k1 + p1} x 14,  
k1, p1,  
[p1, yo, SLPO, p2, k1, {p2, SSSP2, yo,  
p3, yo, SLPO, p2, k1}], Repeat until
- 7.) k3, p1, CABLE6F, p1, {k1 + p1} x 14, k2,  
[k2, yo, SKPO, k1, {p1, k1, k2tog, yo,  
k5, yo, SKPO, k1}], Repeat until 47 sts  
remain, p1, k1, k2tog, yo, k2],  
k1, {k1 + p1} x 14, k1, p1, CABLE6B,  
p1, k3.
- 8.) sl3wyif, k1, p6, k1, {k1 + p1} x 14,  
k1, p1,  
[p3, yo, SLPO, k1, {SSSP2, yo, p7, yo,  
SLPO, k1}], Repeat until 46 sts remain,  
SSSP2, yo, p3],  
p1, {k1 + p1} x 14, k2, p6, k1, sl3wyif.
- 9.) k3, p1, k6, p1, {k1 + p1} x 14, k2,  
[yo, k3, k2tog, {p1, SKPO, k3, yo,  
k1, yo, k3, k2tog}], Repeat until 47 sts  
remain, p1, SKPO, k3, yo],  
k1, {k1 + p1} x 14, k1, p1, k6, p1, k3.
- 10.) sl3wyif, k1, p6, k1, {k1 + p1} x 14,  
k1, p1,  
[p5, k1, {p11, k1}], Repeat until 46 sts  
remain, p5],  
p1, {k1 + p1} x 14, k2, p6, k1, sl3wyif.
- 11.) k3, p1, CABLE6F, p1, {k1 + p1} x 14, k2,  
[yo, k3, k2tog, {p1, SKPO, k3, yo,  
k1, yo, k3, k2tog}], Repeat until 47 sts  
remain, p1, SKPO, k3, yo],  
k1, {k1 + p1} x 14, k1, p1, CABLE6B,  
p1, k3.
- 12.) sl3wyif, k1, p6, k1, {k1 + p1} x 14,  
k1, p1,

- [p5, k1, {p11, k1}, Repeat until 46 sts remain, p5],  
p1, {k1 + p1} x 14, k2, p6, k1, sl3wyif.
- 13.) k3, p1, k6, p1, {k1 + p1} x 14, k2,  
[yo, k3, k2tog, {p1, SKPO, k3, yo,  
k1, yo, k3, k2tog}, Repeat until 47 sts  
remain, p1, SKPO, k3, yo],  
k1, {k1 + p1} x 14, k1, p1, k6, p1, k3.
- 14.) sl3wyif, k1, p6, k1, {k1 + p1} x 14,  
k1, p1,  
[p5, k1, {p11, k1}, Repeat until 46 sts  
remain, p5],  
p1, {k1 + p1} x 14, k2, p6, k1, sl3wyif.
- 15.) k3, p1, CABLE6F, p1, {k1 + p1} x 14, k2,  
[k3, k2tog, yo, {p1, yo, SKPO, k7, k2tog,  
yo}, Repeat until 47 sts remain, p1, yo,  
SKPO, k3],  
k1, {k1 + p1} x 14, k1, p1, CABLE6B,  
p1, k3.
- 16.) sl3wyif, k1, p6, k1, {k1 + p1} x 14,  
k1, p1,  
[p2, SSSP2, yo, p1, k1, {p1, yo, SLPPO,  
p5, SSSP2, yo, p1, k1}, Repeat until  
46 sts remain, p1, yo, SLPPO, p2],  
p1, {k1 + p1} x 14, k2, p6, k1, sl3wyif.
- 17.) k3, p1, k6, p1, {k1 + p1} x 14, k2,  
[k1, k2tog, yo, k2, {p1, k2, yo, SKPO,  
k3, k2tog, yo, k2}, Repeat until 47 sts  
remain, p1, k2, yo, SKPO, k1],  
k1, {k1 + p1} x 14, k1, p1, k6, p1, k3.
- 18.) sl3wyif, k1, p6, k1, {k1 + p1} x 14,  
k1, p1,
- [SSSP2, yo, p3, k1, {p3, yo, SLPPO, k1,  
SSSP2, yo, p3, k1}, Repeat until 46 sts  
remain, p3, yo, SLPPO],  
p1, {k1 + p1} x 14, k2, p6, k1, sl3wyif.
- 19.) k3, p1, CABLE6F, p1, {k1 + p1} x 14, k2,  
[k3, k2tog, yo, {k1, yo, SKPO, k3,  
p1, k3, k2tog, yo}, Repeat until 47 sts  
remain, k1, yo, SKPO, k3],  
k1, {k1 + p1} x 14, k1, p1, CABLE6B,  
p1, k3.
- 20.) sl3wyif, k1, p6, k1, {k1 + p1} x 14,  
k1, p1,  
[p2, SSSP2, yo, p2, {p1, yo, SLPPO, p2,  
k1, p2, SSSP2, yo, p2}, Repeat until  
46 sts remain, p1, yo, SLPPO, p2],  
p1, {k1 + p1} x 14, k2, p6, k1, sl3wyif.
- 21.) k3, p1, k6, p1, {k1 + p1} x 14, k2,  
[k1, k2tog, yo, k2, {k3, yo, SKPO, k1,  
p1, k1, k2tog, yo, k2}, Repeat until  
47 sts remain, k3, yo, SKPO, k1],  
k1, {k1 + p1} x 14, k1, p1, k6, p1, k3.
- 22.) sl3wyif, k1, p6, k1, {k1 + p1} x 14,  
k1, p1,  
[SSSP2, yo, p4, {p3, yo, SLPPO, k1,  
SSSP2, yo, p4}, Repeat until 46 sts  
remain, p3, yo, SLPPO],  
p1, {k1 + p1} x 14, k2, p6, k1, sl3wyif.
- 23.) k3, p1, CABLE6F, p1, {k1 + p1} x 14, k2,  
[SKPO, k3, yo, {k1, yo, k3, k2tog,  
p1, SKPO, k3, yo}, Repeat until 47 sts  
remain, k1, yo, k3, k2tog],  
k1, {k1 + p1} x 14, k1, p1, CABLE6B,  
p1, k3.

24.) sl3wyif, k1, p6, k1, {k1 + p1} x 14, k1, p1, [p6, {p5, k1, p6}, Repeat until 46 sts remain, p5], p1, {k1 + p1} x 14, k2, p6, k1, sl3wyif.

25.) k3, p1, k6, p1, {k1 + p1} x 14, k2, [SKPO, k3, yo, {k1, yo, k3, k2tog, p1, SKPO, k3, yo}, Repeat until 47 sts remain, k1, yo, k3, k2tog], k1, {k1 + p1} x 14, k1, p1, k6, p1, k3.

26.) sl3wyif, k1, p6, k1, {k1 + p1} x 14, k1, p1, [p6, {p5, k1, p6}, Repeat until 46 sts remain, p5], p1, {k1 + p1} x 14, k2, p6, k1, sl3wyif.

27.) k3, p1, CABLE6F, p1, {k1 + p1} x 14, k2, [SKPO, k3, yo, {k1, yo, k3, k2tog, p1, SKPO, k3, yo}, Repeat until 47 sts remain, k1, yo, k3, k2tog], k1, {k1 + p1} x 14, k1, p1, CABLE6B, p1, k3.

28.) sl3wyif, k1, p6, k1, {k1 + p1} x 14, k1, p1, [p6, {p5, k1, p6}, Repeat until 46 sts remain, p5], p1, {k1 + p1} x 14, k2, p6, k1, sl3wyif.

1. - 28.) Repeat 10 more times.

#### Finish the chart as follows:

29.) RS k3, p1, k6, p1, {k1 + p1} x 14, k2, [yo, SKPO, k3, {k4, k2tog, yo, p1, yo, SKPO, k3}, Repeat until 47 sts remain, k4, k2tog, yo], k1, {k1 + p1} x 14, k1, p1, k6, p1, k3.

30.) WS sl3wyif, k1, p6, k1, {k1 + p1} x 14, k1, p1, [p1, yo, SLPPO, p3, {p2, SSSP2, yo, p1, k1, p1, yo, SLPPO, p3}, Repeat until 46 sts remain, p2, SSSP2, yo, p1], p1, {k1 + p1} x 14, k2, p6, k1, sl3wyif.

31.) k3, p1, CABLE6F, p1, {k1 + p1} x 14, k2, [k2, yo, SKPO, k1, {k2, k2tog, yo, k2, p1, k2, yo, SKPO, k1}, Repeat until 47 sts remain, k2, k2tog, yo, k2], k1, {k1 + p1} x 14, k1, p1, CABLE6B, p1, k3.

32.) sl3wyif, k1, p6, k1, {k1 + p1} x 14, k1, p1, [p3, yo, SLPPO, p1, {SSSP2, yo, p3, k1, p3, yo, SLPPO, p1}, Repeat until 46 sts remain, SSSP2, yo, p3], p1, {k1 + p1} x 14, k2, p6, k1, sl3wyif.

#### After the chart has been completed, continue as follows:

1.) RS k3, p1, k6, p1, {k1 + p1} x 14, k until 40 sts remain, {p1 + k1} x 14, k1, p1, k6, p1, k3.

2.) WS sl3wyif, k1, p6, k1, {k1 + p1}, repeat until 12 sts remain, k2, p6, k1, sl3wyif.

3.) k3, p1, CABLE6F, p1, {k1 + p1}, repeat until 12 sts remain, k1, p1, CABLE6B, p1, k3.

4.) sl3wyif, k1, p6, k1, {k1 + p1}, repeat until 12 sts remain, k2, p6, k1, sl3wyif.

5.) k3, p1, k6, p1, {k1 + p1}, repeat until 12 sts remain, k1, p1, k6, p1, k3.

6.) sl3wyif, k1, p6, k1, {k1 + p1}, repeat until 12 sts remain, k2, p6, k1, sl3wyif.

3. - 6.) Repeat 7 more times.

**Then continue as follows:**

RS k3, p1, k2, k2tog, k2, p1, {k1 + p1}, repeat until 12 sts remain, k1, p1, k2, k2tog, k2, p1, k3. (223)

WS sl3wyif, p until 3 sts remain, sl3wyif.

## LACE EDGING

**Continue with the lace edging:**

1.) RS p1, k3, k2tog, {p2, k4}, repeat until 1 st remains, p1. (222)

2.) WS k1, {p4, k2}, repeat until 12 sts remain, p4, k1.

3.) p1, {k2, yo, k2, p2}, repeat until 5 sts remain, k2, yo, k2, p1. (+ 37 sts = 259 sts)

4.) k1, {p5, k2}, repeat until 6 sts remain, p5, k1.

5.) p1, {k2, yo, k1, yo, k2, p2}, repeat until 6 sts remain, k2, yo, k1, yo, k2, p1. (+ 74 sts = 333 sts)

6.) k1, {p7, k2}, repeat until 8 sts remain, p7, k1.

7.) p1, {k2, yo, k3, yo, k2, p2}, repeat until 8 sts remain, k2, yo, k3, yo, 2r, p1. (+ 74 sts = 407 sts)

8.) k1, {p9, k2}, repeat until 10 sts remain, p9, k1.

9.) p1, {k2, yo, k5, yo, k2, p2}, repeat until 10 sts remain, k2, yo, k5, yo, 2r, p1. (+ 74 sts = 481 sts)

10.) k1, {p11, k2}, repeat until 12 sts remain, p11, k1.

11.) p1, {k2, yo, k7, yo, k2, p2}, repeat until 12 sts remain, k2, yo, k7, yo, 2r, p1. (+ 74 sts = 555 sts)

12.) k1, {p13, k2}, repeat until 14 sts remain, p13, k1.

13.) p1, {k13, p2}, repeat until 14 sts remain, k13, p1.

14.) Bind off: {k2tog tbl, slide the resulting st back to the left needle}.

**Lace edging opposite side:**

Knit up the 223 sts from the RS of our cast on edge.

Cut the yarn and start knitting from RS:

Repeat 1. - 14.) from the previous lace edging.

## ASSEMBLY

*Carefully weave in all loose ends on the WS.*

*Steam or block the Wrap to shape.*

## FINISHED MEASURES

75 x 85 cm



# Good to know

## Needle Size & Tension

Knitters knit very differently: some knit with a needle size 2,0 mm and obtain the same size of design quality as a person who knits with a needle size 4,0 mm. We owe this knowledge to the team of knitters who join us.

The key to knit a specific size is a lot about the knitting style/hands/skills, rather than the size of needles.

Therefore, we will recommend a range of needle sizes.



# Go handmade

quality design in a unique style