



Lea - Tube Scarf

No. 2013-201-6282

Materials

6 skeins of Baby merino XL col. 39
Knitting needle US size 7 (4.5 mm)

Yarn Quality

Baby merino XL, Hobbii
100% Superwash merino/
1.8 oz. (50 g) = 114.8 yards (105 m)

Knitting gauge

20 stitches and 34 rows on 4" (10 cm) on
US needle 7 (4.5 mm) in pattern

Hashtags for social media

#hobbiidesign #hobbiilea

Buy the yarn here

<http://shop.hobbii.com/lea-tube-scarf>

Size

Onesize

Measurements

Width: 24.8 inches (63 cm) measured lying
double

Height: 13.8 inches (35 cm)

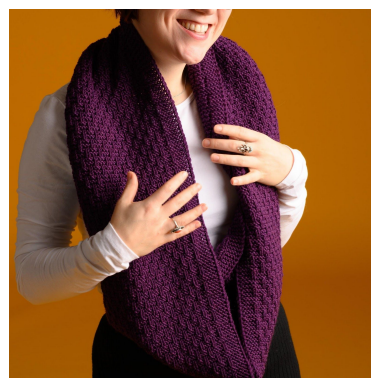
Pattern information

The tube is knitted back and forth on the
knitting needle and lastly it's joined by
sewing.

Abbreviations

RS: right side

WS: wrong side



Happy knitting!

Pattern

Cast on 66 stitches loosely on knitting needle US size 7 (4.5 mm).

Knit back and forth on the needle in pattern like this:

1. **row RS:** knit until you have 1 stitch left, slip 1 stitch purlwise with the yarn in front of your work.
2. **row WS:** knit 5, *purl 1, knit 3* repeat from * - * until you have 5 stitches left on the needle, knit 4, slip 1 stitch purlwise with the yarn in front of your work.
3. **row:** knit until you have 1 stitch left, slip 1 stitch purlwise with the yarn in front of your work.
4. **row:** knit 5, *purl 1, knit 3* repeat from * - * until you have 5 stitches left on the needle, knit 4, slip 1 stitch purlwise with the yarn in front of your work.
5. **row:** knit until you have 1 stitch left, slip 1 stitch purlwise with the yarn in front of your work.
6. **row:** knit 7, *purl 1, knit 3* repeat from * - * until you have 7 stitches left on the needle, knit 1, purl 1, knit 4, slip 1 stitch purlwise with the yarn in front of your work.
7. **row:** knit until you have 1 stitch left, slip 1 stitch purlwise with the yarn in front of your work.
8. **row:** knit 7, *purl 1, knit 3* repeat from * - * until you have 7 stitches left on the needle, knit 1, purl 1, knit 4, slip 1 stitch purlwise with the yarn in front of your work.

Repeat row pind 1 - 8 until your work measures 49.2 inches (125 cm).

Finish with the 8th row.

Assembly

Don't fasten off, but sew the stitches together with the cast on edge.

NOTE! Please note that your work shouldn't twist. It should be sewn together lying flat.