



Kawaii Ice Cream - Pillow

No. 1011-194-2392

Level: Advanced

Measurements pillow: 50 x 50 cm

Crochet hook: 3,5 mm

Materials: Inlay pillow 42 cm, Pompom Maker 45 mm.

Abbreviations:

RS - right side

WS - wrong side

Sl st - slip stitch

Sc - single crochet

Dc - double crochet

Ch – chain stitch

S(ts) – stitch(es)

Yarn: Hobbii Amigo

Usage:

White (#1) - 1 ball

Black (#12) - 1 ball

Neon pink (#55) - 1 ball

Violet (#60) - 4 balls

Petunia Pink (#56) - 2 balls

Light Peach (#46) - 1 ball

Mint (#29) - 1 ball

Purchase yarn and accessories here:

<http://shop.hobbii.com/kawaii-ice-cream-pillow>

This pillow is worked using the “corner to corner-technique” also known as: “C2C”.
The pattern contains a diagram and a description of each row. In this way you can keep track of how many pixels you need to work in each color. If no number is mentioned after the color, then you only need to work it once. The arrows in the written description shows in which direction you work. You begin in the right corner.

It's a good idea to bind off the ends as you go, so you don't need to bind off a ton of ends when finished ☺

If you find it difficult to keep track of the different yarn balls and to avoid that it tangles, then it's a good idea to wind some of the yarn up and attach it on clothespins. In this way you can easily keep the colors, you don't use, in place on the pins, while you're working.

You can find instruction video's for the techniques used in this pattern here:

Slip stitch - <https://www.youtube.com/watch?v=R5YrNUL84rg>

Single crochet - <https://www.youtube.com/watch?v=AERuDONab00>

Double crochet - https://www.youtube.com/watch?v=bx_5eCfONmk

Front

- ← **Row 1 [RS]:** Violet
- **Row 2 [WS]:** (Violet) x 2
- ← **Row 3 [RS]:** (Violet) x 3
- **Row 4 [WS]:** (Violet) x 4
- ← **Row 5 [RS]:** (Violet) x 5
- **Row 6 [WS]:** (Violet) x 6
- ← **Row 7 [RS]:** (Violet) x 7
- **Row 8 [WS]:** (Violet) x 8
- ← **Row 9 [RS]:** (Violet) x 9
- **Row 10 [WS]:** (Violet) x 10
- ← **Row 11 [RS]:** (Violet) x 11
- **Row 12 [WS]:** (Violet) x 12
- ← **Row 13 [RS]:** (Violet) x 13
- **Row 14 [WS]:** (Violet) x 14
- ← **Row 15 [RS]:** (Violet) x 15
- **Row 16 [WS]:** (Violet) x 16
- ← **Row 17 [RS]:** (Violet) x 17
- **Row 18 [WS]:** (Violet) x 18
- ← **Row 19 [RS]:** (Violet) x 16, (Light peach) x 2, Violet
- **Row 20 [WS]:** Violet, (Light peach) x 4, (Violet) x 15
- ← **Row 21 [RS]:** (Violet) x 14, (Light peach) x 5, (Violet) x 2
- **Row 22 [WS]:** (Violet) x 2, (Light peach) x 7, (Violet) x 13
- ← **Row 23 [RS]:** (Violet) x 12, (Light peach) x 8, (Violet) x 3

- **Row 24 [WS]:** (Violet) x 4, (Light peach) x 9, (Violet) x 11
- ← **Row 25 [RS]:** (Violet) x 10, (Light peach) x 11, (Violet) x 4
- **Row 26 [WS]:** (Violet) x 5, (Light peach) x 11, (Mint green) x 2, (Violet) x 8
- ← **Row 27 [RS]:** (Violet) x 8, (Mint green) x 3, (Light peach) x 10, (Violet) x 6
- **Row 28 [WS]:** (Violet) x 6, (Light peach) x 10, Mint green, Neon pink, (Mint green) x 2, (Violet) x 8
- ← **Row 29 [RS]:** (Violet) x 9, Mint green, (Neon pink) x 2, Mint green, (Light peach) x 9, (Violet) x 7
- **Row 30 [WS]:** (Violet) x 8, (Light peach) x 9, Mint green, Neon pink, (Mint green) x 2, (Violet) x 9
- ← **Row 31 [RS]:** (Violet) x 9, (Mint green) x 2, (Black) x 2, Mint green, (Light peach) x 9, (Violet) x 8
- **Row 32 [WS]:** (Violet) x 9, (Light peach) x 9, (Black) x 3, (Mint green) x 2, (Violet) x 9
- ← **Row 33 [RS]:** (Violet) x 8, (Petunia pink) x 2, (Mint green) x 2, (Black) x 2, (Mint green) x 3, (Light peach) x 6, (Violet) x 10
- **Row 34 [WS]:** (Violet) x 10, (Light peach) x 6, (Mint green) x 3, Black, White, Black, Mint green, (Petunia pink) x 3, (Violet) x 8
- ← **Row 35 [RS]:** (Violet) x 8, (Petunia pink) x 4, Mint green, (Black) x 2, (Mint green) x 4, (Light peach) x 5, (Violet) x 11

Corner

- **Row 36 [WS]:** (Violet) x 12, (Light peach) x 4, (Mint green) x 2, (Black) x 2, (Mint green) x 3, (Petunia pink) x 4, (Violet) x 8

Corner

- ← **Row 37 [RS]:** (Violet) x 7, (Petunia pink) x 4, (Mint green) x 5, Black, Mint green, (Light peach) x 5, (Violet) x 11
- **Row 38 [WS]:** (Violet) x 11, (Light peach) x 4, (Mint green) x 7, (Petunia pink) x 5, (Violet) x 6
- ← **Row 39 [RS]:** (Violet) x 6, (Petunia pink) x 4, (Mint green) x 5, Black, Mint green, (Light peach) x 4, (Violet) x 11
- **Row 40 [WS]:** (Violet) x 10, (Light peach) x 2, (Mint green) x 7, (Petunia pink) x 7, (Violet) x 5
- ← **Row 41 [RS]:** (Violet) x 5, (Petunia pink) x 7, (Mint green) x 3, (Black) x 2, (Mint green) x 2, Light peach, (Violet) x 10
- **Row 42 [WS]:** (Violet) x 10, Mint green, Neon pink, (Black) x 3, (Mint green) x 2, (Petunia pink) x 8, (Violet) x 4
- ← **Row 43 [RS]:** (Violet) x 4, (Petunia pink) x 8, (Mint green) x 2, (Black) x 2, (Neon pink) x 2, Mint green, (Violet) x 9
- **Row 44 [WS]:** (Violet) x 9, Mint green, Neon pink, Black, White, Black, (Mint green) x 2, (Petunia pink) x 8, (Violet) x 3
- ← **Row 45 [RS]:** (Violet) x 3, (Petunia pink) x 8, (Mint green) x 2, (Black) x 2, (Mint green) x 3,

(Violet) x 8

- **Row 46 [WS]:** (Violet) x 8, (Mint green) x 7, (Petunia pink) x 8, (Violet) x 2
- ← **Row 47 [RS]:** (Violet) x 2, (Petunia pink) x 10, (Mint green) x 4, (Violet) x 8
- **Row 48 [WS]:** (Violet) x 9, (Mint green) x 2, (Petunia pink) x 10, (Violet) x 2
- ← **Row 49 [RS]:** Violet, (Petunia pink) x 11, Mint green, (Violet) x 9
- **Row 50 [WS]:** (Violet) x 9, (Petunia pink) x 11, Violet
- ← **Row 51 [RS]:** Violet, (Petunia pink) x 10, (Violet) x 9
- **Row 52 [WS]:** (Violet) x 8, (Petunia pink) x 10, Violet
- ← **Row 53 [RS]:** Violet, (Petunia pink) x 9, (Violet) x 8
- **Row 54 [WS]:** (Violet) x 8, (Petunia pink) x 8, Violet
- ← **Row 55 [RS]:** (Violet) x 2, (Petunia pink) x 5, (Violet) x 9
- **Row 56 [WS]:** (Violet) x 15
- ← **Row 57 [RS]:** (Violet) x 14
- **Row 58 [WS]:** (Violet) x 13
- ← **Row 59 [RS]:** (Violet) x 12
- **Row 60 [WS]:** (Violet) x 11
- ← **Row 61 [RS]:** (Violet) x 10
- **Row 62 [WS]:** (Violet) x 9
- ← **Row 63 [RS]:** (Violet) x 8
- **Row 64 [WS]:** (Violet) x 7
- ← **Row 65 [RS]:** (Violet) x 6
- **Row 66 [WS]:** (Violet) x 5
- ← **Row 67 [RS]:** (Violet) x 4
- **Row 68 [WS]:** (Violet) x 3
- ← **Row 69 [RS]:** (Violet) x 2
- **Row 70 [WS]:** Violet

Back

- **Row 1 [WS]:** Violet
- ← **Row 2 [RS]:** (Violet) x 2
- **Row 3 [WS]:** (Violet) x 3
- ← **Row 4 [RS]:** (Violet) x 4
- **Row 5 [WS]:** (Petunia pink) x 5
- ← **Row 6 [RS]:** (Petunia pink) x 6
- **Row 7 [WS]:** (Petunia pink) x 7
- ← **Row 8 [RS]:** (Petunia pink) x 8
- **Row 9 [WS]:** (Violet) x 9
- ← **Row 10 [RS]:** (Violet) x 10
- **Row 11 [WS]:** (Violet) x 11
- ← **Row 12 [RS]:** (Violet) x 12

- Row 13 [WS]: (Mint green) x 13
- ← Row 14 [RS]: (Mint green) x 14
- Row 15 [WS]: (Mint green) x 15
- ← Row 16 [RS]: (Mint green) x 16
- Row 17 [WS]: (Violet) x 17
- ← Row 18 [RS]: (Violet) x 18
- Row 19 [WS]: (Violet) x 19
- ← Row 20 [RS]: (Violet) x 20
- Row 21 [WS]: (Petunia pink) x 21
- ← Row 22 [RS]: (Petunia pink) x 22
- Row 23 [WS]: (Petunia pink) x 23
- ← Row 24 [RS]: (Petunia pink) x 24
- Row 25 [WS]: (Violet) x 25
- ← Row 26 [RS]: (Violet) x 26
- Row 27 [WS]: (Violet) x 27
- ← Row 28 [RS]: (Violet) x 28
- Row 29 [WS]: (Mint green) x 29
- ← Row 30 [RS]: (Mint green) x 30
- Row 31 [WS]: (Mint green) x 31
- ← Row 32 [RS]: (Mint green) x 32
- Row 33 [WS]: (Violet) x 33
- ← Row 34 [RS]: (Violet) x 34
- Row 35 [WS]: (Violet) x 35
- ← Row 36 [RS]: (Violet) x 36

Corner

- Row 37 [WS]: (Petunia pink) x 35
- ← Row 38 [RS]: (Petunia pink) x 34
- Row 39 [WS]: (Petunia pink) x 33
- ← Row 40 [RS]: (Petunia pink) x 32
- Row 41 [WS]: (Violet) x 31
- ← Row 42 [RS]: (Violet) x 30
- Row 43 [WS]: (Violet) x 29
- ← Row 44 [RS]: (Violet) x 28
- Row 45 [WS]: (Mint green) x 27
- ← Row 46 [RS]: (Mint green) x 26
- Row 47 [WS]: (Mint green) x 25
- ← Row 48 [RS]: (Mint green) x 24
- Row 49 [WS]: (Violet) x 23
- ← Row 50 [RS]: (Violet) x 22
- Row 51 [WS]: (Violet) x 21
- ← Row 52 [RS]: (Violet) x 20

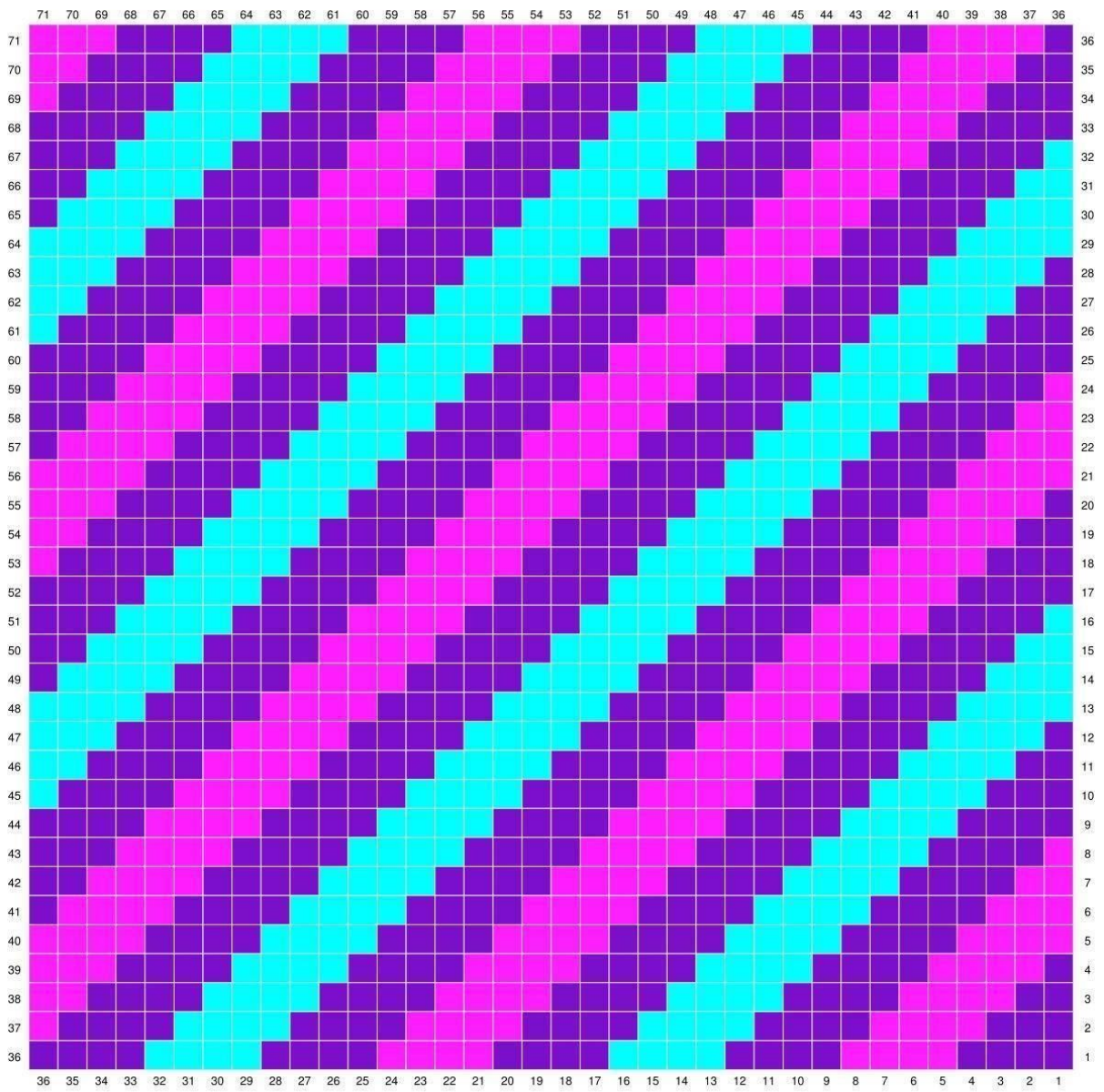
- Row 53 [WS]: (Petunia pink) x 19
- ← Row 54 [RS]: (Petunia pink) x 18
- Row 55 [WS]: (Petunia pink) x 17
- ← Row 56 [RS]: (Petunia pink) x 16
- Row 57 [WS]: (Violet) x 15
- ← Row 58 [RS]: (Violet) x 14
- Row 59 [WS]: (Violet) x 13
- ← Row 60 [RS]: (Violet) x 12
- Row 61 [WS]: (Mint green) x 11
- ← Row 62 [RS]: (Mint green) x 10
- Row 63 [WS]: (Mint green) x 9
- ← Row 64 [RS]: (Mint green) x 8
- Row 65 [WS]: (Violet) x 7
- ← Row 66 [RS]: (Violet) x 6
- Row 67 [WS]: (Violet) x 5
- ← Row 68 [RS]: (Violet) x 4
- Row 69 [WS]: (Petunia pink) x 3
- ← Row 70 [RS]: (Petunia pink) x 2
- Row 71 [WS]: Petunia pink

Have fun making this pillow :-)

Super Cute Design







CORNER TO CORNER

Row 1



1. Ch 5.



2. Work 1 double crochet in 3rd ch.



3. Work dc in each of the next 2 ch st. You have now worked your first pixel.

Row 2



1. Ch 5.



2. Work 1 dc in 3rd ch from hook.



3. Work 1 dc in each of the next 2 ch. You have now worked one more pixel.



4. Now you need to work this pixel together with the first pixel. Begin by turning the pixel around and work 1 sl st on the left side of the first pixel. On the photo you can see how they are worked together.



5. Ch 2 (replaces first double crochet).



6. Work 3 dc in ch-space where you worked the sl st. You now have 2 pixels on row 2.

Row 3



1. Ch 5.



2. Work a dc in 3rd ch from hook and then 1 dc in each of the last 2 ch.



3. Work 1 sl st in pixel below.

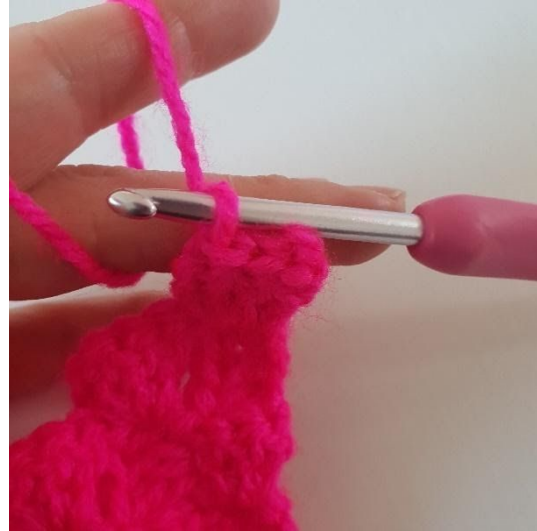


4. Ch 2 and work 3 dc in ch-space, where you worked 1 sl st.



5. Work 1 sl st in next pixel. Ch 2 and work 3 dc in ch-space, where you worked the last sl st. You now have 3 pixels and row 3 is finished.

Corner decreases



1. Instead of finishing the row with ch 5, you work 3 sl st alongside the last pixel.



2. Continue working pixels on entire row.

3. Here you see how you can decrease on the row. If you need to decrease at the end of a row, you work the pixels together with 1 sl st.

Assembly



1. Lay the pieces on top of each other. Pull yarn through 2 pixels.

2. Ch 2.

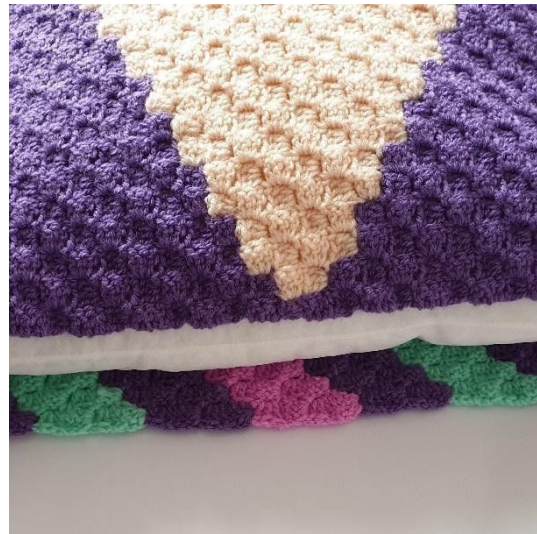


3. Work 1 sc in between the next 2 pixels.

4. Repeat ch 2 and 1 sc between the pixels.



5. Work 1 sc in the corner. Continue with ch 2 and 1 sc around the edge of the pillow.



6. Place the inlay pillow in the cover. Continue closing the cover, finish with 1 sl st.



Make 4 pompons.



Sew a pompon on to each corner of the pillow.