



# Erantis Christening Robe

No. 2003-194-1071

## Materials

7 (8) 9 skeins of 50 g Rainbow Organic, color 02

Circular needle 3 mm, 80 cm  
Double pointed needles 3 mm  
Crochet hook 3 mm  
5 buttons, 15 mm Ø

## Size

62 (68) 74 cm/ 3 (6) 9 months

## Measurements

Length: 120 (120) 120 cm  
Width at chest: 22 (23) 25 cm

Buy the yarn here:

<http://shop.hobbii.com/erantis-christening-robe>

## Difficulty

Medium

## Knitting gauge

26 sts = 10 cm  
34 rows = 10 cm

1 pattern repeat measures about 4.5 cm

## Pattern information

The christening robe is worked top down with raglan sleeves. It is worked flat, open in the back and is closed with buttons.

The buttonholes are crocheted along the edge at the back.



Enjoy!

## Pattern instructions

### Body

Cast on 66 (72) 78 sts.

Partition the work by placing markers: Back: 12 (13) 14 sts,

Sleeve: 9 (10) 11 sts, Front: 24 (26) 28 sts, Sleeve: 9 (10) 11 sts,

Back: 12 (13) 14 sts.

Work stockinette stitch in the flat on the circular needle.

### Raglan sleeves

Increases are worked on each side of the markers to create the raglan sleeves. Increase with m1: picking up the bar between sts and knitting it:

The raglan increases are worked with 2 sts between increases: k until 1 st before the marker, m1, k2, m1. Repeat this at all markers on right side rows until you have increased 15 (16) 17 times = 186 (200) 214 sts.

### Body

Place the 39 (42) 45 sts of the sleeves on a stitch holder and let rest.

Work in the flat. Cast on 3 (3) 3 new sts under each sleeve = 114 (122) 130 sts. Continue in stockinette stitch until the work measures 12 (13) 14 cm from the shoulder.

### Skirt

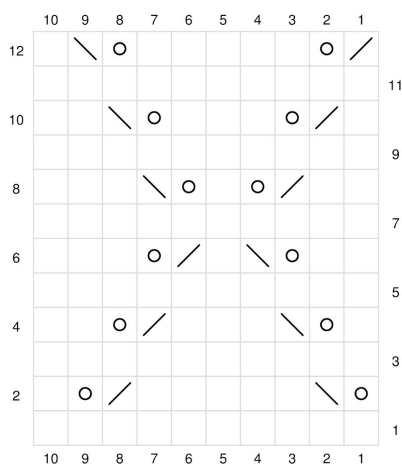
Increase 5 (7) 9 sts evenly on the first row by picking up the bar between sts and knitting them = 119 (129) 139 sts.


Increase row: work 2 edge sts, \*k1, m1 \*, repeat between \*\* until you have two sts left on the needle, work 2 edge sts = 234 (254) 274 sts.

Work the pattern diagram in the flat. The edge sts are not shown in the diagram.

The pattern is worked on all right side rows. Wrong side rows are purled.

## Diagram



 k on right side, p on wrong side

 ssk

 k2tog

 yo

The diagram is repeated 23 (25) 27 times for the width.

Work as such until the robe measures 115 cm from the shoulder.

End with row 6 or 12 from the diagram, so that it ends like it begins.

Make 4 rows of garter stitch and bind off.

Do not cut the yarn. Use the loop from the last open st to crochet around the edge.

### Crochet edge

The edge is made with a row of sc around the entire edge, with buttonholes in the body/yoke.

Sc along the left side of the back and around the neckline. 5 buttonhole loops are worked along the upper part of the right back edge like so:

Make 1 sc at the neck for the first buttonhole, then \* ch 1, skip 1 st \*. Repeat between \*\* until you have five buttonhole loops evenly distributed along the edge of the stockinette part.

Continue working sc along the edge until you reach the first st of the round. Join, cut and weave in ends.

Sew on the buttons across from the buttonhole loops.

### **Sleeves**

Place the sleeve sts back on the needle. Pick up 3 (3) 3 sts under the arm in the cast on sts for the body. Work in the round in stockinette stitch.

Mark the middle stitch under the sleeve. Decreases are worked on either side of this stitch.

Decrease every 2 cm by knitting until 2 sts before the marked st. Ssk, k1 (marked st), k2tog.

Work in stockinette until the sleeve measures 11 (13) 15 cm from the armhole beginning

Work 6 rows of garter stitch.

Bind off and weave in ends.