



Krokus Christening Robe

No. 2003-194-9892

Materials

7 (8) 9 skeins, 50 g Alpaca Silk,
Hobbii, color 01

Circular needle 3 mm, 80 cm
Double pointed needles 3 mm
Crochet hook 3 mm
5 buttons, 15 mm Ø

Size

62 (68) 74 cm/ 3 (6) 9 mos

Measurements:

Length: 120 (120) 120 cm

Width at chest: 22 (23) 25 cm

Buy the yarn here

<http://shop.hobbii.com/krokus-christening-robe>

Difficulty

Medium

Knitting gauge

26 sts = 10 cm

34 rows = 10 cm

1 pattern repeat measures about 4.5 cm

Pattern information

The christening robe is worked top down with raglan increases, The robe is knit in the flat, open along the back, and it closed with buttons. The buttonholes are crocheted as an edge along the back.

On right side rows, the edge stitches are slipped purlwise with yarn to the back of the work.

On wrong side rows, the edge stitches are slipped purlwise with the yarn in front of the work.



Enjoy!

Pattern instructions

Body

Cast on 66 (72) 78 sts.

Partition the work by placing markers: Back: 12 (13) 14 sts,
Sleeve: 9 (10) 11 sts, Front: 24 (26) 28 sts, sleeve: 9 (10) 11 sts,
back: 12 (13) 14 sts.

Work flat in stockinette stitch on the circular needle.

Raglan increases

Increases are worked on each side of the markers to create the raglan sleeves. Increase with m1: picking up the bar between sts and knitting it tbl:

The raglan increases are worked with 2 sts between increases: k until 1 st before the marker, m1, k2, m1. Repeat this at all markers on right side rows until you have increased 15 (16) 17 times = 186 (200) 214 sts.

Body

Place the 39 (42) 45 sts of the sleeves on a stitch holder and let rest.

Work in the flat. Cast on 3 (3) 3 new sts under each sleeve = 114 (122) 130 sts. Continue in stockinette stitch until the work measures 12 (13) 14 cm from the shoulder.

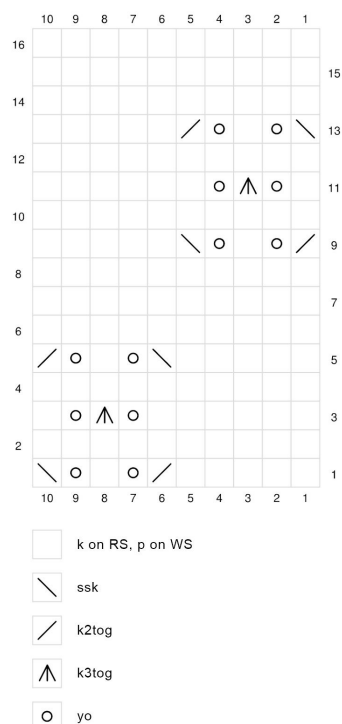
Skirt

Increase 5 (7) 9 sts evenly on the first row by picking up the bar between sts and knitting it tbl = 119 (129) 139 sts.

Increase row: work 2 edge sts, * k1, m1 *, repeat between ** until there are 2 sts left on the needle, work 2 edge sts = 234 (254) 274 sts.

Work flat in pattern as shown in diagram. The edge sts are not shown in the diagram. The pattern is worked on all right side rows. All wrong side rows are purled.

Diagram



The diagram is repeated 23 (25) 27 times for the width.

Work as such until the robe measures 115 cm from the shoulder.

Make 2 rows of garter stitch and bind off.

Do not cut the yarn. Use the loop from the last open st to crochet around the edge.

Crochet edge

The edge is made with a row of sc around the entire edge, with buttonholes in the body/yoke.

Sc along the left side of the back and around the neckline. 5 buttonhole loops are worked along the upper part of the right back edge like so:

Make 1 sc at the neck for the first buttonhole, then * ch 1, skip 1 st *. Repeat between ** until you have five buttonhole loops evenly distributed along the edge of the stockinette part.

Continue working sc along the edge until you reach the first st of the round. Join, cut and weave in ends.

Sew on the buttons across from the buttonhole loops.

Sleeves

Place sleeve sts back on the needle. Pick up 3 (3) 3 sts in the sts in the sts cast on for the body. Work 4 rounds of garter stitch (purl 1 round, knit 1 round, p 1 round, k 1 round). Bind off and weave in ends.