



# Bodil - Top-down Sweater

No. 2004-194-5173

**Materials**

7 (7) 8 (8) 9 balls of 50 g Baby Wool  
col. 24

Circular needle 80 cm, size 3 mm (US 2,5)  
Stitch markers  
Stitch holder with wire, 2 pcs.

**Yarn**

Baby Wool, Happy Sheep  
100% wool / 50 g = 165 meters

**Gauge**

26 stitches x 32 rounds/rows in  
stockinette stitch = 10 x 10 cm

**Hashtags for social media**

#hobbiidesign #hobbiibodil

**Purchase your yarn here:**

<http://shop.hobbii.com/bodil-top-down-sweater>

**Size**

XS (S) M (L) XL

**Measurements**

Width: 44 (46) 48 (51) 54 cm  
Length: 58 (59) 61 (63) 65 cm

**Pattern Information**

This sweater is worked top-down.  
Work short rows in the back to create a  
better fit. The sweater has a yoke and  
raglan sleeves. The piece is separated  
in body and sleeves and finished  
separately.  
When only one number is mentioned, it  
applies to all sizes.

Technique video's

**German Short Rows -**

<https://www.youtube.com/watch?v=4Bz7YhiXuA8>

**Magic Loop -**

<https://www.youtube.com/watch?v=FlLalfMHMg>



Have fun making this sweater!

## Pattern

### Rib

CO 152 stitches for all sizes on the circular needle and work in the round.

Work 2 cm rib; knit 1, purl 1.

### Insert a marker around the stitches marking the raglan, as follows:

Insert a marker around the 1<sup>st</sup> stitch, count 26 (24) 22 (20) 18 stitches and insert a marker around next stitch, count 48 (50) 52 (54) 56 stitches and insert a marker around next stitch, count 26 (24) 22 (20) 18 stitches and insert a marker around next stitch, count 48 (50) 52 (54) 56 stitches until 1<sup>st</sup> marker.

You now have 26 (24) 22 (20) 18 stitches for each sleeve and 48 (50) 52 (54) 56 stitches for the back- and front piece and 4 marked stitches.

**Please note!** The round begins between back piece and left sleeve.

### Yoke

#### The neckline is shaped with short rows.

Insert a marker in the middle of front piece.

Work German Short Rows, and increase for raglan as follows:

**Row 1, RS:** knit until 18 stitches remain before marker in the middle of front piece. Slip stitch and turn,

**Row 2, WS:** purl until 18 stitches remain before marker in front piece, slip stitch and turn,

**Row 3, RS:** \*knit until raglan marker, make 1 stitch knitwise, knit 1, make 1 stitch knitwise\*, repeat from \* to \* by the 4 raglan markers, knit until 12 stitches remain before marker in the middle of front piece. Slip stitch and turn = 8 stitches increased,

**Row 4, WS:** purl until 12 stitches remain before marker in front piece, slip stitch and turn,

**Row 5, RS:** \*knit until raglan marker, make 1 stitch knitwise, knit 1, make 1 stitch knitwise\*, repeat from \* to \* by the 4 raglan markers, knit until 6 stitches remain before marker in the middle of front piece. Slip stitch and turn,

**Row 6, WS:** purl until 6 stitches remain before marker in front piece, slip stitch and turn.

**Row/round 7, RS:** work all stitches in stockinette stitch in the round and continue increasing around each raglan marker.

Insert a marker on each side of the 22 stitches in the middle of the front piece. The lace pattern is worked over these stitches. See diagram.

**Please note!** After a couple of rounds, you will see 1 stitch between the increases in each raglan. If you want, you may move the markers gradually.

Continue increasing in every 2<sup>nd</sup> round until you have 84 (86) 88 (92) 96 stitches on each sleeve and 106 (112) 118 (126) 134 stitches on the back- and front piece plus the 4 marked stitches.

Finish at the beginning of the round, after 1 round without increasing.

### Now you separate the piece into body and sleeves.

Slip the stitches for both sleeves on to a stitch holder with wire and work the remaining stitches for the body as follows:

Slip the stitches for the sleeve on to a stitch holder, CO 6 stitches with the knitted cast on-technique, work the front piece, slip the stitches for the second sleeve on to a stitch holder, CO 6 stitches and work the back piece = 228 (240) 252 (268) 284 stitches.

### **Body**

Continue working in the round in stockinette stitch and the lace pattern in the front until piece measures approx. 30 cm from armhole, finish after the 10<sup>th</sup> row on diagram.

### **Rib**

Work 5 cm rib; knit 1, purl 1. BO in rib.

### **Sleeves**

Place the stitches from a sleeve back on to the circular needle and pick up 6 stitches from armhole = 90 (92) 94 (98) 102 stitches.

Work stockinette stitch in the round using the Magic Loop-technique. Insert a marker in the middle under the sleeve (in the middle of the 6 new stitches).

Work 4 rounds.

**Round with decrease:** work until 3 stitches remains before marker, knit 2 together, knit 2, knit 2 together TBL and work the rest of the round.

Decrease like this in every 8<sup>th</sup> round until you have 60 (62) 64 (66) 68 stitches.

Continue working stockinette stitch until piece measures 38-40 cm from armhole.

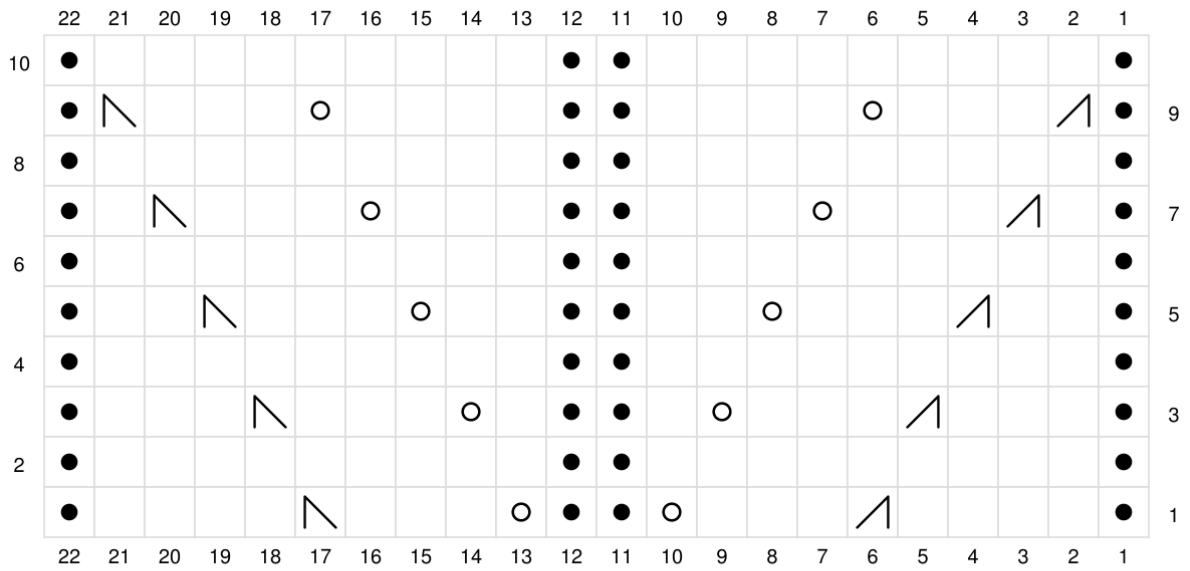
Decrease 6 stitches evenly in next round.

### **Rib**

Work 5 cm rib, knit 1, purl 1. BO in elastic bind-off.

Work the other sleeve in the same way.

## Diagram



- Knit
- Purl
- ↗ Knit 2 together
- ↘ SSK or k2tog TBL
- Yarn over