



# Liv - Bucket Hat

No. 1004-194-4060

## Materials

1 (1, 1, 2) skeins of 1.8 (50 g) Rainbow 8/4, color 27

Crochet hook US size E/4 (3,5 mm)  
3 buttons

## Yarn Quality

Rainbow 8/4, Hobbii  
100% cotton, 50 g = 170 m

## Crochet Gauge

18 dc and 11 rows on 4" (10 cm)

## Sizes

2 (4, 6, 8) years

## Measurements

Diameter 18.5 (19.7, 20.9, 22) inches  
(47 (50, 53, 56) cm)

Buy the yarn here

<http://shop.hobbii.com/liv-bucket-hat>

## Pattern information

The hat is crocheted top-down with a lace pattern on the lower part of the hat. The edge of the hat is crocheted over 2 rounds. You work a foundation chain (a cord) as a way to adjustment the diameter.

This hat matches the girl's top: Liv.

## Abbreviations and explanations

**ch:** chain stitches

**dc:** double crochet stitches

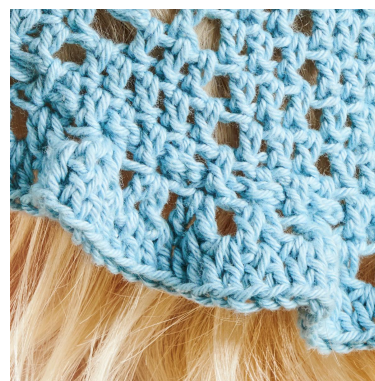
**ss:** slip stitches

**hole:** ch1, skip 1 stitch, 1 dc.

**Note:** The double crochet stitches are worked into dc, except with the ch-space where the dc is worked into the hole, so the hole is enhanced. This is not described in the chart.

Hashtags for social media

#hobbiidesign #hobbiiliv



## Pattern

Work a magic ring and ch 3 and 11 dc into the ring = 12 stitches.

Join all rounds with 1 ss and ch 3.

### All sizes

- 1. rnd:** work 2 dc in each stitch = 24 sts.
- 2. rnd:** \*work 2 dc in the 1st s, 1 dc\*, around = 36 sts.
- 3. rnd:** \*work 2 dc in the 1st s, 2 dc\*, around = 48 sts.
- 4. rnd:** \*work 1 dc in each dc\*, around = 48 sts.
- 5. rnd:** \*work 2 dc in the 1st s, 3 dc\*, around = 60 sts.
- 6. rnd:** \*work 2 dc in the 1st s, 4 dc\*, around = 72 sts.
- 7. rnd:** \*work 2 dc in the 1st s, 5 dc\*, around = 84 sts = 18.5 inches (47 cm) in diameter = size 4 years.

### Only size 6 years

- 8. rnd:** \*work 2 dc in the 1st s, 13 dc\* around = 90 sts = 19.7 inches (50 cm) in circumference = size 6 years.

### Only sizes 8 and 10 years

- 8. rnd:** \*work 2 dc in the 1st s, 15 dc\* around = 96 sts = 20.9 inches (53 cm) in circumference = size 8 years.

### Only size 10 years

- 9. rnd:** \*work 2 dc in the 1st s, 23 dc\* around = 100 sts = 22 inches (56 cm) in circumference = size 10 years.

Now, you are done increasing and you crochet straight up in a lace pattern.

Work 4 (7, 10, 12) dc, ch 1, skip 1 s, \*18 dc, ch 1, skip 1 s\*, repeat from \* to\* and finish with 3 (6, 9, 11) dc.

Now you should have 5 holes on the round. Continue to follow the chart until the work measures approx. 5.9 (5.9, 6.3, 6.3) inches (15 (15, 16, 16) cm) measured from the top.

### Brim

- 1. rnd:** ch 4, 1 dc in the first s, \*ch 1, skip 1 s, 1 dc, ch 1, 1 dc in the next s\*, repeat from \* to \* around.
  - 2. rnd:** ch 4, \*2 dc in the next ch-space\*, repeat from \* to \* around.
- Weave in the ends.

### Cord

Ch 1 with a yarn tail of approx. 7.9 inches (20 cm). Work a foundation chain (a ch-cord) that is approx. 2 inches (5 cm) longer than the diameter of the hat.

Place a marker on one of the sides of the hat (by the ear).

On the last round of the hat, you use the yarn tail (from the cast on) to sew a button on to the mark and you sew on 2 more buttons (towards the neck).

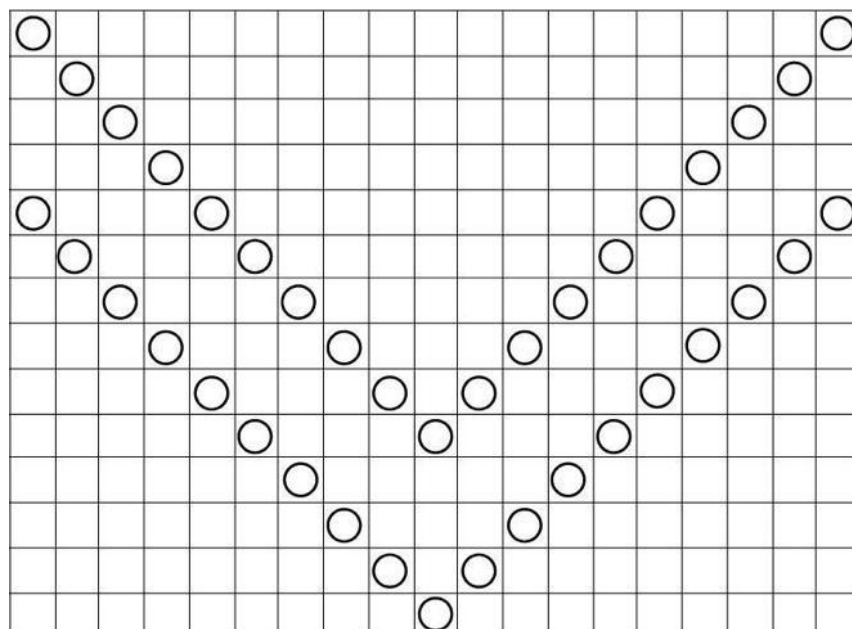


Pull the cord through the holes (towards the neck and then continue around the head and forward to the button).

Fold the end of the yarn cord, so a button loop is created as a button hole, and attach the yarn tail. Button up.

You can now adjust the hat by using the other buttons.

## Chart



□ Double crochet

○ Chain

| Middle stitch

You work dc in the hole/ch-spaces on the next round.