



Tanja Tunic

No. 2004-192-3365

Materials

2 (2, 2, 2, 3, 3) skeins of 7.05 oz. (200 g)
Dolce Cashmere color 02

Double pointed needles US size 4 (3,5 mm),
Circular needle US size 4 (3,5 mm), 31.5
inches (80 cm),
Stitch markers,
Stitch holders

Sizes

XS (S, M, L, XL, XXL)

Measurements

Width: 15.8", (16.5", 18.9", 21.3", 23.6", 26"),
(40 (42, 48, 54, 60, 66) cm)
Length: 22.4", (24", 25.6", 27.2", 28.3", 29.5"),
(57 (61, 65, 69, 72, 75) cm)

Gauge

27 stitches on 4" (10 cm)
31 rounds/rows on 4" (10 cm)

Abbreviations

1 increase:

Make 1 stitch by picking up the
horizontal loop between the stitches
and knit through the back of the stitch.

Pattern information

The yoke is knitted in two similar pieces
from sleeve to the mid front/back where
they are sewn together. Each part is
knitted with its own skein so each part
looks the same. From here, you knit up
stitches to the body and the lap
switching between the two skeins when
knitting to even out the color transitions.

Buy the yarn here:

<http://shop.hobbii.com/tanja-tunic>

Yoke and sleeves

Right sleeve

Knit by pulling the yarn from the center of skein #1.

Cast on 56 (58, 60, 62, 64, 66) stitches on double pointed needles and knit in the round.

Knit 1.6 inches (4 cm) of rib: knit 1, purl 1.

Place a marker at the beginning of the rnd.

Continue in stockinette stitch with increases:

Continue knitting until 1 stitch before the marker, increase 1, knit 2, increase 1, knit the rest of the rnd.

Increase every 8.(8., 8., 6., 6., 5.) rnd until you have 84 (90, 94, 100, 106, 110) stitches.

Knit straight up until the sleeve measures 18.9 (18.9, 18.9, 18.1, 16.9, 15.75) inches (48 (48, 48, 46, 43, 40) cm). Place a marker at the last rnd = armhole.

From here, you knit back and forth on a circular needle over each stitch.

Shoulder

Knit until your work measures 4 (4.3, 4.7, 5.5, 5.9, 6.3) inches (10 (11, 12, 14, 15, 16) cm) from the marker. Finish by working a purl row.

Your work should measure 22.8 (23.2, 23.6, 23.6, 22.8, 22) inches (58 (59, 60, 60, 58, 56) cm) from the cast on edge.

Right front piece

Neckline

1. row, knit row: knit 34 (36, 38, 41, 43, 45) stitches. Put the rest of the stitches on hold.

2. row, purl row: purl.

3. row, knit row: work knit stitch until you have 3 stitches left, knit 2 together, knit 1.

Repeat row 2. and 3. until you have 28 (30, 32, 34, 36, 38) stitches.

Knit straight up until your work measures 7.9 (8.7, 9.4, 10.6, 11.8, 12) inches (20 (22, 24, 27, 30, 33) cm) from the armhole. Place the stitches on a stitch holder.

Your work measures 26.8 (27.6, 28.3, 28.7, 28.7, 28.7) inches (68 (70, 72, 73, 73, 73) cm) from the cast on edge.

Note: The front piece is sewn together with mattress stitches later on. You can also choose to bind off the stitches and then sew the pieces together afterwards using mattress stitches.

Right back

On the right side/knit row, bind off 15 (17, 17, 17, 19, 19) stitches over the shoulder and knit the rest of the row = 35 (37, 39, 42, 44, 46) stitches.

1. row, purl row: purl.

2. row, knit row: k1, knit 2 stitches together through the back loop, finish the knit row with knit stitches.

Decrease every 4. row until you have 32 (34, 36, 38, 40, 42) stitches.

Knit straight up until your work measures 7.9 (8.7, 9.4, 10.6, 11.8, 12) inches (20 (22, 24, 27, 30, 33) cm) from the armhole. Place the stitches on a stitch holder.

Your work measures 26.8 (27.6, 28.3, 28.7, 28.7, 28.7) inches (68 (70, 72, 73, 73, 73) cm) from the cast on edge.

Note: The back is sewn together using mattress stitches later on. You can also choose to bind off the stitches and then sew the pieces together afterwards using mattress stitches.

Left sleeve

Use skein #2. This sleeve is knitted like the right sleeve, but reversed, so the front pieces and the back pieces fit each other.

Assembling the yoke

Sew the pieces together: front piece to front piece and back to back. Sew together/join by using mattress stitches.

Neckline

Knit up stitches in the neck and knit 6 rounds of rib: knit 2, purl 1.

Bind off in rib.

Body

Work from the right side and from armhole to armhole 96 (105, 116, 130, 144, 158) stitches up to the front piece and 96 (105, 116, 130, 144, 158) stitches to the back = 192 (210, 232, 260, 288, 316) stitches.

1. rnd: purl.

2. rnd: purl

3. rnd: *increase 1, knit 8*, repeat from * to * until the end of the rnd = 216 (236, 260, 292, 324, 356) stitches.

Continue in stockinette stitch until your work measures 11.4 (12.2, 13, 13.8, 14.2, 14.6) inches (29 (31, 33, 35, 36, 37) cm) of armhole.

Note:

Sizes XS – L: From here, you knit 1 rnd using skein #1, and 1 rnd using skein #2 to even out the color transition.

Sizes XL – XXL: From here, you knit 1 rnd using skein #1, and 1 rnd using skein #2 to even out the color transition towards the lap. Now, you use skein #3.

Lap**Knit a round of decreases like this:**

1. rnd: *knit 2 together, k8*, repeat from * to * until the end of the rnd = 195 (213, 234, 263, 292, 321) stitches.
2. rnd: purl.
3. rnd: purl.
4. rnd: knit.

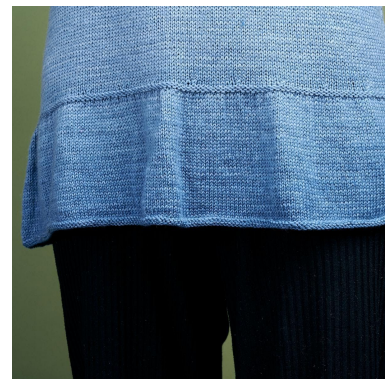
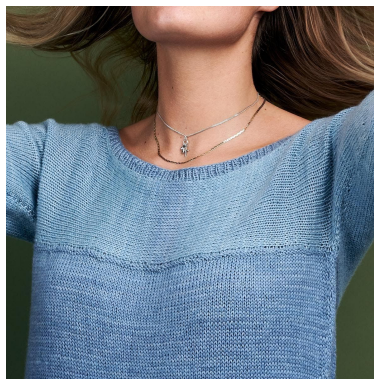
Knit a round of increases like this:

knit 2, increase 1, repeat from * to * until the end of the rnd = 297 (319, 351, 367, 438, 477) stitches.

Continue in stockinette stitch until the lap measures 4 (4.3, 4.7, 5.1, 5.5, 5.9) inches (10 (11, 12, 13, 14, 15) cm).

Work 2 rounds of purl stitches.

Bind off loosely knitwise from the wrong side.



Please provide us with the name and the number of the pattern.

Happy knitting!

#hobbiidesign #tanjatunic