



# Power Poncho

No. 2003-183-7585

## Materials:

8 skeins of 100 g Woolpower- color 2  
Circular needles US 8 (5 mm), 30 in.  
Cable needle

## Gauge:

18 stitches per 4 inches  
24 rows per 4 inches

## Finished Size:

Each piece measures approx. 20 x 37 ½ in.

## Pattern Information:

The poncho is knit flat on circular needles.

The cable is knit from the chart.

After the pieces are knit, they are sewn together as shown in the diagram.

Once the pieces are sewn together, pick up stitches to knit the collar.

Purchase the yarn here:

<http://shop.hobbii.com/power-poncho-us>

## Poncho

CO 100 sts on US 8 (5mm) needles

Place a marker after 30 sts. These first 30 stitches are the cable section. The rest of the piece is double seed stitch.

On each row, slip the first stitch purlwise.

Starting with a WS row:

Row 1: Sl1, K cable pattern from chart, \*K2,P2\* to the last stitch, K1.

Row 2: Sl1, \*K2, P2\* to marker, K cable pattern from chart.

Row 3: Sl1, K cable pattern from chart, \*P2, K2\* to the last stitch, P1.

Row 4: Sl1, \*P2, K2\* to marker, K cable pattern from chart.

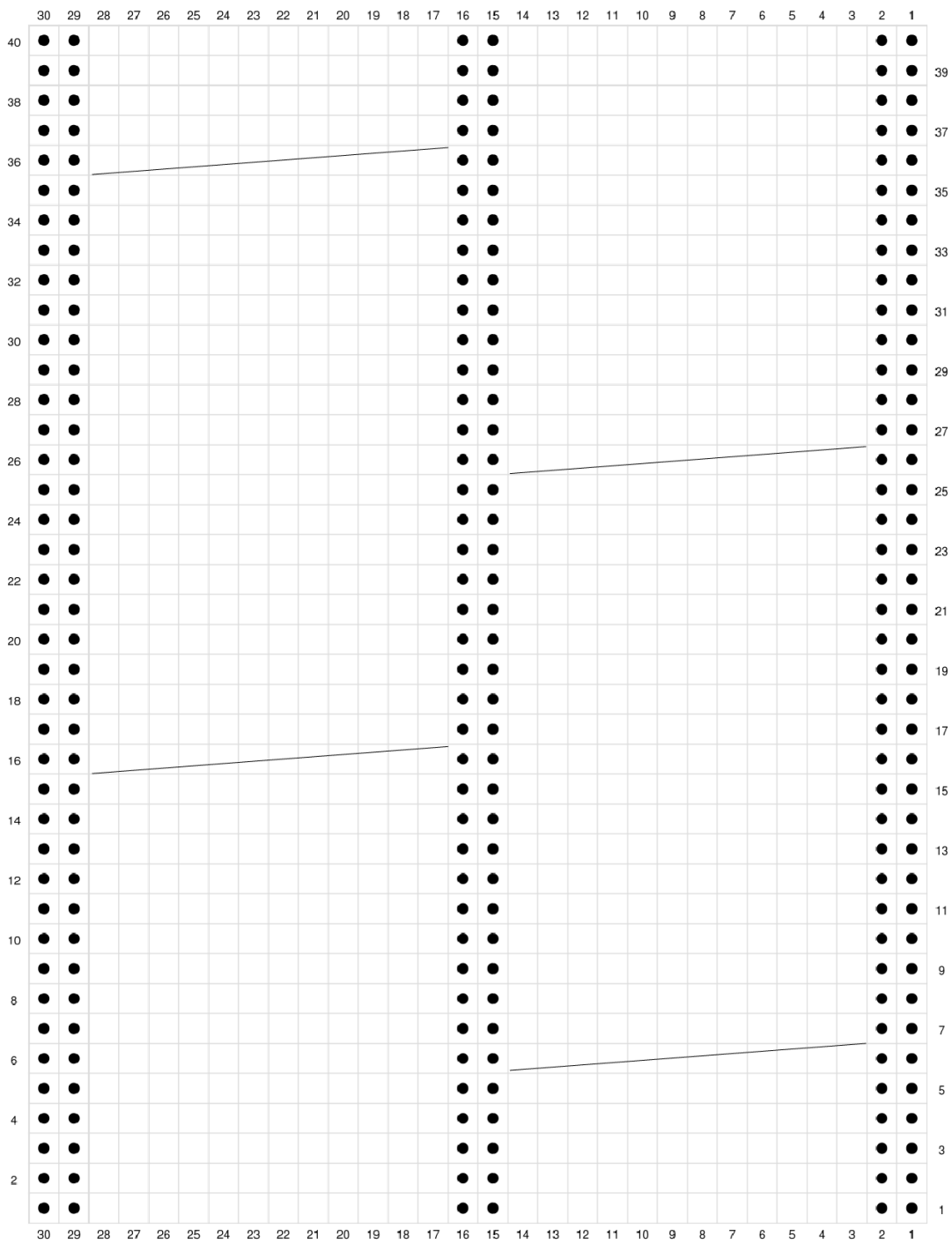
Repeat these 4 rows until piece measures 37 ½ inches.

Bind off in double seed stitch.

Repeat to make a second piece that matches.

### Chart

See the next page.



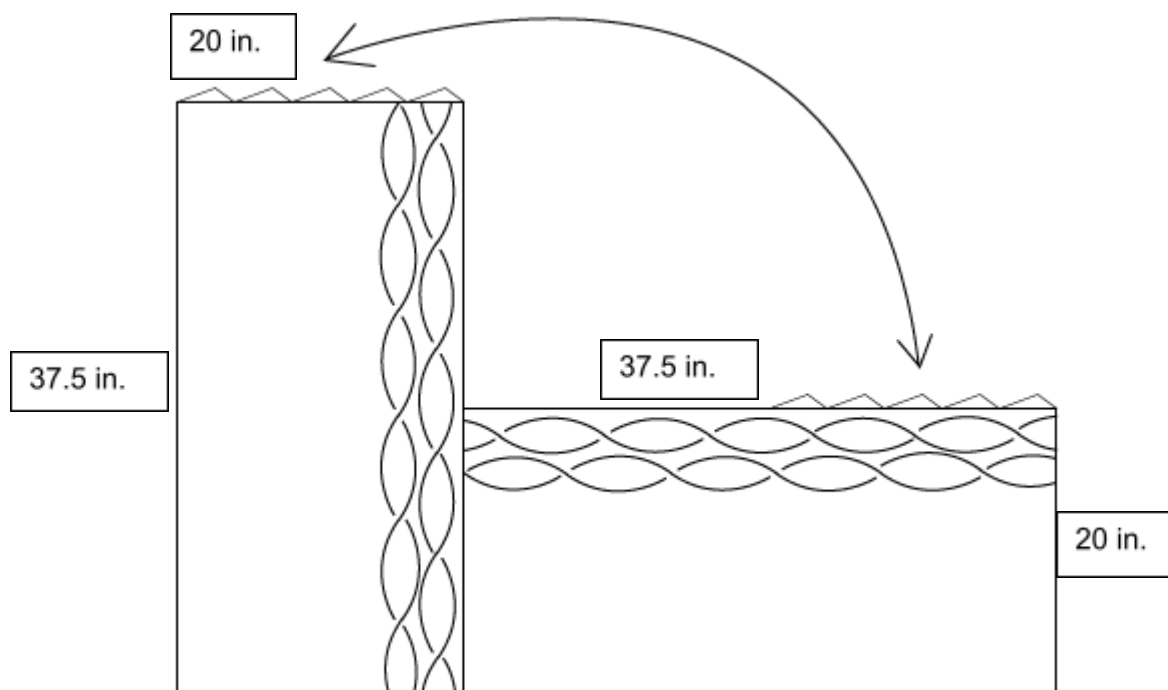
<input type="checkbox"/>	RS: Knit, WS: Purl
<input checked="" type="checkbox"/>	RS: Purl, WS: Knit
<input checked="" type="checkbox"/>	Cable over 12 sts, holding 6sts behind

**Cable over 12 stitches**

Sl 6 sts to cable needle and hold behind work, knit 6 sts from left hand needle, knit 6 sts from cable needle.

### Assembly

Sew the two pieces together with the cable sections closest to the neck as shown below:



### Collar

Pick up approx. 110 sts along the neck edge. Knit in rib pattern \*K1, P1\* for 1 inch. Bind off in pattern and sew in ends.

Enjoy!