



Corner to corner “C2C” blanket

Materials: Crochet Hook US sizes H/8 and J/10 (5 and 6 mm)
Hobbii Amigo Yarn

Measurements: Approx. 67”x51”
(170x130cm)

Usage:

Color 1 – Ecu (#2) – approx. 13 oz/375g
Color 2 – Grey Melange (#9) – approx. 13 oz/375g
Color 3 – Steel Blue (#24) – approx. 13 oz/370g
Border – Ecu (#2) – approx. 3.5 oz/100g

Abbreviations:

Ch: Chain

St: Stitch

Sc: Single Crochet

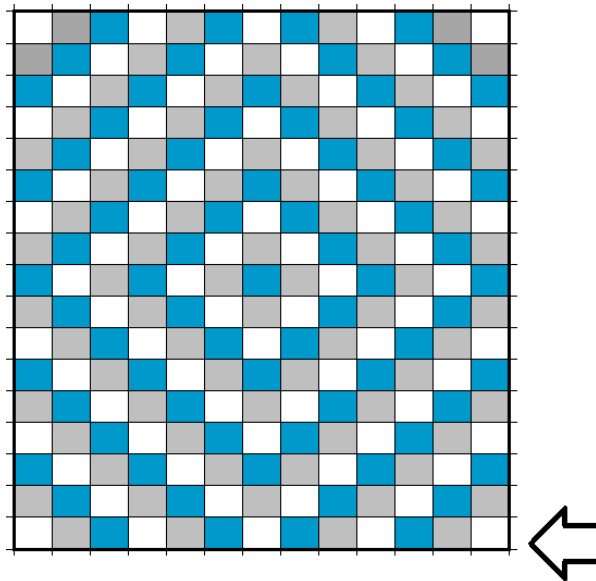
Dc: Double Crochet

Sl st: Slip Stitch

Ch sp: Chain Space

Buy yarn and accessories here:

<https://hobbii.com/c2c-blanket>



Description:

Here you can see the pattern in the blanket. Every square is 1 "C2C"-patch "6x6".

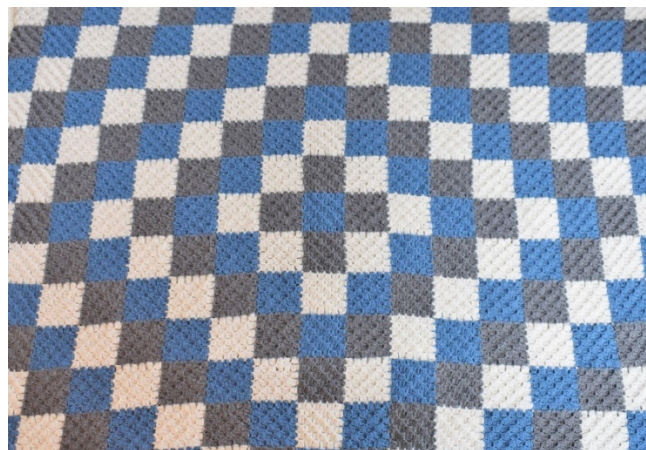
You start to the right and the patches are worked together towards the left. When one row is done, the next is also started to the right and again, you work to the left.

The patches are worked together as they are made, which is called "join as you go".

All patches are worked with hook H/8 (5 mm) and the border is worked with hook J/10 (6 mm).

An illustrated instruction can be found further down the pattern and you can find video tutorials by following these links:

- Part 1 - "C2C" square – 6x6 - <https://youtu.be/AtYX2cqtphA>
- Part 2 – "Join as you go" – Horizontal - <https://youtu.be/uwV2g4U7Sgg>
- Part 3 – "Join as you go" – Vertical - <https://youtu.be/4rTOnn4wENo>
- Part 4 – "Join as you go" – 2-sided vertical - <https://youtu.be/K7o39LijRA0>



Instructions - "C2C" patch 6x6:

Row 1 :



1. Start by casting on 6 ch.



2. Work 1 dc in 4th ch from the hook.



3. Work 1 dc in the last 2 ch. Now you have a little "square" of 4 "dc" (the 1st dc is replaced by ch). The C2C pattern actually just consists of a lot of these "squares".

Row 2:



1. Turn your work and make 6 ch.



2. Work 1 dc in 4th ch from the hook.



3. Work 1 dc in the last 2 ch. Now you have a "square" again.



4. Now you join this "square" with the first by making a sl st in the left side of the first square. The needle here marks where to work your sl st.



5. The 2 "squares" are now joined.



6. Make 3 ch (replaces 1st dc).



7. Work 3 dc in the ch sp where you just made 1 sl st. Now another “square” has been formed and row no. 2 now have 2 “squares”.

Row 3:



1. Turn your work and make 6 ch.



2. Work 1 dc in 4th ch from the hook and thereafter 1 dc in the last 2 ch.



3. Now make 1 sl st in the square below. The needle here marks where to work your sl st.



4. There. They are now joined.



5. Now make 3 ch (replaces 1st dc).



6. Work 3 dc in the ch sp where you just made a sl st, so you now have another "square".



7. Make 1 sl st in the square next to this. The needle here marks where to work your sl st.



8. Make 3 ch (replaces 1st dc).



9. Work 3 dc in the ch sp where you just made 1 sl st. Now another "square" has been formed and row no. 3 now have 3 "squares".

Row 4:



1. Turn your work and make 6 ch.



2. Work 1 dc in 4th ch from the hook and thereafter 1 dc in the last 2 ch.



3. Now make 1 sl st in the square below. The needle here marks where to work your sl st.



4. The squares are now joined.



5. Make 3 ch (replaces 1st dc).



6. Work 3 dc in the ch sp where you just made a sl st, so you now have another "square".



7. Make 1 sl st in the square next to this. The needle here marks where to work your sl st.



8. Make 3 ch (replaces 1st dc).



9. Work 3 dc in the ch sp where you just made a sl st, so you now have another "square".



10. Make 1 sl st in the square next to this. The needle here marks where to work your sl st.



11. Make 3 ch (replaces 1st dc).



12. Work 3 dc in the ch sp where you just made 1 sl st. Now another "square" has been formed and row no. 4 now have 4 "squares".

Row 5:



1. Turn your work and make 6 ch.



2. Work 1 dc in 4th ch from the hook and thereafter 1 dc in the last 2 ch.



3. Now make 1 sl st in the square below. The needle here marks where to work your sl st.



4. The squares are now joined.



5. Make 3 ch (replaces 1st dc).



6. Work 3 dc in the ch sp where you just made a sl st, so you now have another "square".



7. Make 1 sl st in the square next to this. The needle here marks where to work your sl st.



8. Make 3 ch (replaces 1st dc).



9. Work 3 dc in the ch sp where you just made a sl st, so you now have another "square".



10. Make 1 sl st in the square next to this. The needle here marks where to work your sl st.



11. Make 3 ch (replaces 1st dc).



12. Work 3 dc in the ch sp where you just made a sl st, so you now have another "square".



13. Make 1 sl st in the square next to this. The needle here marks where to work your sl st.



14. Make 3 ch (replaces 1st dc).



15. Work 3 dc in the ch sp where you just made 1 sl st. Now another "square" has been formed and row no. 5 now have 5 "squares".

Row 6:



1. Repeat the rows 1 more time as the previous rows.



2. Once row 6 is made, you will have 6 "squares". Each row has grown by 1 "square"

and now the work should no longer grow but get the shape of a square.

Row 7:



1. Here row 6 has just been finished.



2. Turn your work.



3. In stead of making 6 ch like you have up until now, work 3 sl st along the side of the last square.



4. Make 3 ch (replaces 1st dc).



5. Work 3 dc in the ch sp from the previous square so you now have another "square". After that, work a sl st in the next square as earlier.



7. Here the 5th "square" has just been finished and joined with the last square.

6. Now repeat the row as usual until you have 5 "squares".



8. In stead of working 3 ch as usual, turn your work.



9. Work 3 sl st along the side of the square. You have now made a decrease. Now there's 5 "squares" on row 7.

Row 8:



1. Make 3 ch (replaces 1st dc).



2. Repeat the row as usual until you have 4 "squares". Turn your work and finish as shown on row 7.

Row 9:



1. Repeat the row as shown on row 7. You've now got 3 squares left.

Række 10:



1. Repeat the row as shown on row 7. You've now got 2 squares left.

Row 11:



1. Repeat the row as shown on row 7. You've now got 1 square left.

2. Turn your work and work 3 sl st along the last square. Cut the yarn.



Your "C2C"-patch is now done and measures 6x6 "squares".

Instructions – Join as you go:

Row 1:



1. Here the first white patch has just been finished. A stitch marker has been placed in the corner that was the beginning of the square.



2. Now 1 grey patch is to be crocheted onto it. The grey yarn is attached in the opposite corner of the stitch marker (in the last square that was made on the white square).



3. Make 6 ch.



4. Work 1 dc in 4th ch from the hook and 1 dc in the last 2 ch.



5. Now make 1 sl st between the first 2 "squares" on the white patch.



6. Make 3 ch and between the next 2 "squares", work 1 sl st.



7. Like this.



8. Turn the work and make 3 ch (replaces 1st dc).



9. Work 3 dc in the ch sp.



10. Make 1 sl st in the "square" next to this and work 3 ch (replaces 1st dc).



11. Work 3 dc.



12. Turn the work and work 6 ch.



13. Work 1 dc in 4th ch from the hook and 1 dc in the last 2 ch.



14. Make 1 sl st in the "square" next to you and work 3 ch (replaces 1st dc).



15. Work 3 dc and make 1 sl st in the "square" next to this.



16. Make 3 ch (replaces 1st dc).



17. Work 3 dc.



Now make 1 sl st between the next 2 "squares" on the white patch.



18. Like this.



19. Make 3 ch and work 1 sl st between the next 2 "squares".



20. Turn your work and make 3 ch (replaces 1st dc). Continue the rows as shown and finish your patch.



21. A grey patch has now been build on the left side of the white patch.



22. Now a blue patch has to be crocheted onto the left side of the grey. This is done the same way and you start in the top, left corner again as shown in the picture here.



23. This is how you work your patches together until you have joined all 13 patches on row 1.

Row 2 and forth:



1. Now row 2 has to be made. Remember to work from right to left, so the next row starts in the same end your stitch marker is placed.

2. A grey patch has to be made vertically on your white patch. Attach yarn for a grey patch in the right corner of the white. This patch is made the same way as your patches in row 1. Make 6 ch.



3. Work 1 dc in 4th ch from the hook and 1 dc in the last 2 ch.



4. Make 1 sl st between 2 "squares" and work 3 ch.



5. Work 1 sl st between the next 2 "squares".



6. Turn the work and make 3 ch (replaces 1st dc)



7. Work 3 dc in the ch sp and make 1 sl st in the square next to this.



8. Make 3 ch (replaces 1st dc)



9. Work 3 dc.



10. Turn your work and work 6 ch.



11. Continue with your square as usual. When you get to the corner, make a sl st between the grey and the white patch.



12. Like this.



13. Finish your patch as usual.



14. Now 1 blue patch has to be crocheted on the sides of the 2 grey patches. Bring the yarn through the white and the grey patch as in the picture.



15. Make 3 ch.



16. Make 1 sl st between 2 "squares" on the vertical grey patch. Make 3 ch (replaces 1st dc).



17. Work 3 dc in the ch sp.



18. Make 1 sl st between 2 "squares" on the horizontal grey patch. Make 3 ch.



19. Make 1 sl st between the next 2 "squares" on the horizontal grey patch.



20. Turn your work and make 3 ch (replaces 1st dc).



21. Work 3 dc in the ch sp.



22. Make 1 sl st in the square next to this and make 3 ch (replaces 1st dc).



23. Work 3 dc.



24. Make 1 sl st between 2 "squares" on the vertical grey patch.



25. Work 3 ch and make 1 sl st between the next 2 "squares" on the vertical patch.



26. Turn your work and make 3 ch (replaces 1st dc).



27. Repeat the rows. When you get to the corner, you work your sl st between the grey and blue patch.



28. Like this.



29. Continue as usual.



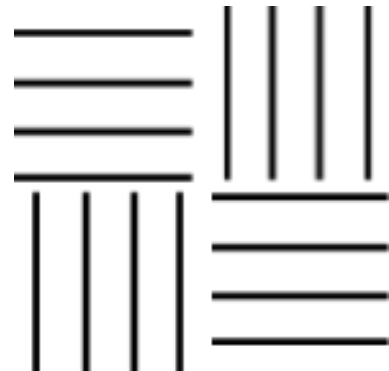
30. Finish your patch. Repeat like this in order to build all your patches together.



31. This is how your assembling of 4 patches will look.



32. It is important that you work the patches correctly as you go, so they turn right compared to each other. Here you can see the assembling of the 4 patches and the corners are all in different directions. If you follow the guide, your patches will turn right 😊



33. An assembling in the middle will look like this.

Instructions - Border:

The border is worked in white on hook J/10 (6 mm).

1st round:



1. Now the border has to be made. Just start a random place on the blanket.



2. Insert the white yarn between 2 "squares" on the blanket.



3. Make 3 ch.



4. Work 1 sl st between the next 2 "squares".



5. Make 3 ch.



6. Make 1 sl st between the next 2 "squares".



7. Repeat like this around. Work like this in the corners:



8. Make 3 ch and 1 sl st in the corner.



9. Make 2 ch.



10. And work 1 sl st in the corner again.



11. Make 3 ch.



12. Work 1 sl st between 2 "squares" on the other side of the corner and continue around.



13. Finish the round with 1 sl st where the round started.

2nd round:



1. Make 1 sl st in the first ch sp and work 3 ch (replaces 1st dc).



2. All sts on this round are worked in the ch sps we made on the previous round.



3. Work 2 dc in the ch sp where you just made 3 ch.



4. Now work in the next ch sp.



5. Work 3 dc..



6. Repeat around with 3 dc in every ch sp. When you get to a corner, work like this:



7. In the ch sp with 2 ch we made on the previous round, now work



8. 3 dc. This makes a nice, round corner.



9. Now continue around with 3 dc in the ch sps and repeat in the next 3 corners.



10. Finish the round with 1 sl st.

3rd round:



1. Make 1 ch.



2. Now work sc in all sts.



3. Work 3 sc in the middle dc in the corner.



4. Continue around with sc and 3 sc in the corners.



5. Finish with 1 sl st.

4th round:



1. Work 1 round sl st. Cut the yarn and weave in the end.



Happy crocheting ☺

Kind regards, Hobbii.com